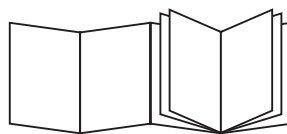

ECAM20.11X - 21.11X - 22.11X

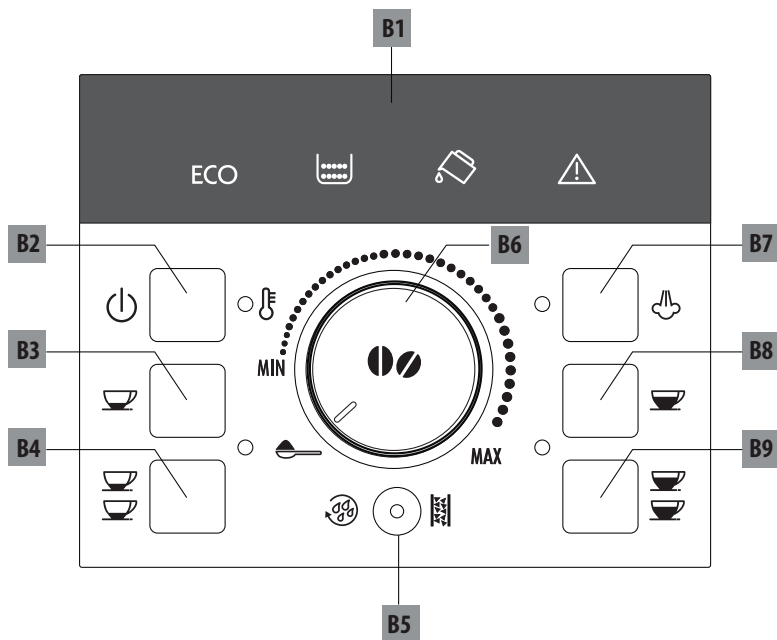
BEAN TO CUP ESPRESSO
AND CAPPUCCINO
MACHINE
Instruction for use



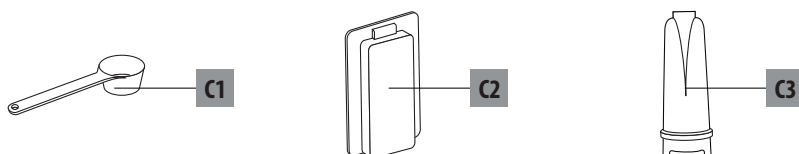
De'Longhi



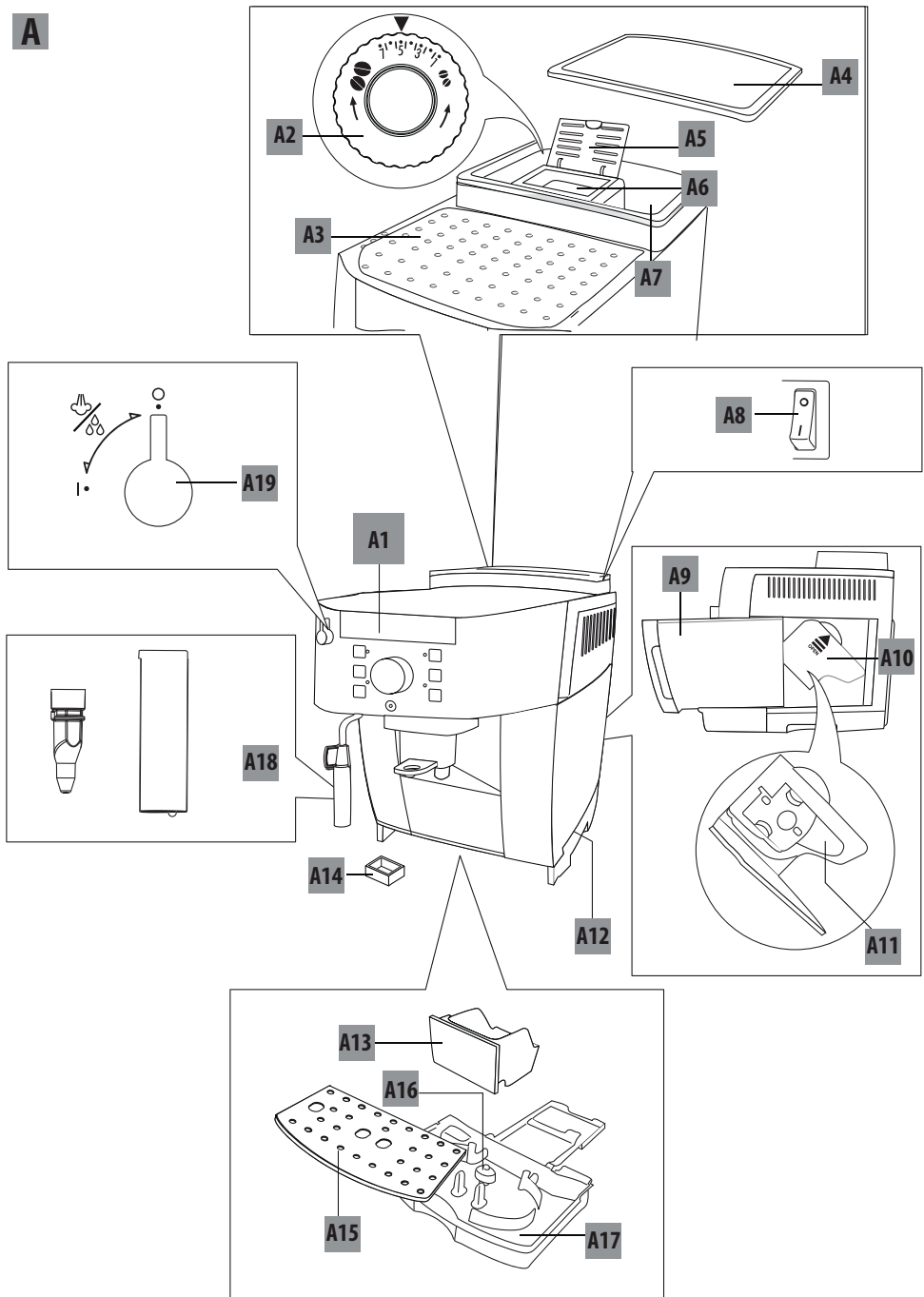
B

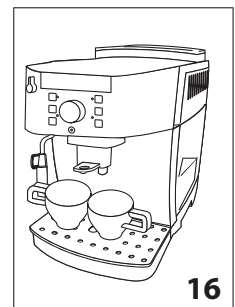
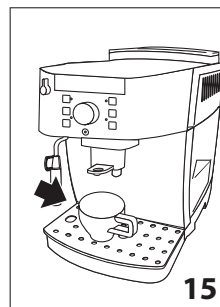
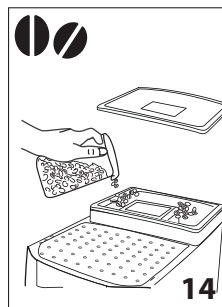
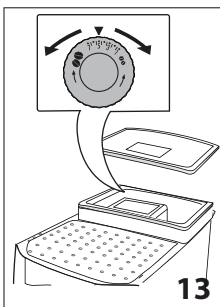
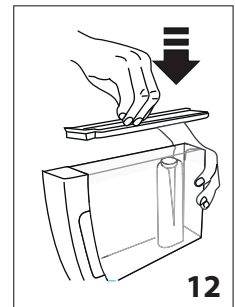
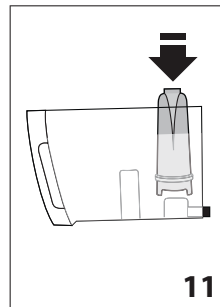
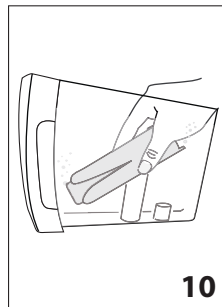
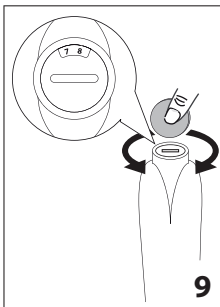
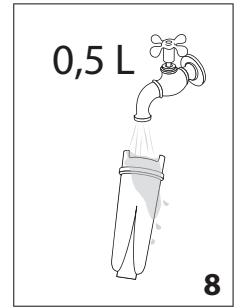
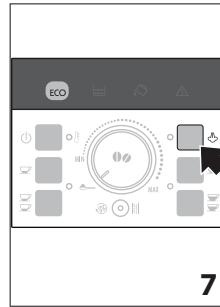
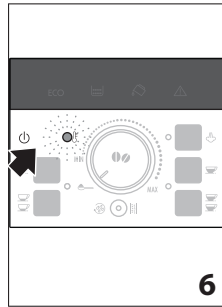
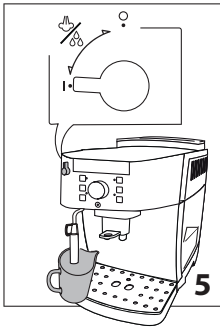
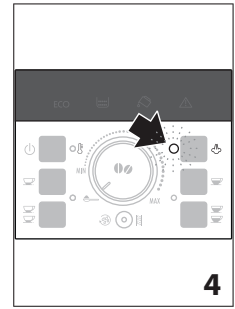
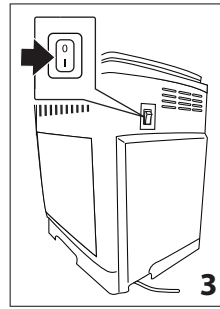
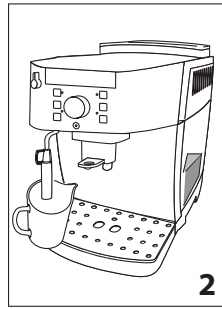
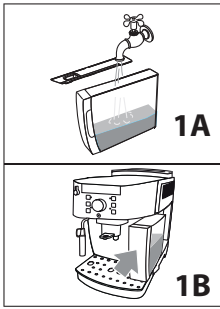


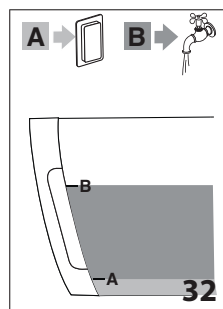
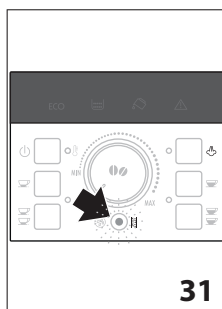
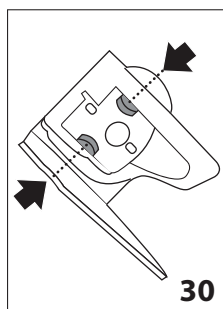
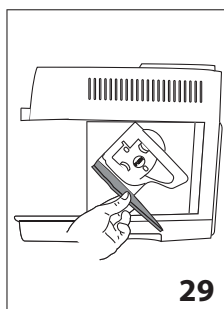
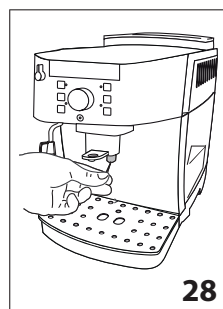
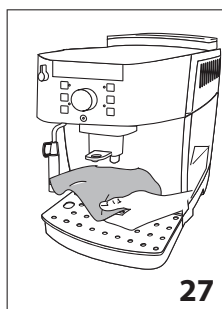
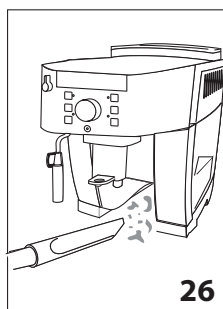
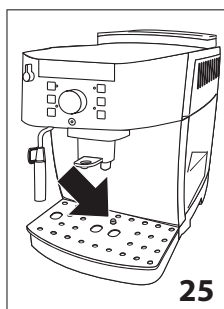
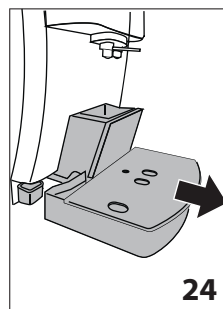
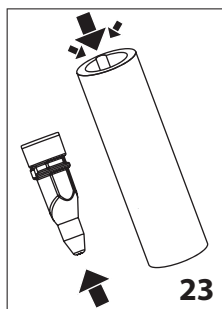
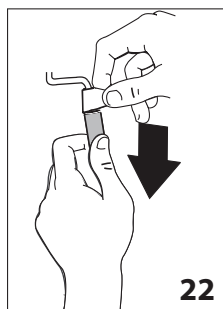
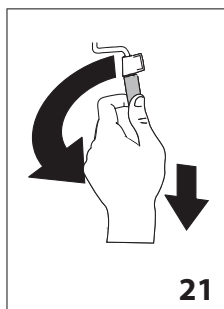
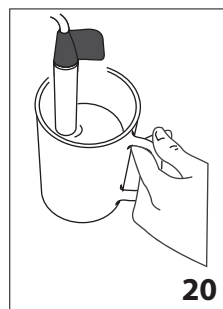
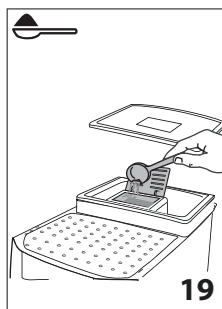
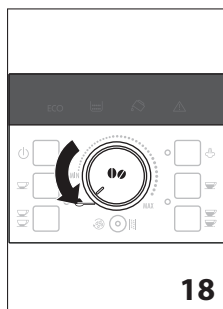
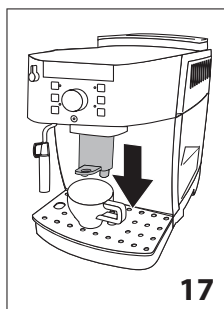
C



A







CONTENTS

INTRODUCTION	7
Symbols used in these instructions	7
Letters in brackets	7
Troubleshooting and repairs	7
SAFETY	7
Fundamental safety warnings.....	7
Designated use	7
Instruction for Use.....	8
DESCRIPTION	8
Description of the appliance	8
Description of the control panel	8
Description of the accessories	8
Description of lights	8
BEFORE USE	9
Checking the appliance	9
Installing the appliance	9
Setting up the appliance	9
Using the appliance for the first time.....	9
TURNING THE APPLIANCE ON	9
TURNING THE APPLIANCE OFF	10
AUTO-OFF.....	10
ENERGY SAVING.....	10
WATER SOFTENER FILTER (SOME MODELS ONLY) ...	10
Installing the filter	10
Removing and replacing the filter.....	11
MAKING COFFEE	11
Selecting the coffee taste.....	11
Selecting the quantity of coffee in the cup	11
Adjusting the coffee mill	11
Setting the temperature	11
Tips for a hotter coffee	11
Making coffee using coffee beans	12
Making coffee using pre-ground coffee	12
MAKING CAPPUCCINO	12
Cleaning the cappuccino maker after use.....	13
HEATING WATER	13
CLEANING	13
Cleaning the drip tray and condensate tray.....	13
Cleaning the inside of the coffee maker	14
Cleaning the water tank.....	14
Cleaning the coffee spouts.....	14
Cleaning the pre-ground coffee funnel	14
Cleaning the infuser	14
DESCALING.....	14
SETTING WATER HARDNESS.....	15
Measuring water hardness.....	15
Set water hardness	15
TECHNICAL DATA.....	15
EXPLANATION OF LIGHTS	16
DISPOSAL.....	16
TROUBLESHOOTING	17
ELECTRICAL CONNECTION (UK ONLY).....	19

INTRODUCTION

Thank you for choosing this automatic espresso and cappuccino machine.

We hope you enjoy using your new appliance.

Take a few minutes to read this Instruction for Use.

This will avoid all risks and damage to the appliance.

Symbols used in these instructions

Important warnings are identified by these symbols. It is vital to respect these warnings.



Failure to observe the warning may result in life threatening injury by electric shock.



Failure to observe the warning could result in injury or damage to the appliance.



Failure to observe the warning could result in burns or scalding.



This symbol identifies important advice or information for the user.

Letters in brackets

The letters in brackets refer to the legend in the Description of the Appliance on pages 2 and 3.

Troubleshooting and repairs

In the event of problems, first try and resolve them following the information given in the sections "Explanation of lights" on page 16 and "Troubleshooting" on page 17.

If this does not resolve the problem or you require further information, you should consult Customer Services by calling the number given on the annexed "Customer Service" sheet.

If your country is not among those listed on the sheet, call the number given in the guarantee. If repairs are required, contact De'Longhi Customer Services only. The addresses are given in the guarantee certificate provided with the machine.

SAFETY

Fundamental safety warnings



This is an electrical appliance and may cause electric shock.

You should therefore follow these safety warnings:

- Never touch the appliance with damp hands or feet.
- Never touch the plug with damp hands.
- Make sure the socket used is freely accessible at all times, enabling the appliance to be unplugged when necessary.

- Unplug directly from the plug only. Never pull the power cable as you could damage it.
- To disconnect the appliance completely, unplug it from the mains socket.
- If the appliance is faulty, do not attempt to repair. Turn it off, unplug from the mains socket and contact Customer Services.

If the plug or power cable is damaged, it must be replaced by De'Longhi Customer Services only to avoid all risk.

Never immerse the appliance in water when cleaning. It is an electrical appliance.

- Before cleaning the outside of the appliance, turn it off, unplug from the mains socket and allow to cool.



Important:

Keep all packaging (plastic bags, polystyrene foam) away from children.

This appliance can be used by children aged from 8 years and above and persons with reduced physical, sensory or mental capabilities or lack of experience and knowledge if they

have been given supervision or instruction concerning use of the appliance in a safe way and understand the hazards involved.

Children shall not play with the appliance.

Cleaning and user maintenance shall not be made by children without supervision.



Danger of burns!

This appliance produces hot water and steam may form while it is in operation.

Avoid contact with splashes of water or hot steam.

When the appliance is in operation, do not touch the cup shelf, as it is hot.



Surfaces marked with this symbol become hot during use (the symbol is present on certain models only).

Designated use

This appliance is designed and made to prepare coffee and heat drinks.

This is a household appliance only.

It is not intended to be used in:

- staff kitchen areas in shops, offices and other working environments;
- farm houses;
- by clients in hotels, motels and other residential type environments;
- bed and breakfast type environments.

Any other use is considered improper and thus dangerous.

The manufacturer is not liable for damage deriving from improper use of the appliance.

Instruction for Use

Read these instructions carefully before using the appliance. Failure to respect these instructions may result in burns or damage to the appliance.

The manufacturer is not liable for damage deriving from failure to respect this Instruction for Use.



Please note:

Keep this Instruction for Use.

If the appliance is passed to other persons, they must also be provided with this Instruction for Use.

DESCRIPTION

Description of the appliance

(page 3 - A)

- A1. Control panel
- A2. Grinding adjustment dial
- A3. Cup shelf
- A4. Beans container lid
- A5. Pre-ground coffee funnel lid
- A6. Pre-ground coffee funnel
- A7. Beans container
- A8. Main switch
- A9. Water tank
- A10. Infuser door
- A11. Infuser
- A12. Coffee spout (adjustable height)
- A13. Coffee grounds container
- A14. Condensate tray
- A15. Cup tray
- A16. Drip tray water level indicator
- A17. Drip tray
- A18. Cappuccino maker
- A19. Steam/hot water dial

Description of the control panel

(page 2 - B)

- B1. Lights
- B2. button: turns the appliance on and off.
- B3. button: to make 1 cup of espresso coffee
- B4. button: to make 2 cups of espresso coffee
- B5. button: to rinse or descale the appliance
- B6. Selection dial: turn to select the required quantity of coffee or use pre-ground coffee
- B7. button: to deliver steam to make hot drinks with milk.
- B8. button: to make 1 cup of espresso coffee
- B9. button: to make 2 cups of espresso coffee

Description of the accessories

(pag. 2 - C)

- C1. Measure
- C2. Descaler bottle
- C3. Water softener filter (some models only)

Description of lights



Light flashing: the machine is heating up or a rinse cycle is underway.



The appliance is delivering one or two cups of espresso coffee.



The appliance is delivering one or two cups of long coffee.



Light on steadily: the "steam" function has been selected;
Light flashing: you must turn the steam dial.



An alarm is displayed on the control panel (see the section: "Explanation of lights" on page 16).



Light on steadily: the grounds container is missing and must be inserted in the appliance;
Light flashing: the grounds container is full and must be emptied.



Light on steadily: the water tank is missing;
Light flashing: there is not enough water in the tank.



Light flashing: the appliance must be descaled (see the section "Descaling").

Light on steadily: the appliance is performing a descaling cycle.

ECO

ECO "Energy Saving" mode is active.

BEFORE USE

Checking the appliance

After removing the packaging, make sure the product is complete and undamaged and that all accessories are present. Do not use the appliance if it is visibly damaged. Contact De'Longhi Customer Services.

Installing the appliance



Important!

When you install the appliance, you should respect the following safety warnings:

- The appliance gives off heat. After positioning the appliance on the worktop, leave a space of at least 3 cm between the surfaces of the appliance and the side and rear walls and at least 15 cm above the coffee machine.
- Water penetrating the appliance could cause damage. Do not place the appliance near taps or sinks.
- The appliance could be damaged if the water it contains freezes. Do not install the appliance in a room where the temperature could drop below freezing point.
- Arrange the power cable in such a way that it cannot be damaged by sharp edges or contact with hot surfaces (e.g. electric hot plates).

Setting up the appliance



Important!

Check that the mains power supply voltage corresponds to the value indicated on the rating plate on the bottom of the appliance.

Connect the appliance to an efficiently earthed and correctly installed socket with a minimum current rating of 10A only.

If the power socket does not match the plug on the appliance, have the socket replaced with a suitable type by a qualified professional.

Using the appliance for the first time




Please note!

- Coffee has been used to factory test the appliance and it is therefore completely normal for there to be traces of coffee in the mill. The machine is, however, guaranteed to be new.

- You should customise water hardness as soon as possible following the Instruction for use in the section "Setting water hardness (page 15).

Follow the instructions:

1. Remove the water tank, fill to the MAX line with fresh water (fig. 1A) then put back in the appliance (fig. 1B).
2. Place a container with a minimum capacity of 100 ml under the cappuccino maker (fig. 2).
3. Plug the appliance into the mains socket and place the main switch on the back of the appliance in the **I** position (fig. 3).
4. The  light flashes on the control panel (fig. 4).
5. Turn the steam dial to the "I" position (fig. 5). The appliance delivers water from the cappuccino maker then goes off.
6. Turn the steam dial to the "0" position.

The coffee maker is now ready for normal use.



Please note!

- When using the appliance for the first time, you need to make 4-5 cups of coffee or 4-5 cappuccinos before it starts to give satisfactory results.
- To enjoy your coffee even more and improve the performance of your appliance, we recommend installing a water softener filter as described in the section "WATER SOFTENER FILTER" (page 10). If your model is not provided with a filter, you can request one from De'Longhi Customer Services.

TURNING THE APPLIANCE ON



Please note!

Before turning the appliance on, make sure the main switch is pressed (fig. 2).

Each time the appliance is turned on, it performs an automatic preheat and rinse cycle which cannot be interrupted.



The appliance is ready for use only after completion of this cycle.




Danger of burns!

During rinsing, a little hot water comes out of the coffee spouts and is collected in the drip tray underneath.

Avoid contact with splashes of water.

- To turn the appliance on, press the  (fig. 6): The corresponding  light flashes while the appliance is heating up and performing an automatic rinse cycle (by circulating hot water, the appliance heats both the boiler and the internal circuits).

The appliance is at temperature when the  light goes off and the lights corresponding to the coffee buttons come on.


TURNING THE APPLIANCE OFF

Whenever the coffee machine is turned off after being used to make coffee, it performs an automatic rinse cycle.



Danger of burns!

During rinsing, a little hot water flows from the coffee spouts. Avoid contact with splashes of water.

To turn the appliance off, press the  button (fig. 6). If featured, the appliance completes a rinse cycle and then goes off (standby).




Please note!

If the appliance is not used for an extended period, also place the main switch in the 0 position (fig. 3).
















Important!

To avoid damaging the appliance, do not place the main switch (fig. 3) in the 0 position until the appliance has been turned off using the  button.

AUTO-OFF

The auto-off time can be changed so that the appliance switches off after 15 or 30 minutes, or after 1, 2 or 3 hours.

To set the auto-off, proceed as follows:



1. With the machine off and the main switch in I position (fig. 3), press the  button and keep it pressed until the lights on the control panel come on.
2. Press the  button (on the left side of the dial) until the lights corresponding to the number of hours before the appliance goes off automatically come on:
15 minutes **ECO**
30 minutes **ECO** 
1 hour **ECO**  
2 hours **ECO**   
3 hours **ECO**    
3. Press the  button (on the left side of the dial) to confirm; the lights switch off.



ENERGY SAVING

Use this function to enable or disable energy saving mode.

When enabled, the function reduces energy consumption in compliance with European regulations.

Energy saving mode is active when the green ECO light is on (fig. 7).

1. With the appliance off and the main switch in the I position (fig. 3), press the  button and hold it down until the **ECO** light comes on (fig. 7).
2. To disable the mode, press the  button (on the left of the dial). The **ECO** light flashes.

3. To re-enable the mode, press the **ECO** button (on the left of the dial)  again. The **ECO** light comes on steadily.
4. Press the  button (on the right of the dial) to confirm the selection. The **ECO** light goes off.



Please note:

A few seconds may elapse between energy saving mode and delivery of the first coffee as the appliance must heat up again.

WATER SOFTENER FILTER (SOME MODELS ONLY)

Certain models are fitted with a water softener filter. If this is not the case with your model, you are recommended to purchase one from De'Longhi Customer Services.



Important:

- Keep in a cool dry place out of direct sunlight.
- After opening the pac., use the filter at once.
- Remove the filter before descaling the machine.

To use the filter correctly, follow the instructions below.

Installing the filter

1. Remove the filter from packaging and rinse the filter with about half a litre of tap water (fig. 8).
2. Rotate the calendar disk so that the next two months are displayed (fig. 9).






Please note:

The filter lasts about two months if the appliance is used normally. If the coffee maker is left unused with the filter installed, it will last a maximum of three weeks.

3. Remove the tank from the appliance and fill with water (fig. 1A).
4. Insert the filter in the water tank and immerse it completely, sloping it to enable the air bubbles to escape (fig. 10).
5. Insert the filter in the filter housing and press as far as it will go (fig. 11).
6. Close the tank with the lid (fig. 12), then replace the tank in the machine.
7. Place a container (min. capacity: 100 ml) under the cappuccino maker.
8. Turn the steam dial in position I to deliver hot water.
9. Let the appliance to deliver hot water for a few seconds, till the delivery flows regularly, then turn the dial in position 0.



Please note:

It may happen that a single hot water is not sufficient to install the filter: the lights    come on.

In this case, repeat the installing operation from step 8.

The new filter is active and you can now use the coffee maker.

Removing and replacing the filter

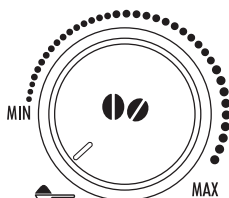
After two months (see date indicator) or when the appliance has not been used for 3 weeks, you should remove the filter and replace with a new one, proceeding as described at the previous paragraph.

MAKING COFFEE

Selecting the coffee taste

Turn the coffee taste selection dial (B6) to set the required taste. Turning it clockwise increases the quantity of coffee beans the appliance will grind and therefore the strength of the coffee obtained.

Turn the dial to MIN for an extra mild coffee and to MAX for an extra strong coffee.



Please note :

- The first time you use the appliance, you will need to make a number of coffees to identify the correct dial position through trial and error.
- Do not turn the dial too far towards MAX, otherwise the coffee may be delivered too slowly (a drop at a time), particularly when making two cups of coffee at the same time.

Selecting the quantity of coffee in the cup

The appliance is set by default to automatically make the following quantities of coffee:

- espresso coffee, when the ☕ button is pressed (≈40ml);
- long coffee when the ☕ button (≈120ml) is pressed;
- two espresso coffees, when the ☕ button is pressed;
- two long coffees, when the ☕ button is pressed.

To change the quantity of coffee the appliance delivers automatically into the cup, proceed as described below:

- press the button corresponding to the quantity to be modified and hold it down until the light flashes and the appliance starts delivering coffee. Release the button;
- when the coffee in the cup reaches the required level, press the same button again to memorise the new amount.

The quantity of coffee in the cup has now been programmed.

Adjusting the coffee mill

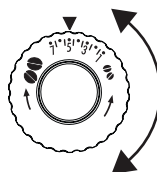
The coffee mill is set by default to prepare coffee correctly and should not require regulating initially.

However, if after making the first few coffees you find that the coffee is either too weak and not creamy enough or delivery is too slow (a drop at a time), this can be corrected by adjusting the grinding adjustment dial (fig. 13).



Please note!

The grinding adjustment dial must only be turned when the coffee mill is in operation.



If the coffee is delivered too slowly or not at all, turn one click clockwise towards "7".

For fuller bodied creamier coffee, turn one click anticlockwise towards "1" (do not turn more than one click at a time otherwise the coffee could

be delivered a drop at a time). These adjustments will only be evident after at least 2 cups of coffee have been delivered. If this adjustment does not obtain the desired result, turn the dial another click.

Setting the temperature

To modify the temperature of the water used to make the coffee, proceed as follows:

1. With the appliance off and the main switch in the I position (fig. 3), press the ☕ button and hold it down until the lights on the control panel come on.
2. Press the ☕ button to select the required temperature:



3. Press the ☕ button to confirm the selection. The lights go off.

Tips for a hotter coffee

For a hotter coffee, before delivery you are recommended to:

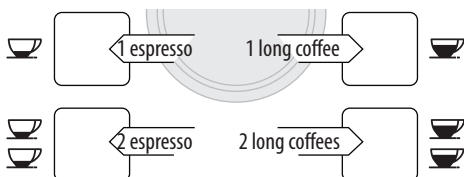
- rinse the appliance through by pressing the ☕ button. Hot water flows out of the coffee spouts and heats the internal circuit of the machine so that the coffee delivered will be hotter.
- warm the cups with hot water (using the hot water function);
- set a hotter coffee temperature (see section "Setting the temperature").

Making coffee using coffee beans



Do not use caramelised or candied coffee beans as they could stick to the coffee mill and make it unusable.

1. Fill the container with coffee beans (fig. 9).
2. Place under the coffee spouts:
 - 1 cup if you want one coffee (fig. 10);
 - 2 cups if you want 2 coffees (fig. 11).
3. Lower the spouts as near as possible to the cup. This makes a creamier coffee (fig. 12).
4. Press the button corresponding to the number of coffees required



5. Preparation begins and the light corresponding to the selected button flashes on the control panel.

Once the coffee has been made, the appliance is ready for use again.



- While the coffee maker is making coffee, delivery can be interrupted at any moment by pressing one of the coffee buttons.
- At the end of delivery, to increase the quantity of coffee in the cup, just press (within 3 seconds) one of the coffee buttons.



For hotter coffee, see the section “**Tips for a hotter coffee**”.



- If the coffee is delivered a drop at a time, too thin and not creamy enough or too cold, read the tips in the “Troubleshooting” section on page 17.
- Lights may be displayed on the control panel during use. Their meaning is given in the section “Explanation of the lights” on page 16.

Making coffee using pre-ground coffee



- Never add pre-ground coffee when the machine is off or it could spread through the inside of the machine and dirty it. This could damage the appliance.
- Never use more than one level measure or it could dirty the inside of the machine or block the funnel.



If you use pre-ground coffee, you can only make one cup of coffee at a time.

1. Make sure the appliance is on.
2. Turn the coffee taste selection dial anticlockwise as far as it will go to the ☞ position (fig. 18).
3. Make sure the funnel is not blocked, then add one level measure of pre-ground coffee (fig. 19).
4. Place a cup under the coffee spouts.
5. Press the 1 cup coffee button (☞ or ☞).
6. Preparation begins.

MAKING CAPPUCCINO



During preparation, steam is given off. Take care to avoid scalds.

1. When making cappuccino, prepare the coffee in a large cup;
2. Fill a container (preferably with a handle to avoid burns) with about 100 ml of milk for each cappuccino to be made. In choosing the size of the container, bear in mind that the milk doubles or triples in volume.



For a richer denser froth, use skimmed or partially skimmed milk at refrigerator temperature (about 5°C).

To avoid milk with poor froth or large bubbles, always clean the cappuccino maker as described in the section “Cleaning the cappuccino maker after use”.

3. Press the ☞ button. The ☞ light flashes.
4. Immerse the cappuccino maker in the milk container (fig. 20).
5. After a few seconds, when the ☞ light flashes, turn the steam dial to the I position (fig. 5). Steam is delivered from the cappuccino maker, giving the milk a creamy frothy appearance and making it more voluminous.

- To obtain a creamier froth, rotate the container with slow upward movements. You should not deliver steam for more than 3 minutes at a time.
- When you have obtained the required froth, stop steam delivery by turning the steam dial back to the 0 position.



Danger of burns!

Stop steam delivery before removing the container with the frothed milk to avoid burns caused by splashes of boiling milk.

- Add the milk froth to the coffee prepared previously. The cappuccino is ready. Sweeten to taste and, if desired, sprinkle the froth with a little cocoa powder.

Cleaning the cappuccino maker after use

Clean the cappuccino maker after use to avoid the build-up of milk residues or blockages.

- Place a container under the cappuccino maker and deliver a little water for a few seconds by rotating the steam dial to the I position (fig. 5). Then turn the steam dial to the 0 position to stop the flow of hot water.
- Wait a few minutes for the cappuccino maker to cool down. Grip the handle of the cappuccino maker tube firmly in one hand and with the other rotate the cappuccino maker anti-clockwise (fig. 16), then remove by pulling downwards.
- Also remove the steam nozzle by pulling it downwards (fig. 17).
- Make sure the two holes shown by the arrow in fig. 18 are not blocked. If necessary, clean with a toothpick.
- Wash all parts of the cappuccino maker thoroughly with a sponge and warm water.
- Replace the nozzle and put the cappuccino maker back on the nozzle, pushing it and turning it upwards until it is attached.

HEATING WATER



Danger of burns!

Never leave the machine unsupervised while delivering hot water. Stop delivery of hot water as described below when the cup is full. The hot water spout becomes hot while water is being delivered and must be handled by the handle only.

- Possible to avoid splashes.
- Turn the steam dial to the I position. Delivery begins.
- Stop by turning the steam dial to the 0 position.



Please note :

If "Energy Saving" mode is active, you may have to wait a few seconds before the hot water is delivered.


CLEANING



Important!

- Do not use solvents, abrasive detergents or alcohol to clean the appliance. With De'Longhi superautomatic coffee machines, you need not use chemical products to clean the machine.
- Do not use metal objects to remove encrustations or coffee deposits as they could scratch metal or plastic surfaces.

Cleaning the coffee grounds container

When the  light flashes, the coffee grounds container must be emptied and cleaned.

Unless you clean the grounds container, the light will continue to flash and the appliance cannot be used to make coffee.

To clean (with the machine on):

- Remove the drip tray (fig. 24), empty and clean.
- Empty the grounds container and clean thoroughly to remove all residues left on the bottom.
- Also check the condensate tray (red) and empty if necessary.



Important!

When removing the drip tray, the grounds container must be emptied, even if it contains few grounds.

If this is not done, when you make the next coffees, the grounds container may fill up more than expected and clog the machine.

Cleaning the drip tray and condensate tray



Important!

If the drip tray is not emptied regularly, the water could overflow from the edge and seep inside or around the coffee maker. This could damage the machine, the surface it rests on or the surrounding area.

The drip tray is fitted with a level indicator (red) showing the level of water it contains (fig. 25).

Before the indicator protrudes from the cup tray, the drip tray must be emptied and cleaned.

To remove the drip tray:

- Remove the drip tray and the grounds container (fig. 24);
- Empty the drip tray and grounds container and wash them;
- Check the condensate tray and empty if necessary.
- Replace the drip tray and grounds container.

Cleaning the inside of the coffee maker



Danger of electric shock!

Before cleaning internal parts, the machine must be turned off (see "Turning off") and unplugged from the mains power supply. Never immerse the coffee maker in water.

1. Check regularly (about once a month) that the inside of the appliance (accessible after removing the drip tray) is not dirty. If necessary, remove coffee deposits with a sponge.
2. Remove the residues with a vacuum cleaner (fig. 26).

Cleaning the water tank

1. Clean the water tank (A9) regularly (about once a month and whenever you replace the water softener filter (if present) with a damp cloth and a little mild washing up liquid.
2. Remove the filter (if present) and rinse with running water.
3. Replace the filter (if present), fill the tank with fresh water and replace the tank.

Cleaning the coffee spouts

1. Clean the coffee spouts regularly with a sponge or cloth (fig. 27).
2. Check the holes in the coffee spout are not blocked. If necessary, remove coffee deposits with a toothpick (fig. 28).

Cleaning the pre-ground coffee funnel

Check regularly (about once a month) that the pre-ground coffee funnel is not blocked. If necessary, remove coffee deposits.

Cleaning the infuser

The infuser (A11) must be cleaned at least once a month.



Important!

The infuser may not be extracted when the machine is on.

1. Make sure the machine is correctly turned off (see "Turning the appliance off" on page 9).
2. Remove the water tank.
3. Open the infuser door (fig. 29) on the right side.
4. Press the two red release buttons inwards and at the same time pull the infuser outwards (fig. 30).

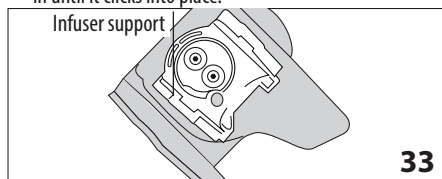


Important!

Clean the infuser without using washing up liquid as it could be damaged.

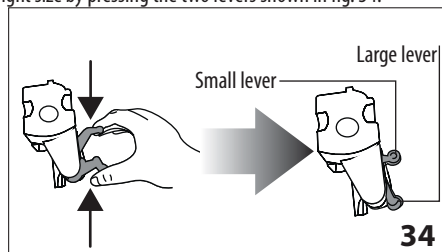
5. Soak the infuser in water for about 5 minutes, then rinse under the tap.
6. Clean coffee residues from the support where the infuser rests.

7. After cleaning, replace the infuser by sliding it onto the internal support (fig. 33), then push the PUSH symbol fully in until it clicks into place.

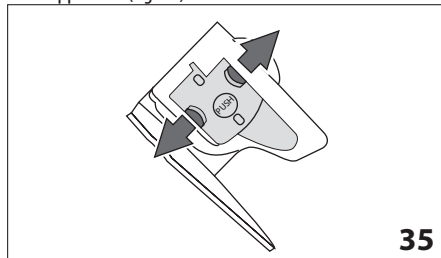


Please note!

If the infuser is difficult to insert, before insertion, adapt it to the right size by pressing the two levers shown in fig. 34.




8. Once inserted, make sure the two red buttons have snapped out (fig. 35).



9. Close the infuser door.
10. Replace the water tank.

DESCALING

Descalc the appliance when the  light on the control panel flashes (fig. 31).



Important!

- Descaler contains acids which may irritate the skin and eyes. It is vital to respect the manufacturer's safety warnings given on the descaler pack and the warnings relating to the procedure to follow in the event of contact with the skin and eyes.
- You should use De'Longhi descaler only. Using unsuitable descaler and/or performing descaling incorrectly may result in faults not covered by the manufacturer's guarantee.

1. Turn the appliance on and wait until it is ready for use.

2. Empty the water tank (A12) and remove the softener filter, if present.
3. Pour the descaler into the tank up to the level **A** (corresponding to a 100 ml pack) marked on the back of the tank (fig. 32A), then add water (1l) up to level **B** (fig. 32B). Place an empty container with a minimum capacity of 1.5 litres under the cappuccino maker.
4. Wait for the coffee lights to come on steadily.



Important! Danger of burns

Hot water containing acid flows from the cappuccino maker. Avoid contact with splashes of water.

5. Press the button and hold it down for at least 5 seconds to confirm that you have added the solution and begin the descaling procedure. The light in the button remains on steadily to indicate that the descaling programme has begun. The light flashes telling you to turn the steam dial to the I position.
6. Turn the steam dial a half turn anticlockwise to the I position. The descaler solution flows out of the cappuccino maker into the underlying container.

The descale programme automatically performs a series of rinses and pauses to remove the limescale.

It is normal for several minutes of inactivity to elapse between rinses.

After about 30 minutes, the water tank is empty and the and lights flash. Turn the steam dial clockwise as far as it will go to the 0 position.

The appliance is now ready for rinsing through with clean water.

7. Empty the container used to collect the descaler solution and replace it empty under the cappuccino maker.
8. Remove the water tank, empty, rinse under running water, fill with clean water and replace. The light flashes.
9. Turn the steam dial anticlockwise to the I position (fig. 5). Hot water comes out of the spout.
10. When the water tank is completely empty, the light flashes.
11. Turn the dial to the 0 position. The light goes off. Fill the water tank again and the machine is ready for use.

SETTING WATER HARDNESS

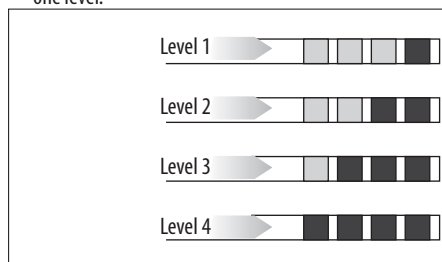
Descaling is necessary after a period of operation established according to the water hardness set.

The machine is factory set for a hardness value of 4.

The machine can also be programmed according to the hardness of the mains water in the various regions so that the machine needs to be descaled less often.

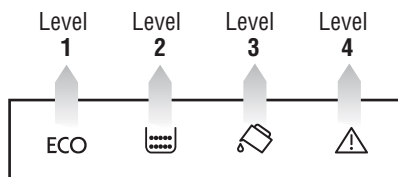
Measuring water hardness

1. Remove the "TOTAL HARDNESS TEST" indicator paper from its pack (attached to the English instructions).
2. Immerse the paper completely in a glass of water for one second.
3. Remove the paper from the water and shake lightly. After about a minute, 1, 2, 3, or 4 red squares form, depending on the hardness of the water. Each square corresponds to one level.



Set water hardness

1. Make sure the appliance is off (but connected to the mains electricity supply and with the main switch in the I position);
2. Press the button and hold it down for at least 6 seconds. The and lights come on together;
3. Press the button (on the left of the dial) to set the actual water hardness as measured by the indicator paper.



4. Press the button (on the right of the dial) to confirm the selection.

The machine is now reprogrammed with the new water hardness setting.

TECHNICAL DATA

Voltage:	220-240 V ~ 50/60 Hz max. 10A
Absorbed power:	1450W
Pressure:	15 bars
Water tank capacity:	1.8 litres max.
Size LxHxD:	238x340x430 mm
Cable length:	1.15 m
Weight:	9.1 kg
Coffee beans container capacity:	250 g max.

CE The appliance complies with the following EC directives:

- Low Voltage Directive 2006/95/EC and subsequent amendments;
- EMC Directive 2004/108/EC and subsequent amendments;
- European Stand-by Regulation 1275/2008;
- Materials and accessories coming into contact with food conform to EC regulation 1935/2004.

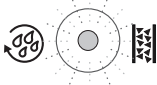





DISPOSAL



In compliance with European directive 2002/96/EC, the appliance must not be disposed of with household waste, but taken to an authorised waste separation and recycling centre.


EXPLANATION OF LIGHTS

LIGHT	POSSIBLE CAUSE	REMEDY
<p>FLASHING</p>	Insufficient water in the tank.	Fill the tank with water and insert it correctly, pushing it as far as it will go until it clicks into place.
<p>FLASHING</p>	The tank is not correctly in place.	Insert the tank correctly and press as far as it will go.
<p>FLASHING</p>	The grounds container (A13) is full.	Empty the grounds container and drip tray, clean and replace. Important: when removing the drip tray, the grounds container MUST be emptied, even if it contains few grounds. If this is not done, when you make the next coffees, the grounds container may fill up more than expected and clog the machine.
<p>FLASHING</p>	After cleaning, the grounds container has not been replaced.	Remove the drip tray and insert the grounds container.
<p>FLASHING</p>	The grinding is too fine and the coffee is delivered too slowly or not at all.	Repeat coffee delivery and turn the grinding adjustment dial (fig. 11) one click clockwise towards "7" while the coffee mill is in operation. If after making at least 2 coffees delivery is still too slow, repeat the correction procedure, turning the grinding adjustment dial another click until delivery is correct (see the section: Adjusting the coffee mill on page 11). If the problem persists, turn the steam dial to the I position and deliver water from the cappuccino maker.
<p>FLASHING</p>	The "pre-ground coffee" function has been selected without placing any pre-ground coffee in the funnel.	Place pre-ground coffee in the funnel or deselect the "pre-ground" function.

 <p>FLASHING</p>	The machine must be descaled.	The descaling procedure described in the section “Descaling” needs to be performed as soon as possible.
 <p>FLASHING</p>	Too much coffee has been used.	Select a milder taste or reduce the quantity of pre-ground coffee then make the coffee again.
 <p>FLASHING</p>	The coffee beans have run out.	Fill the beans container
 <p>FLASHING</p>	The pre-ground coffee funnel is clogged.	Empty the funnel with the help of a knife as described in the section “Cleaning the pre-ground coffee funnel”.
 <p>FLASHING</p>	The infuser has not been replaced after cleaning.	Insert the infuser as described in the section “Cleaning the infuser”.
 <p>FLASHING</p>	The inside of the appliance is very dirty.	Clean the inside of the appliance thoroughly, as described in the section “Cleaning and maintenance”. If the message is still displayed after cleaning, contact a customer services.

TROUBLESHOOTING

Below is a list of some of the possible malfunctions.

PROBLEM	POSSIBLE CAUSE	REMEDY
The coffee is not hot	The cups were not preheated.	Warm the cups by rinsing them with hot water (Please note you can use the hot water or rinse function).
	The infuser has cooled down because 2/3 minutes have elapsed since the last coffee was made.	Before making the coffee, warm the infuser by pressing the rinse button  .
The coffee is thin or not creamy enough.	The coffee is ground too coarsely.	Turn the grinding adjustment dial one click anticlockwise while the coffee mill is in operation (fig. 8). Continue one click at a time until coffee delivery is satisfactory. The effect is only visible after delivering two coffees (see the section: “Adjusting the coffee mill” on page 11).
	The coffee is unsuitable.	Use pre-ground coffee for espresso coffee makers.

The coffee is delivered too slowly or a drop at a time	The coffee is ground too finely.	Turn the grinding adjustment dial one click clockwise while the coffee mill is in operation (fig. 10). Continue one click at a time until coffee delivery is satisfactory. The effect is only visible after delivering 2 coffees (see the section: "Adjusting the coffee mill" on page 11).
Coffee does not come out of one of the spouts	The spouts are blocked.	Clean the spouts with a toothpick.
The frothed milk has large bubbles	The milk is not cold enough or is not semi-skimmed.	You should ideally use skimmed or semi-skimmed milk at refrigerator temperature (about 5°C). If the result is still disappointing, try another brand of milk.
The milk is not frothed	Cappuccino maker dirty.	Clean as described in the section "Cleaning the cappuccino maker after use" on page 13.
Steam delivery stops during use	A safety device stops steam delivery after 3 minutes.	Wait a few minutes, then activate the steam function again.
The appliance does not come on	It is not plugged into the mains socket.	Plug into the mains socket.
	The main switch (A8) is not turned on.	Place the main switch in the I position (fig. 1).

ELECTRICAL CONNECTION (UK ONLY)

Before using this appliance ensure that the voltage indicated on the product corresponds with the main voltage in your home, if you are in any doubt about your supply contact your local electricity company.

The flexible mains lead is supplied connected to a B.S. 1363 fused plug having a fuse of 13 amp capacity.

Should this plug not fit the socket outlets in your home, it should be cut off and replaced with a suitable plug, following the procedure outlined below.

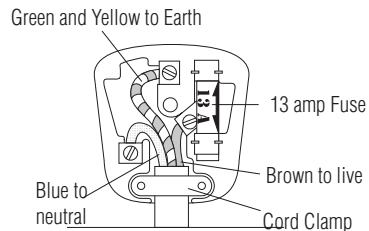
Note: Such a plug cannot be used for any other appliance and should therefore be properly disposed of and not left where children might find it and plug it into a supply socket - with the obvious consequent danger.

Please note: We recommend the use of good quality plugs and wall sockets that can be switched off when the machine is not in use.


IMPORTANT: The wires in the mains lead fitted to this appliance are coloured in accordance with the following code:

GREEN AND YELLOW
BLUE
BROWN

EARTH
NEUTRAL
LIVE



As the colours of the wires in the mains lead of this appliance may not correspond with the coloured markings identifying the terminals in your plug, proceed as follows:

- The wire which is coloured green and yellow must be connected to the terminal in the plug which is marked with the letter E or by the earth symbol  or coloured green or green and yellow.
- The wire which is coloured blue must be connected to the terminal which is marked with the letter N or coloured black.
- The wire which is coloured brown must be connected to the terminal which is marked with the letter L or coloured red.

When wiring the plug, ensure that all strands of wire are securely retained in each terminal. Do not forget to tighten the mains lead clamp on the plug. If your electricity supply point has only two pin socket outlets, or if you are in doubt, consult a qualified electrician.

Should the mains lead ever require replacement, it is essential that this operation be carried out by a qualified electrician and should only be replaced with a flexible cord of the same size.

After replacement of a fuse in the plug, the fuse cover must be refitted. If the fuse cover is lost, the plug must not be used until a replacement cover is obtained. The colour of the correct replacement fuse cover is that of the coloured insert in the base of the fuse recess or elsewhere on the plug. Always state this colour when ordering a replacement fuse cover.

Only 13amp replacement fuses which are as approved to B.S. 1362 should be fitted.

This appliance conforms to the Norms EN 55014 regarding the suppression of radio interference.

Warning - this appliance must be earthed