



De'Longhi Appliances
via Seitz, 47
31100 Treviso Italia

BEAN TO CUP ESPRESSO AND CAPPUCCINO MACHINE

Instruction for use



ESAM5400

ELECTRICAL REQUIREMENTS (UK ONLY)

Before using this appliance ensure that the voltage indicated on the product corresponds with the main voltage in your home, if you are in any doubt about your supply contact your local electricity company.

The flexible mains lead is supplied connected to a B.S. 1363 fused plug having a fuse of 13 amp capacity.

Should this plug not fit the socket outlets in your home, it should be cut off and replaced with a suitable plug, following the procedure outlined below.


Note: Such a plug cannot be used for any other appliance and should therefore be properly disposed of and not left where children might find it and plug it into a supply socket - with the obvious consequent danger.

N.B. We recommend the use of good quality plugs and wall sockets that can be switched off when the machine is not in use.

IMPORTANT: the wires in the mains lead fitted to this appliance are coloured in accordance with the following code:



As the colours of the wires in the mains lead of this appliance may not correspond with the coloured markings identifying the terminals in your plug, proceed as follows:

- The wire which is coloured green and yellow must be connected to the terminal in the plug which is marked with the letter E or by the earth symbol  or coloured green or green and yellow.
- The wire which is coloured blue must be connected to the terminal which is marked with the letter N or coloured black.
- The wire which is coloured brown must be connected to the terminal which is marked with the letter L or coloured red.

When wiring the plug, ensure that all strands of wire are securely retained in each terminal. Do not forget to tighten the mains lead clamp on the plug. If your electricity supply point has only two pin socket outlets, or if you are in doubt, consult a qualified electrician.

Should the mains lead ever require replacement, it is essential that this operation be carried out by a qualified electrician and should only be replaced with a flexible cord of the same size.

After replacement of a fuse in the plug, the fuse cover must be refitted. If the fuse cover is lost, the plug must not be used until a replacement cover is obtained. The colour of the correct replacement fuse cover is that of the coloured insert in the base of the fuse recess or elsewhere on the plug. Always state this colour when ordering a replacement fuse cover.

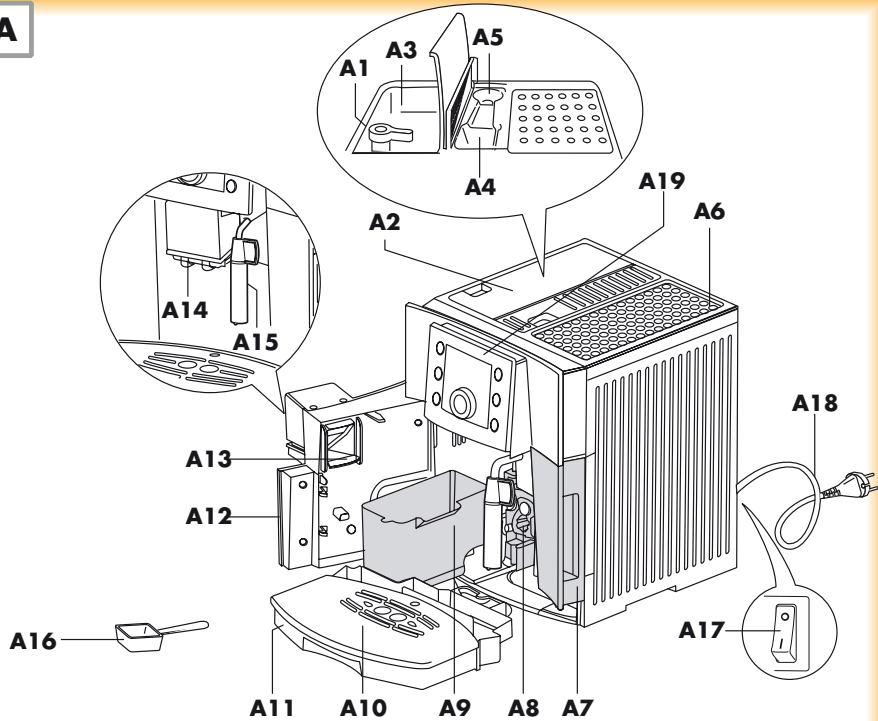
Only 13amp replacement fuses which are as approved to B.S. 1362 should be fitted.

This appliance conforms to the Norms EN 55014 regarding the suppression of radio interference.

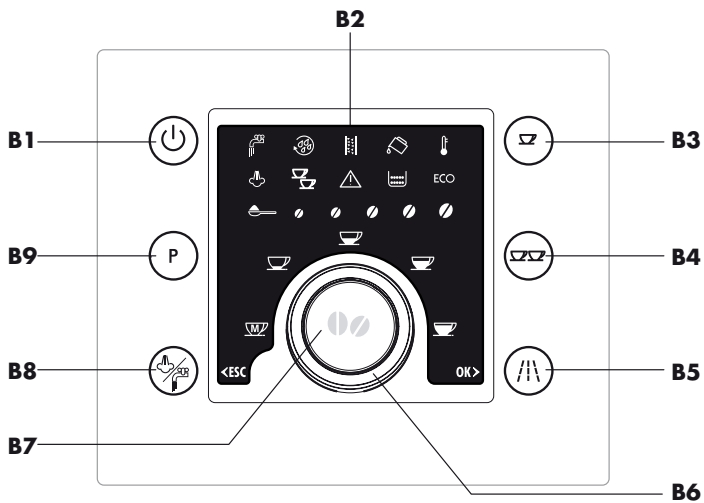
Warning - this appliance must be earthed

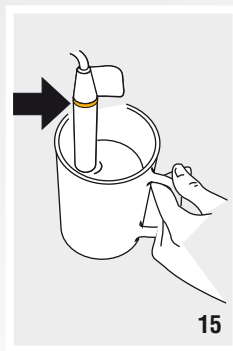
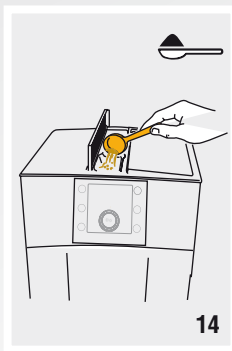
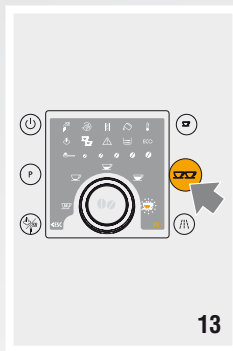
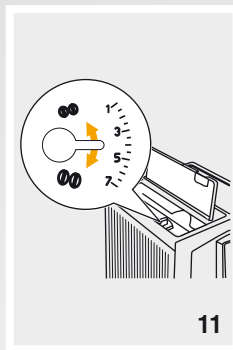
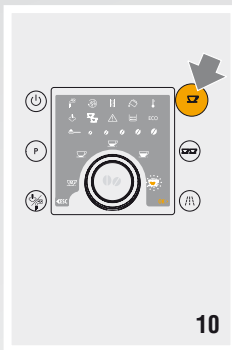
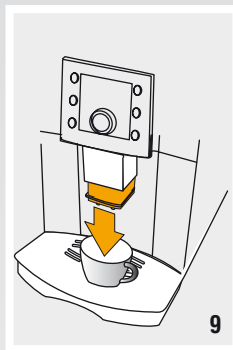
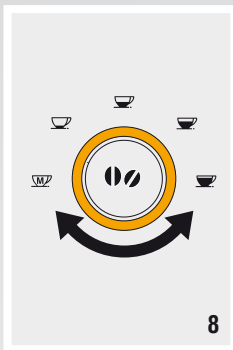
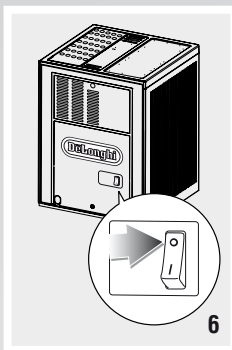
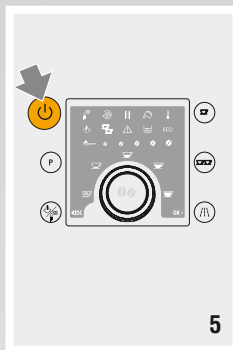
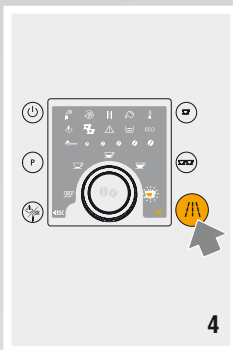
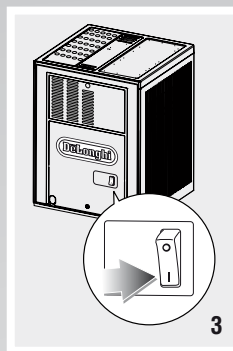
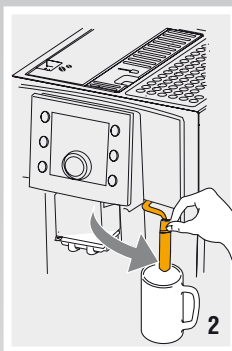
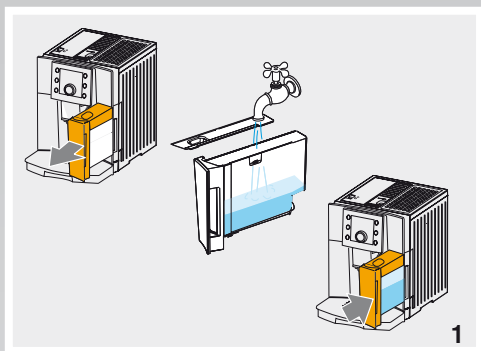
DESCRIPTION OF APPLIANCE

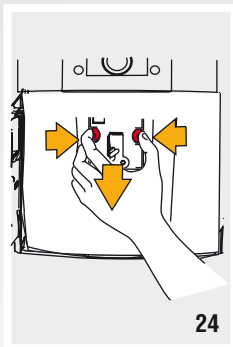
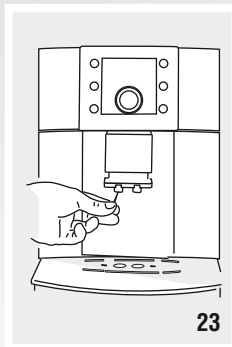
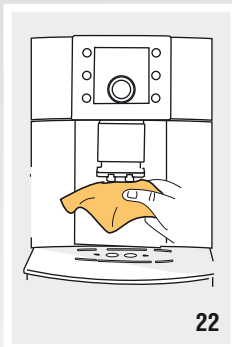
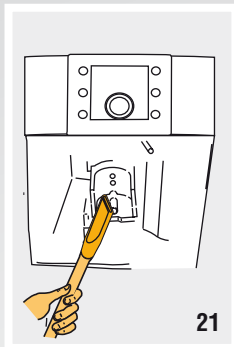
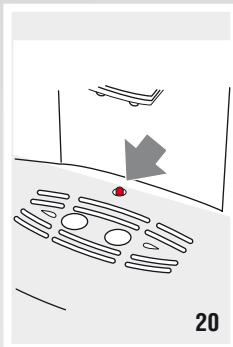
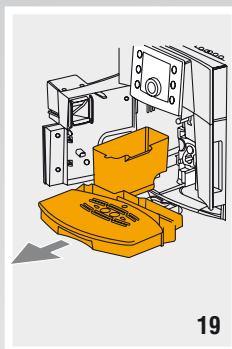
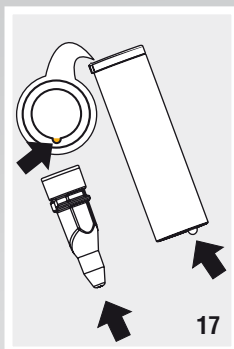
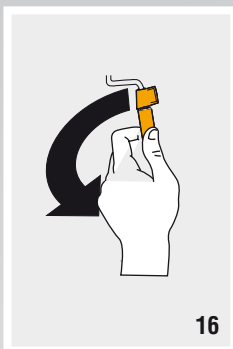
A



B







CONTENTS

ELECTRICAL REQUIREMENTS (UK ONLY).....	2
DESCRIPTION OF APPLIANCE	3
INTRODUCTION	7
Symbols used in these instructions	7
Letters in brackets	7
Troubleshooting and repairs	7
SAFETY	7
Fundamental safety warnings	7
DESIGNATED USE	7
INSTRUCTIONS	7
DESCRIPTION	8
Description of the appliance	8
Description of the control panel	8
Explanation of lights	8
PRELIMINARY CHECKS	8
Checking the appliance	8
Installing the appliance	8
Connecting the appliance	9
Setting up the Appliance	9
TURNING THE APPLIANCE ON FOR NORMAL USE	9
TURNING THE APPLIANCE OFF	9
MENU SETTINGS	9
Rinse	9
Descaling	10
Energy saving	10
Auto off (Stand by).....	10
Setting the temperature	10
Statistics function	10
Default values (reset).....	10
MAKING COFFEE	10
Selecting the coffee taste.....	10
Selecting the quantity of coffee in the cup.....	11
Customising the "MY COFFEE" quantity	11
Adjusting the coffee mill.....	11
Tips for a hotter coffee	11
Making coffee using coffee beans	11
Making coffee using pre-ground coffee	12
FROTHING THE MILK FOR CAPPUCCINO	12
Frothing milk for cappuccino.....	12
Cleaning the cappuccino nozzle after use.....	13
HEATING WATER	13
Preparation	13
Changing the quantity of hot water.....	13
CLEANING	13
Cleaning the coffee maker	13
Cleaning the coffee grounds container.....	13
Cleaning the drip tray	14
Cleaning the inside of the machine.....	14
Cleaning the water tank.....	14
Cleaning the coffee spouts	14
Cleaning the pre-ground coffee funnel	14
Cleaning the infuser.....	14
DESCALING.....	15
SETTING WATER HARDNESS.....	15
Measuring water hardness.....	15
Set water hardness	15
EXPLANATION OF LIGHTS	16
TECHNICAL SPECIFICATION.....	16
DISPOSAL.....	16
TROUBLESHOOTING	17

INTRODUCTION

Thank you for choosing this coffee machine. To get the very best out of your new coffee machine it is advisable to read these instructions before using the appliance. This is the only way to ensure optimum results and maximum safety. The manufacturer is not liable for damage deriving from the failure to comply with the user instructions.

Symbols used in these instructions

Important warnings are identified by these symbols. These warnings must absolutely be respected.



Danger!!

Failure to observe the warning could result in possibly life threatening injury from electric shock.



Important!

Failure to observe the warning could result in injury or damage to the appliance.



Danger of burns!!

Failure to observe the warning could result in scalds or burns.



Please note :

This symbol identifies important advice or information for the user.

Letters in brackets

The letters in brackets refer to the legend in the Description of the Appliance on page 3.

Troubleshooting and repairs

In the event of problems, first try and resolve them following the information given in the sections "Explanation of lights" on page 16 and "Troubleshooting" on page 17.

If this does not resolve the problem or you require further information, you should consult Customer Services by calling the number given on the annexed "Customer Service" sheet. If repairs are required, contact De'Longhi Customer Services only.

The addresses are given in the guarantee certificate provided with the machine.

SAFETY

Fundamental safety warnings



Danger!

This is an electrical appliance and may therefore cause electric shock.

You should therefore respect the following safety warnings:

- Never touch the appliance with damp hands or feet.
- Never touch the plug with damp hands.
- Make sure the socket used is freely accessible at all times, enabling the appliance to be unplugged when necessary.
- Unplug directly from the plug only. Never pull the power cable as you could damage it.
- To disconnect the appliance completely, place the main switch at the back of the appliance in the 0 position (fig. 6).
- If the appliance is faulty, do not attempt to repair. Turn it off, unplug from the mains socket and contact Customer Services.
- If the plug or power cable is damaged, it must be replaced by De'Longhi customer services only to avoid all risk.



Important!

Keep all packaging (plastic bags, polystyrene foam) away from children.



Important!

The appliance is not intended for use by persons (including children) with reduced physical, sensory or mental capabilities, or lack of experience and knowledge, unless they have been given supervision or instruction concerning use of the appliance by a person responsible for their safety. Children must be supervised to ensure they do not play with the appliance.



Danger : Risk of burns!

This appliance produces hot water and steam may form while it is in operation.

Avoid contact with splashes of water or hot steam.

DESIGNATED USE

This appliance is designed and made to prepare coffee and heat drinks. All other use is considered improper.

This appliance is not suitable for commercial use.

The manufacturer is not liable for damage deriving from improper use of the appliance.

This is a household appliance only. It is not intended to be used in:

- staff kitchen areas in shops, offices and other working environments;
- farm houses
- by clients in hotels, motels and other residential type environments
- bed and breakfast type environments.

INSTRUCTIONS

Read these instructions carefully before using the appliance.

- Failure to respect these instructions may result in burns or damage to the appliance.

- The manufacturer is not liable for damage deriving from failure to respect these instructions.



Please note :

Keep these instructions

If the appliance is passed to other persons, they must also be provided with these instructions.

DESCRIPTION

Description of the appliance

(page 3 - A)

- A1. Grinding adjustment dial
- A2. Beans container lid
- A3. Beans container
- A4. Pre-ground coffee funnel lid
- A5. Compartment for measure
- A6. Cup shelf (cup warming shelf when the "energy saving" function is deactivated)
- A7. Water tank
- A8. Infuser
- A9. Coffee grounds container
- A10. Cup tray
- A11. Drip tray
- A12. Service door
- A13. Coffee guide
- A14. Coffee spout (adjustable height)
- A15. Cappuccino nozzle
- A16. Measure
- A17. Main switch (on back of appliance)
- A18. Power cable
- A19. Control panel

Description of the control panel

(page 3 - B)

A number of buttons on the panel have a double function. This is indicated in brackets in the description.

- B1. On/Off button : turns the appliance on and off (stand by).
- B2. Indicator lights: indicate the current settings, alarm messages or need for maintenance
- B3. button: to make 1 cup of coffee with the settings displayed
- B3. button: to make 2 cups of coffee with the settings displayed.
- B5. button: to deliver steam to make hot drinks with milk. (When you access the MENU: "OK" button to confirm the selection made)
- B6. Selection dial: turn to select the required quantity of coffee. (When in the settings MENU, turn to select the required function).
- B7. aroma selection button: to select the coffee

taste

- B8. steam or hot water selection button.
(When you access the MENU: press the "ESC" button to exit from the selected function and go back to the main menu).
- B9. **P** button: to access the Programming menu.

Explanation of lights

- The Hot Water function is selected.
- The Steam function is selected.
- The rinse cycle is selected.
- Indicates the need to descale the appliance.
- Light: no water or water tank absent
- Light flashing: the machine is heating up or a rinse cycle is underway.
- The appliance is delivering two cups of coffee.
- An alarm is displayed on the control panel (see the section: "Explanation of lights").
- Light on steadily: the grounds container is missing and must be inserted in the appliance; Light flashing: the grounds container is full and must be emptied.
- <ESC** Indicates the button to press to exit the programming menu or selected function.
- OK >** Indicates the button to press to confirm the function selected in the programming menu.
- ECO** "Energy Saving" mode is active.

PRELIMINARY CHECKS

Checking the appliance

After removing the packaging, make sure the product is complete and undamaged and that all accessories are present. Do not use the appliance if it is visibly damaged. Contact De'Longhi Customer Services. Please see enclosed guarantee leaflet.

Installing the appliance



Important!

When installing the appliance, respect the following safety warnings:

- The appliance gives off heat. After positioning the appliance on the worktop, leave a space of at least 3 cm between the surfaces of the appliance and the side and rear walls and at least 15 cm above the coffee maker.
- Water penetrating the coffee maker could cause damage. Do not place the appliance near taps or sinks.
- The appliance could be damaged if the water it contains freezes.

Do not install the appliance in a room where the temperature could drop below freezing point.

- Arrange the power cable in such a way that it cannot be damaged by sharp edges or contact with hot surfaces (e.g. electric hot plates).

Connecting the appliance



Important!

Check that the mains power supply voltage corresponds to the value indicated on the rating plate on the bottom of the appliance.

Connect the appliance to an efficiently earthed and correctly installed socket with a minimum current rating of 10A only.



If the power socket does not match the plug on the appliance, have the socket replaced with a suitable type by a qualified professional.

Setting up the Appliance



Please note :

- Coffee has been used to factory test the appliance and it is therefore completely normal for there to be traces of coffee in the mill.
The machine is, however, guaranteed to be new.
- You should customise water hardness as soon as possible following the instructions in the section "Setting water hardness" on page 15.

1. Remove the water tank, fill to the MAX line with fresh water then replace in the appliance (fig. 1).
2. Turn the cappuccino nozzle outwards and place a container with a minimum capacity of 100 ml underneath (fig. 2).
3. Plug the appliance into the mains socket and place the main switch on the back of the appliance in the **I** position (fig. 3).
4. The  light comes on and OK flashes.
5. Press the **OK > / ! ** button (fig. 4). After a few seconds, the appliance delivers hot water and the  light comes on.

The appliance ends the first start up procedure and goes off. The coffee maker is now ready for normal use.



Please note:

- When using the appliance for the first time, you need to make 4/5 cups of coffee and 4/5 cappuccinos before the appliance starts to give satisfactory results.

TURNING THE APPLIANCE ON FOR NORMAL USE



Please note:

Before turning the appliance on, make sure the main switch on the back of the appliance is in the **I** position (fig. 3).




Each time the appliance is turned on, it performs an automatic preheat and rinse cycle which cannot be interrupted. The appliance is ready for use only after completion of this cycle.




Danger of burns!

During rinsing, a little hot water comes out of the coffee spouts and is collected in the drip tray underneath.

Avoid contact with splashes of water.

- To turn the appliance on, press the  button (fig. 5):
The  light flashes while the appliance is heating up and performing an automatic rinse cycle. By circulating hot water, the appliance heats both the boiler and the internal circuits .

The appliance is at temperature when the  light goes off and the lights corresponding to the selected coffee taste and quantity come on.

TURNING THE APPLIANCE OFF

Each time the appliance is turned off, it performs an automatic rinse cycle which cannot be interrupted.



Important!


To avoid damaging the appliance, always press the  button to switch off the appliance.



Danger of burns!

During rinsing, a little hot water flows from the coffee spouts.

Avoid contact with splashes of water.

To turn the appliance off, press the  button (fig. 5). The appliance performs a rinse cycle, then goes off.



Please note:

If the appliance is not used for an extended period, place the main switch in the **0** position (fig. 6).

Never place the main switch in the **0** position while the appliance is on.

MENU SETTINGS

When you access the programming menu by pressing the **P** button; the following menu settings are available: Rinse, Decalcificazione, Descale, Auto-off, Set temperature, Water hardness, Statistics, Default values.

Rinse



For instructions on rinsing, see "Tips for a hotter coffee", page 11.

Descaling

For instructions on descaling, see page 15.

Energy saving

Use this function to enable or disable energy saving mode. This mode is active by default (ECO light on), reducing energy consumption while the machine is on in compliance with current European regulations.

1. Press the **P** button to enter the menu;
2. Turn the selection dial until the ECO light comes on.
3. Press the **OK** > **/||** button to activate, or  < **ESC** to deactivate, the energy saving function.
4. When activated, press the  < **ESC** button to exit the menu.




Please note!

When the "ECO" function is deactivated, the cup warming shelf is automatically activated.

- When the "ECO" function is activated, if the appliance is not used for 1 minute, the lights reduce their intensity.

Auto off (Stand by)

Auto-off can be set so that the appliance goes off, if not used, after 15 or 30 minutes, or after 1, 2 or 3 hours.

1. Press the **P** button to enter the menu;
2. Turn the selection dial until the  light comes on;
3. Press the **OK** > **/||** button to select the function;
4. Turn the selection dial until the lights corresponding to the number of hours before the appliance goes off automatically:

15 minutes 

30 minutes  

1 hour   

2 hours    


3 hours     

5. Press the **OK** > **/||** button to confirm;
6. Press the  < **ESC** button to exit the menu.

Auto-off is programmed.




Setting the temperature

To modify the temperature (low, medium, high) of the water used to make the coffee, proceed as follows:

1. Press the **P** button to enter the menu;
2. Turn the selection dial until the  light comes on;
3. Press the **OK** > **/||** button;
4. Turn the selection dial until the lights corresponding to the required temperature come on:

LOW 

MEDIUM  

HIGH   

5. Press the **OK** > **/||** button to confirm;
6. Press the  < **ESC** button to exit the menu.


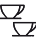

Setting water hardness

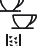
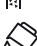
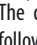
For instructions on setting water hardness, see page 15.

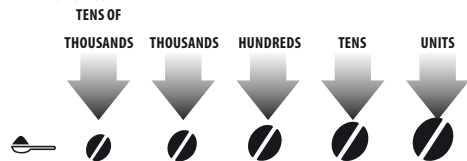
Statistics function


This displays statistics relating to the machine.

To display, proceed as follows:

1. Press the **P** button to enter the menu;
2. Turn the selection dial until the    lights come on;
3. Press the **OK** > **/||** button;
4. When the selection dial is turned and the corresponding light flashes, the following information is displayed:

-  how many coffees have been made;
-  how many times the machine has been descaled;
-  the total number of litres of water delivered;
- 5. The quantities are indicated by the flashing beans as follows:


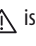


Example: you want to know how many coffees have been made. Enter the menu and select the .



Default values (reset)

This resets all menu settings and programmed quantities back to the default values.

1. Press the **P** button to enter the menu;
2. Turn the selection dial until until   is displayed;
3. Press the **OK** > **/||** button: **OK** light flashes;
4. Press the **OK** > **/||** button to confirm and exit.


MAKING COFFEE

Selecting the coffee taste

The appliance is set by default to make coffee with a standard taste.

You can also choose one of these tastes:






-  Extra-mild taste
-  Mild taste
-  Standard taste
-  Strong taste
-  Extra-strong taste

To change the taste, press the  button (fig. 7) repeatedly until the required taste is displayed.

Selecting the quantity of coffee in the cup

The appliance is set by default to make a standard quantity of coffee.



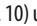

To select the quantity of coffee, turn the selection dial until the light corresponding to the required quantity of coffee comes on (fig. 8):

Selected coffee	Quantity in cup (ml)
MY COFFEE 	programmable from 20 to 180
ESPRESSO 	≈40
NORMAL 	≈60
LONG 	≈90
EXTRA LONG 	≈120

Customising the “MY COFFEE” quantity

The appliance is set by default to automatically deliver 30 ml of “my coffee”.

To modify these settings, proceed as follows:

- Place a cup under the coffee spouts (fig. 9).
- Turn the selection dial until the  light comes on.
- Press the 1 cup button  (fig. 10) until the  light starts flashing and the appliance starts delivering coffee, then release the button.
- As soon as the coffee in the cup reaches the desired level, press the 1 cup button  again.

The quantity of coffee in the cup has now been programmed.

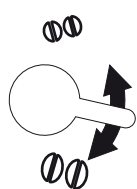
Adjusting the coffee mill

The coffee mill is preset in the factory to make coffee correctly and should not require adjusting initially. However, if after making the first few coffees you find that the coffee is too thin and not creamy enough or that delivery is too slow (a drop at a time), this can be corrected by adjusting the grinding adjustment dial (fig. 11).

Please note!

The grinding adjustment dial must only be turned when the

coffee mill is in operation.



If the coffee is delivered too slowly or not at all, turn one click clockwise towards “7”.

For fuller bodied creamier coffee, turn one click anticlockwise towards “1” (do not turn more than one click at a time otherwise the coffee could be delivered a drop at a time).

Please note!

These adjustments will only be evident after at least 2 cups of coffee have been delivered.

If this adjustment does not obtain the desired result, turn the dial another click only when the grinder is in operation.


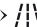



Tips for a hotter coffee

For a hotter coffee, before delivery you are recommended to rinse the appliance through, as follows:



Danger of burns!

During rinsing, a little hot water comes out of the coffee spouts and is collected in the drip tray underneath. Avoid contact with splashes of water.

- Press the **P** button to enter the menu;
- Turn the selection dial until  light comes on;
- Press the **OK** >  button to select the function: **OK** light flashes;
- Press the **OK** >  button to start the function (or the  < **ESC** button to exit); the  light flashes.
- Hot water is flushed through the coffee spouts.
- Once finished, the appliance is ready to make coffee. .



Please note:

The manual rinse, can be interrupted by pressing the **OK** >  button.

For hotter coffee, you should also:

- activate the warmer cup shelf and put the cups on it;
- warm the cups with hot water (using the hot water function);
- select the “high” coffee temperature in the menu.

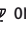
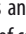
Making coffee using coffee beans



Important!

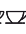
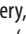

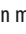
Do not use caramelised or candied coffee beans as they could stick to the coffee mill and make it unusable.

- Fill the container with coffee beans (fig. 12).
- Place under the coffee spouts:

- 1 cup if you want one coffee (fig. 9);
 - 2 cups if you want 2 coffees.
3. Lower the spouts as near as possible to the cup. This makes a creamier coffee (fig. 9).
 4. Press the button corresponding to the number of coffees required (1 cup  or 2 cups  (fig. 10 and 13).
 5. Preparation begins and the lights corresponding to the taste and quantity of coffee selected are displayed.

Once the coffee has been made, the appliance prepares for use again.

Please note:

- While the coffee maker is making coffee, delivery can be interrupted at any time by pressing one of the two coffee buttons ( or ).
- At the end of delivery, to increase the quantity of coffee in the cup, just press (within 3 seconds) one of the coffee buttons ( or .

Once the coffee has been made, the appliance is ready to use again.

Important!

If the coffee is delivered a drop at a time, too thin and not creamy enough or too cold, read the tips in the "Troubleshooting" section on page 17.

Lights may be displayed on the control panel during use. Their meaning is given in the section "Explanation of the lights" on page 16.

Making coffee using pre-ground coffee

Important!




- Never add pre-ground coffee when the machine is off or it could spread through the inside of the machine and dirty it. This could damage the appliance.



Never use more than 1 level measure or it could dirty the inside of the coffee maker or block the funnel.

Please note!

If you use pre-ground coffee, you can only make one cup of coffee at a time.

1. Press the  button repeatedly (fig. 7) until the  light flashes.
2. Put one level measure of pre-ground coffee into the funnel (fig. 14).
3. Place a cup under the coffee spouts (fig. 9).
4. Press the 1 cup coffee  button (fig. 10).

5. Preparation begins.

Once finished, the appliance is ready.

FROTHING THE MILK FOR CAPPUCCINO



Important! Danger of burns

During preparation, steam is given off. Take care to avoid scalds.

Frothing milk for cappuccino


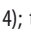
Please note!

To make cappuccino, prepare coffee in a large cup and then add frothed milk.

1. Turn the cappuccino nozzle outwards and place an empty container underneath (fig. 2).
2. Press the  button until the  comes on.




Please note!


To avoid residual water being mixed with the milk during frothing, you should deliver the water first. To do this, allow the water mixed with the steam to flow for a few seconds until only steam comes out.

3. Press the **OK** >  button (fig. 4); the  light flashes indicating that the appliance is reaching the ideal temperature for this function: when the appliance reaches the ideal temperature, the light comes on and the appliance begins producing steam. Interrupt by pressing the same button again.
4. Empty the container and fill with about 100 grams of milk for each cappuccino to be prepared. In choosing the size of the container, bear in mind that the milk can double or triple in volume.

Please note!

For a richer denser froth, use skimmed or partially skimmed milk at refrigerator temperature (about 5°C). To avoid milk with poor froth or large bubbles, always clean the cappuccino nozzle as described in the section "Cleaning the cappuccino nozzle after use" (page 13).

5. Immerse the cappuccino nozzle in the milk container (fig. 15) taking care not to immerse the raised line on the cappuccino nozzle (shown by the arrow in fig. 15).
6. Check if the  light is on, or select the function by pressing again the  button: press the  button. Steam is delivered from the cappuccino nozzle, giving the milk a creamy frothy appearance and increases in volume.

7. To obtain a creamier froth, rotate the container with slow upward movements. (You should not deliver steam for more than 3 minutes at a time);
8. When you have obtained the required froth, stop steam delivery by pushing the  button again.



Important! Danger of burns

Stop steam delivery before removing the container with the frothed milk to avoid burns caused by splashes of hot milk.

10. Add the frothed milk to the cup of coffee prepared previously.

The cappuccino is ready. Sweeten to taste and, if desired, sprinkle the froth with a little cocoa powder.


Cleaning the cappuccino nozzle after use

Clean the cappuccino nozzle each time you use it to avoid the build-up of milk residues or blockages.



Important! Danger of burns

When cleaning the cappuccino nozzle, a little hot water comes out. Avoid contact with splashes of water.

1. Discharge a little water for a few seconds by pushing the  button. Then push the same button to stop the flow of hot water.
2. Wait for a few minutes for the cappuccino nozzle to cool down, hold the handle of the cappuccino tube in one hand and with the other rotate the cappuccino nozzle anticlockwise (fig.16) then remove by pulling downwards.
3. Wash all parts of the cappuccino nozzle thoroughly with warm water.
4. Make sure the two holes shown by the arrows in fig. 17 are not blocked. If necessary, clean with a pin.
5. Replace the inner section by inserting it carefully onto the adjustable tube, then insert the steam nozzle and turn anticlockwise to lock it in place.

HEATING WATER





Preparation



Important! Danger of burns.

Never leave the machine unsupervised while delivering hot water. Stop delivery of hot water as described below when the cup is full. The hot water spout becomes hot while water is being delivered and must be held by the handle only.

1. Place a container under the nozzle (as close as possible to avoid splashes) (fig. 2).

2. Press the  button until the  light comes on.
3. Press the  button (fig. 4): water flows out of the spout. Delivery stops automatically after 250ml.
4. To interrupt delivery of hot water manually, press the  button again.



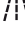




Please note!

- If energy saving has been enabled, delivery could be delayed a few seconds.
- You should not deliver hot water for more than 3 minutes at a time.

Changing the quantity of hot water

The appliance is set by default to automatically deliver 250ml of hot water. To modify these quantities, proceed as follows:

1. Position a container under the spouts.
2. Press the  button until the  light comes on.
3. Press and hold the  button until the  light flashes.
3. When the hot water in the cup reaches the required level, press the  button again.

The machine is now reprogrammed with the new quantity.

CLEANING

Cleaning the coffee maker

The following parts of the machine must be cleaned regularly:


- coffee grounds container (A9),
- drip tray (A11),
- inside the machine, accessible after opening the service door (A12),
- water tank (A7),
- coffee spouts (A14) and hot water nozzle/cappuccino nozzle (A15),
- pre-ground coffee funnel (A4),
- infuser (A8).



Important!

- Do not use solvents, abrasive detergents or alcohol to clean the coffee maker. With De'Longhi automatic coffee makers, do not need to use chemical products to clean the machine.
- None of the components of the appliance can be washed.
- Do not use metal objects to remove encrustations or coffee deposits as they could scratch metal or plastic surfaces.

Cleaning the coffee grounds container

When the  light flashes, the coffee grounds container needs emptying. Unless you clean the grounds container, the light will continue to flash and the appliance cannot be used

to make coffee. Even if not full, the empty grounds container message is displayed 72 hours after the first coffee has been prepared. For the 72 hours to be calculated correctly, the machine must never be turned off with the main switch in the 0 position. To clean (with the machine on):

- Open the service door on the front of the appliance (fig. 18), extract the drip tray (fig. 19), empty and clean.
- Empty the grounds container and clean thoroughly to remove all residues left on the bottom.

Important!

When removing the drip tray, the grounds container **must** be emptied, even if it contains few grounds.

If this is not done, when you make the next coffees, the grounds container may fill up more than expected and clog the machine.

Cleaning the drip tray

Important!

If the drip tray is not emptied regularly, the water could overflow from the edge and seep inside or around the machine. This could damage the machine, the surface it rests on or the surrounding area.

The drip tray is fitted with a level indicator (red) showing the level of water it contains (fig. 20).

Before the indicator protrudes from the cup tray, the drip tray must be emptied and cleaned.

To remove the drip tray:

1. Open the service door on the front of the appliance (fig. 18);
2. Remove the drip tray and the grounds container (fig. 19);
3. Empty the drip tray and grounds container and wash them;
4. Replace the drip tray and grounds container.
5. Close the service door.

Cleaning the inside of the machine

Danger of electric shock!

Before cleaning internal parts, the machine must be turned off (see "Turning off") and unplugged from the mains power supply.

Never immerse the coffee maker in water.

1. Check regularly (about every 100 coffees) that the inside of the appliance (accessible after removing the drip tray) is not dirty. If necessary, remove coffee deposits with the brush or a sponge.
2. Remove the residues with a vacuum cleaner (fig. 21).

Cleaning the water tank

1. Clean the water tank (A7) regularly (about once a month) with a damp cloth and a little mild washing up liquid.
2. After cleaning the water tank rinse it thoroughly to remove all washing up liquid residues.

Cleaning the coffee spouts

1. Clean the coffee spouts with a sponge or cloth (fig. 22).
2. Check the holes in the coffee spout are not blocked. If necessary, remove coffee deposits with a toothpick (fig. 23).

Cleaning the pre-ground coffee funnel

Check regularly (about once a month) that the pre-ground coffee funnel (A4) is not blocked. If necessary, remove coffee deposits with the brush.

Cleaning the infuser

The infuser (A8) must be cleaned at least once a month.

Important!

The infuser must not be extracted when the machine is on.

1. Make sure the machine is correctly turned off (see Turning off, page 9).
2. Open the service door (fig. 18).
3. Remove the drip tray and grounds container (fig. 19).
4. Press the two red release buttons inwards and at the same time pull the infuser outwards (fig. 24).

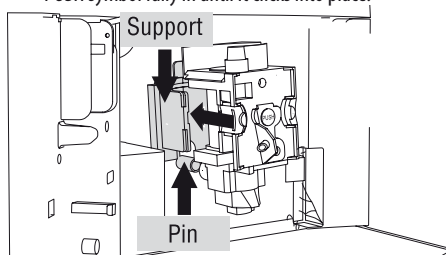
Important!

RINSE WITH WATER ONLY

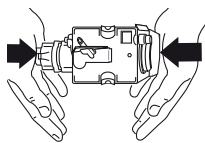
NO WASHING UP LIQUID - NO DISH WASHER

Do not use washing up liquid to clean the infuser as it could cause damage.

5. Soak the infuser in water for about 5 minutes, then rinse under the tap.
6. After cleaning, replace the infuser by sliding it onto the internal support and pin at the bottom, then push the PUSH symbol fully in until it clicks into place.



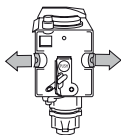
Please note!



If you encounter difficulty inserting the infuser, before inserting it you must adapt it to the right dimension by pressing it forcefully from the bottom and

top as shown in the figure.

7. Once inserted, make sure the two red buttons have snapped out.
8. Replace the drip tray and grounds container.
9. Close the service door.



DESCALING

Descale the appliance when the light on the panel flashes.



Important!

Descaler contains acids which may irritate the skin and eyes. It is vital to respect the manufacturer's safety warnings given on the descaler pack and the warnings relating to the procedure to follow in the event of contact with the skin and eyes.



Please note!

Use De'Longhi recommended descaler only. Under no circumstances should you use sulphamic or acetic based descalers. Their use invalidates the guarantee. Failure to descale the appliance as described also invalidates the guarantee.

1. Turn the machine on.
2. Press the **P** button to enter the menu.
3. Turn the selector dial until the light flashes. Press **OK** > : the **OK** light flashes. Press **OK** > : the and lights alternates.
4. Completely empty the water tank (A7); empty the drip tray (A11) and the coffee grounds container, then reinsert them.

Pour the descaler diluted with water (respecting the proportions indicated on the descaler pack) into the water tank and reinsert it.

Place an empty container with a minimum capacity of 1.5 litres under the hot water spout.



Important! Danger of burns!

Hot water containing acid flows from the cappuccino nozzle. Avoid contact with splashes of water.

5. Press the **OK** > button: the descaling programme starts and the descaler liquid comes out of the cappuccino nozzle.

The descale programme automatically performs a series of rinses and pauses to remove limescale deposits from inside the machine: the light flashes.

After about 30 minutes, the water tank is empty. The **OK** and lights comes on and the and lights come on.

6. The appliance is now ready for rinsing thoroughly with clean water. Remove the water tank, empty, rinse under running water, fill with clean water and replace.
7. Empty the container used to collect the descaler solution and replace it empty under the cappuccino nozzle.
8. Press the **OK** > button to start rinsing. Hot water comes out of the spout and and lights come on.
9. When the water tank is completely empty, the and **OK** lights come on.
10. Press the **OK** > button: the appliance switches automatically off.

Before switching on the appliance by pressing the button, empty the drip tray.

SETTING WATER HARDNESS

The light comes on after a period of time established according to water hardness.

The machine is set by default for a hardness value of 4 (very hard water). The machine can also be programmed according to the hardness of the mains water in the various regions so that the machine needs to be descaled less often.

Measuring water hardness

1. Remove the "TOTAL HARDNESS TEST" indicator paper attached to this manual from its pack.
2. Immerse the paper completely in a glass of water for one second.
3. Remove the paper from the water and shake lightly. After about a minute, 1, 2, 3, or 4 red squares form, depending on the hardness of the water. Each square corresponds to one level.

Level 1

Level 2

Level 3

Level 4

Set water hardness

1. Press the **P** button to enter the menu.
2. Turn the selector dial until the light is selected.
3. Confirm the selection by pressing the **OK** > button.

- Turn the selection dial and set the level shown by the indicator paper (see previous paragraph).



- Press the **OK** > button to confirm the setting.
- Press the < **ESC** button to exit the menu.

The machine is now reprogrammed with the new water hardness setting.

TECHNICAL SPECIFICATION

Voltage:	220-240 V~ 50/60 Hz max. 10A
Absorbed power:	1450W
Pressure:	15 bar
Water tank capacity:	1,7 L
Size LxHxD:	284x380x440 mm
Cable length:	1,5 m
Weight:	11,4 Kg
Coffee beans container capacity:	250 g

CE The appliance complies with the following EC directives:

- EC Regulation 1275/2008 for standby
- Low Voltage Directive 2006/95/EC and subsequent amendments;
- EMC Directive 2004/108/EC and subsequent amendments
- Materials and accessories coming into contact with food conform to EEC regulation 1935/2004.









DISPOSAL



In compliance with European directive 2002/96/EC, the appliance must not be disposed of with household waste, but taken to an authorised waste separation and recycling centre.

EXPLANATION OF LIGHTS

LIGHT	POSSIBLE CAUSE	REMEDY
	Insufficient water in the tank.	Fill the tank with water and insert it correctly, pushing it as far as it will go until it clicks into place.
 FLASH <i>alternating to</i> OK > FLASHES	The grinding is too fine and the coffee is delivered too slowly	Repeat coffee delivery and turn the grinding adjustment dial (fig. 10) one click clockwise towards "7" while the coffee mill is in operation. If after making at least 2 coffees delivery is still too slow, repeat the correction procedure, turning the grinding adjustment dial another click until delivery is correct
	FLASHES	Empty the grounds container and clean, then replace. Important: when removing the drip tray, the grounds container must be emptied, even if it contains few grounds. If this is not done, when you make the next coffees, the grounds container may fill up more than expected and clog the machine.
	FLASHES	After cleaning, the grounds container has not been replaced.
 FLASHES	The "pre-ground coffee" function has been selected without placing any pre-ground coffee in the funnel.	Place pre-ground coffee in the funnel or deselect the "pre-ground" function.
	FLASHES	The machine must be descaled. The descaling procedure described in the "Descaling" section needs to be performed as soon as possible.

    FLASHES	Too much coffee has been used.	Select a milder taste or reduce the quantity of pre-ground coffee.
  FLASHES	The coffee beans have run out.	Fill the beans container
	The pre-ground coffee funnel is clogged.	Empty the funnel with the help of a brush as described in the section "Cleaning the pre-ground coffee funnel".
 FLASHES	The infuser has not been replaced after cleaning.	Insert the infuser as described in the paragraph "Cleaning the infuser".
	The service door is open	Close the service door.
	The inside of the appliance is very dirty.	Clean the inside of the appliance thoroughly, as described in the section "Cleaning and maintenance". If the message is still displayed after cleaning, contact a Customer Service.
ECO	The function is active and reduces electricity consumption.	Disable the function in the menu.

TROUBLESHOOTING

Below is a list of some of the possible problems. If the problem cannot be resolved as described, contact a Customer Service.

PROBLEM	POSSIBLE CAUSE	SOLUTION
The coffee is not hot	The cups were not preheated.	Enable the cup warmer, leave the cups at least 20 minutes to warm up. Warm the cups by rinsing them with hot water (using the hot water function).
	The infuser has cooled down because 2/3 minutes have elapsed since the last coffee was made.	Before making the coffee, heat the infuser by using the "rinsing" function.
	A low coffee temperature is set.	Set a high coffee temperature in the menu.
The coffee is not creamy enough.	The coffee is ground too coarsely.	Turn the grinding adjustment dial one click clockwise towards "7" while the coffee mill is in operation (fig. 11). Continue one click at a time until coffee delivery is satisfactory. The effect is only visible after delivering 2 coffees.
	The coffee is unsuitable.	Use a type of coffee for espresso coffee makers.
The coffee is delivered too slowly or a drop at a time.	The coffee is ground too finely.	Turn the grinding adjustment dial one click clockwise towards "7" while the coffee mill is in operation (fig. 11). Continue one click at a time until coffee delivery is satisfactory. The effect is only visible after delivering 2 coffees.
The coffee does not come out of the spouts, but from around the service door.	The spouts are blocked.	Clean the spouts with a toothpick, sponge or hard bristled kitchen brush.
	The coffee guide is blocked.	Thoroughly clean the coffee guide, particularly near the hinges.
Water comes out of the spouts instead of coffee.	The pre-ground coffee funnel is clogged.	Empty the funnel with the help of a knife, as described in the section "Cleaning the pre-ground coffee funnel".
The frothed milk has large bubbles	The milk is not cold enough or is not semi-skimmed.	You should ideally use skimmed or semi-skimmed milk at refrigerator temperature (about 5°C). If the result is still disappointing, try another brand of milk.
The milk is not frothed.	Cappuccino nozzle dirty.	Clean as described in the section "Cleaning the cappuccino nozzle after use".
The appliance does not come on.	It is not plugged into the mains socket.	Plug into the mains socket.
	The main switch is in the 0 position.	Place the main switch in the I position (fig. 1).