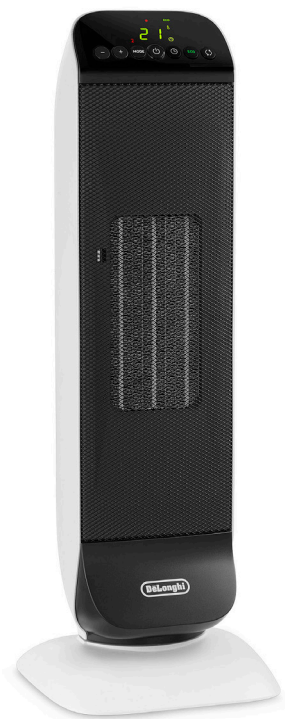
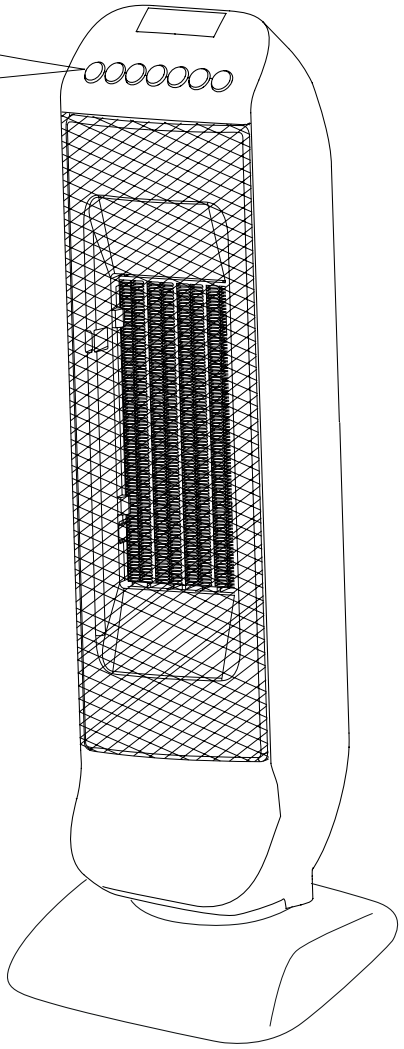
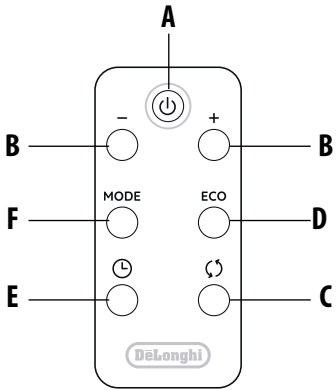
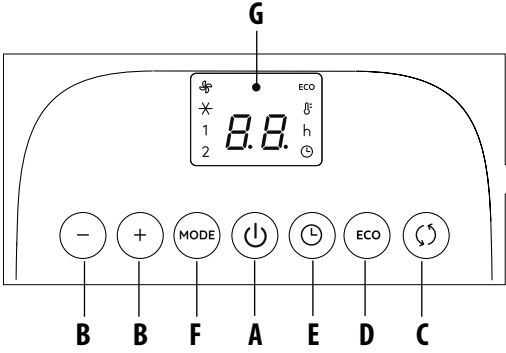

HFX25 Series

CERAMIC FAN HEATER

Instructions for use



DeLonghi



IMPORTANT WARNINGS

Safety warnings



Danger!

Failure to observe the warning may result in life threatening injury by electric shock.

- The appliance must not be placed immediately under a fixed power socket.
- Do not use the appliance near showers, bathtubs, sinks, swimming pools, etc.
- If the power cable is damaged, it must be replaced by the manufacturer, an authorised service centre or a qualified electrician in order to eliminate all risk.



Important!

Failure to observe the warning could result in injury or damage to the appliance.

- This appliance is not intended for use by persons (including children) with reduced physical, sensory or mental capabilities, or lack of experience and knowledge, unless they have been given supervision or instruction concerning use of the appliance by a person responsible for their safety. Children should be supervised to ensure that they do not play with the appliance.

CAUTION — Some parts of this product can become very hot and cause burns. Particular attention has to be given where children and vulnerable people are present.

- **CAUTION:** To avoid the safety system resetting accidentally, this appliance must not be powered through an external on/off device such as a timer, or

connected to a circuit which is turned off and on regularly by the energy supplier.

- **WARNING:** Do not use this heater in small rooms when they are occupied by persons not capable of leaving the room on their own, unless constant supervision is provided.



Danger of burns!!

Failure to observe the warning could result in burns or scalds.

- **WARNING:** To avoid overheating, never under any circumstances cover the appliance during operation as this would lead to a dangerous rise in temperature.
- **WARNING:** To reduce the risk of fire the air intake grille must be kept at a distance of at least 50cm from walls, furniture, fabric or other flammable material while the air outlet grille must be kept at a distance of at least 1m from them.



Symbol meaning



This symbol indicates:

Class II equipment (If provided)



Please note:

This symbol indicates recommendations and important information for the user.

- Use this heater on a horizontal and stable surface.
- Always use the appliance in an upright position.
- Do not use this heater if it has been dropped.
- Do not use if there are visible signs of damage to the heater.
- The use of extension leads is not recommended. However if they cannot

be avoided, follow the instructions accompanying the extension lead and never exceed the power limit marked on the extension.

- Do not use the appliance near walls, furniture, curtains, etc.
- Do not use the appliance in rooms with a floor area of less than 4m².
- Before putting the appliance away, make sure it is completely off and unplugged from the mains socket. Do not store in dusty atmospheres.
- Do not rest anything on the appliance.
- The appliance must not be hung.
- Some models are supplied with a device which delays of few seconds the fan shut off.
- Do not use the appliance to dry laundry. Do not obstruct the air intake and outlet area (danger of overheating).

Important!

- **WARNING - KEEP BATTERIES OUT OF REACH OF CHILDREN.**
- Swallowing may lead to serious injury in as little as 2 hours or death, due to chemical burns and potential perforation of the oesophagus.
- Examine devices and make sure the battery compartment is correctly secured. Do not use if compartment is not secure.
- Dispose of used button batteries immediately and safely. Flat batteries can still be dangerous.

Fundamental safety warnings

Dear customer - the plug on the appliance heats up during use. This is completely normal.

This HIGH POWER HEATING APPLIANCE complies with our usual high standards. You should, however, make sure that your power socket is in good condition and that the plug on the appliance is plugged into the socket correctly to avoid accidental overheating. If the appliance is used for long periods of time, we recommend checking the plug and mains socket regularly. If in doubt, consult an electrician.

DESCRIPTION

- A** ON/STANDBY button
- B** +/- Adjustment buttons
- C** Oscillation button
- D** ECO function button
- E** Timer button
- F** MODE button (for selecting the operating mode)
- G** Power indicator light

USE

Installation

The appliance can be used on any horizontal surface.

Do not overload the electrical circuit. Avoid using the same socket for other appliances.

Electrical connection

- Before plugging the appliance into the outlet, check that the power supply corresponds to the value indicated on the rating plate and that the power supply is adequate for the load.

Operation and use

- Connect the appliance to the power outlet.
- The appliance emits a beep and the power indicator light (G) also comes on and remains lit while power to the appliance is on. The appliance goes into STANDBY.
- Press the ON/STANDBY button (A) to turn on the appliance. It will begin to heat with the predefined settings.
- Press the MODE button (F) to select one of the following functions available:
 - **Ventilation** ✖
In this operating mode only the fan operates, so the appliance does not heat the room.
 - **Anti-freeze** ✖

In this operating mode the appliance keeps the room at a temperature of 7 °C (45 °F) to prevent freezing temperatures.

- **Heating 1 and Heating 2**

In this operating mode you can set the desired temperature by pressing the + and - adjustment buttons (B).

- **Heating 1 (minimum power level):**

The appliance operates at the minimum power, reducing noise and energy consumption to the minimum.

- **Heating 2 (maximum power level):**


The appliance operates at the maximum power for rapid heating of the room.

ECO function

In this operating mode the appliance will automatically set the power level to guarantee the best comfort reducing the energy consumption.


In this operating mode the unit may switch the heating power level from maximum to minimum and vice versa, several times in an hour. When using the ECO function, the maximum temperature setting is 26 °C (79 °F). To activate this function, press the ECO button (D).

Oscillation button

If you want the appliance to distribute the airflow over a larger area, press the oscillation button (C) . The appliance will then oscillate right and left. To stop the oscillation in the desired position, just press oscillation button (C) again.


Turn the appliance off

To turn off the appliance press button ON/STANDBY (A). The display could show the count down for about 6 seconds. To completely turn off the appliance, remove the plug from the socket.


 **Please note:** The display can show the temperature in both °F and °C. To change the temperature scale, press and hold the + key for approximately 10 seconds, then release. Please be aware that the temperature shown may not correspond exactly to the actual temperature.



24-HOUR DIGITAL TIMER

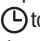

This function can be activated from any operating mode.

Delayed switch-on: with the appliance in the STANDBY position, press the timer button (E) .

The display shows the symbol  and the time remaining before switch-on. To set the timer, use the + and - adjustment buttons (B), then wait a few seconds for the programming to

be set. The display returns in stand-by and the symbol  to indicate you have set the timer. When the programmed time has been reached, the appliance turns on with the same settings it had during the previous operation.

Delayed shut-off: With the appliance on, press the timer button (E) . The display shows the symbol  and the time remaining before shut-off.


To set the timer, use the + and - adjustment buttons (B), then wait a few seconds for the programming to be set. The display returns to show the current settings and the symbol  to indicate you have set the timer. When the programmed time has been reached the appliance shuts off automatically. If you want to go back to operation without the timer, press the timer button (E) twice. The timer symbol  disappears from the display.

NOTE: Timer can be set in 30 minutes intervals from 30 minutes to 10 hours, and in one hour increments thereafter.

Using the remote control

The remote control functions correspond to those on the control panel. See the section "Operation and Use" on the previous page for a description of the functions.


NOTE: Before using remote control, you must remove plastic tab from base of remote.

 **Important!** This product contains a button battery. If swallowed, it could cause severe injury or death in just 2 hours. Seek medical attention immediately.

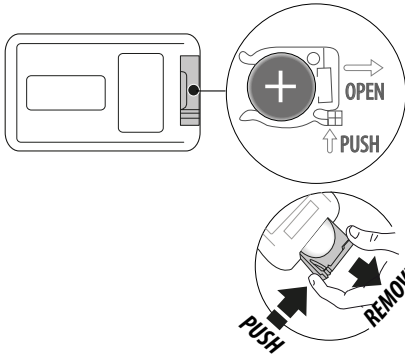
Replacing the remote control battery

- Extract the battery holder on the back of the remote control (see figure below).
- Insert a battery type 3V CR2025 into the holder, making sure the polarity is correct (+ and -), then reinsert the holder into the back of the remote.

The remote control is ready for use.

 **Please note:** If the remote control is disposed of or replaced, the battery must be removed and disposed of in accordance with local recycling regulations as batteries are harmful to the environment.

Do not throw the battery into an open flame as it may explode or release hazardous liquids.



WARNING: CHEMICAL BURN HAZARD. KEEP BATTERIES AWAY FROM CHILDREN



This product contains a lithium button/coin cell battery. If a new or used lithium button/coin cell battery is swallowed or enters the body, it can cause severe internal burns and can lead to death in as little 2 hours. Always completely secure the battery compartment.

If the battery compartment does not close securely, stop using the product, remove the batteries, and keep it away from children. If you think batteries might have swallowed or placed inside any part of the body, seek immediate medical attention. The cells shall be disposed of properly, including keeping them away from children. Even used cells may cause injury.

ADDITIONAL SAFETY FEATURES

- Overheating protection:** a safety device switches the heater off if it accidentally overheats (e.g.: air intake and outlet grilles obstructed). In this case remove the plug from the power outlet and leave it unplugged for a few minutes, eliminate the cause of overheating, then plug the fan heater back and turn it on again. If the appliance doesn't work please contact the De'Longhi Customer Service.
- Tip over safety switch:** a safety tip-over switch turns the heater off if it tips over or is positioned in an improper way that could jeopardize safety. After the appliance has been restored in the vertical position, it will automatically go into STANDBY mode.

i Please note: To avoid overheating the appliance, do not cover it in any way.

TROUBLESHOOTING

In case "PF" is displayed and a warning sound is emitted, there is a fault with the temperature sensor. If the problem persists contact DeLonghi customer service.

If the appliance shuts off unexpectedly:

- Check that the appliance is receiving power.
- Check that the appliance is in the vertical position and on a flat surface, as the safety tip-over switch may have been tripped.
- Check the temperature set and the timer: the appliance may be off because the set temperature has been reached or the time set on the timer has elapsed.

MAINTENANCE

- Before carrying out any maintenance, always unplug from the outlet.
- During the season when the appliance is in use, clean the air intake and outlet grilles regularly using a vacuum cleaner.
- Never use abrasive powders or solvents to clean the appliance.

TECHNICAL CHARACTERISTICS

| | |
|----------------|------------------|
| Supply voltage | See rating label |
| Absorbed power | " |

TROUBLESHOOTING

| PROBLEM | CAUSE | SOLUTION |
|---------------------------------|--------------------------------------------------------------------------------------------------------------------------------------------|----------------------------------------------------------------------------------------------------------------------------------------------------------------------------------------------------------------------------------------------------------------------------------------------------------------------------------------------------------------------------------------------------------------------------------------|
| <i>PF</i> display | Temperature sensor is not working properly | The product needs to be serviced, contact our toll free number for assistance |
| Product doesn't turn on | <p>Check that the plug is connected to the outlet</p> <p>Delayed start timer is ON</p> <p>Room temperature reaches the set temperature</p> | <p>Plug in</p> <p>Wait till set time elapses or press button (E) twice to cancel the delayed start function and push button (A)</p> <p>Use the "+" button to increase the set temperature</p> |
| The appliance shut off | The tip-over switch has been activated | Make sure the appliance is standing upright on a flat surface. If the problem persists, contact our toll free number to assist you |
| The display shows "Ht" blinking | The internal temperature is too high. The air intake or outlet grille is obstructed | <p>Check the appliance is correctly positioned respecting the minimum distances from the wall, or objects, as indicated in the instruction manual. If not, position the appliance correctly</p> <p>Remove the obstruction</p> <p>Disconnect the plug from the outlet and let the appliance cool down. After a few minutes, plug the appliance in again. If the appliance doesn't work please contact the DeLonghi toll free number</p> |

Proudly distributed by
De'Longhi Australia Pty Limited

P.O. BOX 4540

CASULA MALL NSW 2170

Customer Service Ph: 1800 126 659

Fax: 1800 706932

www.delonghi.com.au

e-mail: info.au@delonghigroup.com

De'Longhi New Zealand Limited

99 Khyber Pass Road

Grafton 1023

Auckland, New Zealand

P.O. Box 58-056 Botany

MANUKAU 2163

Customer Service Ph: 0508 200 300

Fax: 0508 200 301

www.delonghi.co.nz

e-mail: info.nz@delonghigroup.com

Register Now



www.delonghi.com/register