
HFS30 Series

FAN HEATER

Instructions for use



DeLonghi

IMPORTANT WARNINGS

Safety warnings



Danger!

Failure to observe the warning may result in life threatening injury by electric shock.

- The appliance must not be placed immediately under a fixed power socket.
- Do not use the appliance near showers, bathtubs, sinks, swimming pools, etc.
- If the power cable is damaged, it must be replaced by the manufacturer, an authorised service centre or a qualified electrician in order to eliminate all risk.



Important!

Failure to observe the warning could result in injury or damage to the appliance.

- This appliance can be used by children aged from 8 years and above and persons with reduced physical, sensory or mental capabilities or lack of experience and knowledge if they have been given supervision or instruction concerning use of the appliance in a safe way and understand the hazards involved. Children shall not play with the appliance. Cleaning and user maintenance shall not be made by children without supervision.
- Children of less than 3 years should be kept away unless continuously supervised.
- Children aged from 3 years and less than 8 years shall only switch on/off the appliance provided that it has been placed or installed in its intended normal operating position and they have been given supervision or

instruction concerning use of the appliance in a safe way and understand the hazards involved. Children aged from 3 years and less than 8 years shall not plug in, regulate and clean the appliance or perform user maintenance.

CAUTION — Some parts of this product can become very hot and cause burns. Particular attention has to be given where children and vulnerable people are present.

- **CAUTION:** To avoid the safety system resetting accidentally, this appliance must not be powered through an external on/off device such as a timer, or connected to a circuit which is turned off and on regularly by the energy supplier.
- **WARNING:** Do not use this heater in small rooms when they are occupied by persons not capable of leaving the room on their own, unless constant supervision is provided.



Danger of burns!!

Failure to observe the warning could result in burns or scalds.

- **WARNING:** To avoid overheating, never under any circumstances cover the appliance during operation as this would lead to a dangerous rise in temperature.
- **WARNING:** To reduce the risk of fire the air intake grille must be kept at a distance of at least 50cm from walls, furniture, fabric or other flammable material while the air outlet grille must be kept at a distance of at least 1m from them.



Safety functions

- **Safety device:** the appliance is fitted with a safety device which switches it off in the event of accidental overheating (e.g. obstruction of air intake and outlet grilles, motor turning slowly or not at all). To reset, unplug the appliance from the mains socket for a few minutes, remove the cause of overheating then plug in again. If the appliance doesn't work please contact the De'Longhi Customer Service.
- **Tip over safety device:** Certain models are fitted with a tip-over switch which turns the appliance off if it falls over. To restart the appliance, simply place it upright again.



Please note:

This symbol indicates recommendations and important information for the user.

- Use this heater on a horizontal and stable surface.
- Always use the appliance in an upright position.
- Do not use this heater if it has been dropped.
- Do not use if there are visible signs of damage to the heater.
- The use of extension leads is not recommended. However if they cannot be avoided, follow the instructions accompanying the extension lead and never exceed the power limit marked on the extension.
- Do not use the appliance near walls, furniture, curtains, etc.
- Do not use the appliance in rooms with a floor area of less than 4m².
- Before putting the appliance away,

make sure it is completely off and unplugged from the mains socket.

Do not store in dusty atmospheres.

- Do not rest anything on the appliance.
- The appliance must not be hung.
- Some models are supplied with a device which delays of few seconds the fan shut off.
- Do not use the appliance to dry laundry. Do not obstruct the air intake and outlet area (danger of overheating).
- For clothes dryers only:
This appliance is intended only for drying textiles washed in water.



Important!

- WARNING - KEEP BATTERIES OUT OF REACH OF CHILDREN.
- Swallowing may lead to serious injury in as little as 2 hours or death, due to chemical burns and potential perforation of the oesophagus.
- Examine devices and make sure the battery compartment is correctly secured. Do not use if compartment is not secure.
- Dispose of used button batteries immediately and safely. Flat batteries can still be dangerous.

Fundamental safety warnings

Dear customer - the plug on the appliance heats up during use. This is completely normal.

This HIGH POWER HEATING APPLIANCE complies with our usual high standards. You should, however, make sure that your power socket is in good condition and that the plug on the appliance is plugged into the socket correctly to

avoid accidental overheating. If the appliance is used for long periods of time, we recommend checking the plug and mains socket regularly. If in doubt, consult an electrician.

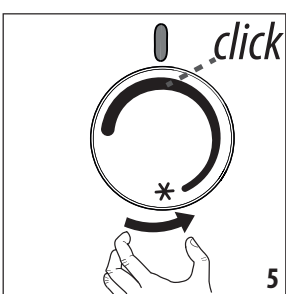
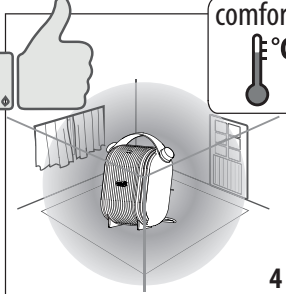
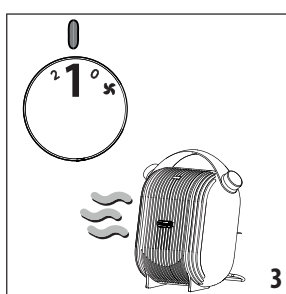
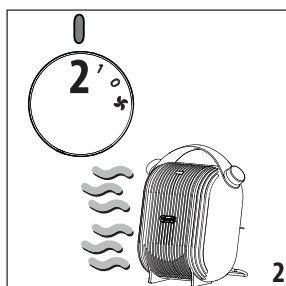
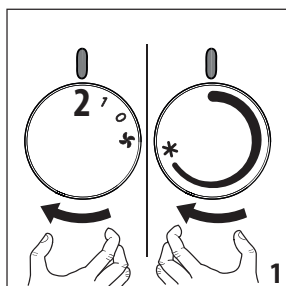
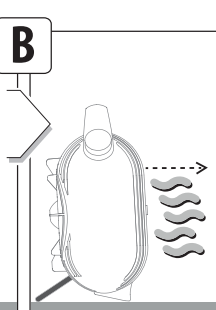
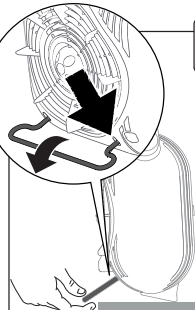
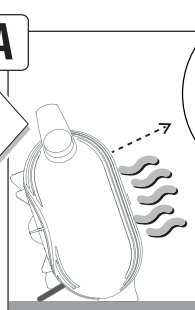
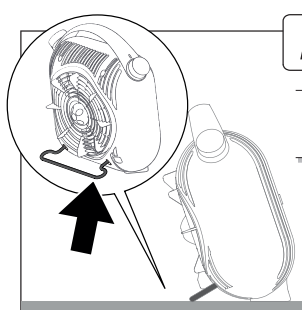
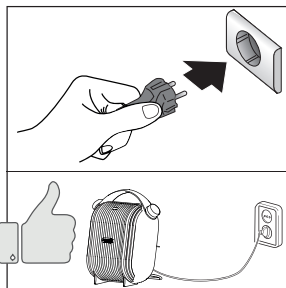
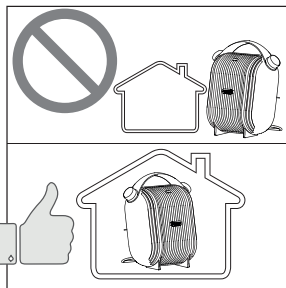
For non-EU countries only:

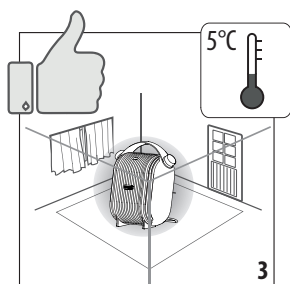
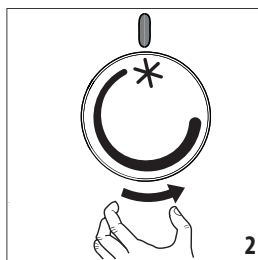
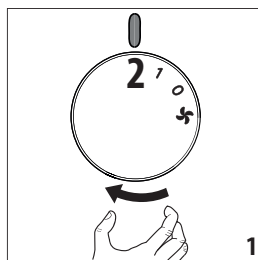
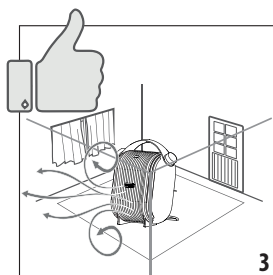
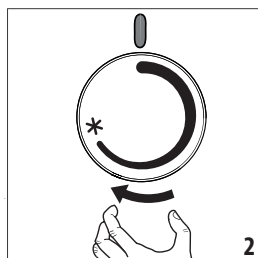
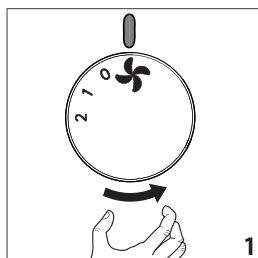
This appliance is not intended for use by persons (including children) with reduced physical, sensory or mental capabilities, or lack of experience and knowledge, unless they have been given supervision or instruction concerning use of the appliance by a person responsible for their safety. Children should be supervised to ensure that they do not play with the appliance.

Disposing of the appliance

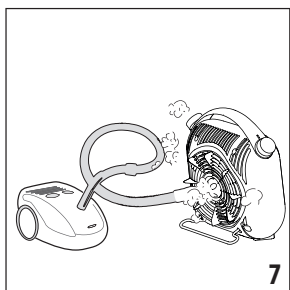
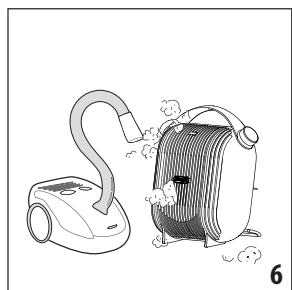
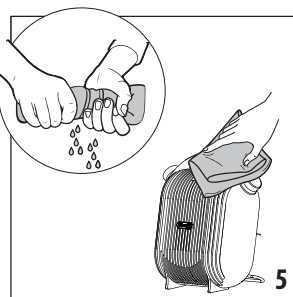
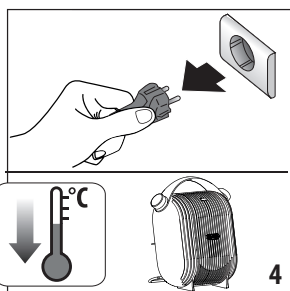
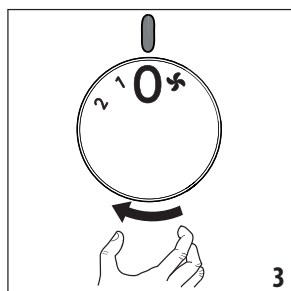
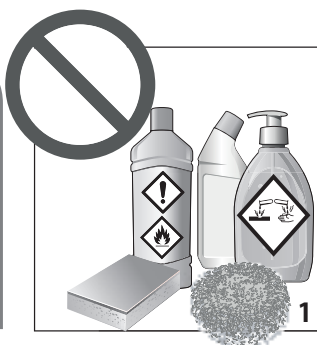


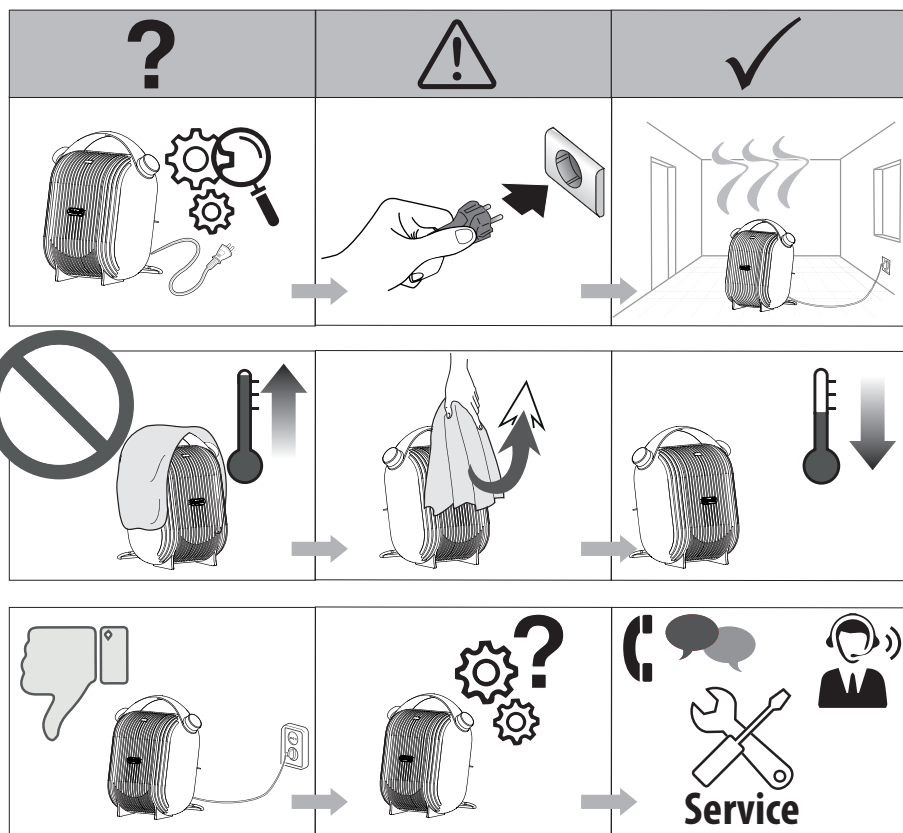
The appliance must not be disposed of with household waste, but taken to an authorised waste separation and recycling centre.






CLEANING





 1,5 Kg

Proudly distributed by
De'Longhi Australia Pty Limited

P.O. BOX 4540
CASULA MALL NSW 2170
Customer Service Ph: 1800 126 659
Fax: 1800 706932
www.delonghi.com.au
e-mail: info.au@delonghigroup.com

De'Longhi New Zealand Limited

99 Khyber Pass Road
Grafton 1023
Auckland, New Zealand
P.O. Box 58-056 Botany
MANUKAU 2163
Customer Service Ph: 0508 200 300
Fax: 0508 200 301
www.delonghi.co.nz
e-mail: info.nz@delonghigroup.com

Register Now 
www.delonghi.com/register