

## INTRODUCTION

Thank you for choosing a De'Longhi product.  
Please take a few minutes to read these instructions.  
This will avoid all risks and damage to the appliance.

### Symbols used in these instructions

Important warnings are identified by the symbols below.  
It is important to respect the warnings.  
Failure to respect the warnings could lead to electric shock,  
serious injury, burns, fire or damage to the appliance.



#### **Danger!**

Failure to observe the warning may result in life threatening injury by electric shock.



#### **Important!**

Failure to observe the warning could result in injury or damage to the appliance.



#### **Danger of burns!!**

Failure to observe the warning could result in burns or scalds.



#### **Please note:**

This symbol indicates recommendations and important information for the user.

## IMPORTANT SAFEGUARDS

When using any electrical appliance, some basic safety precautions should always be observed to reduce the risk of fire, electric shock, and/or injury to persons. Read all instructions carefully before using the appliance. Specifically:



#### **Danger!**

- Do not operate any heater with a damaged cord or plug or after the heater malfunctions, has been dropped or damaged in any manner. If heater has leaked any oil, discontinue using the heater and contact the service center as indicated in the instruction leaflet. Return heater to authorized service facility for examination, electrical or mechanical adjustment, or repair.
- This heater is not intended for use in bathrooms, laundry areas and similar indoor locations. Never locate heater where it may

fall into a bathtub or other water container.

- Do not insert or allow foreign objects to enter any ventilation or exhaust opening as this may cause an electric shock, fire, or damage the heater.
- Use this heater only as described in this manual. Any other use not recommended by the manufacturer may cause fire, electric shock, or injury to persons.



#### **Important!**

- If your radiator is equipped with a polythene tape used as carry handle, remove it before connecting appliance to the outlet.
- Extreme caution is necessary when any heater is used by or near children or invalids and whenever the heater is left operating and unattended.
- Check that neither the appliance nor the power cable have been damaged in any way during transportation.
- Do not use outdoors. Household use only.
- Do not run cord under carpeting. Do not cover cord with throw rugs, runners, or similar coverings. Do not route cord under furniture or appliances. Arrange cord away from traffic area and where it will not be tripped over.
- Be sure that the plug is fully inserted into an appropriate outlet. Please remember that outlets also deteriorate due to aging and continuous use: check periodically if signs overheating or deformations are evidenced by the plug. Do not use the outlet and CALL your electrician.
- Make sure that no pieces of polystyrene or other packaging material have been left between one element of the appliance and another. It may be necessary to pass over the appliance with a vacuum cleaner.



#### **Danger of burns!!**

- This heater is hot when in use. To avoid burns, do not let bare skin touch hot surfaces. Use handle when moving this heater. Keep com-

bustible materials, such as furniture, pillows, bedding, papers, clothes, and curtains at least 3 feet (0,9 m) from the front and top of the heater and keep them away from the sides and rear.

- To prevent a possible fire, do not block air intakes or exhaust in any manner. Do not use on soft surfaces, like a bed, where openings may become blocked.
- A heater has hot and arcing or sparking parts inside. Do not use in areas where gasoline, paint, or flammable liquids are used or stored.
- To prevent overload and blown fuses, be sure that no other appliance is plugged into the same outlet (receptacle) or into another outlet (receptacle) wired into the same circuit.
- It is normal for the heater's plug and cord to feel warm to the touch. A plug or cord which becomes hot to the touch or becomes distorted in shape may be a result of a worn electrical outlet. Worn outlets or receptacles should be replaced prior to further use of the heater. Plugging heater into a worn outlet /receptacle/ may result in overheating of the power cord or fire.
- Do not cover the appliance while it is functioning in order to avoid overheating with the attendant risk of fire.

**i Please note:**

- Always unplug heater when not in use.
- To disconnect heater, turn controls to off, then remove plug from outlet.
- Connect to properly polarized outlets only.
- Always plug heaters directly into a wall outlet/receptacle. Never use with an extension cord or relocatable power tap (outlet/power strip).
- When switching on the appliance for the first time, allow it to run at full power for about two hours to get rid of the unpleasant smell. Make sure that the room in which the appliance is located is well ventilated during this operation. It is normal for the appliance

to emit small cracking sounds when you turn it on for the first time.

## SAVE THESE INSTRUCTIONS

### THIS PRODUCT IS FOR HOUSEHOLD USE ONLY

#### DESCRIPTION

(see fig. 1)

- A** Thermostat
- B** Switches
- C** Cord holder

#### USE

##### Fitting the wheels

Remove the feet and the wheels from the polystyrene packing. Turn the radiator upside-down on a rug or a soft surface in order to prevent damaging the paint finish.

- Fit the wheels to the spindles on the feet and push firmly until they click into position. Pull each wheel to check that it is correctly inserted.
- The feet with the casters must be fitted with two arc-shaped brackets and fit them using the threaded bar and wing nut provided, only between the 1st and 2nd element and the second to last (see fig. 1 to 3 inclusive).

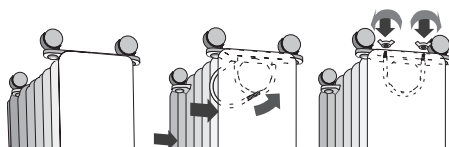


Fig. 1

Fig. 2

Fig. 3

##### Models with "easy wheel" system

Turn the radiator upside-down on a rug or a soft surface in order to prevent damaging the paint finish. Fully unfold the castors by turning them outwards (Fig. 4).

Turn the radiator back to its upright position.

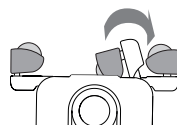


Fig. 4

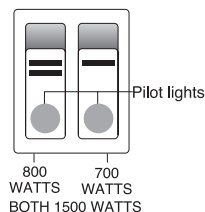
- i Please note:** Always operate the heater in upright position only (wheels on the bottom, controls on top). Any other position could create hazardous situation.

## Watts economizer

For more economical use, the Min. or Med. Watt switches may be used individually, after unit has reached the operating temperature.

With pilot lights ON, the heater is ON.

ON/OFF Switches



### 1. Location

Place heater on the floor beneath the coldest window in the room, or any other location. Your heater will reduce the effect of cold drafts. The heater should not be placed immediately below a power outlet.

Do not use this radiator in rooms with a floor area of less than 43 square feet (4 sq. m.).

### 2. Connection

The radiator should be connected to a properly polarized A/C 120 V household outlet in perfect working conditions.

Keep loose clothing or bedding, furniture and flammable material away from the heater's wall outlet.

### 3. Turning on two-switch models

Turn the thermostat clockwise to its maximum position. Push down both switches. The switch lights stay on independently of the thermostat cycling. When room reaches the desired temperature, turn the thermostat knob counter-clockwise very slowly and carefully until you hear a click. This should set your heater to maintain the desired temperature by cycling on and off as required.

**Please note:** The heater normally requires about 15 minutes to reach the desired temperature.

### 4. Use of thermostat

The thermostat operates according to room air temperature, rather than radiator temperature.

Turning it counter-clockwise to smaller numbers would decrease the temperature; clockwise to greater numbers would increase the temperature.

## Antifreeze function

Turn the thermostat dial to the ❄ position and push the switches on.

The appliance will maintain a minimum room temperature of approximately 42°F (5°C), thus preventing freezing while conserving energy.

**Please note:** To completely shut the heater off, MIN/MED switches must be set in the "0" position.

**Your product is equipped with a polarized alternating current line plug (a plug having one blade wider than the other). There is only one way it can be plugged into a power supply. This is a safety feature. If you are unable to insert the plug fully into the outlet, try again by turning it the other way. If it would still not go in, it is probably due to an obsolete outlet which should be replaced. Do not temper with the plug or outlet to defeat the purpose of this safety mechanism.**

## A safety device

A safety device switches the heater off in the event of overheating. To restart the heater, call the nearest Service center.

## 5. MAINTENANCE AND SERVICE

Always unplug the heater from the power outlet and allow the radiator to cool. Wipe radiator with a soft damp cloth; do not use detergents and abrasives. Should the radiator not be in use over a certain length of time, roll the cable around the holder and store it in a dry place (see fig. on front page).

This appliance has been built to last for many years of trouble-free service. In case of malfunction or doubt, do not try to repair the heater by yourself: this might increase the risk of fire and electric shock. Call nearest Service Center Visit [www.delonghi.com](http://www.delonghi.com) for a completelist of Service Centers (U.S. Only).

## LIMITED WARRANTY

---

**This warranty applies to all products with De'Longhi or Kenwood brand names.**

### **What does the warranty cover?**

We warrant each appliance to be free from defects in material and workmanship. Our obligation under this warranty is limited to repair at our factory or authorized service center of any defective parts or part thereof, other than parts damaged in transit. In the event of a products replacement or return, the unit must be returned transportation prepaid. The repaired or replacement model will be returned at the company expense.

This warranty shall apply only if the appliance is used in accordance with the factory directions, which accompany it, and on an Alternating current ( AC ) circuit.

### **How long does the coverage last?**

This warranty runs for one year (1) from the purchase date found on your receipt and applies only to the original purchaser for use.

### **What is not covered by the warranty?**

The warranty does not cover defects or damage of the appliance, which result from repairs or alterations to the appliance outside our factory or authorized service centers, nor shall it apply to any appliance, which has been subject to abuse, misuse, negligence or accidents. Also, consequential and incidental damage resulting from the use of this product or arising out of any breach of contract or breach of this warranty are not recoverable under this warranty. Some states do not allow the exclusion or limitation of incidental or consequential damage, so the above limitation may not apply to you.

### **How do you get service?**

If repairs become necessary, see contact information below:

**U.S. Residents:** Please contact our toll free hotline at 1-800-322-3848 or log onto our website at [www.delonghi.com](http://www.delonghi.com)

**Residents of Canada:** Please contact our toll free hotline at 1-888-335-6644 or log onto our website at [www.delonghi.com](http://www.delonghi.com)

**Residents of Mexico:** Please contact our toll free number 01-800-711-8805 for assistance or log onto our website at [www.delonghi.com](http://www.delonghi.com)

The above warranty is in lieu of all other express warranties and representations. All implied warranties are limited to the applicable warranty period set forth above. This limitation does not apply if you enter into an extended warranty with De'Longhi. Some states/countries do not allow limitations on how long an implied warranty lasts, so the above exclusions may not apply to you. De'Longhi does not authorize any other person or company to assume for it any liability in connection with the sale or use of its appliance.

### **How does country law apply?**

This warranty gives you specific legal rights, and you may also have other rights, which vary from state to state/country to country.