

# Important safeguard

- Use this appliance only as described in this instruction manual.

As with any electrical appliance, the instructions aim to cover as many situations as possible. Caution and common sense should be used when operating and installing this air conditioner.

- This appliance has been manufactured to cool and dehumidify domestic environments and must not be used for other purposes.
- It is dangerous to alter or modify the unit's characteristics in any way.
- The appliance must be installed in accordance with the relevant national legislation.
- Should repairs be necessary, contact the nearest authorized Repair Service Center. Unauthorized servicing can be dangerous.
- The appliance is not intended for use by persons (including children) with reduced physical, sensory or mental capabilities, or lack of experience and knowledge, unless they have been given supervision or instruction concerning use of the appliance by a person responsible for their safety.

Children should be supervised to ensure that they do not play with the appliance.

- If the power cable is damaged, it must be replaced by the manufacturer or an authorized technical service centre in order to avoid all risk.
- Always ensure the appliance is plugged into a grounded 3-prong outlet. If you have any doubts check with a qualified electrician.
- Do not use extension cables.
- Before cleaning or maintenance operations, always unplug the unit from the outlet.
- Do not pull on or place strain on the power cord when moving the appliance.
- The appliance should not be installed where the atmosphere may contain combustible gases, oil or sulphur, or near heat sources.

- Do not rest hot or heavy objects on the appliance.
- Clean the filters at least once a week.
- Avoid using heaters near the unit.
- The unit should be transported in a vertical position. If this is not possible secure the unit at an angle, do not lie it horizontally.
- Before transporting the unit, drain the unit. After transportation, wait at least 6 hours before switching the unit on.
- The packaging materials can be recycled. You are therefore recommended to place them in the special containers for differentiated waste collection.
- This appliance is fitted with a special safety device. When the compressor switches off, this device prevents it from switching on again for at least 3 minutes.
- **WARNING:** Changes or modifications not expressly approved by the party responsible for compliance could void the user's authority to operate the equipment.

## Specific warnings for appliances with R410A refrigerant gas

R410A is a refrigerant that complies with European ecological standards; nevertheless, it is recommended not to pierce the cooling circuit of the machine. At the end of its useful life, deliver the appliance to a special waste collection centre for disposal. This hermetically sealed system contains fluorinated greenhouse gases.

## ENVIRONMENTAL INFORMATION:

This unit contains fluorinated greenhouse gases covered by the Kyoto Protocol.

Maintenance and disposal must be carried out by qualified personnel only (R410A, GWP=2088).

## Save these instructions

This product is for household only

## INTRODUCTION

Thank you for choosing a De'Longhi product. Please take a few moments to read the instructions to avoid risks or damage to the appliance.

## DESCRIPTION

**Description of the appliance (see page 3 - A)**

- A1** air outlet flap
- A2** control panel
- A3** handles
- A4** castor wheels
- A5** BioSilver filter
- A6** air intake grille
- A7** air exhaust hose housing
- A8** air intake grille
- A9** power cable
- A10** drainage hose with cap
- A11** CST remote control compartment

**Descrizione dei accessori (see page 3 - B)**

- B1** adapter for window bracket
- B2** air exhaust hose
- B3** hose adaptor
- B4** additional window bracket
- B5** window bracket with wing nut
- B6** window bracket cap
- B7** CST (Cool Surround Technology) remote control
- B8** end of season accessories bag (not on all models)
- B9** end of season dust cover (not on all models)
- B10** stripping foam (not on all models)

## ELECTRICAL CONNECTION

Before plugging the appliance into the outlet, check that:

- The outlet's power supply corresponds to the value indicated on the rating label on the back of the appliance.
- The outlet and electrical circuit are adequate for the appliance.
- The outlet is a 3-hole grounded outlet (⚡). If this is not the case, you must choose another outlet. Failure to follow these important safety instructions absolves the manufacturer of all liability.

**If it becomes necessary, the power cable must be replaced by a qualified professional only.**

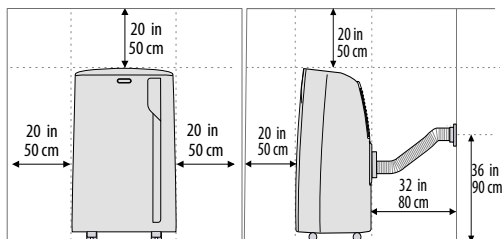
## USE

The instructions below will enable you to prepare your air conditioner for operation as efficiently as possible. Before use, make sure the air intake and air outlet flap are unobstructed.

**Please note:** This appliance is provided with an auto-evaporation feature for condensate removal during cooling and dehumidifying modes.

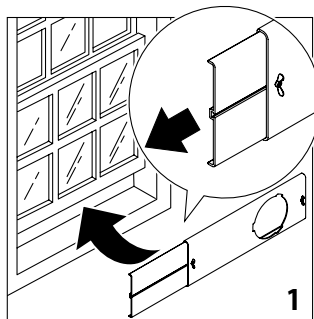
## AIR CONDITIONING INSTALLATION

**For optimal results see the figures below for the suggested minium distances.**

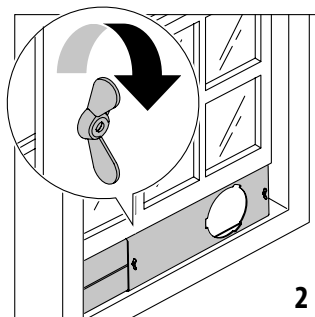


## DOUBLE-HUNG WINDOW

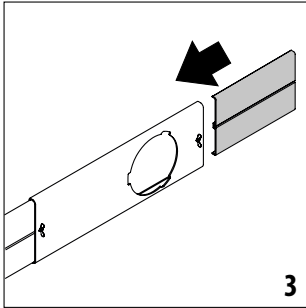
- Place the window bracket (B5) in the window sill, extend the bracket fully within the window frame (fig. 1).



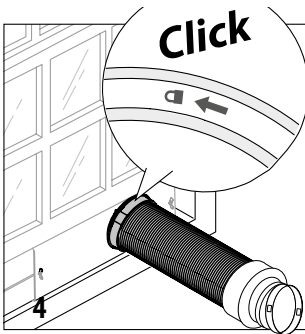
- Fix the bracket by the wing nut (fig. 2). Attach the provided stripping foam (B10) to the top of the window bracket and then lower the window onto the bracket. (Should the window bracket be too large for the window the plastic can be cut with a saw by a qualified professional).



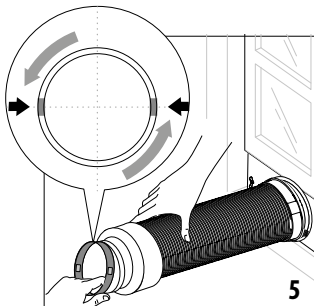
- If the windows are large, use additional window bracket (B4) to cover your window aperture, extending it to the required length, then blocking it with the locking wing nut supplied (fig.3).



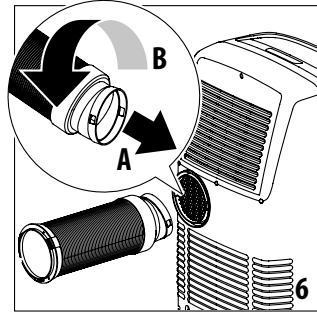
- Insert and lock the accessory for window bracket (B1) already assembled to the air exhaust hose, into the slot of the window bracket (fig. 4).



- In order to facilitate the fitting of the air exhaust hose (B2) in the relevant housing located on the rear side of the appliance, position the hose adapter's tabs (B3) in an horizontal axis as shown in fig. 5.



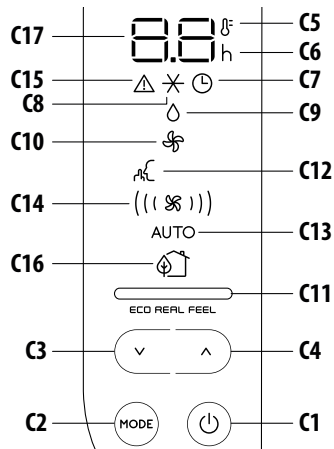
- Fit the air exhaust hose (B2) in the relevant housing located on the rear side of the appliance (fig. 6).



### SLIDING WINDOWS

- Thanks to the locking wing nut, it's possible to use the window bracket also for sliding windows. Position the hole of the bracket so to allow a correct installation of the exhaust hose.

### OPERATING FROM THE CONTROL PANEL

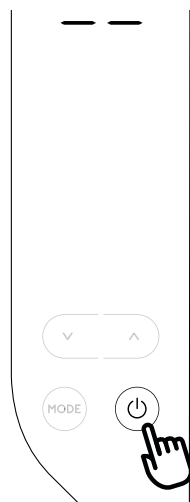


### DESCRIPTION OF THE CONTROL PANEL (C)

- C1 ON/STAND-BY (on/off) key
- C2 Function selection key MODE (air conditioning, dehumidifying, fan)
- C3 Decrease key
- C4 Increase key
- C5 Temperature indicator
- C6 Timer indicator
- C7 Timer symbol
- C8 Air conditioning symbol
- C9 Dehumidifying symbol

- C10** Fan symbol
- C11** ECO REAL FEEL indicator
- C12** Arctic Whisper symbol
- C13** Auto indicator
- C14** Air flow indicators
- C15** Alarm symbol
- C16** ECO REAL FEEL symbol
- C17** Set temperature values, programmed on/off time

## TURNING THE APPLIANCE ON/OFF



Before plugging the appliance check the cap on back of the unit is correctly inserted on drainage hose (A10). Insert the plug in the socket.

Two dashes appear on the display indicating that the appliance is in stand-by.

Touch the ON/STAND-BY (C1) key to turn on the appliance.

When the appliance comes on, the last function set before it was shut off is activated.

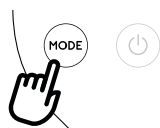
**Please note:** After few seconds of the control panel inactivity, its brightness will be automatically reduced and in the next few minutes it will be further reduced.

To turn the appliance off, touch the

(C1) key again.

**Please note:** Never turn off the air conditioner by simply pulling the plug. Touch the (C1) key in order to put your air conditioner in stand-by and wait a few minutes before pulling the plug. In this way, the appliance can perform the operating status checks.

## MODES SELECTION



To select the desired operating mode, touch repeatedly the MODE key (C2) until the desired function is selected.

## AIR CONDITIONING MODE



This is ideal for hot and humid weather when the room needs to be both cooled and dehumidified. This function also helps dehumidify the air. To correctly set this mode:

- Touch repeatedly the MODE key (C2) until the air conditioning symbol appears. The display will show the desired temperature

and the Auto fan speed.

- To change the temperature to be reached, touch the (C3) or (C4) key.

**Please note:** The most suitable temperatures, during the summer range from 75 to 81°F. However, setting the temperature significantly lower than the outdoor temperature is not recommended.

In conditioning mode, the air flow can be selected only from the remote control.

## DEHUMIDIFYING MODE



This is ideal for reducing humidity in the room (spring and autumn, damp rooms, rainy periods, etc). For this type of use, the appliance must be set up as for air conditioning mode. That is, the air exhaust hose (B2)

must be fitted to the appliance to allow the humidity to be discharged outside.

To correctly set this mode:

- Touch repeatedly the MODE key (C2) until the dehumidifying symbol appears.
- The appliance automatically chooses the best air flow.

## FAN MODE



When using this mode, the air exhaust hose (B2) does not need to be attached to the appliance.

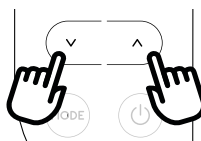
To correctly set this mode:

- Touch repeatedly the MODE key (C2) until the fan symbol appears.
- Select the desired air flow by touching the decrease (C3) or increase (C4) key.

The air flows available are:

- ( ) **Minimum air flow:** when most silent operation is desired.
- ( ( ) ) **Medium air flow:** when the noise level needs to be low but with a good comfort level.
- (( ( )) ) **Maximum air flow:** for maximum performance.

## SELECT THE TEMPERATURE SCALE



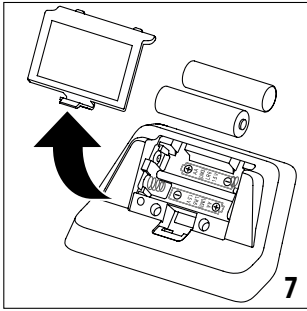
The temperature can be displayed in °C or °F. To change the temperature unit of measure touch both the decrease/increase (C3) and (C4) keys for about 10 sec.

## OPERATING FROM THE CST (Cool Surround Technology) REMOTE CONTROL

The CST remote controller is based on Bluetooth® Low Energy communication with the Pinguino.

### INSERTING OR REPLACING THE BATTERIES

- Remove the cover on the rear of the remote control.
- Insert or replace the batteries with two new LR6 "AA" 1,5V batteries, inserting them correctly (see the instructions inside the battery compartment) (fig. 7).
- Replace the cover.

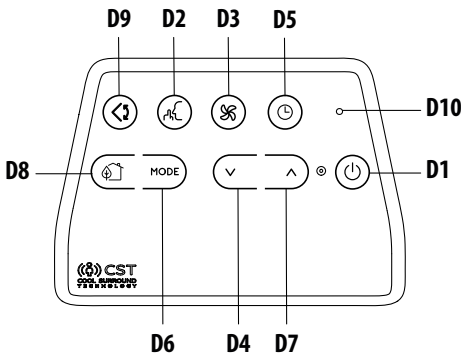


If the remote control unit is replaced or discarded, the batteries must be removed and disposed of in accordance with current legislation as they are harmful to the environment.

Do not mix old and new batteries.

Do not mix alkaline, standard (carbon-zinc) or rechargeable (nickel-cadmium) batteries. Do not dispose of batteries in fire. Batteries may explode or leak. If the remote control is not used for a certain length of time, remove the batteries. Use only battery within the expired date.

### DESCRIPTION OF THE CST REMOTE CONTROL

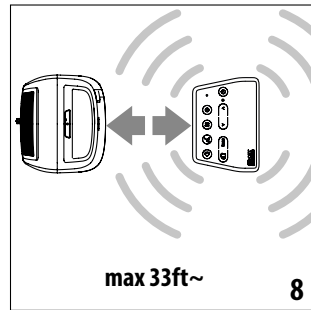


- D1 ON/STAND-BY (on/off) button
- D2 Artic Whisper button
- D3 Air flow button
- D4 Decrease button
- D5 Timer button
- D6 MODE button
- D7 Increase button
- D8 ECO REAL FEEL button
- D9 Swing button (flap swing)
- D10 Indication LED

### USING THE CST REMOTE CONTROL

The CST remote control senses temperature and humidity like a thermostat for a personalized custom cool around you. By keeping the CST remote nearby, it will track humidity and temperature around you making sure you'll always enjoy your desired comfort.

- The remote control must be no more than about 33 ft (10 meters) away from the appliance (fig. 8) (even in non line of sight). The maximum range may be lower depending on the environment. It belongs to Bluetooth class 2 device class.



- The CST remote control must be handled with care. Do not drop it or expose it to direct sunlight or sources of heat. It is advisable to keep the CST remote control placed on a table or a flat surface.

Do not hold the CST remote control in your hand for long time to avoid altering the reading of the sensors.



The CST sensors are also disabled if the CST remote control is positioned at a distance less than 3.3 ft (1 meter) from the unit.

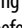
- The CST remote control is equipped with touch sensitive buttons.
- The CST remote control is equipped with a double color built-in LED (D10) (white/red). White indications are used for:
  - signaling the touching of each button with 3 fast flashes
  - every 30 seconds it blinks for data transmission
  - signaling the entering of pairing phase with periodic blinking
  - signaling the batteries good status

- The same indications but in red color mean that the batteries begin to be exhausted.

**Please note:** The remote control can be safely stored in the appropriate compartment (A11).

### TURNING THE APPLIANCE ON/OFF



- Plug into the outlet.
- Touch the  ON/STAND-BY button (D1). When turned on, the air conditioner starts operating in the same mode as when it was turned off.
- Touch the  ON/STAND-BY button (D1) again to switch the appliance off.

**Please note:** Never switch the appliance off by removing the plug. Always switch it off by touching the  ON/STAND-BY button (D1) and waiting few minutes before removing the plug. Only in this way the appliance will perform the standard checkings.

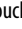
### SELECTING THE OPERATING MODES

The operating modes available on the CST remote control through the MODE button (D6) correspond to those on the appliance control panel (C).

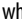
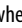

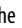
### SELECTING THE TEMPERATURES

In conditioning mode touch  button (D4) or  (D7) to select the desired temperature.

### SELECTING THE AIR FLOW


In conditioning and fan modes, touch  button (D3) to select the desired air flow.

The air flows available are:

- (  ) **Minimum air flow:** when room has cooled down and you want a quieter operation.
- ((  )) **Medium air flow:** when the noise level needs to be low but with a good comfort level.
- (( (  ) )) **Maximum air flow:** for maximum performance.
- (( (  ) )) **Auto air flow:** the appliance automatically chooses the air flow based on the temperature selected and the environmental conditions. This selection is only available in conditioning mode.

### ECO REAL FEEL FUNCTION

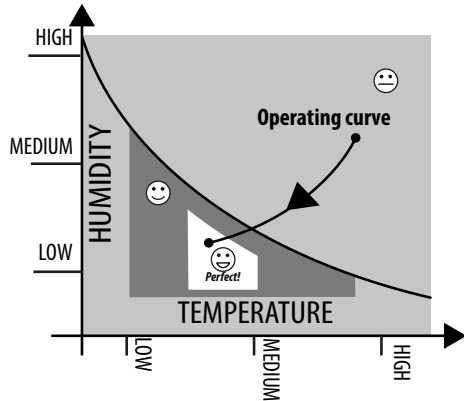
ECO REAL FEEL is the innovative De'Longhi technology that works simultaneously on temperature reduction and humidity control, securing best comfort level. With traditional systems, during working time, optimal comfort conditions may be reached but not secured over time. With ECO REAL FEEL, once optimal comfort is reached, PAC automatically modulates compressor action and air flow, to keep it over time which can save up to 30% on energy usage.


To activate the function, touch the  button (D8) on remote control and the ECO REAL FEEL symbol appears.


After approx. 1 minute, the ECO REAL FEEL indicator (C11) turns on. It changes color when approaching the best comfort level

(see following diagram).

**Please note:** For this type of use, the appliance must be set up as for air conditioning mode.



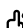
 **ORANGE LIGHT:** Room conditions far from optimal level.

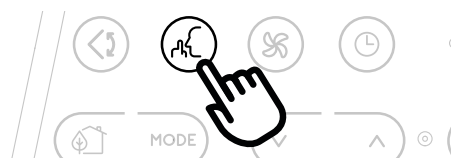
 **GREEN LIGHT:** Most people feel good room conditions, near optimal level.

 **BLUE LIGHT:** Best comfort level.  
*Perfect!*

- The well-being feeling is a subjective condition: for this reason, different people may judge differently the same environmental conditions.
- In particularly severe environmental conditions (large size of the environment, high temperature or humidity outside, poor insulation of the room, too many of people or strong heat load in the room, strong exposure to the sun ...) this device may not be able to reach the best comfort level.

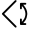
### ARCTIC WHISPER (available in conditioning mode only)

By activating this function, the operating noise is further reduced. To activate it, touch on the remote control the  button (D2). The display shows the relative symbol (C12).



## SWING FUNCTION

This function moves the flap evenly distributing the air into the room.

When the  Swing button (D9) is touched, the flap will begin to move forwards and backwards alternatively.

If touched again, the flap will be locked into its current position. When the button is next touched, the flap will start to move forwards and backwards again.

**Please note:** in order to avoid damaging the internal mechanisms, the flap must not be moved manually.

## REPEAT PAIRING OF CST REMOTE CONTROL

The CST remote control is already paired to the bundled Pinguino appliance. In case the user wants to perform a pairing with another Pinguino device, or in case of a pairing of brand new CST remote control, the user needs to put the unit in Stand-by mode and keep touched for 10 sec the MODE selection button (D6) on the CST remote control. The Led (D10) starts blinking periodically indicating the pairing phase.

The user is then asked to press for 10 sec the MODE button (C2) on the Pinguino unit until a double beep is emitted. The pairing phase is signaled on display by means of a fast flashing of the dot in the middle of the digits.

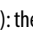
When the two devices complete the pairing dialogue, the PAC emits a double 'beep', the display will show the normal visualization for Standby.

The pairing must be done within 60 sec.



## SETTING THE TIMER

The timer allows the delayed start up or shut down of the appliance. This function will prevent wasting electricity by optimising the operating periods.

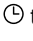
### How to program delayed shut down

- While the appliance is on in any operating mode, delayed shut down can be programmed.
- Touch the  timer button (D5): the timer symbol (C7) and hours (C6) light up.




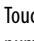
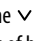
- Touch the  (D4) and  (D7) buttons until the desired numbers of hours to shut down appears on the display.

A few seconds after the timer is set, the setting is acquired, the display shows the operating mode and the timer symbol stays lit. Once the set time is elapsed, the air conditioner goes into standby.

To cancel the timer program, touch the  timer button (D5) twice. The timer symbol (C7) will go off.

**Please note:** Once the timer has been activated, by touching the timer button only one time, the remaining hours to shut down will be displayed.

### How to program delayed start up

- Plug in the appliance and set to standby.
- Touch the  timer button (D5): the timer symbol (C7) and hours (C6) light up.
- Touch the  (D4) and  (D7) buttons until the desired numbers of hours to start up appears. Start up can be programmed at any time within the 24 hours that follow.

When the set time is elapsed, the appliance will start to operate in the same operating mode that was previously set.

To cancel the timer program, touch the timer button (D5) twice. The timer symbol (C7) will go off.

**Please note:** Once the timer has been activated, by touching the timer key only one time, the remaining hours to the start up will be displayed.

## FCC AND CANADA EMC COMPLIANCE INFORMATION

This device complies with Part 15 of the FCC Rules. Operation is subject to the following two conditions:

- (1) This device may not cause harmful interference, and
- (2) This device must accept any interference received, including interference that may cause undesired operation.

**Please note:** This equipment has been tested and found to comply with the limits for a Class B digital device, pursuant to part 15 of the FCC Rules. These limits are designed to provide reasonable protection against harmful interference in a residential installation. This equipment generates, uses and can radiate radio frequency energy and, if not installed and used in accordance with the instructions, may cause harmful interference to radio communications. However, there is no guarantee that interference will not occur in a particular installation. If this equipment does cause harmful interference to radio or television reception, which can be determined by turning the equipment off and on, the user is encouraged to try to correct the interference by one or more of the following measures:

- Reorient or relocate the receiving antenna.
- Increase the separation between the equipment and receiver.
- Connect the equipment into an outlet on a circuit different from that to which the receiver is connected.
- Consult the dealer or an experienced radio/TV technician for help.

Approved under the certification provision of FCC Part 15 as a Class B Digital Device.

Caution: Changes or modifications not expressly approved by the manufacturer could void the user's authority to operate this

device.

Caution: To comply with the limits of the Class B digital device, pursuant to Part 15 of the FCC Rules, this device is to comply with Class B limits. All peripherals must be shielded and grounded. Operation with non-certified peripherals or non shielded cables may result in interference to radio or reception.

This Class B digital apparatus complies with Canadian ICES-003. CAN ICES-3 (B)/NMB-3(B)

### WIRELESS TRANSMITTER COMPLIANCE INFORMATION

The term "IC:" before the radio certification number only signifies that Industry Canada technical specifications were met.

This device complies with Industry Canada's licence-exempt RSSs. Operation is subject to the following two conditions:

- (1) This device may not cause interference; and
- (2) This device must accept any interference, including interference that may cause undesired operation of the device.

This equipment complies with FCC and IC radiation exposure limits set forth for an uncontrolled environment. This equipment should be installed and operated with minimum distance 20cm between the appliance and your body. This transmitter must not be co-located or operating in conjunction with any other antenna or transmitter.

### FCC/IC RADIATION EXPOSURE STATEMENT

This equipment complies with FCC/IC RSS-102 radiation exposure limits set forth for an uncontrolled environment.

This equipment should be installed and operated with minimum distance 20cm between the radiator & your body.

### Host device Labeling

This device includes the following module.

Contains FCC ID: WAP-2011

### Host device Labeling

This device includes the following module.

Contains IC: 7922A-2011

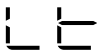



### USAGE TIPS

- The CST remote control has humidity/temperature sensors on board. It is suggested not to completely cover it with hands or clothes; it is as well suggested not to place in obstructed air flow zones. In addition to that it is preferable to keep the device far from direct sunlight exposure or heat sources in order to avoid miss sensor readings.
- The CST remote control is equipped with touch sensitive buttons. It is suggested to use it with clean hands and without dust or liquids/humidity over it.
- The CST Remote control is expected to run for approx. 6 months with the same battery pack. This assumption is based on the use of 2300 mAh LR6 "AA" batteries.

## SELF-DIAGNOSIS

The appliance has a self diagnosis system to identify a number of warning/malfunctions.

Error messages are displayed on the appliance display.

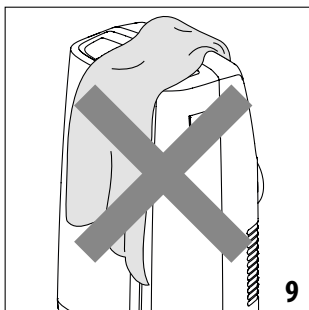
IF ... IS DISPLAYED,	IF ... IS DISPLAYED,	IF ... IS DISPLAYED,	IF ... IS DISPLAYED,
			
"Low Temperature" (Frost prevention)	"Probe Failure" (Probe damaged)	"High Level" (Internal tray full)	"Communication Failure" (Internal communication issue)
<b>..WHAT SHOULD I DO?</b>	<b>..WHAT SHOULD I DO?</b>	<b>..WHAT SHOULD I DO?</b>	<b>..WHAT SHOULD I DO?</b>
The appliance is fitted with a frost protection device to avoid excessive formation of ice. The appliance starts up again automatically when the defrosting process is completed.	If this is displayed, contact your local authorized service center	Empty the internal safety tank following the instructions in the section "End of season operations"	If this is displayed, contact your local authorized service center.



## TIPS FOR CORRECT USE


To ensure optimal results from your air conditioner, follow these recommendations:

- Close the windows and doors where air conditioner will be used. When installing the air conditioner semi-permanently, you should leave a door slightly open (as little as 0,39 inches - 1 cm) to guarantee proper ventilation.
- Never use the appliance in very damp rooms (laundries for example).
- Protect the room from direct exposure to the sun by partially closing curtains and/or blinds to make the appliance much more economical to run.
- Never use the appliance outdoors.
- Make sure there are no heat sources in the room.
- Make sure the air conditioner is standing on a level surface.
- Never rest objects of any kind on the air conditioner.
- Never obstruct the air intake or air outlet flap (fig. 9).



*do not cover the appliance*

## CLEANING

Before cleaning or maintenance, turn the appliance off by touching the  button, then unplug from the outlet.

### CLEANING THE CABINET

You should clean the appliance with a slightly damp cloth then dry with a dry cloth. For safety reasons, never wash the air conditioner with water.

**Attention!** Never use petrol, alcohol or solvents to clean the appliance. Never spray insecticide liquids or similar.

### CLEANING THE BIO SILVER AIR FILTER

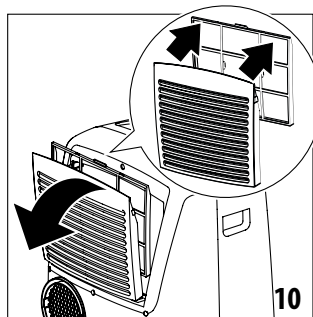
The BioSilver filter helps capture dust and pollen and helps reduce the growth of bacteria and mold on the filter.

If the filter is dirty, air circulation is compromised and the efficiency of the appliance decreases. It is therefore good practice to clean the filter at regular intervals. The frequency depends on the duration and conditions of operation. If the unit is used constantly or systematically, you are recommended to clean the

filter once a week.

The filter is housed in the intake grille.

To clean the filter, extract as shown in fig. 10.



Use a vacuum cleaner to remove the dust collected on the filter. If it is very dirty, immerse in warm water and rinse a number of times. The water should never be hotter than 104°F. After washing the filter, allow it to dry completely before repositioning it.

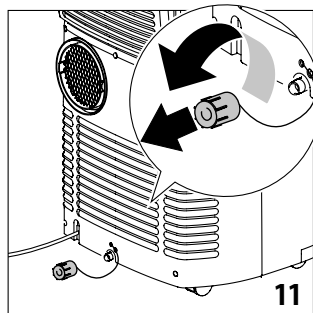
## START OF SEASON CHECKS

Make sure the power cable and plug are undamaged and the earth system is efficient.

Follow the installation instructions precisely.

## END OF SEASON OPERATIONS

To drain all water from the circuit, remove the external cap by unscrewing it in the anticlockwise direction (fig. 11) and allow the water to drain out into a basin.



When the appliance is empty, replace the caps.

Clean the filter and dry thoroughly before putting back.

In order to properly storage the appliance at the end of the season, we suggest you cover it with the supplied end of season dust cover (B9) and you put the accessories in the relevant end of season accessories bag (B8).

## TECHNICAL SPECIFICATIONS

Power supply voltage	see rating label
Max. absorbed power during air conditioning	"
Refrigerant	"
Cooling capacity	"

### ONLY FOR SERVICE CENTERS USE:


The wiring diagram is located inside the unit.

**Please note:** outside of these conditions, the unit will take longer or may not reach the cooling temperature that is set.

### LIMIT CONDITIONS

Room temperature for air conditioning	61° ÷ 95°F (16-35 °C)
Maximum relative humidity	80% RH

## TROUBLESHOOTING

PROBLEM	CAUSE	SOLUTION
The air conditioner does not come on	it is not plugged into the outlet	plug into the outlet
	there is no power	wait for the current to return
	the internal safety device has tripped	call the Service Center
The air conditioner works for a short time only	there are bends or kinks in the air exhaust hose	position the air hose correctly, keeping it as short and free of curves as possible to avoid bottlenecks
	something is preventing the air from being discharged	check and remove any obstacles obstructing air discharge
The air conditioner works, but does not cool the room	windows, doors and/or curtains open	close doors, windows and curtains, bearing in mind the "TIPS FOR CORRECT USE" given above
	there are heat sources in the room (oven, hairdryer, etc	minimize heat sources impact by setting on low or unplugging unnecessary sources
	the air exhaust hose is detached from the appliance	fit the air exhaust hose in the housing at the back of the appliance (fig. 6).
	filter clogged	clean or replace the filter as described above
	the technical specification of the appliance is not adequate for the room in which it is located.	
During operation, there is an unpleasant smell in the room	filter clogged or dirty	clean the filter as described above
The air conditioner does not operate for about three minutes after restarting it	an internal safety device prevents the appliance from being restarted until three minutes have elapsed since it was last turned off	wait. This delay is part of normal operation.
The scripts Lt/PF/HL/EI and the symbol  appear on display.	the appliance has a self diagnosis system to identify a number of malfunctions.	see the SELF-DIAGNOSIS chapter

**Transport, filling, cleaning, recovery and disposal of refrigerant should be performed by a technical service centre appointed by the manufacturer only.**

**The appliance should be disposed of by a specialist centre appointed by the manufacturer only.**

### Attention! TO AVOID DAMAGE TO THE UNIT:

NEVER TRANSPORT OR TURN THE APPLIANCE UPSIDE DOWN OR ON ITS SIDE. IF THIS OCCURS, WAIT 6 HOURS BEFORE TURNING THE APPLIANCE ON, 24 HOURS IS RECOMMENDED. After the unit has been on its side, oil needs to return to the compressor to ensure proper function. Without allowing the unit this time (6-24 hours) the unit may function for only a short time, and then the compressor will break down from lack of oil.