

PICCOLINI

USER MANUAL



TABLE OF CONTENTS

1. SAFETY PRECAUTIONS.....	3
2. MACHINE OVERVIEW.....	5
3. BEVERAGE EXAMPLES.....	6
4. RECOMMENDATIONS FOR SAFE USE.....	7
5. FIRST USE.....	8
6. PREPARING A BEVERAGE.....	9
6. 1 ONE CAPSULE (E. G. LUNGO)	9
6. 2 TWO CAPSULES (E. G. CAPPUCCINO)	10
7. CLEANING.....	12
8. DESCALING AT LEAST EVERY 3-4 MONTHS.....	13
9. TROUBLESHOOTING.....	15
9. 1 ON / OFF ICON TURNED TO ORANGE COLOUR	15
9. 2 NO LIQUID COMES OUT - NO WATER?	15
9. 3 NO LIQUID COMES OUT - CAPSULE / INJECTOR BLOCKED?	16
9. 4 VARIOUS	17

1. SAFETY PRECAUTIONS

1. Read all instructions and keep these safety instructions. Any type of misuse of the appliance may result in a potential injury.
2. Connect the appliance to a mains power socket with an earth connection only. Mains voltage must be the same as the details on the rating plate. The use of incorrect connection will negate the guarantee and may be hazardous.
3. This appliance is intended to be used in household only. It is not intended to be used in following applications, and the guarantee will not apply for:
 - staff kitchen areas in shops, offices and other working environments;
 - farm houses;
 - by clients in hotels, motels and other residential type environments;
 - bed and breakfast type environments;
4. Your appliance is intended for domestic use inside the home only at an altitude below 3400 m.
5. In case of any inappropriate use or failure to comply with the instructions, the manufacturer accepts no responsibility and the guarantee may not apply.
6. We recommend using the NESCAFÉ® Dolce Gusto® capsules designed and tested for the NESCAFÉ® Dolce Gusto® machine. They were designed to interact together – the interaction provides the in-cup quality that NESCAFÉ® Dolce Gusto® is known for. Each capsule is designed to prepare a perfect cup, and cannot be reused.
7. Do not remove hot capsules by hand. Always use capsule holder handle to dispose of used capsules.
8. Always use the appliance on a flat, stable, heat resistant surface away from sources of heat or water splashes. This appliance shall not be placed in a cabinet when in use.
9. To protect against fire, electric shock and injury to persons do not immerse the power cord, plugs or the appliance in water or other liquid. Avoid spillage on the plug. Never touch the power cord with wet hands. Do not overfill the water tank.
10. In case of an emergency remove the plug from the mains power socket immediately.
11. Close supervision is necessary when the appliance is used near children. Keep the appliance / power cord / capsule holder out of reach of children. Children should be supervised to ensure that they do not play with the appliance. Never leave the appliance without surveillance while making a beverage.
12. This appliance is not intended for use by children or persons with reduced physical, sensory or mental capabilities, or lack of experience and knowledge, unless they have been given supervision or instruction concerning use of the appliance by a person responsible for their safety. Persons who have a limited or no understanding of the operation and use of this appliance must first read and fully understand the contents of the user manual, and where appropriate seek additional guidance on its operation and use from the person responsible for their safety.
13. Do not use the appliance without the drip tray and drip grid, except when a very tall mug is used. Do not use the appliance for hot water preparation.
14. For health reasons, always fill the water tank with fresh drinking water.
15. After use of the appliance always remove the capsule and clean the capsule holder. Empty and clean the drip tray and capsule bin daily. Users allergic to dairy products: Rinse the appliance according to the cleaning procedure.
16. The heating element surface is subject to residual heat after use and plastic housings may feel warm to touch several minutes upon use.
17. Unplug from the mains power socket when not in use for a long time.
18. Unplug from the mains power socket before cleaning. Allow to cool before putting on or taking off parts, before cleaning the appliance. Never clean wet or immerse appliance in any fluid. Never clean the appliance with running water. Never use detergents to clean the appliance. Clean the appliance only using soft sponges/brushes. The water tank should be cleaned with a clean food-safe brush.
19. Never turn the machine upside down.
20. If away for prolonged periods, on holiday, etc. the appliance must be emptied, cleaned and unplugged. Rinse before reuse. Operate the rinse cycle before re-using your appliance.
21. Do not turn off the appliance during the descaling process. Rinse the water tank and clean the appliance to avoid any residual descaling agent.
22. Any operation, cleaning and care other than normal use must be undertaken by after-sales service centres designated by NESCAFÉ® Dolce Gusto® hotline. Do not dismantle appliance and do not put anything into openings.
23. In case of intensive use without allowing sufficient cooling time, the appliance will stop functioning temporarily with the red indicator light blinking. This is to protect your appliance from overheating. Switch the appliance off for 20 minutes to let it cool down.
24. Do not operate any appliance with a damaged cord or plug. If the power cord is damaged, it must be replaced by the manufacturer, its service agent or similarly qualified persons in order to avoid a hazard. Do not operate any appliance that malfunctions or has been damaged in any manner. Unplug cord immediately. Return the damaged appliance to the nearest authorised service facility designated by NESCAFÉ® Dolce Gusto® hotline.
25. The use of accessory attachments not recommended by the appliance manufacturer may result in fire, electric shock or injury to persons.

26. Do not let the cord hang over the edge of a table or counter, or touch hot surfaces or sharp edges. Do not allow the cord to dangle (risk of tripping up). Never touch the cord with wet hands.
27. Do not place on or near a hot gas or electric burner, or in a heated oven.
28. To disconnect, turn the machine off, then remove the plug from the mains power socket. Do not unplug by pulling the cord.
29. Always insert the capsule holder in the machine to prepare a beverage. Do not pull out the capsule holder before the indicator stops blinking. The appliance will not work if the capsule holder is not inserted.
30. Machines equipped with a locking handle: Scalding may occur if the locking handle is opened during the brewing cycles. Do not pull up the locking handle before the lights on the machine stop flashing.
31. Do not put fingers under the outlet during beverage preparation.
32. Do not touch the injector of the machine head.
33. Never carry the appliance by the machine head.
34. The capsule holder is equipped with a permanent magnet. Avoid placing the capsule holder near appliances and objects that can be damaged by magnetism, e.g. credit cards, USB drives and other data devices, video tapes, television and computer monitors with picture tubes, mechanical clocks, hearing aids and loud speakers.
35. Patients with pacemakers or defibrillators: Do not hold the capsule holder directly over the pacemaker or defibrillator.
36. If the mains power socket does not match the plug on the appliance, have the plug replaced with a suitable type by aftersales service centres designated by NESCAFÉ® Dolce Gusto® hotline.
37. Packaging is made of recyclable materials. Contact your local council / authority for further information on recycling programs. Your appliance contains valuable materials which can be recovered or recycled.
38. For additional guidance on how to use the appliance, refer to the user manual on www.dolce-gusto.com or call NESCAFÉ® Dolce Gusto® hotline number.
39. Please be aware that the appliance is still using electricity whilst in eco-mode (0.4 W/hour).
40. Keep the appliance and its cord out of reach of children aged less than 8 years. Children shall not play with the appliance.
41. This appliance can be used by children aged from 8 years and above and persons with reduced physical, sensory or mental capabilities or lack of experience and knowledge if they have been given supervision or instruction concerning use of the appliance in a safe way and if they understand the hazards involved.
42. Cleaning and user maintenance shall not be made by children unless they are older than 8 and supervised by an adult.

EUROPEAN MARKETS ONLY:

Think of the environment!



Your appliance contains valuable materials which can be recovered or recycled.

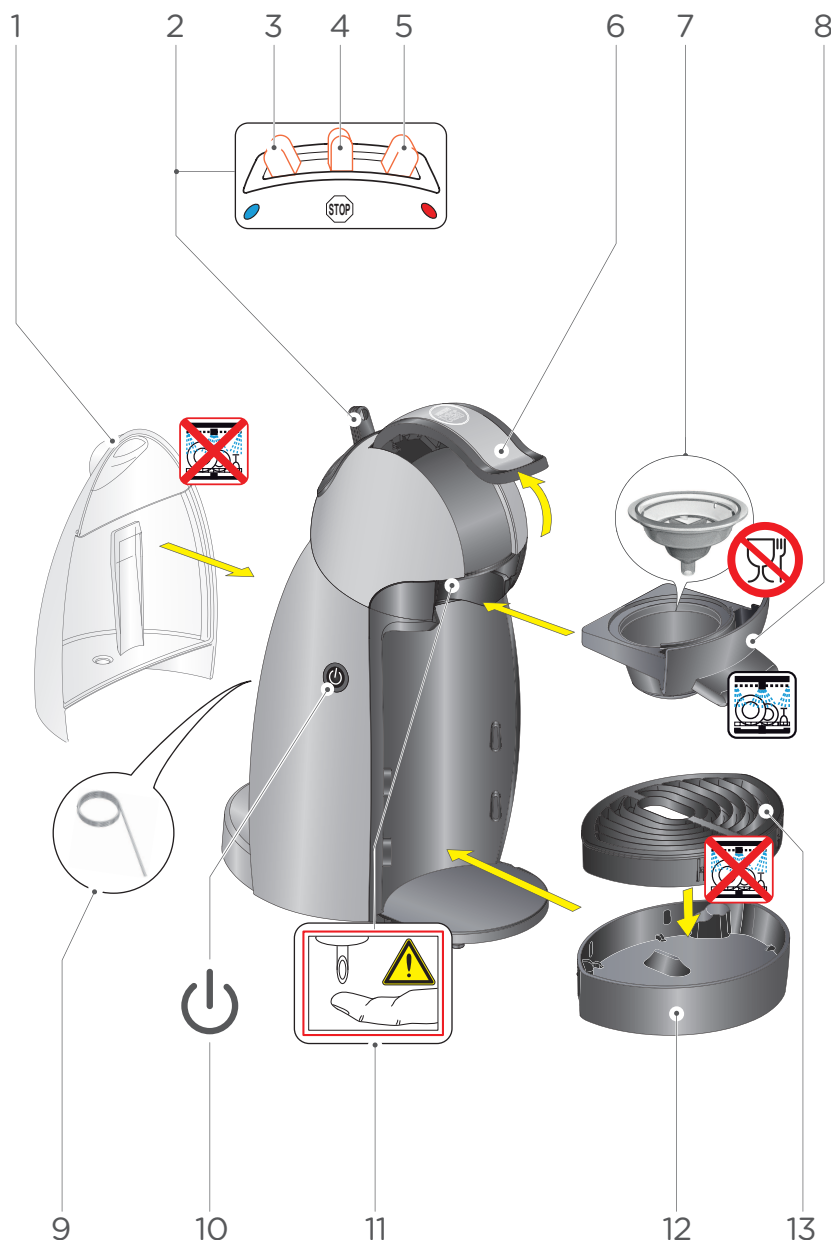
Leave it at a local civic waste collection point or at an approved service centre, where it will be disposed of properly. European Directive 2012/19/EU on Waste Electrical and Electronic Equipment (WEEE), stipulates that used household appliances must not be disposed of in normal unsorted municipal waste. Old appliances must be collected separately to optimise the sorting and recycling of their parts and to reduce the impact on human health and the environment.

The guarantee does not cover appliances that do not work or do not work properly because they have not been maintained and/or descaled.



To reduce the risk of fire or electric shock, do not remove the cover. No user serviceable parts inside. Repair should be done by authorized service personnel only!

2. MACHINE OVERVIEW









1. Water tank
2. Selection lever
3. Cold
4. Stop
5. Hot
6. Locking handle
7. Rinsing tool
8. Capsule holder
9. Cleaning needle
10. Power button / Descaling signal / Error signal
11. Injector
12. Drip tray
13. Drip grid

ECONOMY MODE:

After 5 minutes of non-usage.



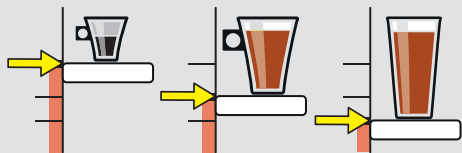
TECHNICAL DATA

-  AU/NZ: 220-240 V, 50/60 Hz, 1340-1600 W
-  max. 15 bar
-  0.6 L
-  ~2.4 kg
-  5-45 °C
41-113 °F
-  A = 15.9 cm
B = 28.7 cm
C = 22 cm

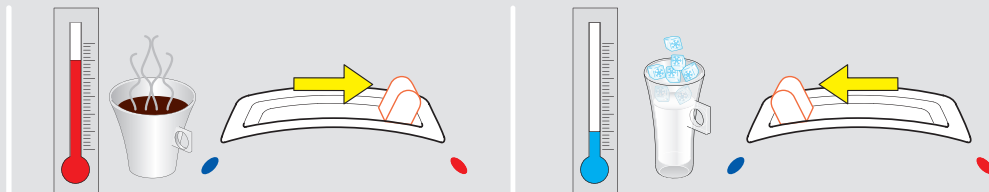


3. BEVERAGE EXAMPLES

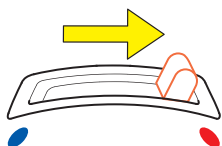
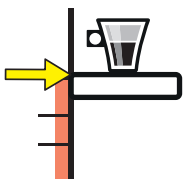
Adjust drip tray



Choose hot or cold



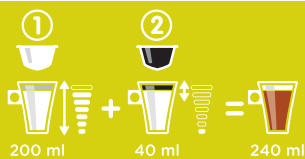
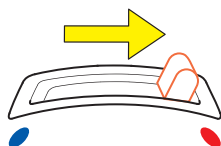
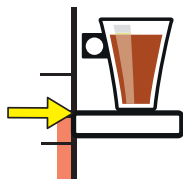
ESPRESSO



CAPPUCCINO



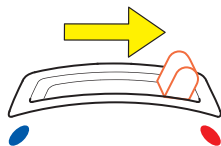
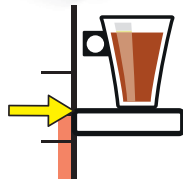
① + ②



CHOCOLETTO



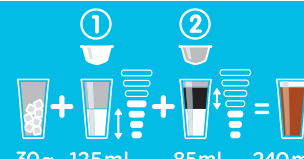
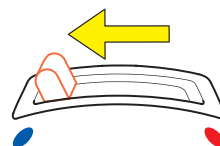
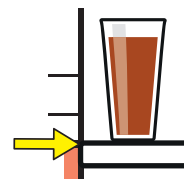
① + ②



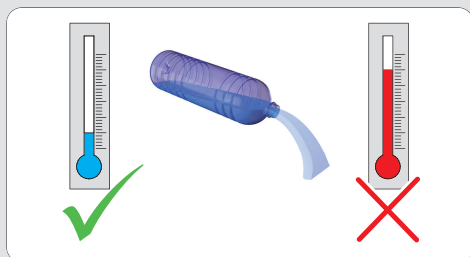
CAPPUCCINO ICE



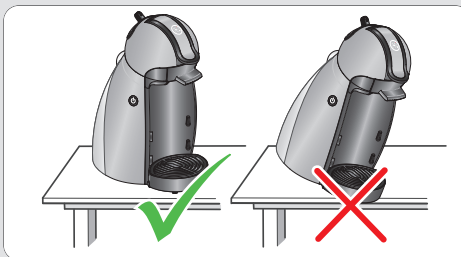
① + ②



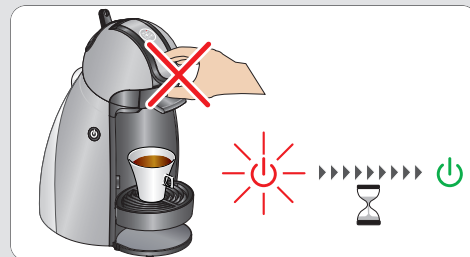
4. RECOMMENDATIONS FOR SAFE USE



- ⚠ Never add hot water to the water tank!
- ⚠ For rinsing and beverage preparation only use drinking water.



- ⚠ Always keep the machine upright!



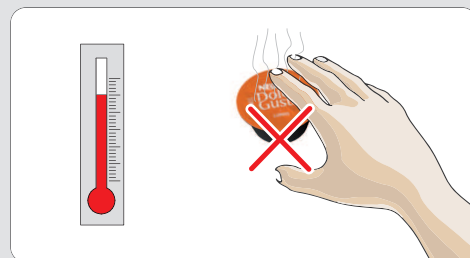
- ⚠ After finishing preparation the power button blinks red for about 5 seconds. During that time do not open locking handle!



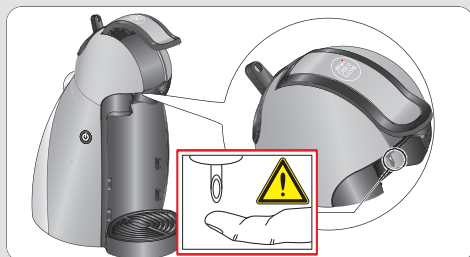
- ⚠ Do not touch plug with wet hands. Do not touch machine with wet hands!



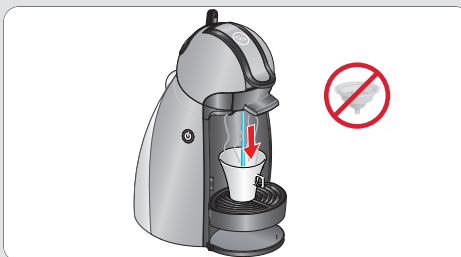
- ⚠ Never use a wet sponge. Only use a soft damp cloth to clean the top of the machine.



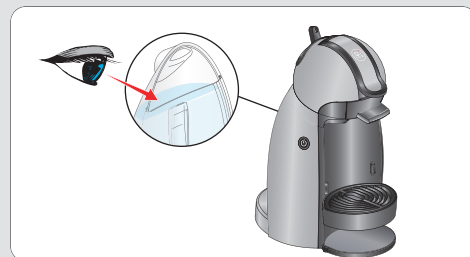
- ⚠ Do not touch used capsule after beverage preparation! Hot surface, risk of burns!



- ⚠ Never touch injector with surface of finger!

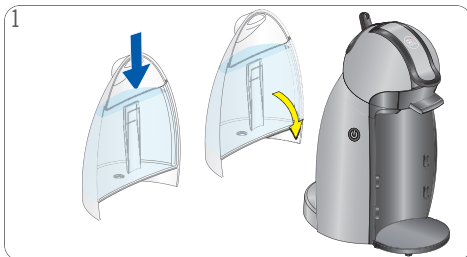


- ⚠ Do not use the rinsing tool for tea or hot water preparation.

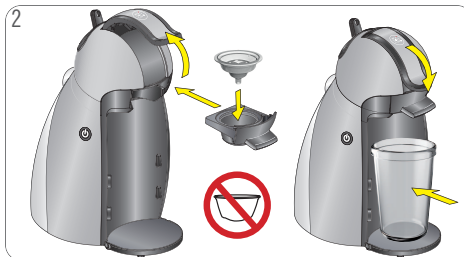


- ⚠ If away for more than 2 days (on holidays etc.) the machine must be emptied, cleaned and unplugged. Before reuse rinse machine according to instructions in 7. "Cleaning" on page 12, beginning with step 4 to step 8.

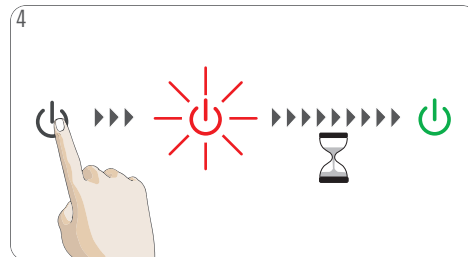
5. FIRST USE



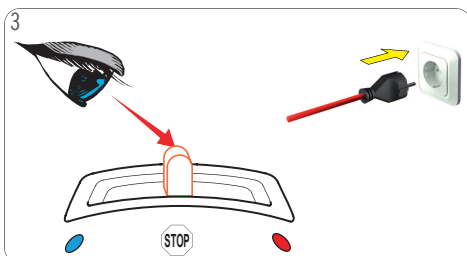
1 Rinse water tank manually with fresh drinking water. Fill water tank with fresh drinking water. Insert water tank into machine.



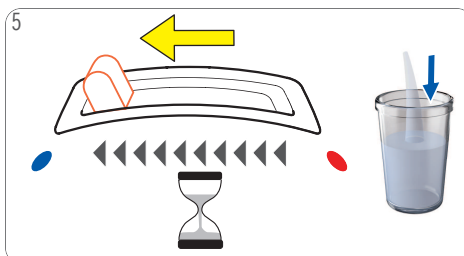
2 Open locking handle. Make sure that rinsing tool is in capsule holder and capsule holder is in machine. Close locking handle. Place a large empty container underneath the coffee outlet.



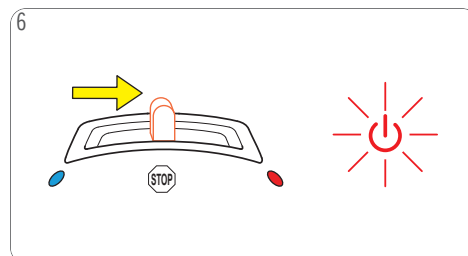
4 Switch on machine. Power button starts blinking red while machine is heating up for approximately 40 seconds. Afterwards power button lights steady green. Machine is ready to be used.



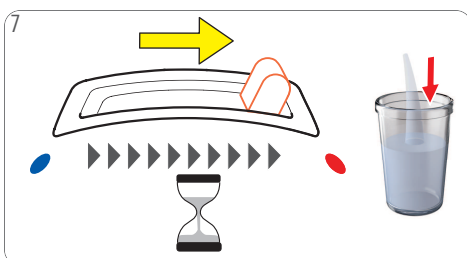
3 Make sure that the selection lever is in "STOP" position. Ensure to use the correct mains voltage as given in 2. "MACHINE OVERVIEW" on page 5. Connect power plug to mains power socket.



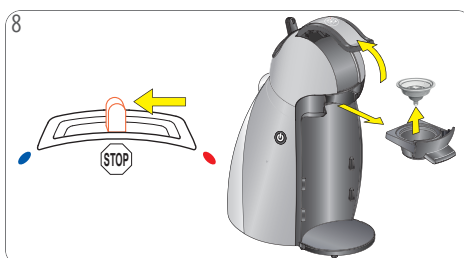
5 Push selection lever to the "COLD" position. Machine starts rinsing.



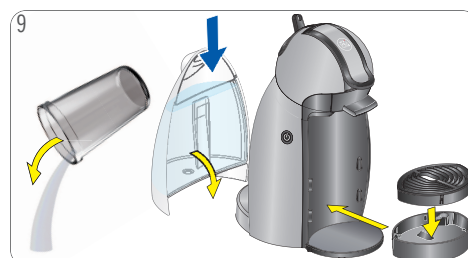
6 After approximately 60 seconds push selection lever to the "STOP" position. Machine stops rinsing. Power button blinks red for about 5 seconds.



7 Push selection lever to the "HOT" position. Machine starts rinsing.



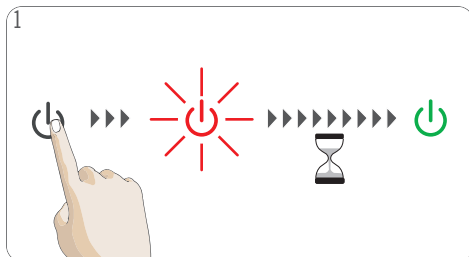
8 After approximately 60 seconds push selection lever to the "STOP" position. Open locking handle. Pull out capsule holder. Remove rinsing tool. Reinsert capsule holder.



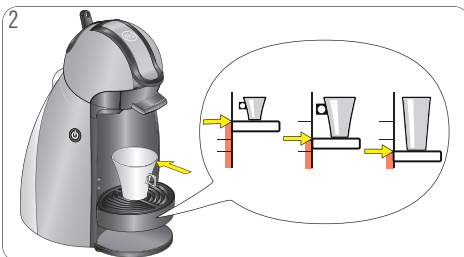
9 Empty container. Fill water tank with fresh drinking water. Insert water tank into machine. Place drip grid on drip tray. Then insert drip tray at desired position.

6. PREPARING A BEVERAGE

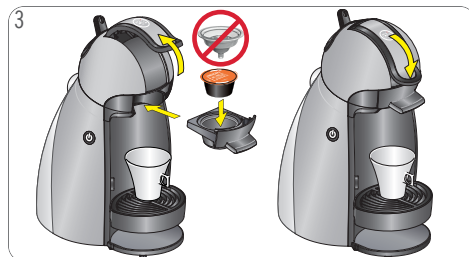
6.1 ONE CAPSULE (E. G. LUNGO)



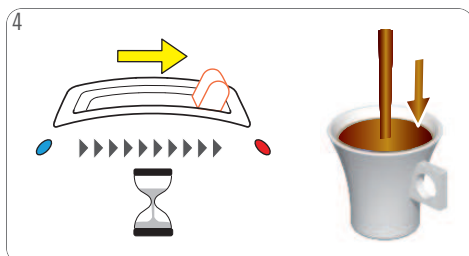
Check if the water tank contains enough fresh drinking water. Switch on machine. Power button starts blinking red while machine is heating up for approximately 40 seconds. Afterwards power button lights steady green. Machine is ready to be used.



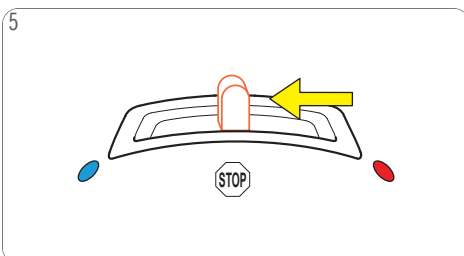
Adjust drip tray position. Place cup with correct cup size on drip tray. See "BEVERAGE EXAMPLES" or package.



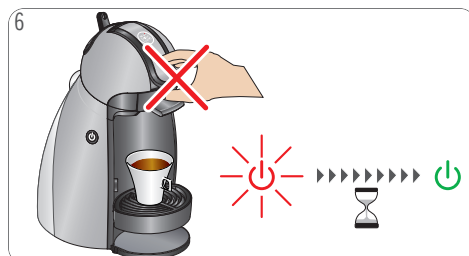
Open locking handle. Pull out capsule holder. Make sure rinsing tool is not inside. Insert capsule in capsule holder. Insert it back into machine. Close locking handle.



Push selection lever to the "HOT" or "COLD" position as recommended on capsule packs. Beverage preparation starts.



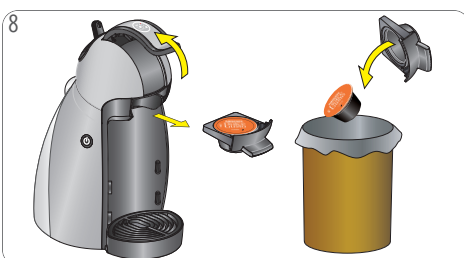
Stay beside the machine throughout the preparation! After reaching the desired level push selection lever to the "STOP" position. Machine stops preparation.



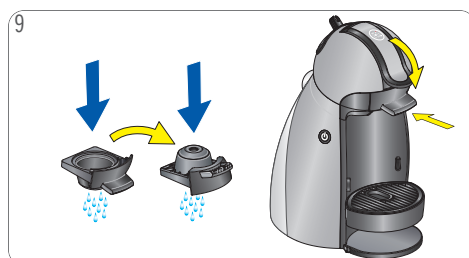
After finishing preparation the power button blinks red for about 5 seconds. **During that time do not open locking handle!**



After extraction is finished remove cup from drip tray.



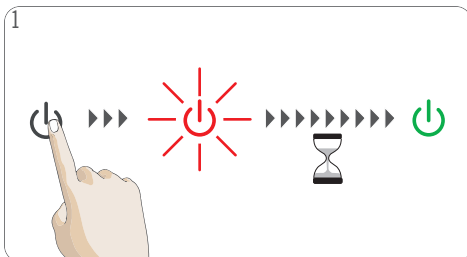
Open locking handle. Pull out capsule holder. Remove used capsule. Put used capsule in dustbin.



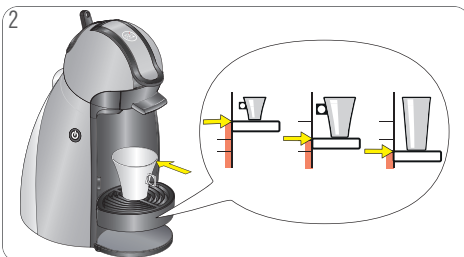
Rinse capsule holder with fresh drinking water from both sides. Dry capsule holder. Insert it back into machine. Enjoy your beverage!

6. PREPARING A BEVERAGE

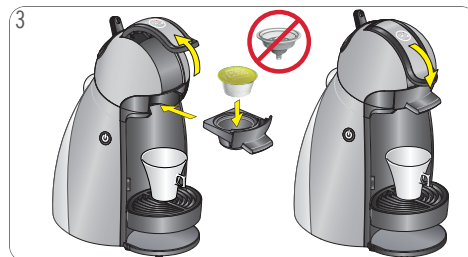
6.2 TWO CAPSULES (E. G. CAPPUCCINO)



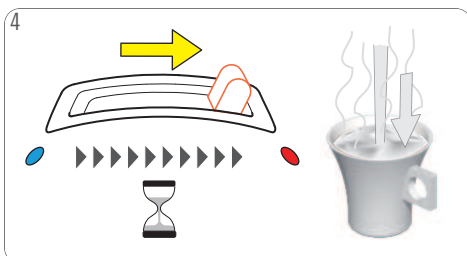
Check if the water tank contains enough fresh drinking water. Switch on machine. Power button starts blinking red while machine is heating up for approximately 40 seconds. Afterwards power button lights steady green. Machine is ready to be used.



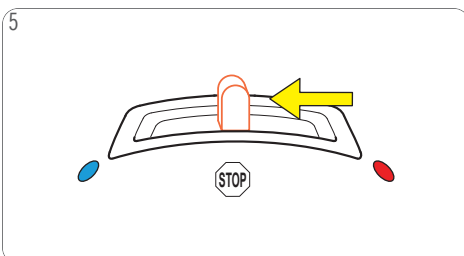
Adjust drip tray position. Place cup with correct cup size on drip tray. See "BEVERAGE EXAMPLES" or package.



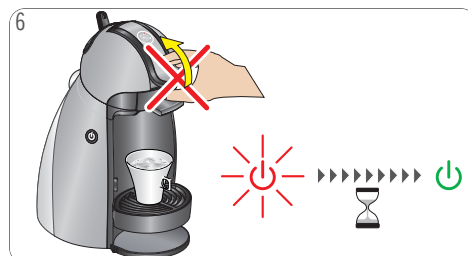
Open locking handle. Pull out capsule holder. Make sure rinsing tool is not inside. Insert first capsule in capsule holder. Insert it back into machine. Close locking handle.



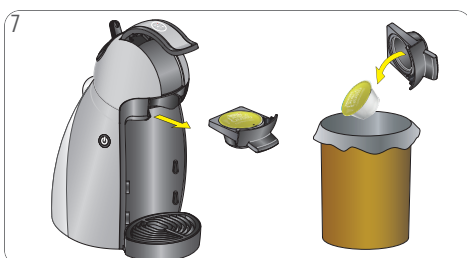
Push selection lever to the "HOT" or "COLD" position as recommended on capsule packs. Beverage preparation starts.



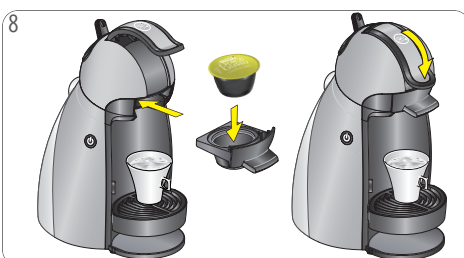
Stay beside the machine throughout the preparation! After reaching the desired level push selection lever to the "STOP" position. Machine stops preparation.



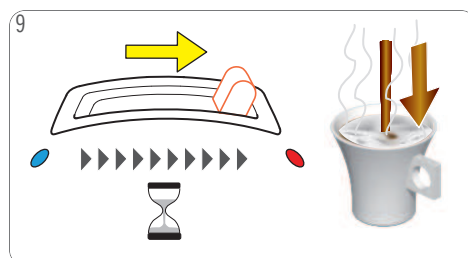
After finishing preparation the power button blinks red for about 5 seconds. **During that time do not open locking handle!**



Open locking handle. Pull out capsule holder. Remove used capsule. Put used capsule in dustbin.



Insert second capsule in capsule holder. Insert it back into machine. Close locking handle.

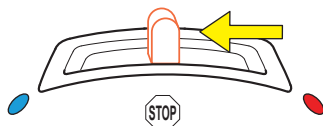


Push selection lever to the "HOT" or "COLD" position as recommended on capsule packs. Beverage preparation starts.

6. PREPARING A BEVERAGE

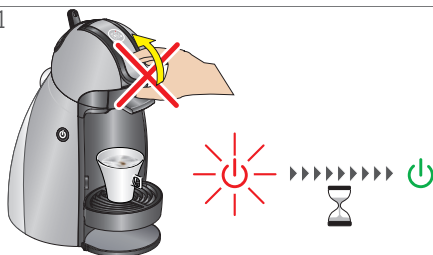
6.2 TWO CAPSULES (E. G. CAPPUCCINO)

10



Stay beside the machine throughout the preparation! After reaching the desired level push selection lever to the "STOP" position. Machine stops preparation.

11



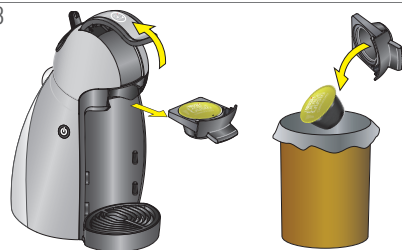
After finishing preparation the power button blinks red for about 5 seconds. **During that time do not open locking handle!**

12



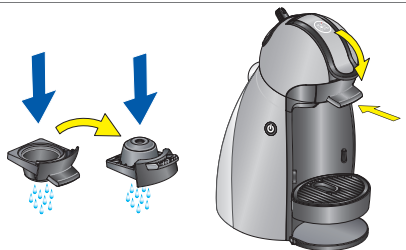
After extraction is finished remove cup from drip tray.

13



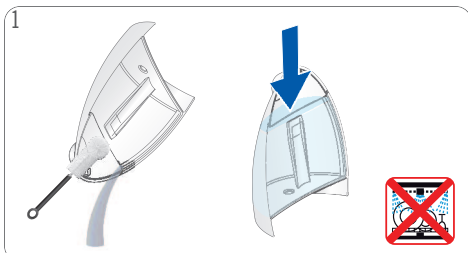
Open locking handle. Pull out capsule holder. Remove used capsule. Put used capsule in dustbin.

14

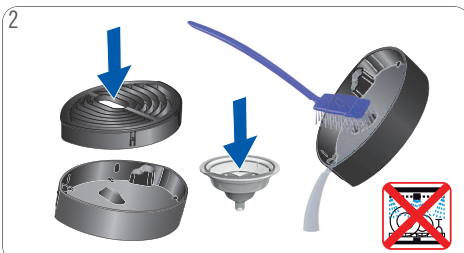


Rinse capsule holder with fresh drinking water from both sides. Dry capsule holder. Insert it back into machine. Enjoy your beverage!

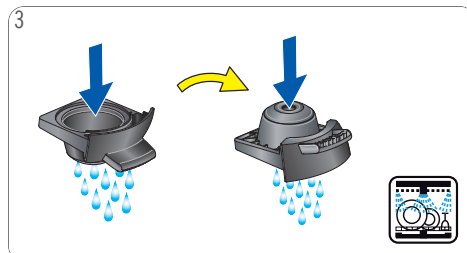
7. CLEANING



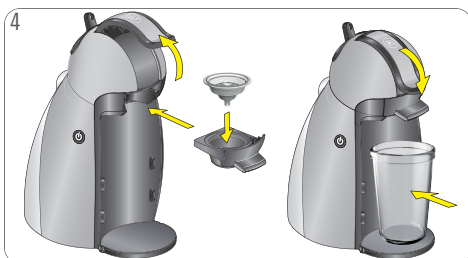
Rinse and clean water tank. Use a clean food-safe brush and washing-up liquid as needed. Afterwards refill with fresh drinking water and insert it into machine. The water tank is not dishwasher proof!



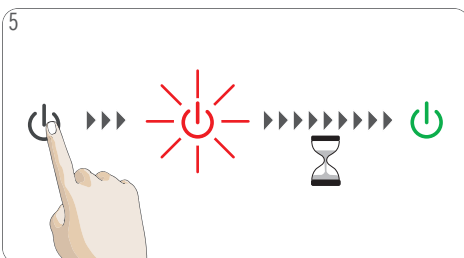
Rinse drip tray and rinsing tool with fresh drinking water. Clean drip tray with clean food-safe brush. The drip tray is not dishwasher proof!



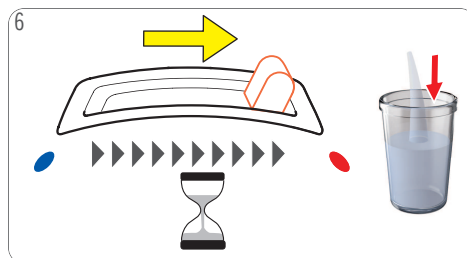
Clean with washing-up liquid and fresh drinking water both sides of capsule holder. Alternatively wash in dishwasher. Dry it afterwards.



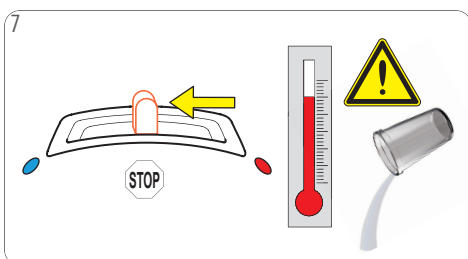
Open locking handle. Put rinsing tool into capsule holder. Insert capsule holder into machine. Close locking handle. Place a large empty container underneath the coffee outlet.



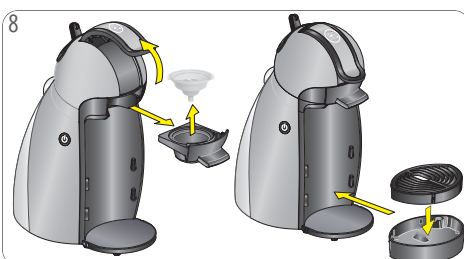
Switch on machine. Power button starts blinking red while machine is heating up for approximately 40 seconds. Afterwards power button lights steady green. Machine is ready to be used.



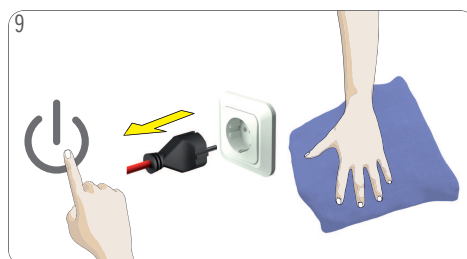
Push selection lever to the "HOT" position. Machine starts rinsing.



After approx. 10 seconds push selection lever to the "STOP" position. Remove and empty container. **Warning: Hot water! Handle with care!**



Open locking handle. Pull out capsule holder. Remove rinsing tool. Reinsert capsule holder. Place drip grid on drip tray. Then insert drip tray at desired position. If any, remove water from water tank.



Switch off machine. Unplug power plug! Clean machine with a soft damp cloth. Dry it afterwards with a soft dry cloth.

8. DESCALING AT LEAST EVERY 3–4 MONTHS

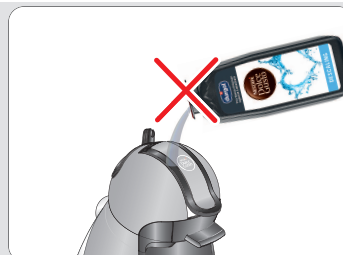


www.dolce-gusto.com

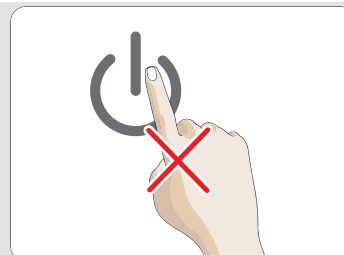
Use NESCAFÉ® Dolce Gusto® liquid descaler. To order, call the NESCAFÉ® Dolce Gusto® hotline or go on the NESCAFÉ® Dolce Gusto® website.



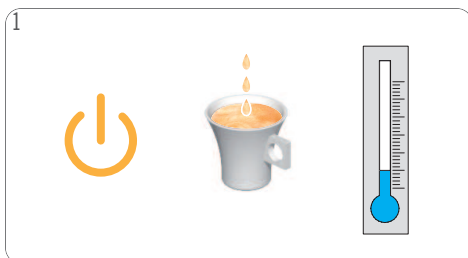
Do not use vinegar for descaling!



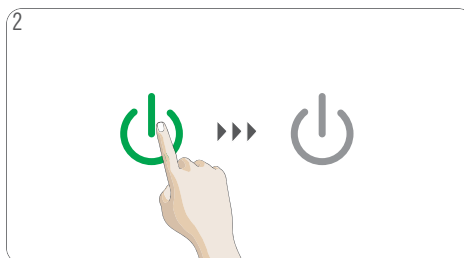
Avoid contact of descaling liquid with any part of the machine.



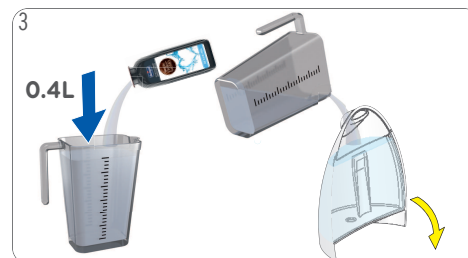
Do not push power button during descaling cycle.



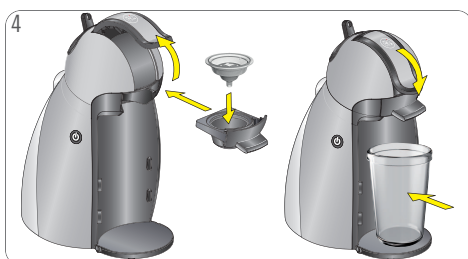
If the beverage comes out slower than usual (even in droplets), or if it is cooler than usual or if the power button is steady orange (descaling signal), the machine has to be descaled.



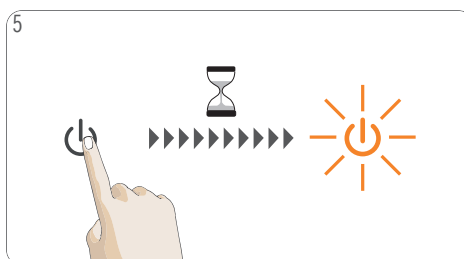
Switch off machine. If any, remove water from water tank.



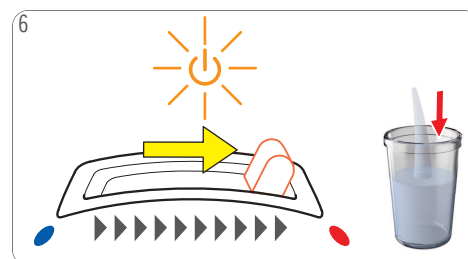
Mix 0.4 liter fresh drinking water with descaler in a measuring cup. Pour descaling solution into water tank and insert water tank into machine.



Open locking handle. Put rinsing tool into capsule holder. Insert capsule holder into machine. Close locking handle. Place a large empty container underneath the coffee outlet.

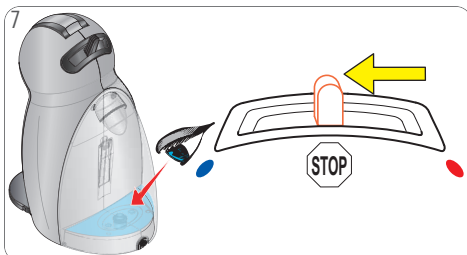


Press and hold power button for at least 5 seconds. Power button starts blinking orange. Machine enters descaling mode.

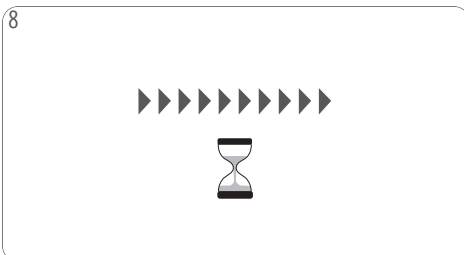


Push selection lever to the "HOT" position. Machine starts rinsing. Power button blinks orange.

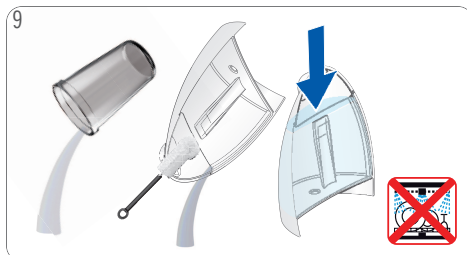
8. DESCALING AT LEAST EVERY 3–4 MONTHS



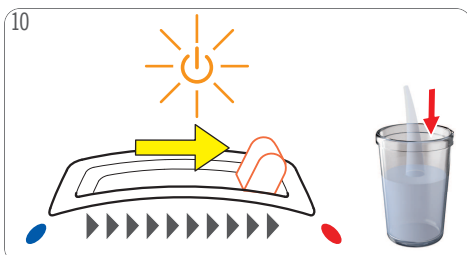
Check visually when water tank is empty. Push selection lever to the "STOP" position.



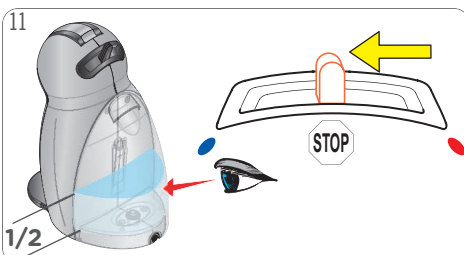
For a better effect of the descaler, wait for 2 minutes to let the descaler work.



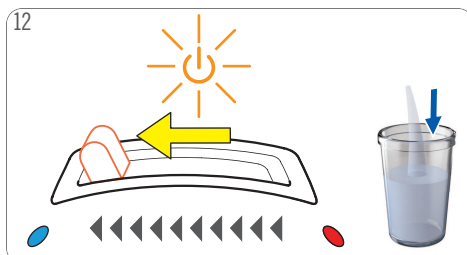
Empty and clean container. Rinse and clean water tank. Use a clean food-safe brush and washing-up liquid as needed. Afterwards refill with fresh drinking water and insert it into machine.



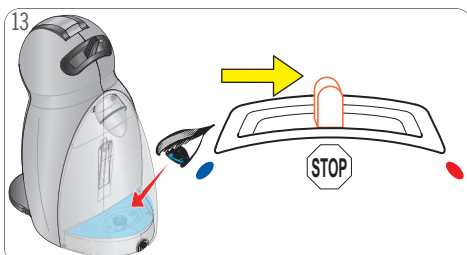
Push selection lever to the "HOT" position. Machine starts rinsing. Power button blinks orange.



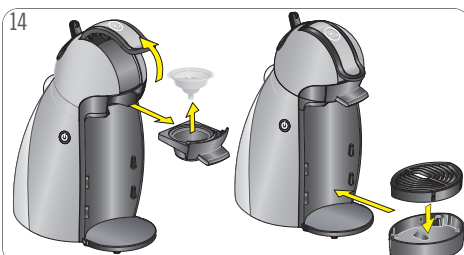
Check visually when water tank is half full. Push selection lever to the "STOP" position.



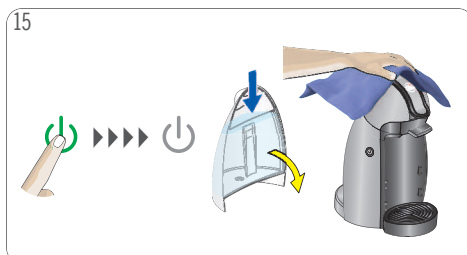
Push selection lever to the "COLD" position. Machine starts rinsing. Power button blinks orange.



Check visually when water tank is empty. Push selection lever to the "STOP" position.



Open locking handle. Pull out capsule holder. Remove rinsing tool. Rinse capsule holder with fresh drinking water from both sides. Reinsert capsule holder. Empty and clean container. Place drip grid on drip tray. Then insert drip tray at desired position.



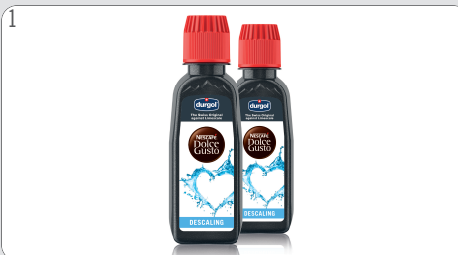
Switch off machine. Rinse and clean water tank. Fill water tank with fresh drinking water. Insert it back into machine. Clean machine with a soft damp cloth. Dry it afterwards with a soft dry cloth.

9. TROUBLESHOOTING

9.1 ON / OFF ICON TURNED TO ORANGE COLOUR



ON / OFF ICON TURNED TO ORANGE COLOUR

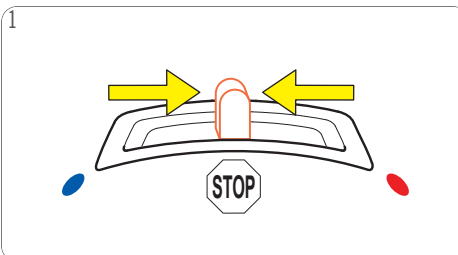


This means that the machine needs to be descaled. Follow instructions in 8. "Descaling at least every 3–4 months" on page 13.

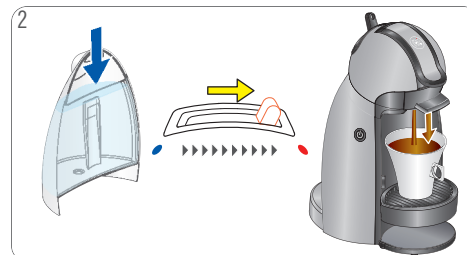
9.2 NO LIQUID COMES OUT – NO WATER?



No liquid comes out and the machine makes a loud noise.



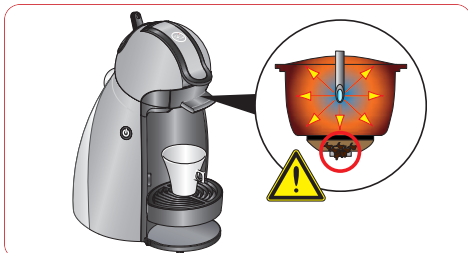
Push selection lever to the "STOP" position.



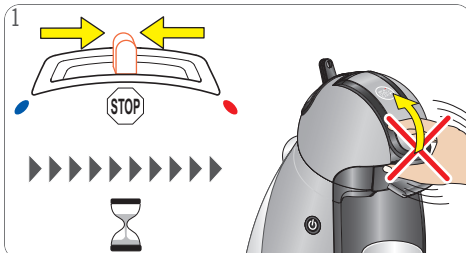
Check if the water tank contains enough fresh drinking water. If not, refill with fresh drinking water and push selection lever to the "HOT" position respectively "COLD" to continue preparation. If the water tank is full proceed as described in "NO LIQUID COMES OUT – CAPSULE / INJECTOR BLOCKED?" on page 16.

9. TROUBLESHOOTING

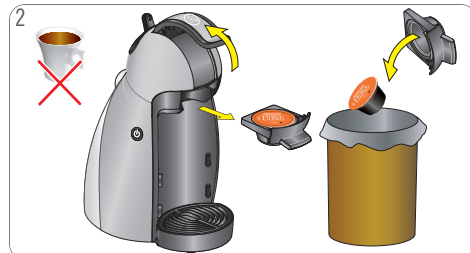
9.3 NO LIQUID COMES OUT – CAPSULE / INJECTOR BLOCKED?



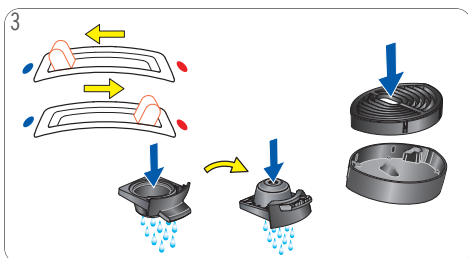
No liquid comes out. The capsule may be blocked and under pressure.



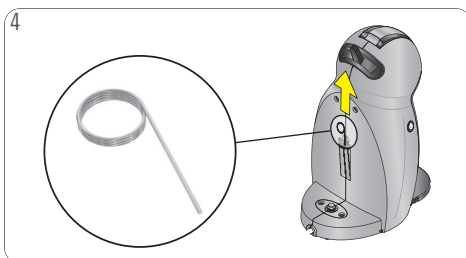
Always keep the machine upright! To stop preparation, push selection lever to the "STOP" position. Do not open locking handle by force. Machine releases pressure. Wait for 20 minutes to reduce the pressure.



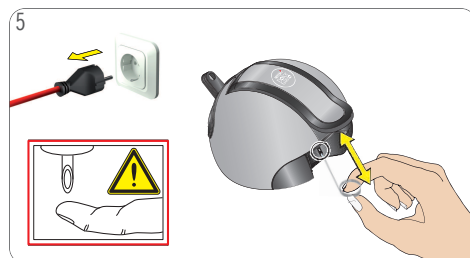
Do not drink the coffee! Lift the locking handle. Remove capsule holder. Put used capsule in capsule bin.



Rinse the machine: Follow instructions in 5. on page 1. Clean with washing-up liquid and fresh drinking water both sides of capsule holder. Rinse drip tray with fresh drinking water and clean it with a clean food-safe brush.



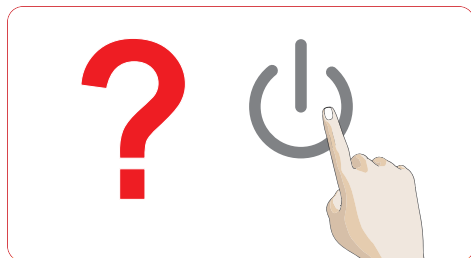
Close locking handle. Remove the water tank and take out the cleaning needle. **Keep needle out of reach of children!**



Close locking handle. Remove the water tank and take out the cleaning needle. **Keep needle out of reach of children!** Clean injector with cleaning needle. Follow instructions in 8. "Descaling at least every 3–4 months" on page 13.

9. TROUBLESHOOTING

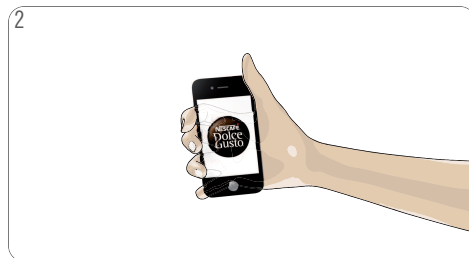
9.4 VARIOUS



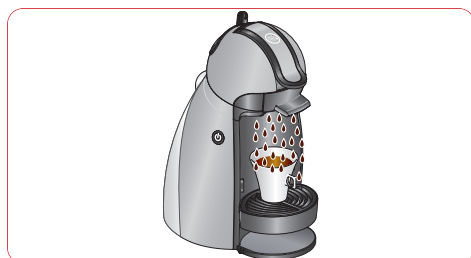
Machine cannot be switched on.



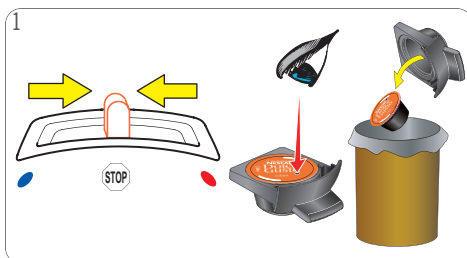
1 Check if the power plug is correctly plugged into a mains power socket. If yes, check your electricity supply.



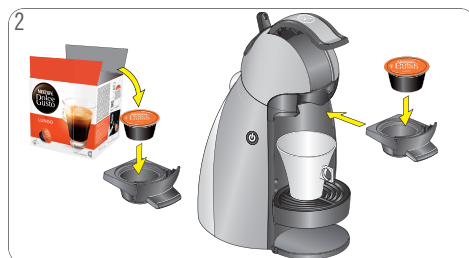
2 If machine still cannot be switched on, call the NESCAFÉ® Dolce Gusto® hotline. For hotline numbers see "Machine Hotlines".



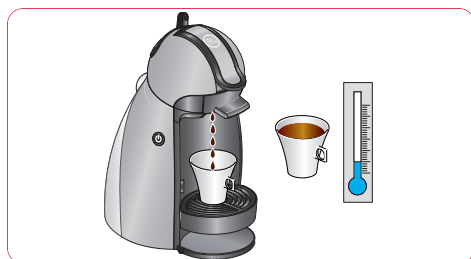
Beverage is splashing out of coffee outlet.



1 Push selection lever to the "STOP" position. Pull out capsule holder. Put used capsule in dustbin.



2 Insert a new capsule in capsule holder and insert it back into machine.



If the beverage comes out slower than usual (even in droplets), or if it is cooler than usual the machine has to be descaled.



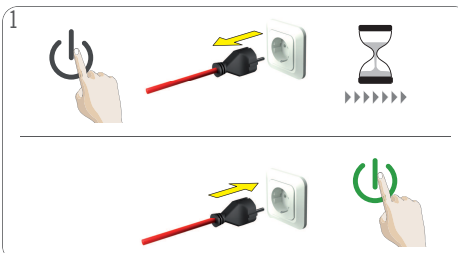
1 Use NESCAFÉ® Dolce Gusto® liquid descaler. To order, call the NESCAFÉ® Dolce Gusto® hotline or go on the NESCAFÉ® Dolce Gusto® website.

9. TROUBLESHOOTING

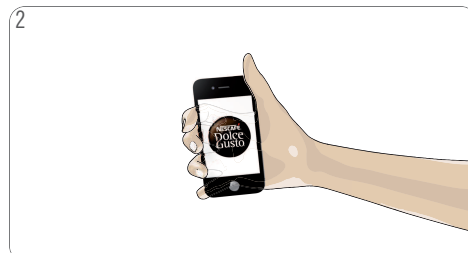
9.4 VARIOUS



Power button flashes red fast.



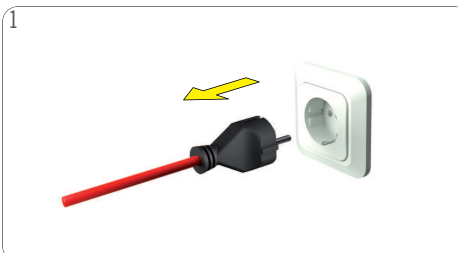
Switch off machine. Check if capsule is blocked, see "NO LIQUID COMES OUT – CAPSULE / INJECTOR BLOCKED?" on page 16. Unplug power plug and wait 20 minutes. Afterwards plug power plug into mains power socket and switch machine on.



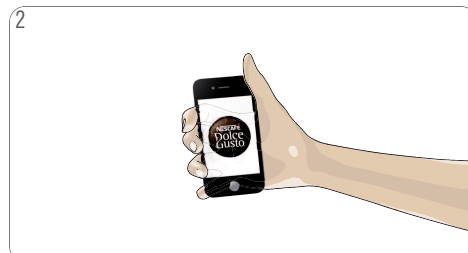
If power button still flashes red call the NESCAFÉ® Dolce Gusto® hotline. For hotline numbers see "Machine Hotlines".



Water accumulates underneath or around machine. Clear water leaks around capsule holder during beverage preparation.



Unplug power plug!



Call the NESCAFÉ® Dolce Gusto® hotline or go on the NESCAFÉ® Dolce Gusto® website. For hotline numbers see last page.



Water is splashing out of coffee outlet during rinsing or descaling.



Put rinsing tool into capsule holder. Insert capsule holder into machine.





HOTLINES

AE 800348786	GB 0800 707 6066	MK 0800 00 200	TH 1-800-295588
AL 0842 640 10	GR 800 11 68068	MT 80074114	0-2657-8601
AR 0800 999 81 00	GT 1-800-299-0019	MY 1800 88 3633	TR 0800 211 02 18
AT 0800 365 23 48	HK (852) 21798999	NI 1-800-4000	4 44 31 60
AU 1800 466 975	HN 800-2220-6666	NL 0800-3652348	TT (868) 663-7853
BA 0800 202 42	HR 0800 600 604	NO 800 80 730	TW 0800-000-338
BE 0800 93217	HU 06 40 214 200	NZ 0800 365 234	UA 0 800 50 30 10
BG 0 800 1 6666	ID 0800 182 1028	PA 800-0000	US 1-800-745-3391
BR 0800 7762233	IE 00800 6378 5385	PE 80010210	UY 0800-2122
CA 1 888 809 9267	IL 1-700-50-20-54	PH 898-0061	VN 1800 6699
CH 0800 86 00 85	IT 800365234	PK 0800-62282	ZA +27 11 514 6116
CL 800 800 711	JO +962-65902998	PL 0800 174 902	
CO 01800-05-15566	JP 0120-879-816	PT 800 200 153	
CN 400 630 4868	KR 080-234-0070	PY 0800-112121	
CR 0800-507-4000	KW +965 22286847	QA +974-44587688	
CZ 800 135 135	KZ 8-800-080-2880	RO 0 800 8 637 853	
DE 0800 365 23 48	LB +961-4548595	RU 8-800-700-79-79	
DK 80 300 100	LU 8002 3183	SA 8008971971	
DO (809) 508-5100	LT 8 700 55 200	SE 020-299200	
EC 1800 637-853 (1800 NESTLE)	LV 67508056	SG 1 800 836 7009	
EE 6 177 441	MA 080 100 52 54	SI 080 45 05	
ES 900 10 21 21	ME 020 269 902	SK 0800 135 135	
FI 0800 0 6161	Middle East: +971 4- 8100081	SR 0800 000 100	
FR 0 800 97 07 80	MX 01800 365 2348	SV 800-6179	