

User Manual



WINDOW CLEANER



ALDI guarantees that our exclusive brand products are developed to our stringent quality specifications. If you are not entirely satisfied with this product, please return it to the nearest ALDI store within 60 days from the date of purchase, for a full refund or replacement, or take advantage of our after sales support by calling the supplier's Customer Service Hotline.



Made in China

EASY HOME® is a registered trademark of ALDI Stores

DISTRIBUTED BY:

ALDI STORES

1 SARGENTS ROAD

MINCHINBURY NSW 2770

www.aldi.com.au

AFTER SALES SUPPORT

814014 W¹

1800 099 385

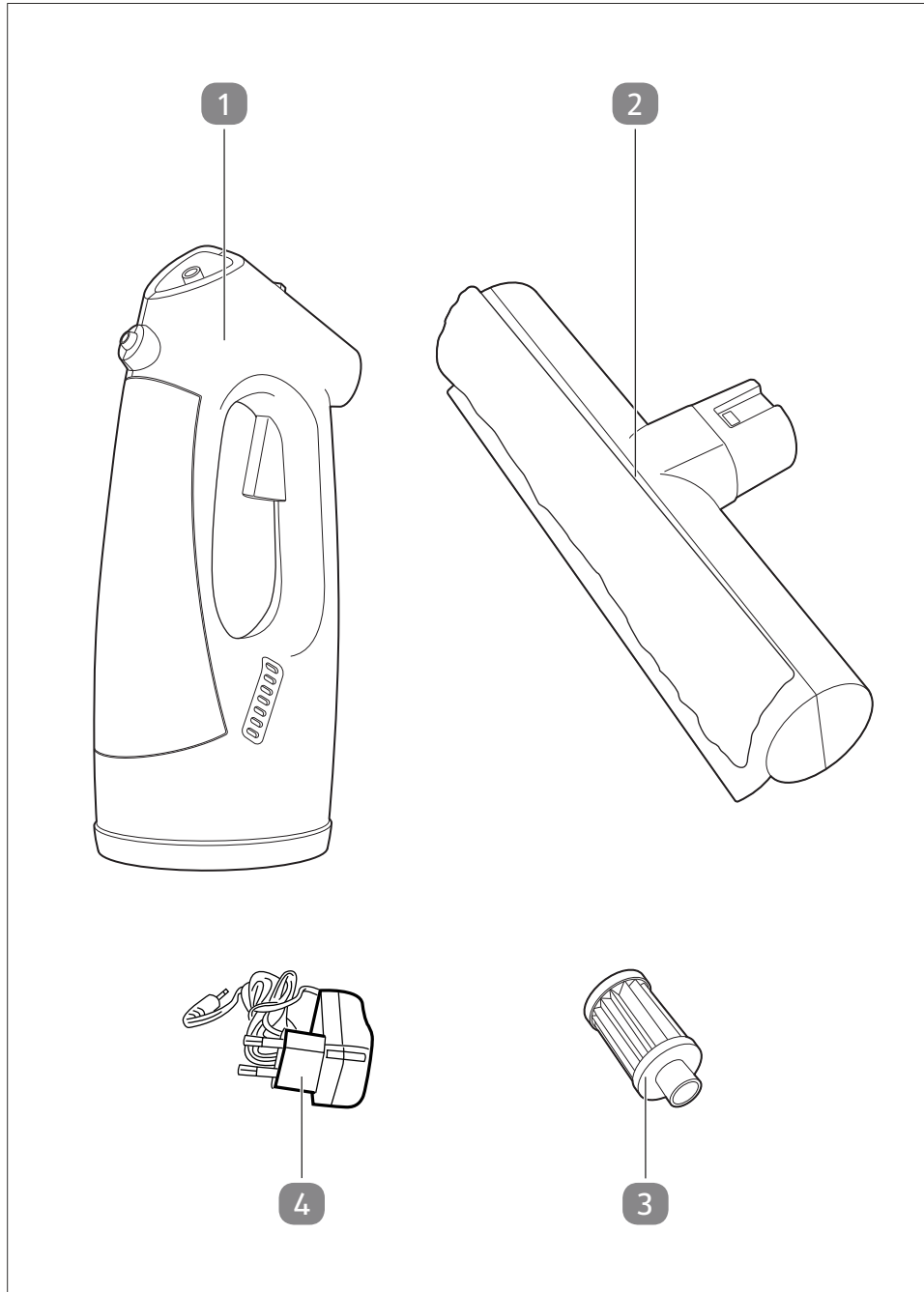
customerservice@mann-noble.com

MODEL:
4115

09/2022

3
YEAR
WARRANTY

cod. 5215108800 rev. 0 - 17/02/22



Package contents

- 1 Basic device
 - 2 Wipe and suction attachment
 - 3 Filter
 - 4 Charger
- User manual and warranty card (not shown)

Table of content

| | |
|--|-----------|
| Overview | 2 |
| Package contents | 3 |
| General information | 5 |
| Reading and storing the user manual..... | 5 |
| Proper use..... | 5 |
| Explanation of symbols | 5 |
| Safety | 6 |
| Safety notes..... | 7 |
| Before first use | 9 |
| Operation | 10 |
| Controls..... | 10 |
| Assembly..... | 11 |
| Charge Battery..... | 11 |
| Displaying the charge state..... | 12 |
| Filling the water tank..... | 13 |
| Turning the device on and off..... | 13 |
| Spraying..... | 13 |
| Wiping..... | 14 |
| Vacuuming..... | 14 |
| Cleaning | 14 |
| Draining..... | 14 |
| Cleaning..... | 14 |
| Inspection | 15 |
| Storage | 15 |
| Troubleshooting | 16 |
| Technical data | 16 |
| Disposal | 17 |

General information

Reading and storing the user manual



This user manual is part of the window cleaner (hereinafter also called "device"). It contains important information on how to set up and use the device.

Before using the device, read the operating manual carefully, in particular the safety instructions. Failure to follow this operating manual may lead to severe injuries or product damage.

This user manual is based on the standards and regulations that are valid within the Australia. Outside the Australia, please also note the country-specific directives and laws.

Keep this operating manual for future reference. If you pass this device on to a third party, you must also supply this operating manual.

This user manual is also available in PDF format from our after sales support.

Proper use

The device is designed to clean and wipe smooth surfaces such as windows, mirrors and tiles. It is not suited to vacuum up dust or small parts.

This device is intended for private use only and is not suitable for commercial use. Use the device only as described in this operating manual. Any other use is improper and may lead to product damage or even personal injury. This device is not a toy.

The manufacturer or retailer assume no liability for damage caused by improper or incorrect use.

Explanation of symbols

The following symbols and signal words are used in this user manual, on the device or on the packaging.



This symbol provides you with useful additional information on handling and use.

Explanation of symbols



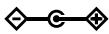
This symbol identifies devices that belong to the protection class II.



Read the operating manual.



The device is designed for interior use only.



This symbol describes the power adaptor's polarity: negative (-), positive (+).



DC voltage

IPX4

The device is protected from all sides against water splashes.

IP20

The device is protected against accidental contact with fingers and against the penetration of solid objects with a diameter over 12 mm. It offers no protection against the penetration of water.



Detachable supply unit



Li-ion battery

Safety

The following signal words are used in this user manual.

⚠ WARNING!

This signal symbol/word denotes a hazard with an average risk level that could lead to death or severe injury if it is not avoided.

⚠ CAUTION!

This signal symbol/word denotes a hazard with a low risk level that could lead to mild or moderate injury if it is not avoided.

NOTE!

This signal word provides a warning about potential material damage.

Safety notes**⚠ WARNING!****Risk of electric shock!**

Faulty electric installation or excess mains voltage can cause an electric shock.

- Only connect the power unit if the mains voltage of the socket matches the information shown on the rating plate.
- Only connect the power unit to an easily accessible socket so that you can quickly disconnect it from the mains power in the event of a malfunction.
- Do not use the device if there is visible damage or if the power cable or the power unit is defective.
- Damaged devices or power units must be replaced by the manufacturer, their after sales support or a similarly qualified person. Repair by an unqualified person increases the safety risk for the user.
- Do not open the device or the housing of the power unit; have repairs performed by qualified experts. Contact the service address indicated on the warranty card. No liability is assumed and warranty claims shall be excluded in the case of unauthorised repairs, improper connection or incorrect operation.
- When repairing, only use parts that correspond to the original device data. There are electrical and mechanical parts in this product to protect you from danger sources.
- Do not operate the power unit using an external timer or separate remote-control system.
- Do not immerse the device, the power unit and the power cable in water or other liquids.
- Never touch the power unit with wet/damp hands.

- Never pull the power unit out of the socket by the power cable; always pull it out by the plug.
- Keep the device, the power unit and the power cable away from open flames and hot surfaces.
- Install the power cable so that no-one can trip over it.
- Do not bend the power cable or position it over sharp edges.
- Only use the device in indoor rooms. Never operate it in damp rooms or in the rain.
- Never store or use the device where it can fall into a tub or sink. Do not use the device if it has fallen into water.
- Never reach for the device if it falls into water. Pull the plug of the power unit immediately in such a case.
- Make sure that children do not insert objects into the device.
- The plug must be removed from the socket before cleaning or servicing the device.
- This device contains batteries that cannot be replaced.

⚠ WARNING!

Risk of injury!

Improper handling poses a risk to children and persons with reduced physical, sensory or mental abilities (such as partially disabled or older persons with restricted physical and mental abilities) or a lack of experience and knowledge (such as older children).

- Children aged 8 years and older as well as persons with reduced physical, sensory or mental abilities or a lack of experience and knowledge may only use this device if they are supervised or have been given instruction on using the device in a safe way and understand the hazards involved.
- Keep children under 8 away from the device and the power cable.
- Children must not play with the device.

- Children must not clean or service the device unsupervised.
- Do not leave the device unattended when in use.
- Do not let children play with the packaging film. They may become tangled when playing and suffocate.

NOTE!**Risk of damage!**

Improper handling can damage the device.

- Never place the device on or near hot surfaces (stove tops, etc.) and never expose the device to high temperatures (heaters, etc.) or to bad weather (rain, etc.).
- Do not let the power cable come into contact with hot parts.
- Do not immerse the device, the power unit and the power cable in water or other liquids.
- Never wash the device in the dishwasher. This would destroy it.
- Only use common glass cleaner for the device. Do not use any grain alcohol or foaming cleaning agents.
- Stop using the device if any of its plastic components are cracked or deformed.
- Do not direct the device and the water jet onto devices that contain electrical components

Before first use

Check the device and scope of delivery

NOTE!**Risk of damage!**

If opening the packaging with a sharp knife or other pointed objects, careless handling can damage the device.

- Therefore, be very careful when opening.
1. Take the device out of the packaging.

Before first use

2. Check that the delivery is complete (see chapter “Package contents”).
3. Inspect the device and individual parts for damage. Do not operate a damaged device; instead, contact the manufacturer via the service center listed on the warranty card.

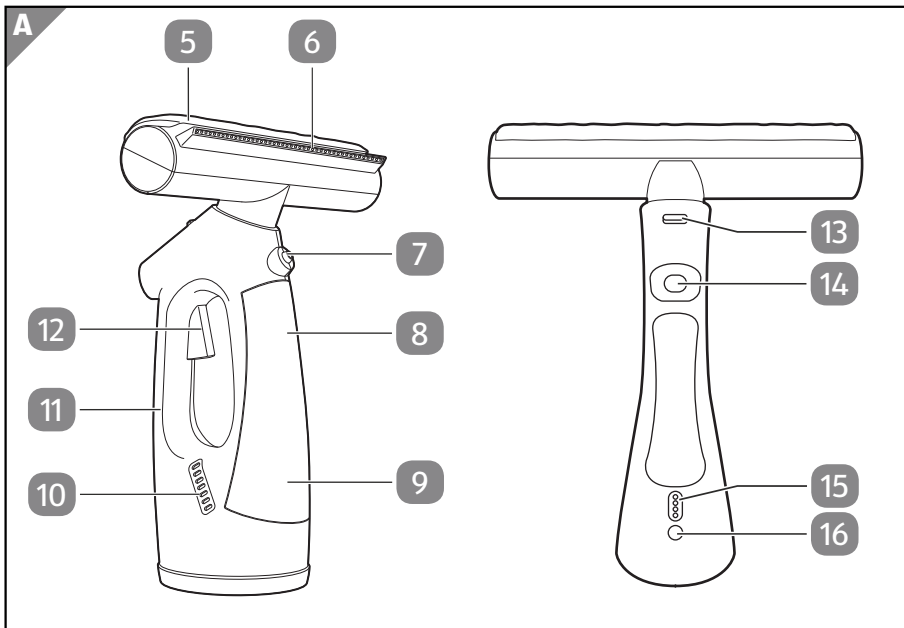
Cleaning the device and accessories

1. Remove the packaging and all protective film.
2. Clean the device and accessories before using them for the first time.

Operation

This chapter describes how to operate the device. The following instructions for use serve for your own safety and for successful, safe use of the device.

Controls



5 Wiper cover

6 Squeegee

7 Spray nozzle

8 Wastewater tank

9 Water tank

10 Air outlet

11 Handle

12 Spray trigger

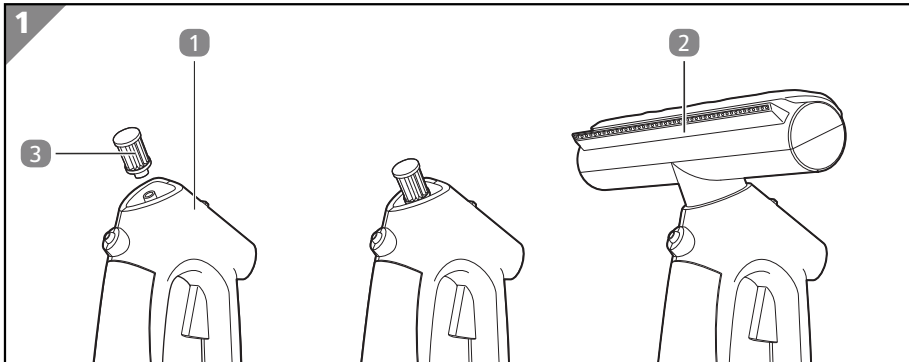
13 Release

14 ON/OFF switch

15 Charge state indicator

16 Charge socket

Assembly



1. Push the filter **3** onto the basic device **1**.
2. Attach the wipe and suction attachment **2** to the basic device.
3. Push the wipe and suction attachment firmly into the basic device.

The device is assembled.

Charge Battery



The battery included in the device cannot be replaced.

⚠ WARNING!

Risk of electric shock!

A faulty electrical installation, excessive line voltage, or incorrect operation may result in an electric shock.

- Only connect the battery charger to an easily accessible outlet so that you can quickly disconnect it from the power supply in the event of a problem.
- To charge the battery, use only the **detachable power supply unit KH6-050100AU** supplied with this device.

NOTE!

Risk of damage!

Improper charging of the battery can damage the battery, the charger and the device.

- Charge the battery at an ambient temperature of between 5 °C and 40 °C. The optimum temperature for charging the battery is approx. 23 °C.
- Charge the battery if the battery charge state indicator shows that the battery is weak (see section "Displaying the charge state").



The device cannot be operated during charging. The charger and the battery heat up during charging. This is due to operating conditions and not a defect.

Charge the battery completely before first use.

1. Plug the mains adapter of the charger **4** into the socket.
2. Plug the power connector of the charger into the charge socket **16**.
The charge state indicator **15** blinks during charging.
Once the battery is completely charged, all LEDs of the battery charge state indicator are permanently lit.
3. Once the device has finished charging, disconnect the charger from the socket and the plug from the charge socket.

Displaying the charge state

- Press the ON/OFF switch **14**.

The device switches on and the charge state indicator **15** shows the current charge state of the integrated battery:

- **One bar:** Battery drained; recharging required
 - **Two to three bars:** Battery partially charged
 - **Four bars:** Battery fully charged
- Press the ON/OFF switch again.
The device is switched off and the display goes off.

Filling the water tank

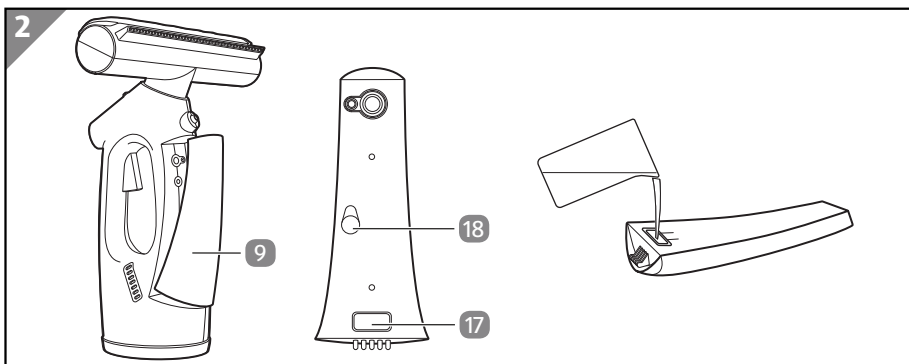
NOTE!

Risk of damage!

- Do not fill any aggressive cleaning agents into the water tank since they could damage the device.



Fill the water tank with distilled water, if your tap water is very hard.



1. Pull the water tank **9** off the device.
2. Pull the plug of the water tank out of the filling hole **17**.
3. Fill the water tank completely with water.

Add a few drops of vinegar to the water tank to remove greasy films and scaling on the surface to be cleaned.

4. Push the plug of the water tank into the filling hole.
5. Insert the water tank in the device.

The water tank is filled.

Turning the device on and off

- Press the ON/OFF switch to turn the device on.
- Press the ON/OFF switch again to turn the device off.

Spraying

1. Grip the device around the handle **11**.
2. Point the spray nozzle **7** towards the surface to be cleaned.

Operation

3. Press the spray trigger **12**.

Press the spray trigger repeatedly until you have applied the desired water quantity on the surface to be cleaned.

Wiping

- Clean the surface with the wiper cover **5**.

If necessary, spray a bit of mild window cleaner onto the surface to be cleaned.

Vacuuming

1. Switch the device on (see section "Turning the device on and off").
2. Slightly press the device with the squeegee **6** onto the surface to be cleaned.
3. Vacuum off the cleaning water.
Keep the device horizontal and vacuum the water off from top to bottom in straight lines.
4. Switch the device off when you have finished vacuuming.

Cleaning

Draining

1. Press the release **13** and pull the wipe and suction attachment **2** upward off the basic device **1**.
2. Pull the filter **3** off the basic device.
3. Turn the basic device upside down above a sink and let the dirty water run out.
4. Pull the water tank **9** off the device.
5. Pull the plug of the water tank out of the filling hole.
6. Drain the water tank completely.
7. Push the plug of the water tank into the filling hole.
8. Insert the water tank in the device.

Cleaning

1. Pull the wiper cover off of the **5** wipe and suction attachment **2**.
2. Wash the wiper cover under the tap with running warm water or in the washing machine at 40 °C without adding softeners.
3. Pull the water tank **9** off the device.
4. Pull out the plug of the water tank **17** and the wastewater tank **18** (see section "Filling the water tank"). Fill both tanks with hot water and close them.
Add a bit of descaler or vinegar for descaling and let it act for approx. 30 minutes.

5. Insert the water tank and press the spray trigger **12** several times.
Let the descaler act in the line for approx. 30 seconds.
6. Remove the water tank again.
7. Press the spray trigger until liquid no longer emerges from the spray nozzle **7**.
8. Shake the water tank vigorously and then empty the water tank and the wastewater tank.
9. Rinse both tanks with clear water and drain them completely.
10. Press the plugs into the filling holes of both tanks.
11. Wipe the housing of the device with a clean, slightly damp cloth.
12. Wipe the charger with a clean, dry cloth.
13. Allow all parts to dry completely.

Inspection

Regularly check the state of the device.

- Check the operating controls for damage.
- Check that the accessories are in perfect condition.

Do not operate a damaged device or accessory. Have the damaged device or accessory checked and repaired by an authorised service centre.

Storage

NOTE!

Risk of damage!

Improper storage of the device can result in damage.

- Allow the device to completely cool down.
- Place the device so that it can't fall into water.
- Store the device in a clean, dry, frost-protected place out of the reach of children.

1. Thoroughly clean the device (see "Cleaning").
2. Always store device parts and accessories together with the device.
3. If possible, pack the device in the original packaging.


Troubleshooting

| Problem | Possible cause | Troubleshooting |
|-----------------------------------|-----------------------------------|---|
| Device is not working. | The battery is discharged. | Charge the battery. |
| | The device is damaged. | Contact after sales support. |
| The spray function does not work. | The water tank 9 is empty. | Fill the water tank (see section "Filling the water tank"). |
| | The device is scaled. | Descale the device (see section "Cleaning"). |
| | The device is damaged. | Contact after sales support. |

Technical data

| | |
|-------------------------|----------------------|
| Model number: | 4115 |
| Item number: | 814014 |
| Total height: | approx. 33 cm |
| Battery specifications: | 3.7 V, 9 W, 1500 mAh |

Mains adapter / Charger:

| | |
|-------------------|--|
| Manufacturer: | Yuyaou Linshan Shuncheng Electrics Factory |
| Model: | KH6-050100AU |
| Input voltage: | 100-240 V~ |
| Input frequency: | 50/60 Hz |
| Output voltage: | 5 V === |
| Output current: | max. 200 mA |
| Protection class: | II  |
| IP rating: | IP20 |

Disposal

Disposing of packaging



Dispose of packaging according to type. Sort the paperboard and cardboard as waste paper and the film as recyclable material.

Dispose of old electrical device



Old electrical devices must not be disposed of as household waste!

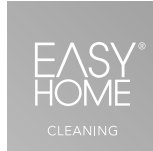
If the device cannot be used any more, each consumer **is obligated by law to dispose of old devices separately from household waste**, e.g. at a municipal/city district collection point. It is thereby ensured that old devices are professionally recycled and negative effects on the environment are avoided. Therefore, electrical devices are marked with the above symbol.



Batteries and rechargeable batteries must not go in domestic waste!

As a consumer you are legally obliged to dispose of all batteries, irrespective of whether they contain harmful substances* or not, at a collection point in your community/district or at a retail outlet, so that they can be disposed of in an environmentally friendly manner.

* marked with: Cd = Cadmium, Hg = Mercury, Pb = Lead, Li = Lithium.



Window Cleaner

Warranty Details

**REGISTER YOUR PURCHASE AT www.aldi.com.au/en/about-aldi/product-registration/
TO KEEP UP-TO-DATE WITH IMPORTANT PRODUCT INFORMATION**

This product is guaranteed to be free from defects in workmanship and parts for a period of 36 months from the date of purchase. Defects that occur within this warranty period, under normal use and care, will be repaired, replaced or refunded at our discretion. The benefits conferred by this warranty are in addition to all rights and remedies in respect of the product that the consumer has under the Competition and Consumer Act 2010 and similar state and territory laws.

Our goods come with guarantees that cannot be excluded under the Australian Consumer Law. You are entitled to a replacement or refund for a major failure and for compensation for any other reasonably foreseeable loss or damage. You are also entitled to have the goods repaired or replaced if the goods fail to be of acceptable quality and the failure does not amount to a major failure.

We strongly recommend that you retain the original packaging that your product came in for future safe transportation.

Please refer to your Warranty Certificate for further information.

AFTER SALES SUPPORT

☎ 1800 099 385

💻 customerservice@mann-noble.com





Window Cleaner

Repair and Refurbished Goods or Parts Notice

**REGISTER YOUR PURCHASE AT www.aldi.com.au/en/about-aldi/product-registration/
TO KEEP UP-TO-DATE WITH IMPORTANT PRODUCT INFORMATION**

Unfortunately, from time to time, faulty products are manufactured which need to be returned to the Supplier for repair.

Please be aware that if your product is capable of retaining user-generated data (such as files stored on a computer hard drive, telephone numbers stored on a mobile telephone, songs stored on a portable media player, games saved on a games console or files stored on a USB memory stick) during the process of repair, some or all of your stored data may be lost.

We recommend you save this data elsewhere prior to sending the product for repair.

You should also be aware that rather than repairing goods, we may replace them with refurbished goods of the same type or use refurbished parts in the repair process.

Please be assured though, refurbished parts or replacements are only used where they meet ALDI's stringent quality specifications.


If at any time you feel your repair is being handled unsatisfactorily, you may escalate your complaint. Please telephone us on 1800 099 385 or write to us at:

Mann & Noble Pty Ltd.

ABN 87 147 260 197, Unit 1, Southridge Unit Estate, 2 Southridge Street, Eastern Creek NSW 2766

1800 099 385 (Monday to Friday, 9am-6pm (EST) AEST)
customerservice@mann-noble.com

AFTER SALES SUPPORT

 1800 099 385

 customerservice@mann-noble.com

