

User Manual



HAND HELD STEAM CLEANER



ALDI guarantees that our exclusive brand products are developed to our stringent quality specifications. If you are not entirely satisfied with this product, please return it to the nearest ALDI store within 60 days from the date of purchase, for a full refund or replacement, or take advantage of our after sales support by calling the supplier's Customer Service Hotline.



Made in China

EASY® HOME is a registered trademark of ALDI Stores

DISTRIBUTED BY:

ALDI STORES

1 SARGENTS ROAD

MINCHINBURY NSW 2770

www.aldi.com.au

AFTER SALES SUPPORT

803301 

  1800 099 385

 customerservice@mann-noble.com

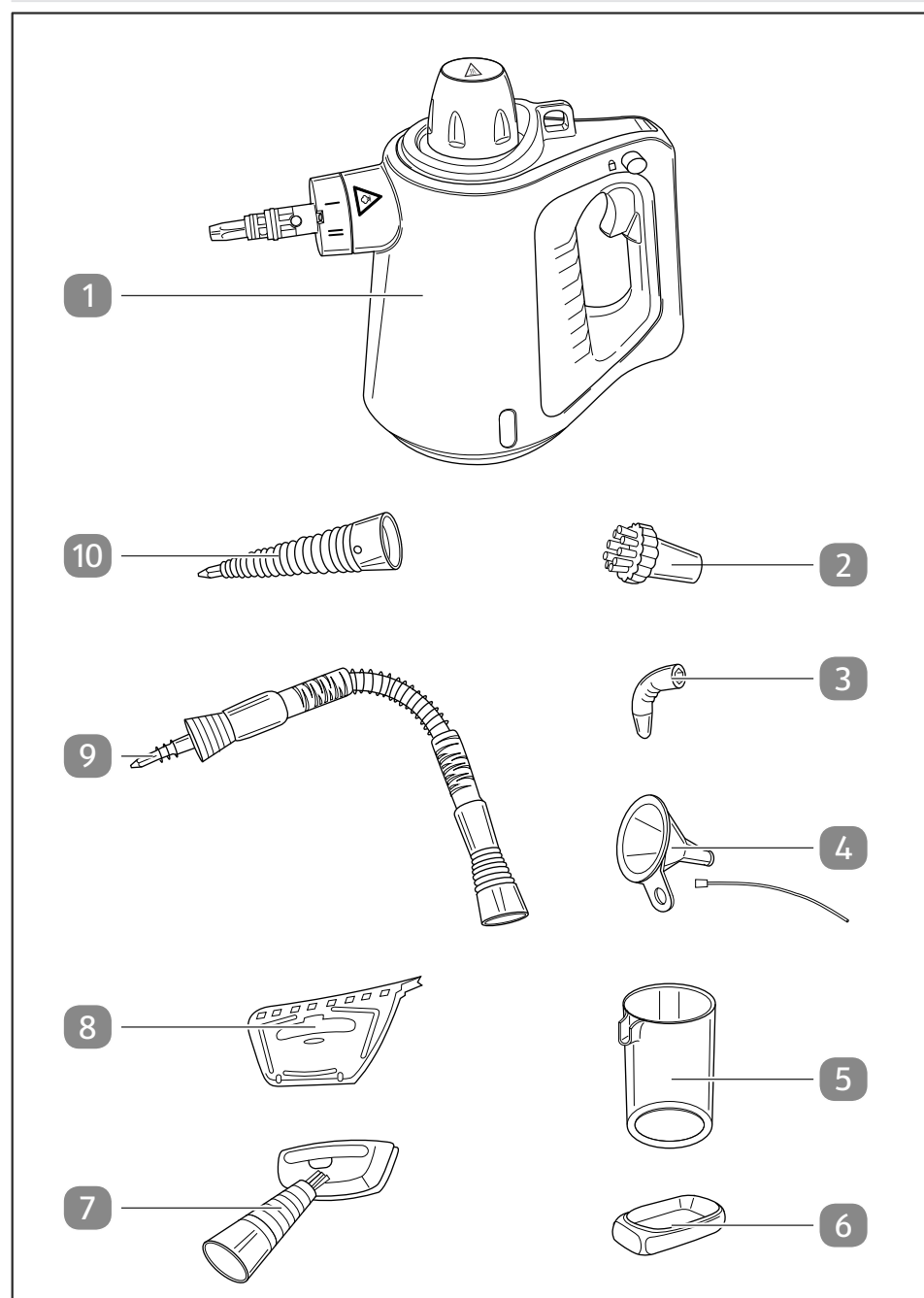
MODEL:
4137

01/2021

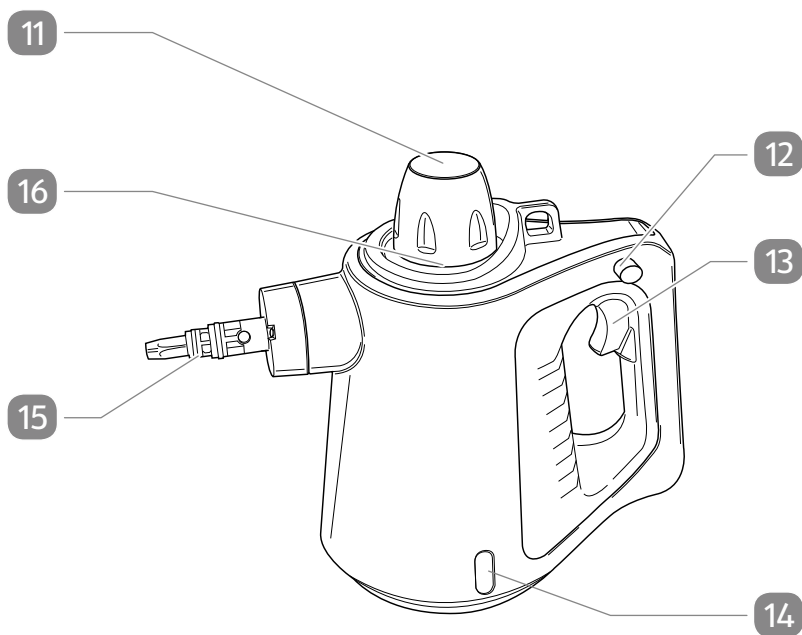
3
YEAR
WARRANTY

cod. 5215108000 rev. 0 - 11/09/20

Overview



A



Package contents/device parts

- 1 Hand Held Steam Cleaner
- 2 Round brush
- 3 Angled nozzle
- 4 Funnel / Extension
- 5 Measuring cup
- 6 Fabric cover
- 7 Textile brush
- 8 Glass cleaner
- 9 Flexible hose
- 10 Straight nozzle
- 11 Safety closure
- 12 Safety switch
- 13 Steam button
- 14 Indicator light
- 15 Steam nozzle
- 16 Fill opening

Table of content

Overview.....	2
Package contents/device parts.....	4
General information.....	6
Reading and storing the operating manual.....	6
Proper use.....	6
Explanation of symbols.....	7
Safety.....	8
Checking the steam cleaner and product contents.....	13
Operation.....	14
Filling/refilling water.....	14
Switching on the steam cleaner.....	15
Locking/unlocking the safety mechanism.....	16
Using the accessories.....	17
Using the flexible hose.....	18
Using the straight nozzle.....	18
Using the glass cleaner.....	19
Using the textile brush.....	19
Using the angled nozzle and round brush.....	19
Emptying the boiler after use.....	20
Cleaning and maintenance.....	20
Storage.....	21
Transport.....	21
Troubleshooting.....	22
Technical data.....	23
Disposal.....	23
Disposing of packaging.....	23
Disposing of old appliances.....	23

General information

Reading and storing the operating manual



This user manual accompanies this Hand Held Steam Cleaner (hereinafter referred to simply as “steam cleaner”). It contains important information about start-up and handling.

Before using the device, read the operating manual carefully, in particular the safety instructions. Failure to follow this operating manual may lead to severe injuries or product damage.

This user manual is based on the standards and regulations that are valid within the Australia. Outside the Australia, please also note the country-specific directives and laws.

Keep this operating manual for future reference. If you pass this device on to a third party, you must also supply this operating manual.

Proper use

The steam cleaner is only designed for removing dirt with steam. For example, it is suitable for cleaning the following areas: flat surfaces (e.g. worktops, slabs, tiles, windows or mirrors), areas which are difficult to access (e.g. corners, joints, blinds, toilets, taps) and textiles (e.g. curtains, upholstery, clothing and car seats). The steam cleaner is only intended for private use and is not suitable for commercial use. The steam cleaner is not intended for use outdoors nor with liquids other than water.

This device is intended for private use only and is not suitable for commercial use. Use the device only as described in this operating manual. Any other use is improper and may lead to product damage or even personal injury. This device is not a toy.

The manufacturer or retailer assume no liability for damage caused by improper or incorrect use.

Explanation of symbols

The following symbols and signal words are used in this user manual, on the device or on the packaging.



This symbol provides you with useful additional information on handling and use.



The “GS” (Tested Safety) certification mark confirms the device’s compliance with the German Product Safety Act (ProdSG for short).



The fabric cover is machine washable up to 60°C.



The fabric cover can be tumble dried at low temperature.



Do not iron the fabric cover.



Scalding hazard. This symbol warns against leaking steam. Observe the safety notes.



Warning of hot parts. The surfaces may heat up during operation.



Protection class I



WARNING:
Read the instructions before using the steam cleaner.

Safety

The following signal words are used in this operating manual.

WARNING!

This signal symbol/word denotes a hazard with an average risk level that could lead to death or severe injury if it is not avoided.

NOTE!

This signal word provides a warning about potential material damage.

Safety instructions

WARNING!

Risk of electric shock!

A faulty electrical installation or excessive mains voltage may result in an electric shock.

- Connect the steam cleaner only if the mains voltage of the socket corresponds to the nameplate specification.
- Only connect the steam cleaner to a properly installed socket with an earthing contact.
- Connect the steam cleaner to an easily accessible socket to allow the steam cleaner to be quickly disconnected from the mains supply in the event of a fault.
- Do not operate the steam cleaner if it is visibly damaged or if the mains cord or mains plug is defective.
- If the mains cord of the steam cleaner is damaged, to avoid risks it must be replaced by the manufacturer or its After Sales Support or by a person with similar qualifications.
- Do not open the housing; instead, have a qualified professional carry out repairs. Contact a qualified workshop for this. Liability and warranty claims are waived in the event of repairs performed by the user, improper connection or incorrect operation.
- Only parts that comply with the original device information may be used for repairs. This steam cleaner contains electrical

and mechanical parts which are essential for providing protection against sources of danger.

- Do not operate the steam cleaner with an external timer or separate telecontrol system.
- Only use splash-proof extension cables with a cross section of at least 3 mm².
- Do not immerse the steam cleaner, the mains cord or mains plug into water or other liquids.
- Never touch the mains plug with damp hands.
- Never pull the mains plug out of the socket by the mains cord; instead, always do so by taking hold of the mains plug.
- Never use the power cable as a carrying strap.
- Keep the steam cleaner, mains plug and mains cord away from open flames and hot surfaces.
- Lay the power cable so that it does not pose a tripping hazard.
- Do not kink the mains cord and do not lay it over sharp edges.
- Only use the steam cleaner indoors. Do not use it outdoors or in the rain.
- Do not use the steam cleaner in swimming pools that contain water.
- Never store the steam cleaner where there is a risk of it falling into a tub or a basin.
- Never reach to retrieve an electrical device if it has fallen in water. In such a case, immediately disconnect the mains plug from the socket.
- Make sure that children do not insert any objects into the steam cleaner.
- Never leave the steam cleaner unattended. Always pull the mains plug out of the socket after use or when work is interrupted. The appliance heats up and generates steam pressure all the time the mains plug is in the socket.

Explanation of symbols

- Pull the mains plug out of the socket before filling the steam cleaner with water, cleaning it or changing the accessories.
- Only pull the mains plug out of the socket if you are no longer using the steam cleaner or are carrying out maintenance work.
- Never direct the steam towards electrical appliances or equipment that contains electrical components, such as inside an oven.
- Do not point the vapour stream at the steam cleaner itself.
- Only use the steam cleaner with dry hands and never without shoes (not barefoot). This helps to reduce hazardous body currents in the event of a failure.
- Never point the steam cleaner towards objects that are sensitive to moisture.

WARNING!

Danger for children and persons with impaired physical, sensory or mental capacities (e.g. partially disabled persons, older persons with reduced physical and mental capacities) or lack of experience and knowledge (e.g. older children).

- The appliance is not to be used by persons (including children) with reduced physical, sensory or mental capabilities, or lack of experience and knowledge, unless they have been given supervision or instruction. Children should being supervised not to play with the appliance.
- The steam cleaner must not be used by children. Children must be supervised to make sure that they do not play with the steam cleaner.
- Keep children away from the steam cleaner and its connection cable while it is switched on or cooling down.
- Do not leave the steam cleaner unattended during operation.

- Do not let children play with the packaging film. Children may get caught in it when playing and suffocate.

⚠ WARNING!

Scalding hazard!

The steam cleaner releases hot steam during use. Parts of the steam cleaner become hot.

- Never remove the safety closure while you are using the steam cleaner.
- The safety closure can only be removed if the steam pressure in the boiler amounts to less than 0.3 bar (approx. 4.5 psi). After use, let the steam cleaner cool down before you empty the boiler or remove accessories.
- Do not touch the hot parts of the steam cleaner with bare fingers during operation. Clearly advise other users of the risks.
- Please keep in mind that hot steam may also be emitted from the steam cleaner once it has been turned off.

⚠ WARNING!

Risk of injury!

Improper use of the steam cleaner may cause injury.

- Only use the steam cleaner with the enclosed accessories and original replacement parts approved by the manufacturer.
- Allow any accessories used to cool down before removing them.
- Do not use the steam cleaner if it has been dropped, if there are clearly visible damages or if it is leaking.
- Do not attempt to steam harmful materials (e.g. asbestos) with the steam cleaner.

- Never point the steam cleaner at other persons or animals. Hot steam can cause serious injuries. Pay attention to your environment.
- Do not point the steam jet at yourself or other persons to clean clothing or footwear.
- During use, never tilt the steam cleaner more than 45° away from the upright position in order to prevent hot water from running out of the boiler.
- Never drink the water that has come out of the steam nozzle.

NOTE!

Risk of damage!

Improper handling of the steam cleaner may result in damage to the steam cleaner or to property.

- Test first on an inconspicuous spot to check if the material is suitable for being cleaned with a steam cleaner, e.g.:
 - Steam can bleach varnished wood or leather.
 - Unprotected wood can swell.
 - Steam can strip away protective wax coatings.
 - Plastics can film over with the effects of steam.
 - Soft plastics can deform with the effects of steam.
 - Cold glass or mirrored surfaces can crack with the effects of hot steam.
- If you want to clean windows, you will need to warm them up beforehand, e.g. by first applying steam to a large surface from a distance and then moving closer and closer whilst still applying the steam.
- Acrylic, velvet and silk are sensitive to steam, as well as plastic fibres.
- Ensure that the power cable does not come into contact with hot parts.
- Never expose the steam cleaner to high temperatures (heating, etc.) or bad weather (rain, etc.).

- Never fill the steam cleaner with any liquids other than water.
- Do not add any limescale removers, scents, alcohols or cleaners to the boiler as they could damage the steam cleaner.
- Never attempt to clean the steam cleaner by immersing it in water and do not use a steam cleaner to clean it. This could damage the steam cleaner.
- Never place the steam cleaner or the individual parts in the dishwasher. It would be destroyed as a result.
- Stop using the steam cleaner if its plastic parts are cracked, broken or deformed. Only replace damaged parts with corresponding original spare parts.
- Do not operate the steam cleaner with an empty boiler. Once the water has been used up, pull the mains plug out of the socket to avoid overheating.

Checking the steam cleaner and product contents

NOTE!

Risk of damage!

Take care when opening the packaging with a sharp knife or other sharp object as you may immediately damage the steam cleaner.

- Be very careful when opening.
 1. Remove the steam cleaner from the packaging.
 2. Check that the delivery is complete (see chapter "Scope of delivery/device components").
 3. Check whether the steam cleaner or the individual parts show signs of damage.
If this is the case, do not use the steam cleaner. Contact the manufacturer at the service address specified on the warranty card.

Operation

Filling/refilling water

WARNING!

Risk of electric shock!

Improper handling of the steam cleaner may result in an electric shock.

- Only unscrew the safety closure if the steam cleaner has been disconnected from the socket.

NOTE!

Risk of damage!

Improper handling of the steam cleaner may result in damage to the steam cleaner or to property.

- Do not pour any supplements or cleaning products into the boiler.



Make sure you pour approx. 175 ml of water into the boiler of the steam cleaner.



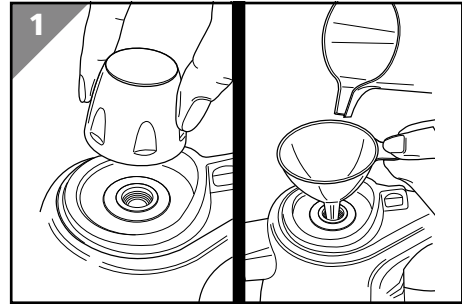
If there is no more water in the boiler, no steam will be released when pushing the steam button **13**.



The safety closure cannot be opened if the boiler is still under pressure.

Fill in water

1. Pull the mains plug out of the socket.
2. Open the safety closure **11**.
3. Fill the boiler with water through the filling opening **16**. Use the measuring cup **5** and funnel **4** supplied to help.
4. Close the safety closure again.

**Refill water**

1. Pull the mains plug out of the socket.
2. Push the steam button **13** until no more steam comes out.
3. Wait at least 5 minutes.
4. Open the safety closure **11** slowly and wait a few seconds until the hissing sound of the steam has stopped before unscrewing it completely.
5. Fill the boiler with water again. Use the measuring cup **5** and funnel **4** supplied to help.
6. Close the safety closure again.

It is recommended that you fill the steam cleaner with tap water or alternatively, for regions with very hard water, with 50 % demineralised water and 50 % tap water. Otherwise the steam cleaner can calcify prematurely and the steam nozzle **15** can clog up. You can enquire about the hardness of your tap water with your local waterworks.

Switching on the steam cleaner

⚠ WARNING!

Risk of injury!

Improper use of the steam cleaner may cause injury.

- Only press the steam button once the indicator light has gone out. Otherwise the steam cleaner can accumulate hot water that drips or sprays out of the steam nozzle. There is risk of scalding.
- The safety closure can only be removed if the steam pressure in the boiler amounts to less than 0.3 bar (approx. 4.5 psi).

After use, let the steam cleaner cool down before you empty the boiler or remove accessories.

NOTE!

Risk of damage!

Improper handling of the steam cleaner may result in damage to the steam cleaner or to property.

- Only switch on the steam cleaner if there is water in the boiler. Otherwise the steam cleaner can overheat.

1. Insert the mains plug in a socket.

The indicator light **14** will light up, signalling the connection to the mains supply.

The indicator light will go out as soon as the steam cleaner is ready for operation.

2. Unlock the safety switch **12** if necessary (see chapter “Locking/unlocking the safety mechanism”).
3. Push the steam button **13**.

Steam will come out of the steam nozzle **15**. When the surge of steam decreases, the indicator light illuminates. Let go of the steam button until the indicator light goes out again.





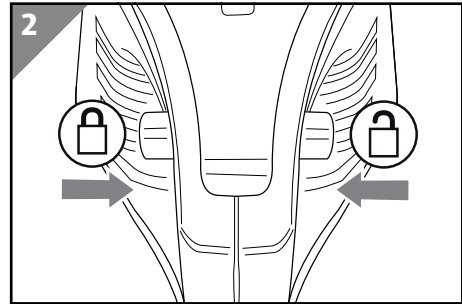
If water is dripping out of the steam nozzle during operation or the amount of steam being emitted decreases, let go of the steam button. The steam cleaner first needs to heat up again. In the meantime, the indicator light will switch on and off again. Wait until the indicator light goes out again.

The steam cleaner is equipped with overheating protection. It switches off automatically if it overheats (e.g. due to an empty boiler). If this is the case, pull the mains plug out of the socket and fill the boiler.

Locking/unlocking the safety mechanism

The steam cleaner is equipped with a safety mechanism.

- To lock the safety mechanism, push the safety switch **12** into the  position. The steam button **13** can now no longer be operated.
- To unlock the safety mechanism, push the safety switch into the  position. The steam button can now be operated again.



Using the accessories

The steam cleaner has multiple accessories for different cleaning applications:

Accessories	Cleaning application
Flexible hose 9	Use the flexible hose as an extension for the straight nozzle, the round brush, the angled nozzle, the textile brush or the glass cleaner.
Straight nozzle 10	Suitable for cleaning hard-to-reach areas or as an extension for the round brush or the angled nozzle.
Round brush 2	Suitable for cleaning the hubcaps of vehicles, water fittings or tile joints in kitchens or bathrooms etc.
Angled nozzle 3	Suitable for cleaning hard-to-reach corners, nooks and crannies, e.g. sinks and radiators.
Fabric cover 6	Suitable for cleaning sensitive surfaces, e.g. sofas and chairs (in combination with the textile brush).
Glass cleaner 8	Suitable for cleaning smooth surfaces, e.g. mirrors, windows and shower walls (in combination with the textile brush).
Textile brush 7	Suitable for cleaning fabrics, e.g. carpets.

WARNING!

Risk of injury!

Improper use of the steam cleaner may cause injury.

- Pull the mains plug out of the socket before applying/removing the attachment.

Using the accessories

- Wait until the steam cleaner has cooled down before applying/ removing the attachment.
- Wait until all the steam has been drained before applying/ removing the attachment.

For cleaning, you can either use the steam directly from the steam nozzle **15** or apply an attachment.

Do not use an attachment if you want to clean toilets and basins, taps and drains, windows, furniture fabrics, shutters or mirrors, etc. On smooth surfaces, you can simply remove the dirty water after cleaning using the glass cleaner **8**.



The closer the steam nozzle is to the surface you wish to clean, the better effect it has. When steam is emitted, the steam pressure and temperature are highest directly on the steam nozzle.

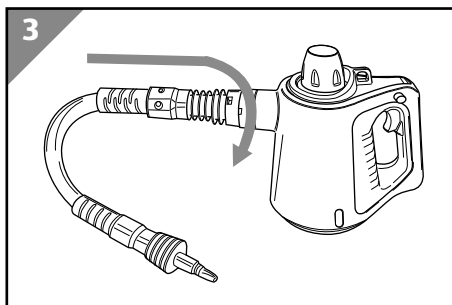
Stubborn dirt must be pre-soaked with water.

Using the flexible hose

1. Place the flexible hose **9** on the steam nozzle **15** up to the stop point.
2. Turn the flexible hose in the direction of the arrow until it is interlocked with the steam nozzle.

The flexible hose remains locked in this position.

3. The flexible hose can be removed in reverse order.

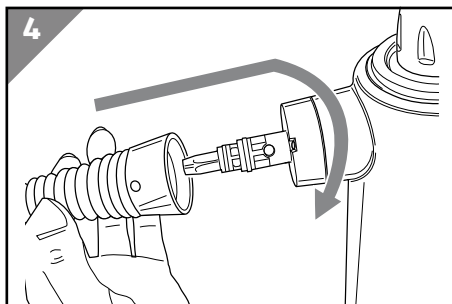


Using the straight nozzle

1. Place the straight nozzle **10** on the steam nozzle **15** up to the stop point.
2. Turn the straight nozzle in the direction of the arrow until it is interlocked with the steam nozzle.

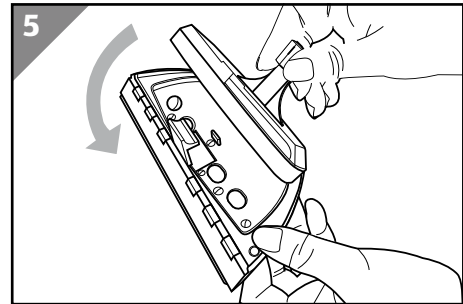
The straight nozzle remains locked in this position.

3. The straight nozzle can be removed in reverse order.



Using the glass cleaner

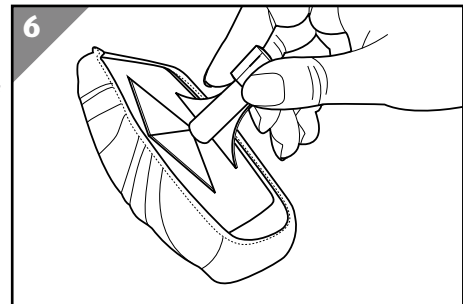
1. First place the textile brush **7** on the glass cleaner **8** using the two brackets.
2. Push the textile brush below the bracket of the glass cleaner.



Using the textile brush

1. Push the textile brush **7** onto the steam nozzle **15** up to the stop point.
2. Turn the textile brush in the direction of the arrow until it is interlocked with the steam nozzle. The textile brush remains locked in this position.

A fabric cover **6** is supplied for using the textile brush. This can be used for cleaning sensitive surfaces, such as sofas and chairs.



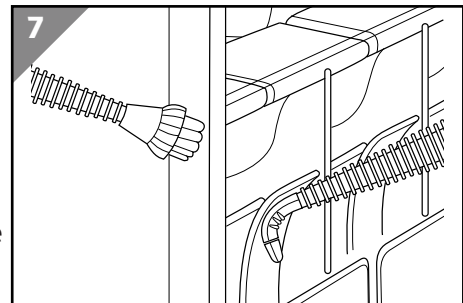
3. The textile brush can be removed in reverse order.

Using the angled nozzle and round brush

- Use the angled nozzle **3** for tight corners or joints or places that are difficult to reach.
- Use the round brush **2** for stubborn dirt, e.g. on wheel rims.

The two attachments can be fixed to both the straight nozzle **10** and the flexible hose **9**, or directly onto the steam nozzle **15**.

- Push the angled nozzle or round brush onto the steam nozzle up to the stop point.



Emptying the boiler after use

⚠ WARNING!

Risk of injury!

The steam cleaner is very hot after every use. The safety closure can only be removed if the steam pressure in the boiler amounts to less than 0.3 bar.

- After use, let the steam cleaner cool down before you empty the boiler.
- 1. Once you are done cleaning, pull the mains plug out of the socket.
- 2. Let the steam cleaner cool off completely.
- 3. Unscrew the safety closure **11**.
- 4. Pour the water out of the boiler.
- 5. Then screw the safety closure tight again.

Cleaning and maintenance

NOTE!

Risk of short circuit!

Water or other liquids that have penetrated the housing may cause a short circuit.

- Pull the mains plug out of the socket before cleaning or carrying out maintenance work on the steam cleaner.
- Never immerse the steam cleaner in water or other liquids.
- Never hold the steam cleaner under running water.
- Make sure that no water or other liquids penetrate the housing.

NOTE!**Risk of damage!**

Improper handling of the steam cleaner may result in damage to the steam cleaner.

- Do not use any aggressive cleaners, brushes with metal or nylon bristles or sharp or metallic cleaning utensils such as knives, hard scrapers and the like. They could damage the surfaces.
 - Never place the steam cleaner in the dishwasher. It would be destroyed as a result.
1. Before cleaning, pull the mains plug out of the socket.
 2. Let the steam cleaner cool off completely.
 3. Wipe the steam cleaner and the accessories with a damp cloth. Then let all parts dry completely.
 4. In case of stubborn stains, the removable fabric cover **6** can be cleaned according to the cleaning symbols on the label:
 - The fabric cover is machine washable up to 60°C.
 - The fabric cover can be tumble dried at low temperature.
 - The fabric cover must not be ironed.

Storage

All parts must be completely dry before being stored.

- Empty the boiler before storing.
- Always store the steam cleaner in a clean, dry, dust-free area.
- Ensure the steam cleaner is stored out of the reach of children and closed securely.

Transport

- If possible, use the original packaging for transport.
- Secure the steam cleaner to prevent it from slipping when transporting in a vehicle.

Troubleshooting

Problem	Possible cause	Troubleshooting
The steam cleaner is not working.	The mains plug is not in the socket.	Connect the steam cleaner to a socket.
	The boiler is empty.	Pour water into the boiler.
	The steam cleaner is damaged.	Please contact After Sales Support.
No steam is being emitted.	The boiler is empty.	Pour water into the boiler.
	The steam cleaner has not yet heated up.	Wait until the indicator light 14 goes out.
	The steam cleaner is damaged.	Please contact After Sales Support.
The indicator light 14 lights up and goes out again.	There is no fault: The temperature was briefly too low and then it heated up again.	
The amount of steam is decreasing.	The temperature is too low.	Wait until the steam cleaner has heated up again.
	There is too much water in the boiler.	Remove some water from the boiler.
Water is dripping out of the steam nozzle 15 .	The temperature is too low.	Wait until the steam cleaner has heated up again.
	There is too much water in the boiler.	Remove some water from the boiler.
The safety closure 11 cannot be opened.	The steam cleaner is too hot/the pressure in the boiler is too high.	<p>Pull the mains plug out of the socket.</p> <p>Push the steam button 13 until enough steam has escaped and the pressure in the boiler decreases.</p> <p>Wait at least 5 minutes.</p>
The steam button 13 cannot be pushed.	The safety mechanism is locked.	Unlock the safety mechanism (see chapter "Locking/unlocking the safety mechanism").

Technical data

Model:	4137
Article number:	803301
Supply voltage:	220–240 V~, 50–60 Hz
Output:	900–1 050 W
Protection class:	I
IP-Code:	IPX4
Boiler capacity:	250 ml
Maximum operating pressure:	3 bar (0,3 MPa)
Weight with accessories and without packaging:	1,6 kg
Dimensions (W × D × H):	285 × 145 × 225 mm

Disposal

Disposing of packaging



Dispose of packaging according to type. Sort the paperboard and cardboard as waste paper and the film as recyclable material.

Disposing of old appliances

- Should the steam cleaner no longer be capable of being used at some point in time, dispose of it in accordance with the regulations in force in your city or state.
- Please ensure your recycling information applies to the local regulations.



Hand Held Steam Cleaner

Warranty Details

REGISTER YOUR PURCHASE AT www.aldi.com.au/en/about-aldi/product-registration/
TO KEEP UP-TO-DATE WITH IMPORTANT PRODUCT INFORMATION

The product is guaranteed to be free from defects in workmanship and parts for a period of 36 months from the date of purchase. Defects that occur within this warranty period, under normal use and care, will be repaired, replaced or refunded at our discretion. The benefits conferred by this warranty are in addition to all rights and remedies in respect of the product that the consumer has under the Competition and Consumer Act 2010 and similar state and territory laws.

Our goods come with guarantees that cannot be excluded under the Australian Consumer Law. You are entitled to a replacement or refund for a major failure and for compensation for any other reasonably foreseeable loss or damage. You are also entitled to have the goods repaired or replaced if the goods fail to be of acceptable quality and the failure does not amount to a major failure.

AFTER SALES SUPPORT

☎ 1800 099 385

💻 customerservice@mann-noble.com





Hand Held Steam Cleaner

Repair and Refurbished Goods or Parts Notice

REGISTER YOUR PURCHASE AT www.aldi.com.au/en/about-aldi/product-registration/
TO KEEP UP-TO-DATE WITH IMPORTANT PRODUCT INFORMATION

Unfortunately, from time to time, faulty products are manufactured which need to be returned to the Supplier for repair.

Please be aware that if your product is capable of retaining user-generated data (such as files stored on a computer hard drive, telephone numbers stored on a mobile telephone, songs stored on a portable media player, games saved on a games console or files stored on a USB memory stick) during the process of repair, some or all of your stored data may be lost.

We recommend you save this data elsewhere prior to sending the product for repair.

You should also be aware that rather than repairing goods, we may replace them with refurbished goods of the same type or use refurbished parts in the repair process.

Please be assured though, refurbished parts or replacements are only used where they meet ALDI's stringent quality specifications.

If at any time you feel your repair is being handled unsatisfactorily, you may escalate your complaint. Please telephone us on 1800 099 385 or write to us at:

Mann & Noble Pty Ltd.

ABN 87 147 260 197


Unit 1, Southridge Unit Estate, 2 Southridge Street

Eastern Creek NSW 2766

1800 099 385 (Opening hours: 8 am–5 pm AEST)

customerservice@mann-noble.com

AFTER SALES SUPPORT

 1800 099 385

 customerservice@mann-noble.com

3

**YEAR
WARRANTY**