

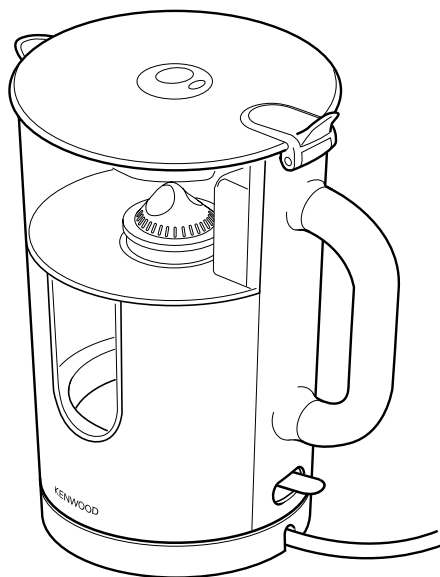


Kenwood Limited, New Lane, Havant, Hampshire PO9 2NH, UK
www.kenwoodworld.com

57475/1

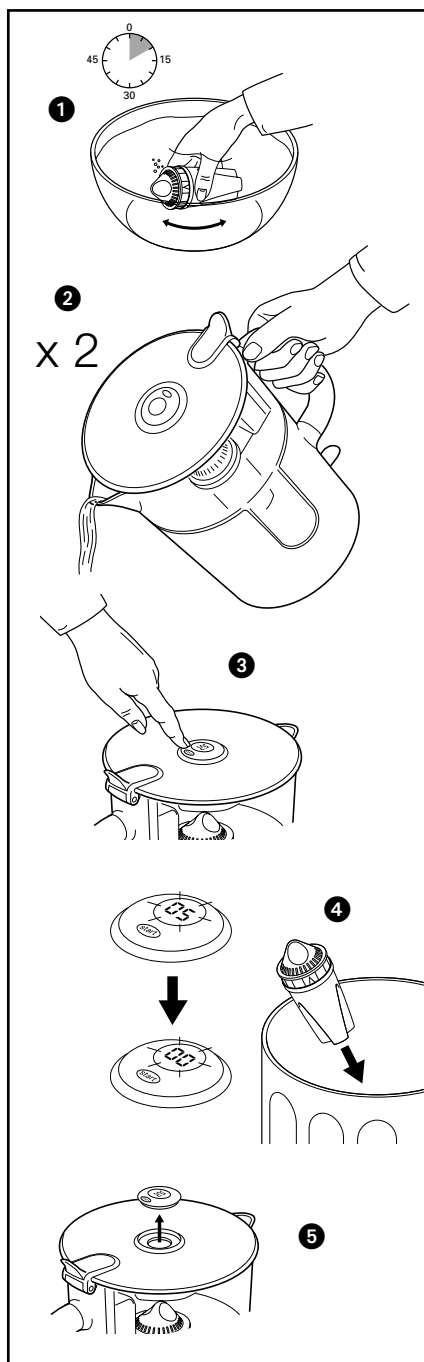
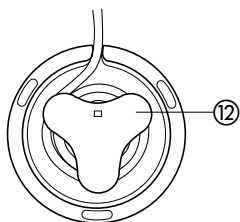
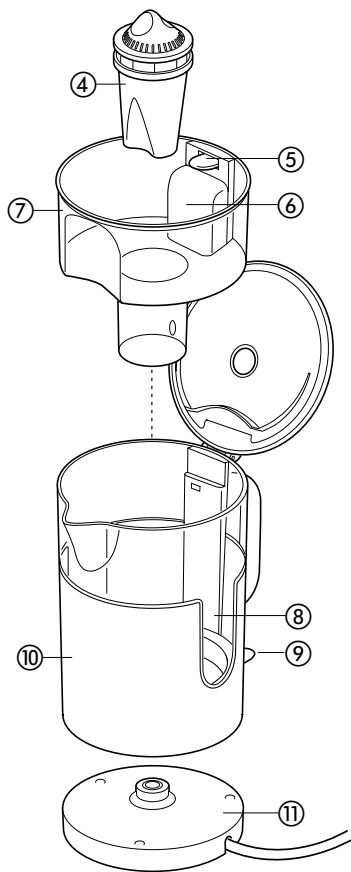
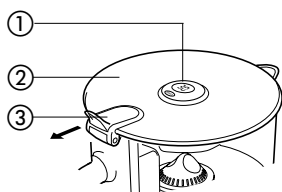
KENWOOD

puresse



WK970 series

WK990 series



before using your Kenwood appliance

- Read these instructions carefully and retain for future reference.
- Remove all packaging and any labels.

safety

- **Never overfill** - boiling water may splash out or the kettle may not operate.
- Take care not to immerse the base of the kettle in water when filling from the tap.
- Avoid contact with steam coming out of the spout area when pouring and out of the lid when refilling.
- Never let the cord hang down where a child could grab it.
- **Always unplug your kettle when not in use.**
- Never put the kettle, powerbase, cord or plug in liquid.
- Never use a damaged appliance. Get it checked or repaired: see 'service'.
- **Caution:** Do not operate the kettle on an inclined surface.
- Only use the powerbase supplied and keep it clean and dry.
- Make sure the lid is secure before switching the kettle on.
- **Warning:** Do not open the lid while the water is boiling.
- Make sure the kettle is switched off before lifting or pouring.
- Remove the kettle from the powerbase before filling or pouring.
- Never put the kettle near or on cooker hot plates or gas burners and keep out of direct sunlight.
- Do not let infirm people use the appliance without supervision.
- Do not let children use or play with the appliance.
- Only use the appliance for its intended domestic use. Kenwood will not accept any liability if the appliance is subject to improper use, or failure to comply with these instructions.

cartridge

IMPORTANT NOTES

Always treat the filtered water as a "food stuff" and follow the hygiene guidelines below:

- Always wash your hands before handling the unwrapped filter cartridges, especially if you have been preparing raw food such as meat or poultry.

- Consume filtered water immediately. Discard any unused filtered water after 24 hours.
- The filter is for treating cold mains tap water only.
- During prolonged period of non use (eg holiday), any unwrapped or partly-used cartridges should be stored in the refrigerator.
- If the filter has not been used for 48 hours, flush the cartridge through by filling the hopper twice and discarding the water.
- For hygiene reasons and regardless of usage always change the cartridge every 30 days.
- Like tap water, filtered water should be boiled and cooled before being given to babies and young infants.
- Always check the date code on the cartridge wrapper. If past the use by date, discard.
- Do not store the cartridges next to household chemicals or cleaning products.
- In the event of your water supplier issuing a "boil notice" (or similar emergency indicating that your water supply may be temporarily unsafe) the filter system should not be used, and any cartridge in use should be disposed of.

before plugging in

- Make sure your electricity supply is the same as the one shown on the underside of your kettle.

Important – UK only

- The wires in the cord are coloured as follows:
Green and Yellow = Earth,
Blue = Neutral,
Brown = Live.
- The appliance must be protected by a 13A approved (BS1362) fuse.
- **WARNING: THIS APPLIANCE MUST BE EARTHED.**

Note:

- For non-rewireable plugs the fuse cover **MUST** be refitted when replacing the fuse. If the fuse cover is lost then the plug must not be used until a replacement can be obtained. The correct fuse cover is identified by colour and a replacement may be obtained from your Kenwood Authorised Repairer (see Service).
- If a non-rewireable plug is cut off it must be **DESTROYED IMMEDIATELY**. An electric shock hazard may arise if an unwanted non-rewireable plug is inadvertently inserted into a 13A socket outlet.
- This kettle complies with European Economic Community Directive 89/336/EEC.

before using for the first time

- Wrap any excess cord around the underside of the powerbase.
- Fit the hopper ⑦. **Your water filter kettle will not operate without the hopper fitted.**

key

- ① 30 day cartridge life indicator
- ② flip top lid
- ③ lid release
- ④ cartridge
- ⑤ hopper release lever
- ⑥ Aquaflow sensor
- ⑦ hopper - 1L max
- ⑧ water level indicators - 1.2L max
- ⑨ dual action on/off switch with indicator light
- ⑩ kettle body
- ⑪ 360° powerbase
- ⑫ cord wrap

preparing the cartridge

- 1 Remove wrapper and immerse the cartridge in cold water. Gently agitate the cartridge until the air bubbles cease and leave to soak for 10 minutes ①.
- 2 Open the flip top lid and insert the cartridge into the hopper and press gently to seal.
- 3 Fill the hopper from the tap and allow the water to filter. Discard the filtered water ②. Repeat.
- 4 To set the cartridge life indicator press and hold the button until (30) appears on the display ③.
- 5 The display will countdown automatically. When the display reaches '05' the display will start flashing until it reaches '00' to indicate that the cartridge should be changed ④. **If the display is blank, repeat step 4.**

to use your water filter jug kettle

- 1 Open the flip top lid and fill the hopper. Never fill the kettle or hopper above the maximum mark - kettle 1.2 litre and hopper 1 litre. Minimum amount of water for boiling 500mls.
- The kettle is designed to filter and boil water at the same time, to take advantage of the "Aquaflow" technology, fill and boil a maximum of 1 litre at a time. If you intend to filter and boil more than 1 litre, allow the water to filter through the cartridge first and then switch on to boil the water.

- To improve the quality of your drinks always use fresh water.
- Empty the kettle after each use.
- 2 Check the lid is closed.
- 3 Plug in and switch on. The kettle will automatically filter the water and then switch to boiling.
- During filtering the indicator light will glow blue.
- During boiling the indicator light will glow orange.
- 4 Your kettle will boil and switch off automatically. To re-boil, wait a few seconds - the on/off switch needs time to reset.
- If you find drops of water under your kettle, don't worry - it is just condensation.
- **Even though your kettle is fitted with a water filter cartridge if you experience problems with your kettle switching on and off during use or switching off before boiling, check that the flat element is free from scale - see "descaling". If descaling does not solve the problem contact Kenwood customer care.**
- boil-dry protection**
- If you switch on with too little water, your kettle will cut out automatically. Switch off, remove from the powerbase and let it cool down before re-filling. When it has cooled down, the switch will reset itself.

care and cleaning

- Before cleaning, unplug your kettle and let it cool down.
- the outside and powerbase**
- Wipe with a damp cloth, then dry. Do not use abrasives - they will scratch the plastic surfaces.
- cartridge life indicator**
- **When not in regular use**, the display can be switched off to prolong the battery life. Press and hold the button until the display disappears. The unit can then be stored.
- hopper**
- Lift the hopper out using the hopper release lever ⑤.
- Wash in warm soapy water, rinse and dry.
- **Do not place the hopper in the dishwasher.**
- Do not use abrasive cleaners.

descaling

- Even though your kettle is fitted with a water filter cartridge descaling of the flat element may on occasion be required to maintain the performance of your kettle. If the kettle is not descaled regularly the build up of limescale may result in the following:
 - problems may be experienced with the kettle switching on and off during use or switching off before boiling.
 - the kettle may take longer to boil.
 - the flat element may be damaged.

Please note: failure to descale your kettle may invalidate your guarantee.

- When limescale starts to build up on the heating element, buy a suitable descaler and descale your kettle. After descaling, boil with fresh water several times and discard. Clean any descaler off the kettle - it can damage the parts.

service and customer care

- If the cord is damaged it must, for safety reasons, be replaced by KENWOOD or an authorised KENWOOD repairer.
- The cartridge life indicator is sealed for life. When the life indicator has reached the end of its useful life, please unclip ⑤ and dispose of it separately according to local recycling recommendations for the disposal of batteries. Contact spares and attachments for a replacement.

UK

If you need help with:

- using your kettle
 - servicing or repairs (in or out of guarantee)
- ☎ call Kenwood customer care on **023 9239 2333**.

Have your model number and date code

ready - it is located on the underside of your kettle and powerbase.

EXAMPLE



● spares and attachments

☎ call 0870 2413653.

other countries

- Contact the shop where you bought your kettle.

guarantee (UK only)

If your kettle goes wrong within one year from the date you bought it, we will repair or replace it free of charge provided:

- you have not misused, neglected or damaged it;
- it has not been modified (unless by Kenwood);
- it is not second-hand;
- it has not been used commercially;
- you have not fitted a plug incorrectly; and
- **you supply your receipt to show when you bought it.**

This guarantee does not affect your statutory rights.

children and burns or scalds

advice from the British Burn Association

Every year, 30,000 children go to hospital with burns.

What might be a minor burn for an adult could horrifically injure - or even kill - a child.

take these precautions

- Keep hot drinks out of children's reach.
- Don't drink while holding your baby. If you're passing someone a drink, make sure a child isn't underneath.
- Keep your kettle, and its cord, well back from the worktop edge so that children can't grab them.
- Keep children away from the kitchen work area.
- For baby's bath, run the cold water first, then add the hot. Mix well and test the temperature with your elbow before you put baby in.
- Teach children about hot things.

run cold water over a burn immediately, then get medical help. Don't stop to remove clothing.

kettle trouble shooting guide

problem	possible cause	solution
Kettle does not switch on (no indicator light)	No power	Check power to kettle
	Hopper not fitted	The kettle will not operate without the hopper fitted.
	Fuse blown	Check the fuse/circuit breaker for your installation and replace the fuse if necessary.
No filtering (indicator light glowing blue)	Airlock in cartridge	Remove cartridge and repeat step 1 in "preparing the cartridge" section.
	Kettle overfilled	Do not fill above the kettle or hopper Max mark. Pour off excess water.
Kettle not boiling (indicator light not glowing orange)	Filtering not complete	The kettle will not switch to boiling mode until the hopper is empty.
	Aquaflow sensor ⑥ not operating	Carefully remove hopper and gently tap sensor area.
Kettle switching off early/not boiling	Scale on element	See descaling section
Kettle switching off after a few seconds	No water added/boil dry activated	Minimum amount of water for boiling 500mls. Allow to cool and follow instruction under boil dry protection.

cartridge trouble shooting guide

question	answer
The cartridge is damp and there is moisture in the bag. Is this normal?	Yes
Why do you need to soak the cartridges?	The cartridge contains a filtration medium that needs to be kept moist to do its job effectively. The plastic wrapper helps to retain the moisture during transit, but to ensure the cartridge works effectively it needs to be soaked for 10 minutes before use.
Why should the water be used straight away?	Like any foodstuff, water is a perishable product. Filtering removes chlorine, which is used to sterilise the water, thus reducing the shelf life of the filtered water. Any unused filtered water should be discarded after 24hours.
Why does the cartridge only last for 30 days?	For hygiene reasons the cartridge should be changed every 30 days regardless of usage.
Why is the water sometimes tinted black/blue when first used?	On occasions when using a new cartridge the first few litres can appear to be tinted black/blue. This colour is due to a small amount of carbon dust being flushed out of the cartridge. This is not harmful as the carbon is food grade and will usually disappear if the cartridge is flushed through a couple of times.
What is inside the cartridge?	The cartridge has mesh filters top and bottom, which trap fine particles. A special food grade resin removes heavy metals and limescale. Activated carbon removes chlorine and some organic pollutants.
Is filtered water suitable for those on a low sodium diet?	Yes
Is filtered water suitable for babies?	Yes, filtered water is suitable for babies and making up baby formula. However like tap water, it must be boiled and cooled before being given to babies and infants.