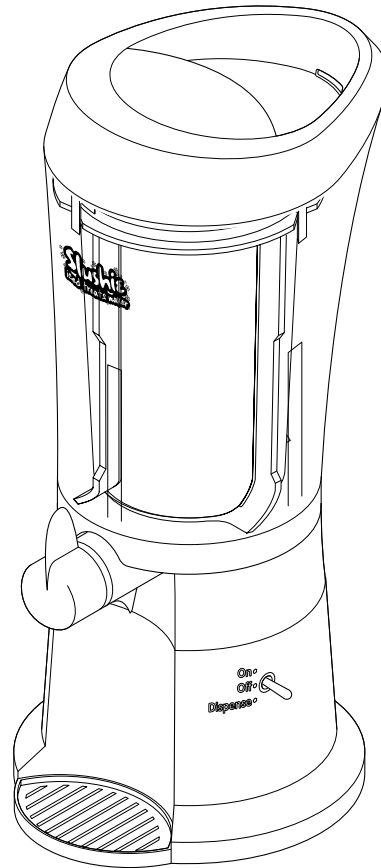
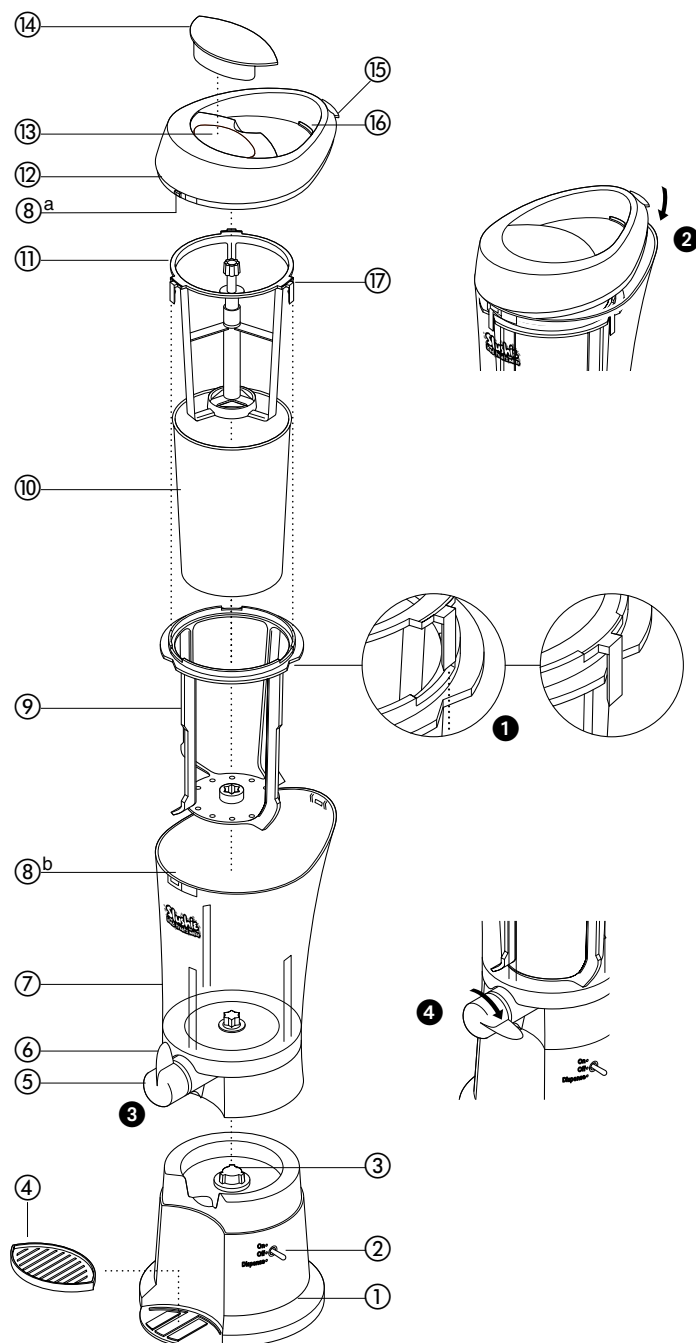


KENWOOD





**before using your Kenwood
appliance**

safety

- **Switch off and unplug:**
 - **before fitting and removing parts**

- This appliance is not intended for use by persons (including children) with reduced physical, sensory or mental capabilities, or lack of experience and knowledge, unless they have been given supervision or instruction concerning use of the appliance by a person responsible for their safety.

before plugging in

Important – UK only

Note:

- If a non-rewireable plug is cut off it must be DESTROYED IMMEDIATELY. An electric shock hazard may arise if an unwanted non-rewireable pug is inadvertently inserted into a 13A socket outlet.

before using your slushie maker for the first time

- Wash the parts and ensure they are thoroughly dry (see care and cleaning).

key

- ① Power unit
- ② On/Off/Dispense switch
- ③ Drive shaft
- ④ Drip tray
- ⑤ Tap
- ⑥ Tap handle
- ⑦ Slushie container
- ⑧^a Locking tab / ⑧^b Locking notch
- ⑨ Slushie paddle
- ⑩ Ice bowl
- ⑪ Ice paddle
- ⑫ Lid
- ⑬ Ice/Salt inlet chute
- ⑭ Ice/Salt inlet cap
- ⑮ Locking clip
- ⑯ Liquid inlet
- ⑰ Ice paddle locking tabs (x3)

assembling your slushie maker

1. Fit the slushie container ⑦ onto the power unit ①.
2. Insert the ice bowl ⑩ into the slushie paddle ⑨.
3. Insert the ice paddle ⑪ into the ice bowl by lining the ice paddle locking tabs ① up with the grooves on the slushie paddle and clip into place. Ensure all three locking tabs are fully locked down into place. You will hear three audible clicks when fitted correctly.
4. Fit the ice bowl assembly inside the slushie container making sure the ice bowl assembly sits flush onto the drive shaft inside the slushie container.
5. Fit the lid ⑫ by fitting the front locking tab ⑧^a onto the locking notch ⑧^b on the slushie container first and then snap the locking clip

⑮ down into the notch at the back of the slushie container ②.

- The appliance won't work properly if parts are fitted incorrectly.

using your slushie maker

- Do not exceed the MAX capacity (1 litre).
 - **Always add caster sugar to the slushie mixture (see advised quantities below).**
 - **Only use rock salt in the Slushie Maker (see advised quantities below).**
1. **Check that the tap handle ⑥ is in the closed (vertical) position ③.**
 2. Turn the On/Off/Dispense switch ② to the 'ON' position. The ice paddle and slushie paddle will rotate.
 - Note: The appliance must be switched on **before** adding the ice, salt and slushie mixture to prevent the slushie mixture immediately freezing on the outside of the ice bowl.
 3. Remove the cap ⑭ and pour through the ice/salt inlet chute ⑬ 60mls of water.
 4. Add through the ice/salt inlet chute approximately 200g ice cubes and then 1 cap full of rock salt.
 5. Repeat step 4 above, so that the ice and salt are layered together. Re-fit the cap.
 6. In a jug, mix together approximately 50g caster sugar (per litre) to your chosen slushie mixture (e.g. fruit juice) and slowly pour the slushie mixture through the liquid inlet ⑯ at the back of the lid. For smaller quantities of slushie mixture reduce the sugar pro-rata.
 7. After approximately 5 minutes add a further 200g ice and 1 cap full of rock salt through the ice/salt inlet chute.

8. Allow the Slushie Maker to operate until the desired consistency is reached, this will take approximately 15 minutes. When you can see the slushie mixture forming 'peaks' the slushie should be ready.
 - Do not turn the On/Off/Dispense switch to the 'OFF' position during this time as the mixture may freeze in contact with the ice bowl and prevent movement of the slushie paddle.
 - The time taken to reach the desired consistency depends on the amount of salt and ice added to the ice bowl as well as the consistency and sugar content of the slushie mixture. Slushie mixtures with higher sugar contents will reach the desired slushie consistency quicker than those with lower sugar levels.
- 9 To dispense, place a glass under the tap ensuring it is properly positioned under the whole tap area.
- 10 Then turn the On/Off/Dispense switch to the 'DISPENSE' position and turn the tap handle to the open (horizontal) position ④. The slushie mixture will pour into the glass. If the slushie is too thick to dispense, turn the On/Off/Dispense switch to the 'OFF' position, disconnect the appliance from the power supply and turn the tap to the closed (vertical) position. You can then remove the ice bowl assembly from the slushie container and pour the slushie out of the slushie container.
 - Note: in the 'DISPENSE' position the slushie paddle changes rotating direction.
11. When you have finished dispensing your slushie turn the tap handle to the closed (vertical) position and the On/Off/Dispense switch to the 'OFF' position.

important

- The maximum capacity of the Slushie Maker is 1 litre. To ensure that the ice and salt mix does not contaminate the slushie mixture you must not exceed the MAX mark on the slushie container or fill the ice/salt container higher than 1 inch from the top rim.
- **Always add caster sugar to the slushie mixture.** Caster sugar should be used as it dissolves more easily in the slushie mixture. Sugar assists the slushie making process (see advised quantities).
- **Only rock salt may be used in the Slushie Maker (see advised quantities).**
- **The Slushie Maker should only be used to make slushies with fruit juices.**
- Do not use the Slushie Maker to make slushies from liquids with low sugar (for example, water) as this can damage the appliance due to the water freezing very quickly to the outside of the ice bowl. Do not use the Slushie maker to make slushies from carbonated drinks or low sugar/diet drinks.
- Don't put dry ingredients into the Slushie Maker. Always use liquid ingredients – not frozen or stiff ingredients such as whipped cream.
- Do not use the slushie container or ice bowl as storage containers. Keep them empty before and after use.
- Do not operate for longer than required and do not exceed 40 minutes running time. If the desired consistency has not been reached or the slushie mixture has thawed turn off the Slushie Maker and discard the ingredients. See trouble shooting guide.
- Consume slushies straight away.

- Do not use sharp utensils inside the slushie container or ice bowl. Rubber spatulas or wooden spoons can be used when the 'On/Off/Dispense' switch is in the 'OFF' position and the appliance is unplugged.
- For best results always refrigerate ingredients for the slushie mixture before using.
- If adding alcohol to your slushie mixture it should be added at the end of the slushie making process as alcohol inhibits the freezing process.

hints & tips

- Some liquids increase in volume and froth during mixing, so do not overfill and ensure the lid is correctly fitted.

trouble shooting guide

problem	possible cause	solution
<ul style="list-style-type: none"> ● Slushie mixture has not reached desired consistency 	<ul style="list-style-type: none"> ● Ice bowl was not cold enough 	<ul style="list-style-type: none"> ● Add more ice and salt to the ice bowl (see advised quantities)
	<ul style="list-style-type: none"> ● The slushie mixture was too warm 	<ul style="list-style-type: none"> ● Refrigerate slushie mixture ingredients before using
	<ul style="list-style-type: none"> ● Alcohol was added to the slushie mixture too early 	<ul style="list-style-type: none"> ● Add alcohol in the last few minutes
	<ul style="list-style-type: none"> ● Not enough sugar added to the slushie mixture 	<ul style="list-style-type: none"> ● Add more sugar to slushie mixture
<ul style="list-style-type: none"> ● A knocking sound during the slushie making process 	<ul style="list-style-type: none"> ● A thick layer of ice has formed on the outside of the ice bowl that interferes with the slushie paddle rotating due to there not being enough sugar added to the slushie mixture. 	<ul style="list-style-type: none"> ● Add more sugar to slushie mixture.

care & cleaning

- Switch off, unplug and dismantle before cleaning.
- **Do not immerse the appliance, cord or plug in water or any other liquid.**
- **Don't wash parts in the dishwasher.**
- Always wash immediately after use.
- All parts (except for the power unit) wash by hand with warm soapy water, rinse with clean water and then thoroughly dry.
- Do not use abrasive or scouring detergents/powders, scouring pads, steel wool or hard/metal implements.

power unit (& drive shaft)

- Wipe with a damp cloth, then dry.

ice bowl, slushie paddle & ice paddle

- Remove the lid from the slushie container then remove the ice bowl assembly from the slushie container and discard the ice and salt mix.
- Taking care, lift the tabs of the ice paddle up and lift the ice paddle out from the ice bowl. Then lift the ice bowl out of the slushie paddle.

slushie container & tap

- Remove the slushie container from the power unit.
- Make sure the tap is in the open (horizontal) position ④ when washing to allow water to flow through.
- You can use a small flexible bottle brush to clean the inside of the tap.

service and customer care

- If the cord is damaged it must, for safety reasons, be replaced by KENWOOD or an authorised KENWOOD repairer.

UK

If you need help with:

- using your appliance or
- servicing or repairs (in or out of guarantee)

☎ call Kenwood customer care on

023 9239 2333. Have your model number ready – it's on the underside of the appliance.

● spares and attachments

☎ call 0870 2413653.

● other countries

Contact the shop where you bought your appliance.

guarantee (UK only)

If your appliance goes wrong within one year from the date you bought it, we will repair or replace it free of charge provided:

- you have not misused, neglected or damaged it;
- it has not been modified (unless by Kenwood);
- it is not second-hand;
- it has not been used commercially;
- you have not fitted a plug incorrectly; and
- **you supply your receipt to show when you bought it.**

This guarantee does not affect your statutory rights.