

Ariete



Blender

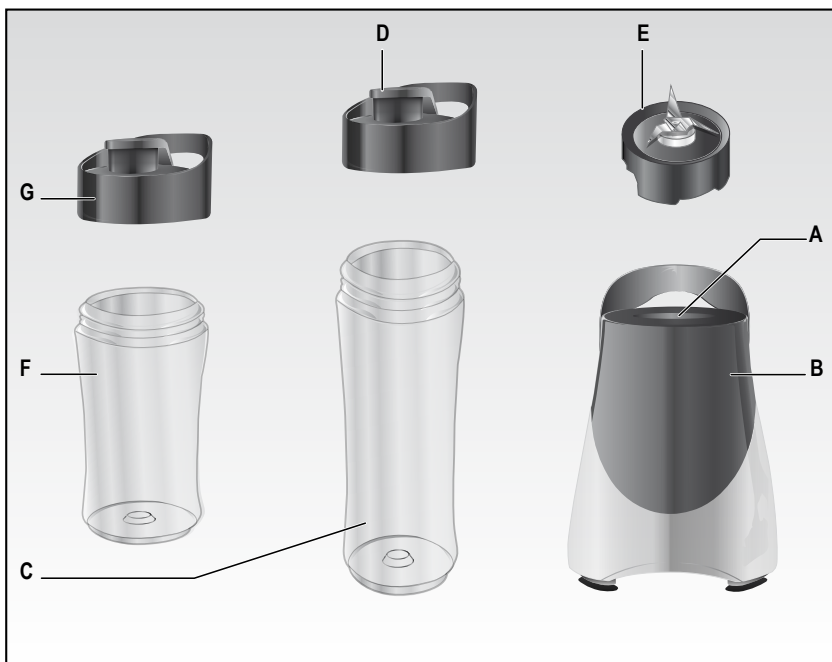


Fig. 1

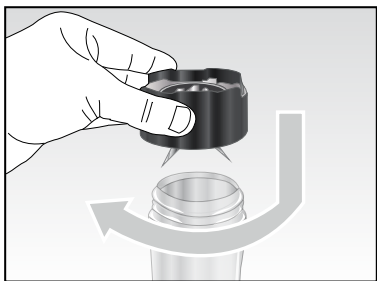


Fig. 2

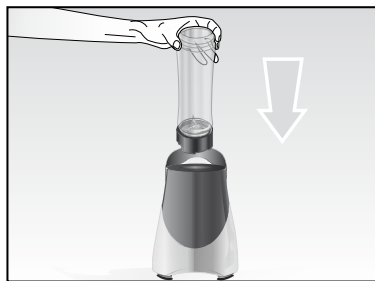


Fig. 3



Fig. 4



Fig. 5

IMPORTANT SAFEGUARDS

READ THESE INSTRUCTIONS BEFORE USE

The necessary precautions must be taken when using electrical appliances, and these include the following:

1. Make sure that the voltage on the appliance rating plate corresponds to that of the mains electricity.
2. Never leave the appliance unattended when connected to the power supply; unplug it after every use.
3. Never place the appliance on or close to sources of heat.
4. Always place the appliance on a flat, level surface during use.
5. Never leave the appliance exposed to the elements (rain, sun, etc....).
6. Make sure that the power cord does not come into contact with hot surfaces.
7. This appliance can be used by children aged from 8 years and above and persons with reduced physical, sensory or mental capabilities or lack of experience and knowledge only if they have been given supervision or instruction concerning use of the appliance in a safe way and understand the hazards involved. Do not allow children to play with the appliance. Cleaning and user maintenance must not be carried out by children unless they are older than 8 and supervised.
8. Children under age 8 should not be allowed to handle appliance and its power cord which must be kept out of their reach.
9. Never place the appliance body, plug or power cord in water or other liquids; always wipe clean with a damp cloth.
10. Always unplug the power cord from the electricity mains before fitting or removing single attachments or before cleaning the appliance.
11. Always make sure that your hands are thoroughly dry before using or adjusting the switches on the appliance, or before touching the power plug or power connections.
12. To unplug the appliance, grip the plug and remove it directly from the power socket. Never pull the power cord to unplug the appliance.
13. Do not use the appliance if the power cord or plug are damaged or if the appliance itself is faulty; all repairs, including substitution of power cord, must be carried out exclusively by an Ariete assistance centre or by authorized Ariete technicians in order to avoid all risks.
14. In case of using extension leads, these must be suitable for the appliance power to avoid danger to the operator and for the safety of the environment in which the appliance is being used. Extension leads, if not suitable, can cause operating anomalies.
15. Never allow the cord to dangle in places where it may be grabbed by a child.
16. Do not threaten the safety of the appliance by using parts that are not original or which have not been approved by the manufacturer.
17. Any changes to this product that have not been expressly authorised by the manufacturer may lead to the user's guarantee being rendered null and void.
18. In the event that you decide to dispose of the appliance, we advise you to make it inoperative by cutting off the power cord. We also recommend that any parts that could be dangerous be rendered harmless, especially for children, who may play with the appliance or its parts.
19. Packaging must never be left within the reach of children since it is potentially dangerous.

20. NEVER TOUCH MOVING PARTS.
21. The blades are sharp; take great care while emptying the container and when cleaning.
22. Never operate the appliance while it is empty.
23. Do not use the appliance if the blade is damaged.
24. Do not use the appliance to chop foods that are excessively hard (e.g., meat on the bone).
25. When crushing ice cubes, there must be at least one cupful of liquid in the mixing beaker. Ice cubes must never be crushed without liquid as this will damage the blender.
26. Leave hot liquids to cool before pouring them into the container.
27. PREPARE THE CONTAINER CORRECTLY WITH THE FOODS TO BE BLENDED AND THE BLADE SET BEFORE CLOSING IT AND FITTING IT TO THE POWER BASE.
28. Before removing the container with the blade set from the power base, wait for the blade to stop moving completely.

DO NOT THROW AWAY THESE INSTRUCTIONS

DESCRIPTION OF PARTS (Fig. 1)

- A Container slot
- B Power base
- C Container (capacity: 570 ml)
- D Drink lid
- E Blade set
- F Small container (capacity: 400 ml)
- G Drink lid for small container

This appliance has been designed for HOME USE ONLY and must not be used for commercial and industrial purposes.

This appliance complies with the Directive 2014/35/EU and EMC 2014/30/EU, and to the (EC) regulation No. 1935/2004 dated 27/10/2004 for materials in contact with food.

This appliance is intended to be used in household and similar applications such as:

- staff kitchen areas in shops, offices and other working environments;
- farm houses;
- by clients in hotels, motels and other residential type environments;
- bed and breakfast type environments.

INSTRUCTIONS FOR USE

IMPORTANT NOTE:

Before using the appliance, we recommend washing all removable parts that will come into contact with food. Use hot water, a cloth and a mild detergent. Dry thoroughly.

- Place the container (C or F) on a flat, horizontal surface with the opening facing upwards and pour in the ingredients you wish to use, cutting them into small pieces, if necessary and without exceeding the maximum level mark on the container itself.
- Place the blade set (E) on the opening of the container (C or F) and turn it clockwise until it locks into place (Fig. 2).
- Turn the container (C or F) upside down and place it in the slot (A) on the power base (B) by inserting the nicks on the blade unit (E) into the power base slots (Fig. 3).
- Plug the appliance into the power mains.
- Pressing down gently on the top of the container (C or F) will start the blender, which will continue to operate for as long as it is pressed.
- To operate the blender without pressing continuously, lock the container (C or F) in the power base (B) by turning it clockwise (Fig. 4). To stop the blender, release the container (C or F) by turning it anticlockwise.
- After use, unplug the appliance and wait for the blade set to stop before removing the container (C or F) from the power base (B).
- Turn the container (C or F) upright and place it on a flat surface. To open the container, unscrew the blade set (E).
- Pour the contents into a glass or fit the container (C or F) with the special lid (D or G) to carry it round throughout the day (Fig. 5).
- Wash the container (C or F) after use.

IMPORTANT NOTE

Prepare the container (C or F) with the ingredients for blending and close it correctly with the blade set (E) before fitting it to the power base (B) and plugging it into the mains power.

The blades are sharp; handle with care.

Do not leave the appliance running for more than 30 seconds. Brief pulses of a few seconds each are best.

Never place hot liquids or fruit with stones or shells inside the container (C or F) as they could damage the blade.

Ice cubes must never be crushed without liquid.

HELPFUL HINTS

- First insert the liquids in the container (fruit juice, milk, yogurt or just water, according to the recipe you are using).
- Cut hard fruit and vegetables into piece from 1.8 to 2.5 cm in size.
- Do not overfill the container (C or F). If the power base blocks, switch off the blender immediately, unplug it and leave it to cool for at least 15 minutes. Remove the excess ingredients and continue to blend.
- This appliance is not designed to mash potatoes, whisk egg whites or dairy produce, mix solids or mince raw meat, or crush ice on its own or in large amounts.
- For the best results, add the ingredients in the following order: liquids, fresh ingredients, frozen fruit, yoghurt and ice cream

CLEANING

IMPORTANT NOTE

Unplug the appliance and make sure that the blades have stopped moving before cleaning the appliance.

The blades are sharp; take care when cleaning.

- The containers (C-F), blade set (E) and lids (D-G) are dishwasher safe (top rack).
- Wipe the power base (B) clean with a damp cloth. Do not use abrasive products.



IMPORTANT INFORMATION FOR CORRECT DISPOSAL OF THE PRODUCT IN ACCORDANCE WITH EC DIRECTIVE 19/2012/UE.

At the end of its working life, the product must not be disposed of as urban waste.

It must be taken to a special local authority differentiated waste collection centre or to a dealer providing this service.

Disposing of a household appliance separately avoids possible negative consequences for the environment and health deriving from inappropriate disposal and enables the constituent materials to be recovered to obtain significant savings in energy and resources. As a reminder of the need to dispose of household appliances separately, the product is marked with a crossed-out wheeled dustbin.

WARRANTY

**PLEASE AFFIX YOUR RECEIPT/PROOF OF PURCHASE HERE.
IN THE EVENT OF A CLAIM UNDER THIS WARRANTY THE AFORESAID RECEIPT/PROOF OF
PURCHASE MUST BE PRODUCED TOGETHER WITH THIS WARRANTY.**

Model number	(Lot number:)
Product name	
Date of purchase	
Place of purchase	

1. The party selling the product ("the seller") to the original purchaser of this product ("the customer") hereby warrants that this product will be of good quality and, in good working order and, free of defects and suitable for its intended purpose under normal household use, for a period of 1 (one) year from the date of purchase ("warranty period") of this product.
2. In the event that the warranty period has not lapsed and the product is not of a good quality, or in good working order or, is defective or is not suitable for its intended purpose under normal household use, the customer may, subject to paragraph 3 below, return the product to the seller and have the following options available:
 - 2.1 Within the first 6 (six) months of the warranty: to receive a refund of the actual price paid or exchange the product for the same or similar product of the same purchased value;
 - 2.2 Within the second 6 (six) months of the warranty: to have the product exchanged for the same or similar product of the same purchased value.
3. The seller will not replace the product or refund the customer in terms of this warranty if the product:
 - 3.1 has been altered contrary to the instructions provided in the product manual;
 - 3.2 has been misused, abused or tampered with;
 - 3.3 is defective or not in working order due to ordinary wear and tear;
 - 3.4 is damaged resulting from the customer's gross negligence, recklessness, malicious behavior or criminal conduct;
 - 3.5 has been utilised for commercial use.

4. This warranty applies only to the product that has been purchased from the seller and not to any expendables attached to or installed on the product by the customer.
5. Any claim in terms of this warranty must be supported by the original proof of purchase.
6. Note that the exchange item will only carry the balance of the warranty period as from the original date of purchase.
7. Spares:
Selected spares can be purchased from:

ServiceTec
10 Saddle Drive
Woodmead Office Park
Woodmead

Email: spares.za@delonghigroup.com
Tel: +27 11 474 0153

Ariete

De' Longhi Appliances Srl
Divisione Commerciale Ariete
Via San Quirico, 300
50013 Campi Bisenzio FI - Italy
E-Mail: info@ariete.net
Internet: www.ariete.net