

WITH REGARD TO THIS MANUAL

This appliance is made in conformity with appropriate European Regulations in force, to protect the user wherever possible from potential hazards. Even if you are familiar with this type of appliance, carefully read this manual before use. Only use this appliance for the purpose it is designed for in order to prevent accidents and damage. Keep this manual close by for future consultation. If you should decide to give this appliance to other people, remember to also include these instructions.

INTENDED USE

You can use the appliance for boiling water only. No other use of the product is allowed by the manufacturer, which is exempt from any liability for all types of damages caused by improper use of the appliance. Improper use also results in any form of warranty being forfeited.

WARNINGS OF BURNS

- Never fill the appliance beyond the maximum limit; there is a risk of spurts of boiling water.
- Be careful not to come into contact with the hot water while preparing beverages or cleaning; danger of burns.
- When filling the kettle, avoid contact with the steam that escapes from the spout and lid.
- **WARNING:** do not remove the lid while the water is boiling.
- Lift the kettle by its handle.
- During use, the appliance heats up. Avoid contact with the kettle.


IMPORTANT SAFEGUARDS

READ THESE INSTRUCTIONS CAREFULLY.

- This appliance is designed solely for household and similar uses such as:
 - in cooking areas used by personnel of shops, offices and other professional environments;
 - on farms;
 - guests of hotels, motels and other residential environments;
 - bed and breakfast type of environments.
- We decline any responsibility resulting from misuse or any use other than those covered in this booklet.
- It is recommended to keep the original packaging, because the free repair service does not cover failures caused by inadequate packaging of the product when shipped to an authorised Service Centre.
- Using accessories not recommended or not supplied by the manufacturer of the appliance may entail risks of fire, electric shock or injuries to people and will invalidate your warranty.
- The appliance complies with Regulation (EC) No 1935/2004 of 27/10/2004 on the materials in contact with food.
- This appliance can be used by children aged from 8 years and above and persons with reduced physical, sensory or mental capabilities or lack of experience and knowledge if they have been given supervision or instruction concerning use of the appliance in a safe way and understand the hazards involved.

- Children shall not play with the appliance or its components.
- Do not let the power cord hang in a place where it could be grasped by a child.
- Do not leave the packaging near children because it is potentially dangerous.
- In the event that this appliance is to be disposed of, it is suggested that the power cord is cut off. It is also recommended that all potentially dangerous components including the power cord are rendered harmless to prevent personal injury.
- Unplug the appliance when the kettle is not being used and before all maintenance and cleaning operations.
- Always turn off the appliance and unplug the power cord from the electrical outlet before filling the kettle with water. Do not go past the MAX level.
- Do not immerse the appliance in water or other liquids.
- Never let the kettle base, power supply base, cord or mains plug come into contact with water: risk of short circuit and / or electric shock.
- Never leave the appliance unattended when it is connected to the power supply.
- The appliance must be used and rested on a stable heat resistant surface.
- The appliance is not to be used if it has been dropped, if there are visible sign of damage or if it is leaking. Do not use the appliance if the power cord or the plug are damaged, or if the appliance is faulty. To prevent any accident, all repairs, including the replacement of the power cord, must be carried out by an Authorised Service Centre or, in any case, by qualified personnel.
- Place the appliance in an adequately illuminated environment and with the power outlet easily accessible.
- **WARNING:** do not use the appliance on an inclined surface.
- **WARNING:** make sure the appliance is turned off before removing the kettle from the power base.
- Do not lift the appliance by grasping its body or the power base. Hold it only by the handle.
- Only use the power supply base supplied: keep the base clean and dry.
- Never fill the appliance beyond the maximum limit; there is a risk of spurts of the kettle boiling over.
- Make sure the lid is correctly placed on the

- kettle before turning on the unit.
- Do not operate the kettle dry, without water.
- Never fill the kettle with hot or boiling water.
- The cable must not touch any hot parts of the appliance.
- The product cannot be powered by external timers or with separate remote control systems.
- Do not touch the hot surfaces. Only hold by the handle and knob provided for the purpose.
- Do not use sparkling (carbonated) water.
- Never use the appliance outdoors.
- Never put the appliance on or near gas stoves or electric hotplates.
- Do not expose the appliance to outdoor elements (rain, sun, etc.).
- Before cleaning the appliance always unplug it and allow it cool down. Clean only with a non-abrasive cloth that has been slightly dampened with water, adding a few drops of mild, non-aggressive detergent (never use solvents that damage plastic).

 For proper disposal of the product pursuant to the European Directive 2012/19/UE please read the relevant leaflet enclosed with the product.

SAVE THESE INSTRUCTIONS FOR FUTURE REFERENCE.


DESCRIPTION OF THE APPLIANCE

- 1 - Filter
- 2 - Kettle
- 3 - Power supply base
- 4 - Lid
- 5 - Water level indicator (Max and Min)
- 6 - On lever / Operation indicator
- 7 - Power cord + Plug
- 8 - Cord storage device


PRELIMINARY PHASES FOR USE

Using the appliance for the first time

Before connecting the appliance to the power supply, make sure that the voltage shown on the rating plate on the bottom of the appliance corresponds to the local mains voltage. Place the appliance on a horizontal, stable and heat resistant surface.

-  **Warning!**
Do not place the appliance or power cord close to or on top of hot electric or gas cookers, or close to a microwave oven.
Prevent the cord from protruding beyond the edge of the table or surface. Prevent children from grabbing the cord, in this way tipping over the appliance.
If the power cord is too long, wrap it around the power supply base cord storage device (Fig. 3). The cable must not touch any hot parts of the appliance.
Position the appliance so that children cannot reach the hot parts.

INSTRUCTIONS FOR USE


-  **Warning!**
The water filling and emptying operations must be performed with the kettle separated from the power supply base.
Before connecting or disconnecting the appliance from the electrical outlet, check that the ON/OFF lever is in the “0” position.
Do not use the kettle without water.

Boil the water the first time the appliance is turned on. Empty and rinse the kettle. Repeat the operation two or three times.

Fill the kettle with cool tap water to the desired level.

Do not go past the MAX level.

Replace the lid. Place the kettle on the power supply base (3). Insert the plug into the socket, which must be earthed. Lower the ON lever (6) to position “1”. The operation light (6) turns on. When the water boils, the appliance automatically turns off. The ON lever returns to “0” and the operation light turns off.

-  **Warning!**
Do not open the kettle lid while the water is boiling. Danger of splashing from boiling water.

Make sure that the kettle is off before lifting it from its power supply base. Grasp the kettle by its handle. Lift the kettle away from its power supply base. Pour the water into the cups. Empty any water remaining in the kettle after every use.
If you turn on the kettle when the water inside is below the level indicated by Min, the appliance turns off automatically. To boil water again, wait a few seconds to allow the boil dry protection device to reset.

If the kettle should turn on and off during use, or if it turns off before coming to the boil, check the appliance for an accumulation of scale (see “Removing lime”).

Any drops of water under the kettle is entirely normal: it is only condensation.

CLEANING THE APPLIANCE

-  **Warning!**
All cleaning operations described below must be performed with the appliance off and with the mains plug disconnected from the socket-outlet.

Regular maintenance and cleaning preserve and keep the appliance efficient for a longer period of time. Never wash any part of this appliance in the dishwasher. Do not use direct jets of water.

All cleanings operations must be performed when the appliance is cold.

Cleaning the kettle and power supply base

-  **Warning!**
Do not wash the appliance in a dishwasher.

Clean the appliance using a damp, non-abrasive cloth so as to not damage the body. Dry thoroughly with a soft cloth.

Filter

Open the lid. Remove the filter from the kettle. Wash the filter under running water. If necessary use a soft brush. Rinse thoroughly. Place the filter in the kettle. Alternatively you can leave the filter in the kettle and proceed with the descaling as described in the next paragraph.

Removing lime

Good maintenance and regular cleaning preserve and keep the appliance operating efficiently for a longer period of time, considerably limiting the risks of lime deposits forming inside the appliance. However, should your kettle fail to work properly as a result of the frequent use of hard, high calcium content water, you may perform a decalcification procedure to restore its operational efficiency. For this purpose you must use only Ariete citric acid-based decalcifying products (NOCAL). This product is easily found at the Ariete technical Service Centres. Ariete does not accept any responsibility whatsoever for damage to components inside the appliance caused by the use of non-compliant products containing chemical additives. Should you need to decalcify your appliance, please follow the instructions which come with the decalcifying product.

PUTTING OUT OF SERVICE

If the appliance is put out of service, electrically disconnect it. Cut the power cord.

In the case of scrapping, you must separate the various materials used in making the appliance and dispose of them based on their composition and on the legal provisions in force in the country of use.



Fig. 1

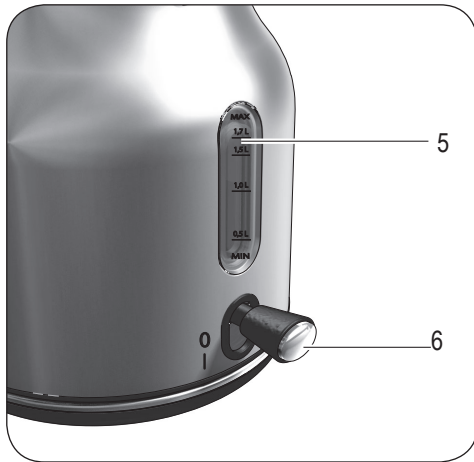


Fig. 2

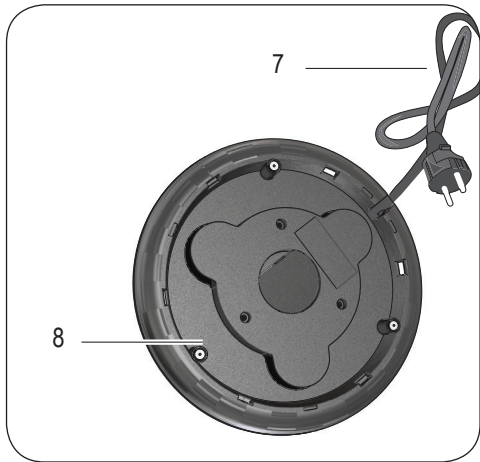


Fig. 3

本电器的制造符合欧洲法规的规定，尽可能保护用户免受潜在危害。即使你熟悉此类电器，也请使用前请仔细阅读本手册。为了防止事故和损害，仅将本电器用于其设计的用途。请妥善保管好本手册以备日后查阅。如果你打算将本电器赠送给他人，请记得带上本说明书一起赠送。

设计用途

你只能使用本电器烧开水，制造商不允许本产品有其它用途，否则电器因使用不当造成的所有损害制造商是负责的。使用不当也可导致保修单失效。

小心烫伤

- 严禁向电器中注水超过最大刻度；以防沸水蒸汽喷溅。
- 制造饮料货清洁过程中，小心避免接触热水。
- 向壶中注水，避免接触壶嘴或壶盖中喷出的蒸汽。
- 警告: 严禁烧水过程中打开壶盖。
- 通过抓握把手提起水壶。
- 在使用中，电器加热，避免接触水壶。

重要保障措施

请仔细阅读以下说明。

- 本电器设计仅供家庭用途或类似的用途，例如：
 - 商店，办公室和其它专业环境里的人在烹饪区使用；
 - 在农场上；
 - 宾馆、汽车旅馆和其它居住环境的客人；
 - 住宿加早餐类型的环境。
- 因使用不当或非本手册规定的用途导致的损失，厂商负责。
- 建议保存原包装，因为免费维修服务不包括运往授权的服务中心过程中因产品包装不当造成的故障。
- 使用非本电器制造商提供或推荐的零部件可能承担火灾、电击或人身伤害的危险并导致保修单失效。
- 本电器符合2004年10月27日颁发的1935/2004号文件有关食品接触材料法规的规定。
- 本电器可供8岁及以上儿童使用，身体、感官或智力下降及缺乏经验和知识的人，只有被给予监督和指导，以一种安全方式使用电器，并了解所涉及的危险时，才能使用本电器

- 切勿让儿童玩耍本电器及其组件。
- 切勿让电源线悬挂在儿童可能抓到的地方。
- 包装具有潜在危险性，切勿放置在儿童可接触的地方。
- 如果你决定处置本电器，我们建议你一定要切断电源线，同时我们还建议对可能具有潜在危险性（特别是对儿童具有危险性）的所有零件进行无害化处理，防止人身伤害。
- 当不使用水壶时，进行维修和清洗操作之前，一定拔掉电器的插头。
- 向水壶注水之前必须要先关闭电器，从电源插座上拔掉电源线插头。注水不要超过其最大水位线。

- 请勿将电器浸入水中或其它液体中。
- 决不能让水壶底座，电源底座，电源线或电源插头接触到水：具有短路或电击的危险。
- 电器连接电源时请勿擅自离开。
- 一定要在稳定耐热的台面上使用或放置本电器。
- 切勿继续使用摔过，或有明显的损坏或漏水迹象的电器。如电源线或插头损坏，或电器有故障，切勿使用该电器。为防止任何意外，所有维修，包括更换电源线，必须由授权的服务中心或有相关资质的人员来完成。
- 把电器放置在一个足够明亮及方便使用电源插座的环境里。

- 警告：请勿在倾斜的台面上使用本电器。
- 警告：从电源底座上取下水壶前确保关闭电源。
- 切勿通过抓住壶身或电源底座来拿起电器，只能抓住把手拿起。
- 只能通过电源底座供电：保持底座干净和干燥。
- 向电器注水不能超过最大水位线，否则水沸腾时具有喷出水壶的风险。
- 在打开电器前，确保壶盖正确的放置在水壶上。
- 严禁在没水情况下干烧水壶。
- 切勿向水壶注入热水或沸水
- 电源线不得接触电器的任何高温部件。
- 不允许使用外部计时器或单独遥控器来操作本电器。
- 切勿触摸高温表面。可握住把手或旋钮来操作。
- 切勿使用苏打水（碳酸水）。
- 切勿在户外使用本电器。
- 切勿把电器放置或靠近煤气炉或电炉。
- 切勿让电器暴露在户外环境（雨，阳光等）。
- 在清洁电器前一定要拔下插头并让其冷却。只能使用非磨料织物清洁电器，清洁时让织物变潮湿后，加入几滴温和的非侵蚀性的清洁剂（禁止使用侵蚀塑料的溶剂）。
- 按照2012/9/19EU欧盟指令妥善处理产品，详情请参阅产品随附的相关说明书。

- 请妥善保管手册，以备将来参阅。

请妥善保管手册，以备将来参阅

- 1 - 水垢过滤器
- 2 - 水壶
- 3 - 电源底座
- 4 - 壶盖
- 5 - 水位指示器
- 6 - 开机操作杆/运行指示器
- 7 - 电源线+插头
- 8 - 储线装置

初步使用阶段

首次使用

电器通电前，检查电器底部定额牌上的电压与当地电源电压是否一致。把电器放置在一个平稳和耐热的台面上。

- ⚠ 警告!
切勿把电器和电源线放置在高温的电炉或煤气炉旁边或上面，或靠近微波炉。

防止电源线突出桌子或表面的边缘。防止儿

童抓住电源线，从而导致电器翻倒。

如果电源线太长，把它缠绕在电源底座的电源线存储装置上（图3）。电源线不能触碰电器的任何高温部件。

电器放置位置应确保儿童不能接触高温部件。

使用说明

- ⚠ 警告!
装水和倒水时，必须先把水壶从充电底座上取下。
- 电器与电源插座连接或断开前，检查开关按钮是否处于“0”的位置。
- 切勿使用无水的水壶。

第一次打开电器把水烧开，然后把水排空并冲洗水壶。重复以上操作2到3次。

向壶内注入凉水直至所需的水位。

切勿超过最高水位。

盖上壶盖。把水壶放在电源底座上（3）。把插头插入插座，插座必须是接地的。把水壶开机操作杆（6）拨到“1”的位置，运行指示灯（6）亮起。水烧开后，电器自动关闭。开机操作杆返回到“0”的位置，运行指示灯关闭。

- ⚠ 警告!
当水沸腾时切勿打开水壶盖，沸腾的水溅出是很危险的。

从电源底座上取下水壶前确保水壶是关闭的。抓住水壶的把手，把它从电源底座上取走。把水倒进杯子里，每次使用后排空水壶里剩余的水。如果你打开水壶，水量低于最低水位线，电器会自动关闭。再次烧开水时，等待几秒钟让干烧保护装置复位。

如果使用过程中水壶应该是打开的但是却关闭了，或水沸腾前自动关闭了，请检查电器是否有大面积的水垢（见“清除水垢”）。

水壶下面的水珠是正常现象：仅仅是冷凝水。

清洁电器

- ⚠ 警告!
进行下文描述的所有清洗操作前，都必须先关闭电源，把插头从插座拔下。
- 定期的维护和清洁能够妥善有效保养和维护本电器，延长其使用时间。切勿把本电器组件放到洗碗机内清洗。切勿直接冲洗。
- 待其完全冷却后，方可进行清洁和保养。

清洗水壶和电源底座

- ⚠ 警告!
请勿把本电器放到洗碗机内清洗。
- 使用潮湿的非磨蚀抹布将其擦干净，防止损坏壶身。使用松软的布彻底擦干电器。

水垢过滤器

打开壶盖，从水壶拆下水垢过滤器，在自来水下冲洗水垢过滤器，如有必要使用一个软毛刷刷洗，彻底清洗过滤器。把水垢过滤器安装到水壶中。或者将水垢过滤器留在水壶内，然后按照下文部分所述进行操作。

去除水垢

妥善保养和定期清洁能够有效保养和维护本电器，大幅延长其使用寿命，减少电器内水垢的形成。尽管如此，使用一段时间之后，由于连续使用水钙质含量高的硬水，电器的工作会受到影响，需要去除水垢才能恢复运行效率。去除水垢时，只能使用阿里亚特柠檬酸基除水垢产品（NO-CAL）。您可以在阿里亚特技术服务中心购买此产品。对于任何因使用含有化学添加剂的不合格产品造成电器内部零件损坏的，阿里亚特不承担任

何责任。如果你需要去除本电器中的水垢，请按照除水垢产品的说明进行操作。

停止使用

如果不再使用本电器，一定要断开电源。请切断电源线。

如需报废电器，必须对各种制造材料进行拆分，并按照其成分和使用所在国的相关法律规定进行处理。

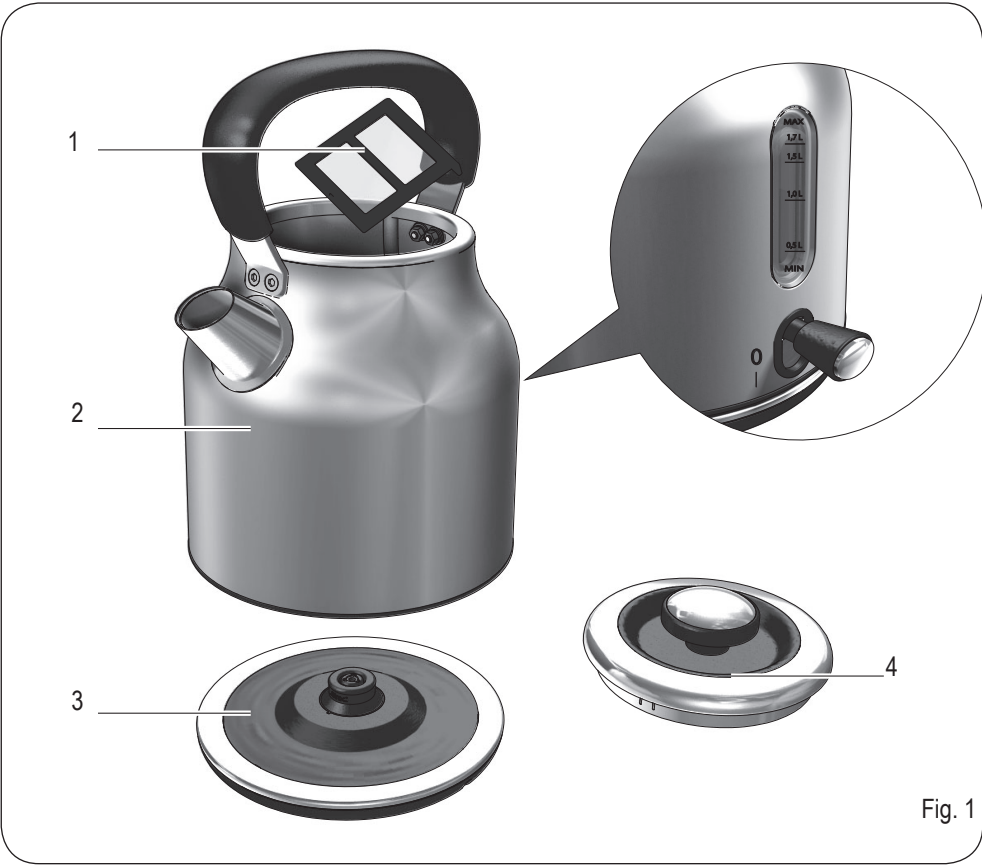


Fig. 1

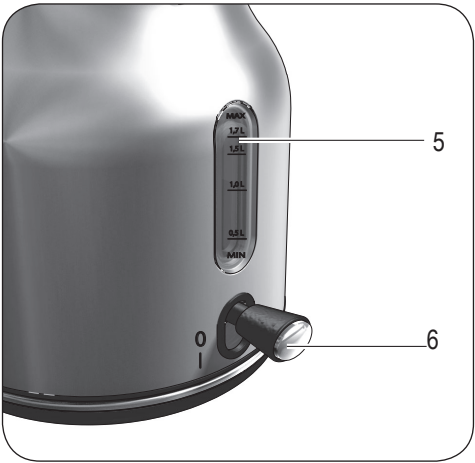


Fig. 2

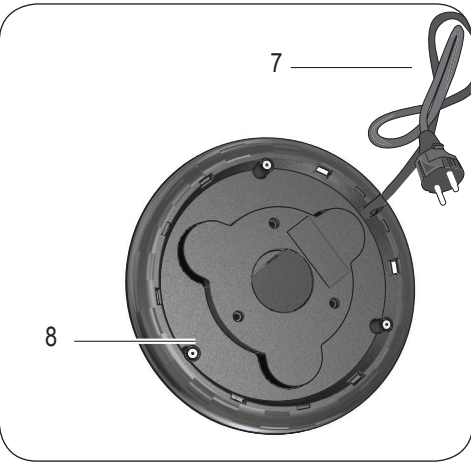


Fig. 3

Cod. 6285101300 Rev. 0 del 11/04/2019

Ariete



Kettle
水壶