



Grill  
多功能电烤盘

***Ariete***

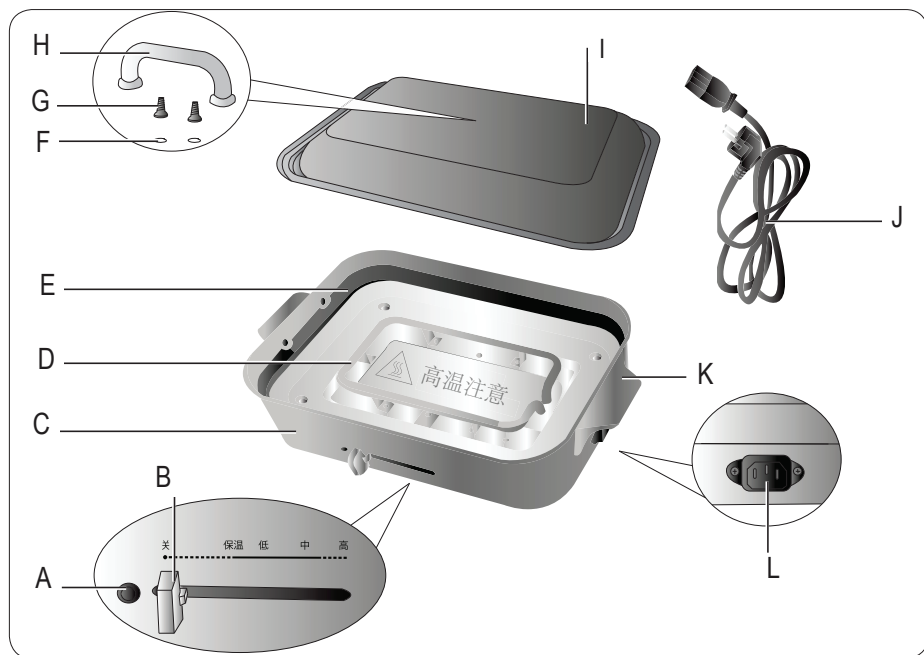
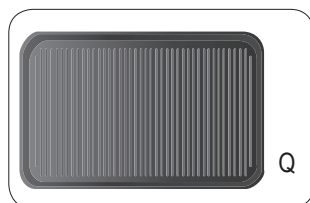
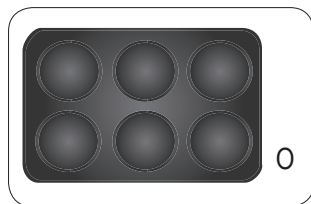
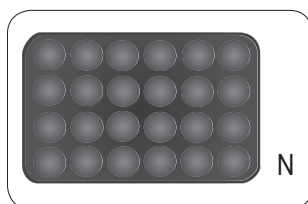
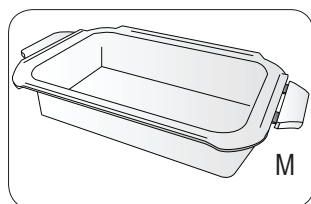


Fig. 1



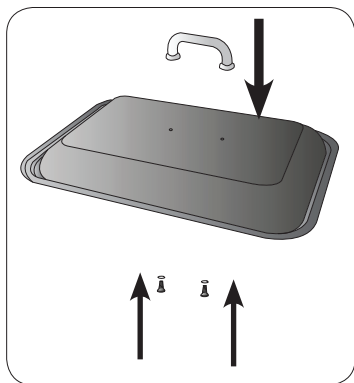


Fig. 2

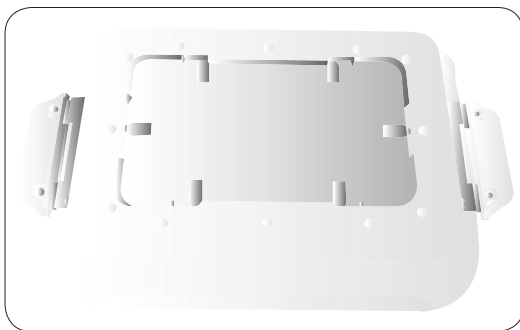


Fig. 3



Fig. 4

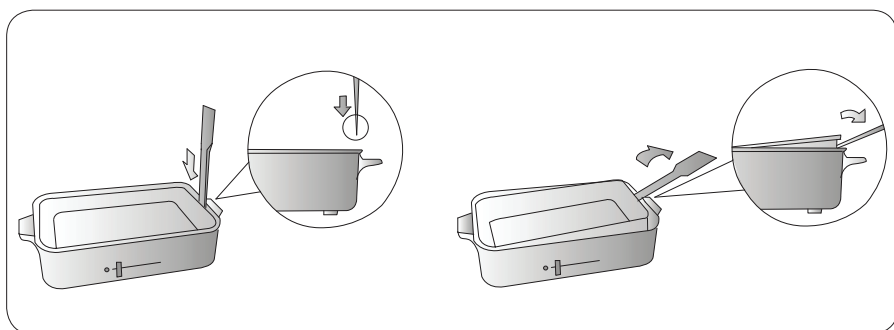


Fig. 5

## IMPORTANT SAFEGUARDS

---

### READ THESE INSTRUCTIONS CAREFULLY.

USING ELECTRICAL EQUIPMENT, IT IS NECESSARY TO TAKE APPROPRIATE PRECAUTIONS INCLUDING:

- Ensure that the voltage of the appliance is the same as that of the electricity supply.
- Never leave the appliance unattended when it is connected to the power supply; unplug it after use.
- During use, rest the appliance onto a horizontal and lit up surface.
- Place the product on a heat-resistant surface.
- Never place the appliance on or near to sources of heat, electrical elements or in a heated oven.
- Do not place the grill on other appliances.
- Do not use the appliance near walls or curtains.
- Do not place any object on the lid while the appliance is operating.
- Do not leave the appliance exposed to weathering ( rain, sun, etc..).
- Do not place the appliance near surfaces, materials or containers of flammable substances
- Make sure that the power cord does not come into contact with hot surfaces.
- This appliance can be used by children aged 8 years and up if properly monitored or if you have received instructions regarding the appliance safe use and if they understand the dangers involved.
- This appliance can be used by persons who have reduced physical sensory or mental capabilities, or lack of experience and knowledge, only if they are monitored by a responsible person or if they have received and understood instructions regarding the appliance safe use and if they have understood the dangers which may arise during the appliance use.
- Children shall not play with the appliance or its components.
- Cleaning and maintenance by the user must not be carried out by children unless they are older than 8 years and are monitored during the operation.
- Always keep the appliance and the power cord out of the reach of children under the age of 8 years both when the equipment is connected to the electric current and during the cooling phase after use.
- Do not immerse the appliance, the plug or the power cord in water or other liquids. Clean them with a damp cloth.
- Even when the appliance is not in use, unplug it from the electrical outlet before inserting or removing individual parts or before cleaning it.
- While the appliance is working the temperature of accessible surfaces can be very high.
- Never use abrasive or corrosive detergents to clean the appliance. This applian-

ce is not dishwasher safe.

- Make sure that your hands are dry before using or adjusting the switches on the appliance, or before touching the plug and power connections.
- To remove the plug, grab it directly and unplug it from the socket-outlet. Do not pull the power cord to unplug the appliance.
- If the power cord is damaged, it must be replaced with a special cord or a special component purchased from the manufacturer or maintenance department
- This appliance is designed only for private use, and is therefore to be considered unsuitable for commercial or industrial purposes.
- Any modifications made on this product that are not explicitly authorised by the manufacturer may lead to the forfeiture of its safety and guarantee of its use by the user.
- In the event that this appliance is to be disposed of, it is suggested that the power cord is cut off. It is also recommended that all potentially dangerous components including the power cord are rendered harmless to prevent personal injury. Do not let children play with the appliance or its components.
- Do not leave the packaging near children because it is potentially dangerous.
- The appliance can no longer operate with an external timer or an independent remote control system

**SAVE THESE INSTRUCTIONS FOR FUTURE REFERENCE.**

## DESCRIPTION OF THE APPLIANCE

---

- A - Thermostat control light
- B - Temperature adjustment knob
- C - Appliance body
- D - Heating element
- E - Inner insulation plate
- F - Washer (x 2)
- G - Screw (x 2)
- H - Handle
- I - Lid
- J - Power cord + Plug
- K - Handle
- L - Power outlet
- N - Takoyaki
- O - Bean plate
- P - Grill plate (if supplied)
- Q - Flat plate (if supplied)

## BEFORE USE

---

Before use, remove any labels on the plate. Assemble the handle (H) on the lid (I) using the screws (G) and the washers (F) provided. Put the handle on the external part of the lid where there are the two holes. Insert the washers on the screws. Keep the handle in the right position and turn the lid then insert the screws in the holes. Screw the screws with a screwdriver (Fig. 2). Wash all the cooking plates with dishwashing liquid and a non abrasive sponge.

## INSTRUCTIONS FOR USE

---

When using the appliance for the first time, you may notice the release of a thin wisp of smoke. This is due to the heating of some of the components and is no cause for concern. Place the appliance on a level surface. Check that the temperature control knob (B) is set to "OFF". Choose the cooking plate. Make sure that the cooking plate is clean and free of dust. If necessary, clean the cooking plate with a damp and soft cloth. Dry thoroughly with a soft cloth. Slightly grease the cooking plate with oil. Place it in its seat making sure that the heating element enters the specific slots (Fig. 3-4).



### Attention

Use only one plate at a time. Always turn off the appliance before changing the plate.

Insert the power cord (J) in the power outlet on the appliance (L). Insert the plug into a power outlet. Set the temperature control knob (B) on the LOW temperature to preheat the empty cooking plate. The thermostat control light (A) turns on and will turn off when the plate will reach the selected temperature. Wait for the temperature to be reached, indicated by the light (A) turning off. Once heated, adjust the knob (B) to the desired temperature. The set temperature will then be regulated automatically and kept constant by the thermostat.



### Attention

Danger of burns. Never touch the heating element and the inner insulation plate of the grill. The appliance has the writing "Caution hot surface" (Fig. 4).

Danger of burns. Do not touch the cooking plate with bare hands.



### Attention

Do not preheat the cooking plates on LOW for more than 5 minutes and on the other temperatures for more than 30 seconds to not damage the cooking plate and the heating element.

To cook the ingredients refer to the following list:

Symbol	Temperature	Use
保温	65-80° C	Temperature maintenance
低	100-130° C	Preheat, pizza, casserole, etc.
中	130-200° C	Takoyaki, pancake, cakes, etc.
高	200-250° C	Fried eggs, steaks, fried rice, etc.

While using the flat plate (P) or the deep ceramic plate (M) we suggest to use the lid to reduce the cooking time. Never fill the cooking plate beyond the maximum limit. Do not move the appliance during use. After use shift the temperature adjustment knob on "OFF".



### Attention

Do not touch the appliance during use or immediately after turning off. Wait that the cooking plate has completely cooled down before removing it. Danger of burns!

Remove the plate from the appliance body with a wooden spoon (Fig. 5). After using the cooking plate, to remove food residue, use a plastic spatula. Never use metal utensils to avoid damaging the cooking plate.



### Attention

Do not use film or aluminium paper to wrap the ingredients or to cover the plate while cooking.

## CARE AND CLEANING



### Attention

Before cleaning the appliance, make sure that it is disconnected from the mains supply and that it is completely cooled.



### Attention

Never immerse the appliance in water or other liquids.



### Attention

Check the state of the power cable of your appliance on a regular basis before using it, and if it is damaged, take it to the service centre closest to you to have it replaced only by specialised personnel.

To prevent a build-up of food residues, always clean the cooking plate after use. Clean the appliance body with a damp and soft cloth. Do not use sprays for cleaning operations so as not to damage the non-stick surface of the cooking plate. To remove the food residue, use a plastic spatula.

Don't use abrasive sponges.

Do not use abrasive cleansers or sharp metal tools to prevent scratching and damaging the cooking plate.

请仔细阅读以下说明书

使用电器设备时，必须采取适当的防护措施，其中包括：

确保设备上的电压与电源电压相一致。

- 当设备与电源连接时请勿离开，使用后拔掉插头。
- 使用过程中，将设备放置在水平的台面上。
- 将产品放在抗热台面上。
- 切勿将设备放置于或靠近热源、电器组件或加热的烤箱里。
- 切勿将烤架放置在其它设备上使用。
- 切勿靠近墙壁或窗帘使用本设备。
- 当设备在运行时，不要将任何物品放置在盖子上。
- 切勿将设备暴露在风化环境里（雨，阳光等）。
- 切勿将设备放置并靠近易燃物质的表面、材料或容器。
- 确保电源线不接触高温表面。
- 8岁及以上的儿童，如果有适当的监督，或如果你已经收到有关该设备安全使用的说明，如果他们了解所涉及的危险方可使用本设备。
- 身体、感官和智力下降或缺乏经验和知识的人不能使用本设备，除非有人负责监督他们，或他们收到并理解有关本设备安全使用的说明及使用过程中可能出现的危险。
- 儿童不得玩耍本设备或其组件。
- 用户设备的清洁和维护不得由儿童进行，除非他们的年龄在8岁以上并在操作的过程中受到监督。
- 在设备连接电流和使用后的冷却阶段，设备和电源线都要远离8岁以下的儿童。
- 请勿将设备、插头或电源线浸入水中或其它液体中，请用湿布擦拭他们。
- 即使不使用设备，在插入或拆卸个别组件前或清洗前，也要将其从电源插座上拔下。
- 当设备运行时可接处面温度非常高。
- 切勿使用擦洗剂或腐蚀性清洁剂清洗设备。不能用洗碗机清洗本设备。
- 在使用或调节电器开关前，或接触插头和电源连接之前，请确保双手干燥。
- 拔掉设备插头，只需抓住插头直接从电源插座上拔掉，切勿拉扯电源线。
- 如果设备滴水，或有明显的损坏或漏水迹象，不可再使用该设备。
- 如果电源软线损坏，必须用专业软线或从其制造商或维修部买到的专用组件来更换
- 本设备仅供私人使用，不得用作商业或工业用途。
- 未经制造商的明确授权，对产品的任何改动均可导致产品丧失安



全性和用户保修单失效。

- 如果你决定处置本设备，建议先切断电源线，同时我们还建议对可能具有危险性（特别是对儿童具有危险性）的所有零件包括电源线进行无害化处理，以防止人身伤害。切勿让儿童玩耍本设备或其组件。
  - 包装具有潜在危险性，请远离儿童。
  - 器具不能在外接定时器或独立的遥控控制系统的方式下运行
- 请保存好本说明书以备将来参考

## 设备描述

- A - 温控指示灯
- B - 温度调节旋钮
- C - 设备机身
- D - 发热管
- E - 内部绝缘板
- F - 垫圈 (x 2)
- G - 螺丝钉 (x 2)
- H - 把手
- I - 盖子
- J - 电源线+插头
- K - 把手
- L - 电源输出口
- N - 章鱼烧烤盘
- O - 多用途烤盘
- P - 坑纹烤盘（如果提供）
- Q - 平面烤盘（如果提供）

## 使用前注意事项

在使用设备前，移除盘子上的所有标签。用提供的螺丝钉（G）和垫圈（F）把盖子（I）上的把手（H）组装好。把把手放在盖子外面有两个孔的地方，把垫圈插入螺丝上，把手保持在正确的位置，把盖子翻过来，然后将螺丝插入孔中，用螺丝刀拧紧螺丝钉（图2）

用洗碗液和无磨擦的海绵清洗所有的烹饪盘。

## 使用说明

初次使用设备时，你可能会看到设备产生一缕轻烟，这是一些组件加热造成的，不用担心。

把设备放在一个水平面上。

检查温度调节旋钮（B）是否设置为“关闭”。

选择烹饪盘。确保烹饪盘干净无灰尘，如有必要，用湿软布清洁烹饪盘，再用松软布擦干。用食用油轻轻的涂抹烹饪盘，把它放在底座上，确保加热组件进入特定的槽（图3-4）



## 注意

一次只能使用一个盘子，在换盘子之前一定要关闭设备。

把电源线（J）插入设备的电源插座（L），把插头插入电源插座。把温度调节旋钮（B）设置在低温下，预热空烹饪盘。温控指示灯（A）打开，当盘子达到预定的温度时温控指示灯（A）关闭。一旦加热，将温度调节旋钮（B）调到所需温度。设定的温度将被自动调节并由恒温器保持恒定。



## 注意

烫伤的风险。切勿触摸加热组件及烤架内部绝缘板。该设备上写着“注意高温表面”（图4）。

烫伤的风险。切勿徒手触摸烹饪盘。



注意

请勿在低温下预热烹饪盘超过5分钟，（或）其它温度下超过30秒，以免损坏烹饪盘和加热组件。

烹饪成分可参考如下列表

标志	温度标示	使用范围
保温	65-80° C	温度的维持
低	100-130° C	预热、披萨、砂锅菜,等
中	130-200° C	日式章鱼烧烤、薄煎饼、蛋糕等
高	200-250° C	煎鸡蛋、牛排、炒饭等。

在在使用平面烤盘（P）或陶瓷深锅（M）时，我们建议使用盖子来减少烹饪时间。填充烹饪盘不得超过其最大刻度。

使用过程中不能移动设备。

使用后将温度调节旋钮调至“关闭”位置。



注意

在使用过程中或刚关闭时，切勿触摸设备。等烹饪盘完全冷却后再取出。小心烫伤！

用木铲（图5）将烹饪盘从设备上取下来。使用烹饪盘后，用塑料铲清除食物残渣。切勿使用金属器具以免损坏烹饪盘。



注意

烹饪时不要用薄膜或铝箔纸来包裹原料或覆盖盘子。

### 保养与清洁



注意

在清洁设备前，确保它与电源断开并且完全冷却。



注意

切勿将设备浸入水中或其它液体中。



注意

在使用设备前，应定期检查其电源线的状况，如有损坏，应将电源线送到离您最近的维修中心，由专人负责更换。

为了防止食物残渣的堆积，使用后一定要清洗烹饪盘。

用湿软的布清洁机身。

切勿使用喷雾剂清洗操作，以免损坏烹饪盘的不粘面。用塑料铲清除食物残渣，切勿使用磨料海绵。

切勿使用擦洗剂或锋利的金属工具，以免刮伤或损坏烹饪盘。

COD. 6135107300

REV.1 del 27/07/2018

***Ariete***

De' Longhi Appliances Srl  
Divisione Commerciale Ariete  
Via San Quirico, 300  
50013 Campi Bisenzio (FI)  
E-Mail: [info@ariete.net](mailto:info@ariete.net)  
Internet: [www.ariete.net](http://www.ariete.net)

