



Spend a little Live a lot

Great care has gone into the manufacture of this product and it should therefore provide you with years of good service when used correctly. In the event of product failure within it’s intended use over the course of the first 3 years after date of purchase, we will remedy the problem as quickly as possible once it has been brought to our attention. In the unlikely event of such an occurrence, or if you require any information about the product, please contact us via our helpline support services, details of which are to be found both in this manual and on the product itself.



**PRODUCED IN CHINA FOR:**  
ALDI STORES LTD. PO BOX 26, ATHERSTONE  
WARWICKSHIRE, CV9 2SH.

ALDI STORES (IRELAND) LTD.  
PO BOX 726, NAAS, CO. KILDARE.  
visit us at [www.aldi.com](http://www.aldi.com)

**AFTER SALES SUPPORT**

**GB** 01924 481053 **GB** [customerservice@jaleno.com](mailto:customerservice@jaleno.com)  
 **IRE** 014968036/014963993 **IRE** [kenilworthelec@eircom.net](mailto:kenilworthelec@eircom.net)

Model: 6435/A Product Code: 74949 02/2017



Spend a little Live a lot

# User Manual

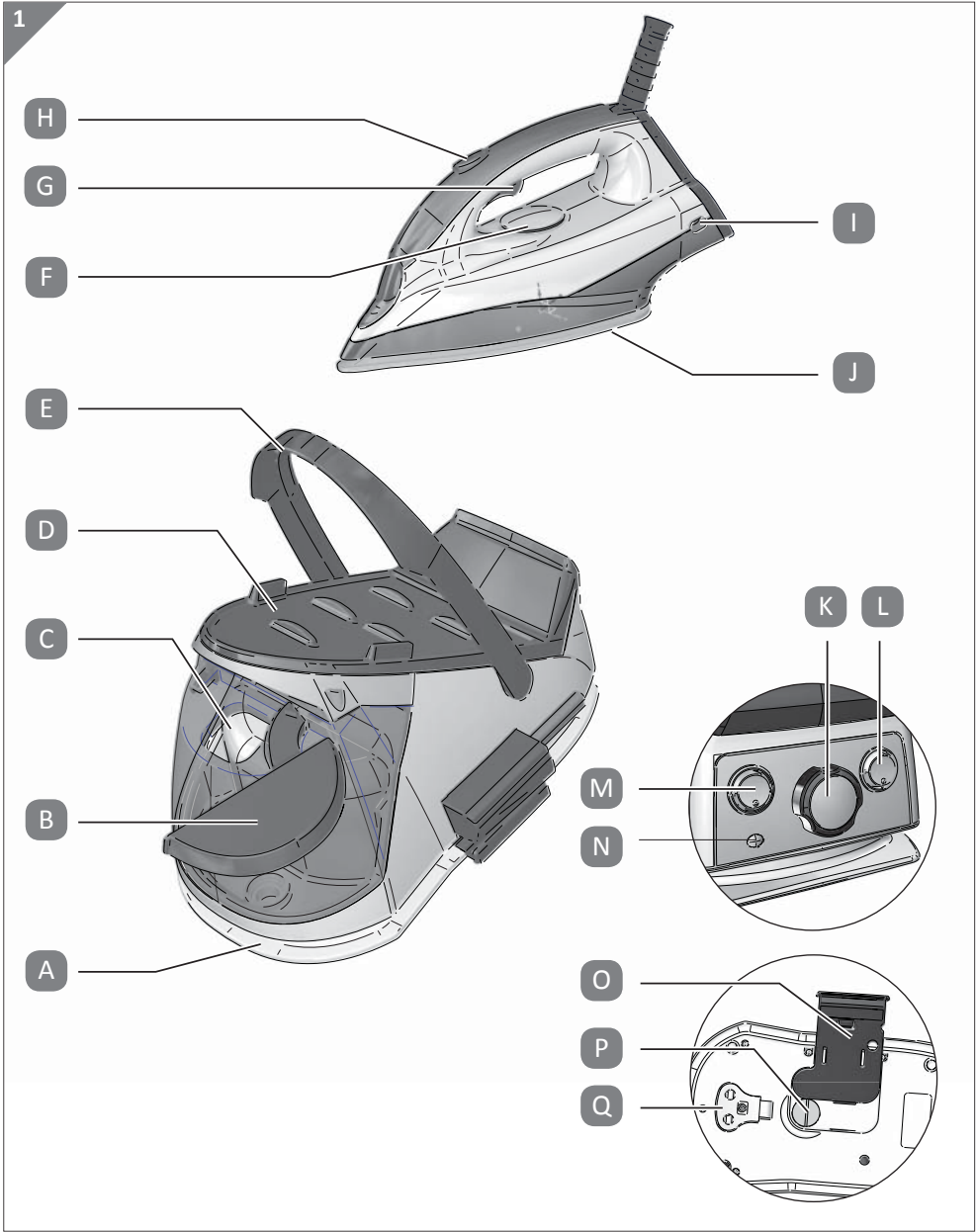
EASY  
HOME<sup>®</sup>

## PREMIUM STEAM GENERATOR IRON



### Contents

Content	
Intended use.....	7
Residual risks.....	7
Compliance to EU Directives.....	8
Important safeguards.....	8
Instruction for use .....	11
Vertical ironing .....	15
Dry iron.....	15
Suggestions.....	16
After ironing .....	17
Cleaning and maintenance .....	18
Technical Data .....	20
Disposal of Waste .....	20



## Description of the appliance

- A Cord storage device
- B Tank cover
- C Tank
- D Iron support grid
- E Appliance carrying handle
- F Temperature adjustment knob
- G Steam button
- H Continuous steam lock slider
- I Iron temperature control indicator light
- J Soleplate
- K Steam adjustment knob
- L Iron on-off switch
- M Boiler on-off switch
- N Steam ready light
- O Boiler cleaning cap door
- P Boiler cleaning cap
- Q Key for unscrewing the boiler safety cap

## With regards to this manual

Even if the appliances are made in conformity with the European regulatory specifications in force and therefore all potentially hazardous parts are protected.

Carefully read these warnings and use the appliance only for the use it is designed for in order to prevent accidents and damage.

Keep this manual close by for future consultation. If you should decide to give this appliance to other people, remember to also include these instructions.

The information in this manual is marked with the following symbols and words that indicate:



Risk of injury

### **DANGER**

**Warns the user on the possible risk of serious injury**



Risk of electric shock

### **WARNING**

**Warns the user on the possible risk of injury or serious property damage**



Risk of burns

### **CAUTION**

**Warns the user on the possible risk of minor injury**



Risk of material damage

### **NOTE**

**Warns the user on the possible risk of material damage**

This manual is available in electronic format on the website.

## INTENDED USE

You can use the appliance for ironing clothing of any kind, curtains and fabrics by following the instructions on the label, dry or steam and also in a vertical position. Iron fabrics using a stable surface both for supporting the fabrics and for setting down the iron when changing the garments.

The appliance has been designed for home use only and must not be used for commercial or industrial purposes.

Any other use of the appliance is not intended by the Manufacturer who does not accept any responsibility for damages of any kind caused by improper use of the appliance itself.

Improper use also results in any form of warranty being forfeited.

## RESIDUAL RISKS



**RISK OF BURNS - The constructive characteristics of the appliance, covered by this publication, does not allow to protect the user from possible contact with the hot plate**

of the iron both during the intended use and in the minutes following its switching off. Furthermore, pay close attention when steam is being delivered and do not direct it turn it towards body parts or pets.

## **WARNING**

**RISK OF INJURY** - After you have turned off the iron and unplugged it from the socket-outlet, let it rest on a stable surface and above all out of the reach of children.

## **COMPLIANCE TO EU DIRECTIVES**

This appliance conforms to the directives 2014/35/EU, EMC 2014/30/EU, 2011/65/EU. To dispose of the product correctly according to European Directive 2012/19/EU, please refer to and read the provided information enclosed with the product.

## **IMPORTANT SAFEGUARDS**

### **READ THESE INSTRUCTIONS BEFORE USE.**

### **ALWAYS KEEP THESE INSTRUCTIONS.**

1. We decline any responsibility resulting from misuse or any use other than those covered in this booklet.
2. We suggest you keep the original box and packaging, as our free-of-charge service does not cover any damage resulting from inadequate packaging of the product when this is sent back to an Authorised Service Centre.
3. This appliance can be used by persons with reduced physical sensory or mental capabilities, or lack of experience and knowledge, if they have been given supervision or instruction concerning use of the appliance in a safe way and understand the hazards involved.



### **Danger for children**

4. This appliance can be used by children aged from 8 years if the have been given supervision or instruction concerning use of the appliance in a safe way and understand the hazards involved.
5. Children shall not play with the appliance.

6. Cleaning and user maintenance shall not be made by children without supervision.
7. Keep the iron and its cord out of reach of children less than 8 years of age when it is energized or cooling down.
8. Packaging elements must not be left in reach of children as they are potentially hazardous.



### **Danger of electric shock**

9. Make sure that the voltage on the appliance rating plate corresponds to that of your local mains electricity supply.
10. Always connect the iron to an earthed socket.
11. Do not start ironing if your hands are wet or if you are barefoot.
12. Never leave the appliance unattended when connected to the power supply; unplug it after every use.
13. Make sure that the power cord does not come into contact with hot or sharp surfaces.
14. It is not recommended to use this appliance in conjunction with an extension cord.
15. Remove the plug from the power outlet before cleaning or maintenance.
16. Do not immerse the appliance in water or other liquids.
17. The appliance must not be used if it has been dropped, if there are visible signs of damage or leaks of water. Do not use the appliance if the power cord or the plug are damaged, or if the appliance is faulty. To prevent any accident, all repairs, including the replacement of the power cord, must be carried out by an Authorised Service Centre or, in any case, by qualified personnel




### **Danger of burns**

18. Never try to iron garments being worn.
19. Do not touch the metal parts of the iron when in operation and for



several minutes after it is turned off since it could cause burns.

- 20. Do not aim the jet of steam towards parts of the body or pets.
- 21. The Plug must be removed from the socket-outlet before the water reservoir is filled with water.
- 22.  CAUTION: Hot surfaces



### **Danger of damage originating from other causes**

- 23. Never leave the appliance unattended when it is connected to the power supply.
- 24. Turn on the appliance only when it is in working position.
- 25. Choose an adequately illuminated and clean room with easily accessible power outlet.
- 26. During use, rest the appliance onto a horizontal surface. The iron must be put to rest only on its iron support grid.
- 27. The appliance must be used and left at rest on a stable surface.



### **Danger of material damage**

- 28. Place the appliance on a work surface that bears a temperature of at least 90°C (194°F). Do not place the appliance on delicate surfaces.
- 29. When the iron is hot, do not rest it onto the connecting cable or the power cord. Take special care in ensuring that the cable and the cord do not come into contact with the soleplate when it is hot.
- 30. Do not pull the power cord to unplug the appliance.
- 31. Do not pour vinegar, descalers or other scented substances into the boiler; Otherwise, the warranty may be revoked.
- 32. Do not expose the appliance to atmospheric agents (rain, sun ...).



## INSTRUCTION FOR USE

When using the iron for the first time, try it on an old piece of cloth to test that the soleplate and the tank are perfectly clean.

### DANGER

**RISK OF ELECTRIC SHOCK - Check the state of the power cable of your iron system on a regular basis before using it, and if it is damaged, take it to the service centre closest to you to have it replaced only by specialised personnel.**

NOTE: using the appliance with no water in the boiler may damage the pump.

- Remove any labels and protections from the soleplate before using the appliance for the first time.
- Fill up the boiler with water before starting up the appliance.
- Make sure the surface on which the iron system support is placed is stable.

## Filling the boiler before use

### DANGER

**RISK OF ELECTRIC SHOCK - Remove the plug from the power outlet before filling the tank with water.**

- The product functions with normal tap water.
- Rotate the tank lid (B).
- Fill the tank with cool tap water. Pour natural mineral water into the tank until completely filled (Fig. 2).
- Close the tank lid.

### NOTE

**RISK OF MATERIAL DAMAGE - Never use pure demineralized water.**

**Do not add any additives or chemicals (such as for example, amides, starches, perfume or other). Otherwise, the warranty may be revoked.**



**Do not fill the tank with an excessive amount of water. Do not use sparkling (carbonated) water.**

**If the tap water is particularly hard (higher than 20°FH), use a mixture of 50% tap water and 50% demineralized water.**

**Do not use mineral or other types of water (such as rainwater or water for batteries or air conditioners etc.).**

**If you use filtering devices, make sure the water obtained has a neutral pH.**

## NOTE

**RISK OF MATERIAL DAMAGE - NEVER fill the tank beyond the MAX level.**

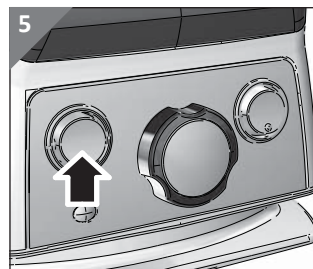
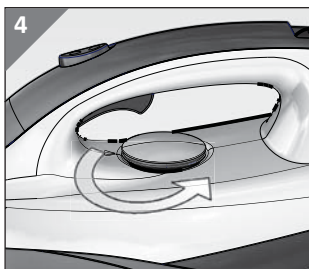
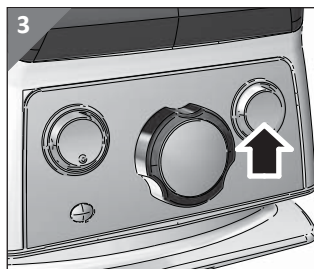
**To avoid damaging the pump, never operate the appliance without any water in the tank, even for dry ironing.**

## Switching on the appliance

NOTE: the appliance may give out a little smoke when used for the first time. This transitory effect is perfectly normal and is due to the fact that some of components have been slightly lubricated.

- Always unwind the power cord before use.
- Before you turn on the appliance, make sure there is sufficient water inside the tank.
- Connect the appliance to the power supply, ensuring that the voltage indicated on the identification plate corresponds to your local power supply.
- Keep the iron on its grille rest.
- Press the iron power switch.
- Set the temperature control knob to the desired temperature.
- Press the boiler power switch.
- Wait until the steam ready light turns on to use the steam.

NOTE: on first use, after filling the tank, it is necessary to adjust the temperature control knob over the symbol (●●●) and press the steam button until the iron does not produce steam (about one minute). The iron is now ready for use.



- Before applying a jet of steam to the article to be ironed, release two or three good jets of steam towards the floor to stabilise the steam flow (Fig. 6-7).

The boiler is now automatically filled by a pump which produces a noise (vibration) lasting a few seconds every time it is activated. A decrease in the steam output may occur soon after the pump starts operating: it is perfectly normal and after a few seconds the steam will again be regular.

## NOTE

**RISK OF MATERIAL DAMAGE - Never dispense steam when the iron is placed over the appropriate iron rest grill.**

**When you must be away even for a short time, always place the iron on the appropriate iron rest grill.**

## Temperature selection

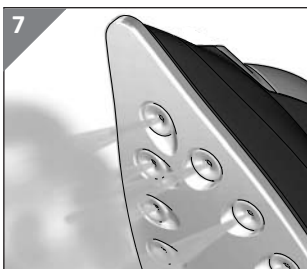
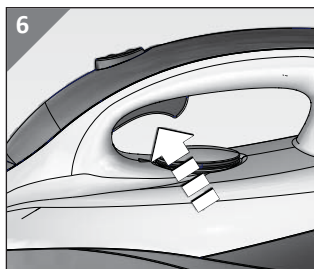
- First check whether the fabric has a label containing ironing instructions and compare the symbol with the instructions which follow. If there is no label with instructions, but you know the type of material, follow the instructions below.

NOTE: the table refers to fabrics not treated with sizing agents or similar products; if they have been, you can also iron at a lower temperature.

## Shot of steam

- Set the required ironing temperature using the thermostat knob over the symbol (•••).
- Wait until the iron temperature control light turns off. Wait until the steam ready light turns on.
- When you press the steam button (G) from 3 to 5 seconds, an intense jet of steam will be dispensed when the button is released.

NOTE: water might get out from the steam holes if you press the steam button before the appliance has reached the best temperature or before the iron is hot.



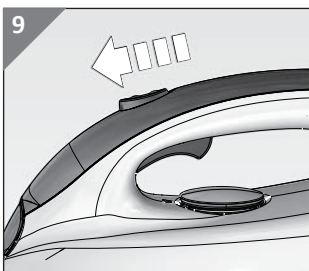
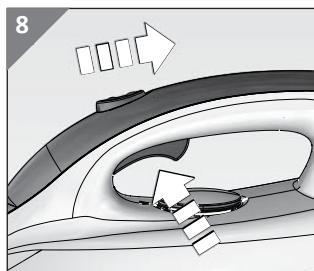
**NOTE**

**RISK OF MATERIAL DAMAGE** - Never dispense steam when the iron is placed on the iron rest grill.

**Do not operate the steam dispensing button uninterruptedly for more than 30 seconds: water droplets can come out from the steam holes of the iron plate.**

**Continuous steam**

- Set the required ironing temperature using the thermostat knob over the symbol (•••).
- Wait until the iron temperature control light turns off. Wait until the steam ready light turns on.
- Press the steam button (G) and move the continuous steam lock slider towards the handle (Fig. 8). The continuous steam lock slider (H) will lock the steam button causing the output of a continuous and constant steam jet.
- To release the steam button and stop the continuous jet push the lock slider forward (Fig. 9).



## Filling the tank during use

NOTE: always check the level of water in the tank while you are ironing. If the appliance is not switched off promptly, overheating of the pump could cause a momentary stoppage of the appliance. Therefore it is necessary to switch off the appliance and fill the tank. Wait about an hour for the appliance to cool down and resumes normal operation.

- Position the appliance on a stable surface.
- Turn off the appliance by pressing the switches (L) and (M).
- Remove the power cable from the socket-outlet.
- Take the iron and press the steam button. Let all the residual steam come out.
- Store the iron on its iron stand grid.
- Let the appliance to cool down for a few minutes.
- Add water directly in the tank (Fig. 2).
- The product functions with normal tap water. Pour natural mineral water into the tank until the MAX level.
- Close the tank lid.
- Insert the plug into the electrical outlet and turn on the appliance again.

NOTE: if the iron is not used for a long time (several weeks) before ironing it is advisable to keep it in a horizontal position and operate the steam button for about 30 seconds in order to clean the internal steam tubes

## VERTICAL IRONING

You can use the jet of continuous steam for ironing hanging fabrics. This special ironing procedure serves to remove creases from curtains, fabrics, etc.

- Set the required ironing temperature using the thermostat knob over the symbol (•••).
- Put the curtain or fabric in the position you want to iron it vertically and press the steam button.



**RISK OF BURNS - Do not iron fabrics held by other people.**

## DRY IRON

- Connect the appliance to the mains.
- Switch on the appliance.
- Adjust the thermostat knob to the desired temperature.





NOTE: do not press the steam button.

## SUGGESTIONS

Divide the articles to be ironed according to the types of material: wool with wool, cotton with cotton, etc...

Because the iron heats up much more quickly than it cools down, it is advisable to start with those fabrics which require lower temperatures and move on to those which require progressively higher temperatures.

If the material is made up of more than one type of fibre, always set the temperature to the fibre which requires less heat. For example, if the material is made up of 70% synthetics and 30% cotton, set the temperature control to position (•) (see table) without steam, that is, the temperature for synthetic fabrics.

Label Ironing instructions	Kind of fabric	Thermostat
	Synthetic fabrics: Acetate Acrylic Viscose Poliammide (Nylon) Viscose (Rayon) Silk	•
	Wool	••
	Cotton Linen	•••
	The mark on the label means do not iron	

If you do not know the composition of the article to be ironed, choose a part of the article which will not be seen. Do a test ironing on this part to establish the appropriate temperature (always start with a relatively low temperature and work up until the ideal temperature is reached).

Pure (100%) wool articles can be ironed with the iron set to one of the steam positions. To avoid pure wool, silk and synthetic materials becoming shiny, it makes good sense to iron them on the reverse side. For other materials, especially velvet, which can become shiny very easily, cover them with a cloth and iron in one direction only, using light pressure. The iron must be kept constantly moving over the fabric.

## AFTER IRONING

### NOTE

**RISK OF MATERIAL DAMAGE** - To prevent lime residue from forming, empty the tank following use and after having turned off the appliance and unplugged it from the socket-outlet.

- Turn off the boiler by pressing the switch (M).
- The appliance is still energized when plugged in and it is possible to eliminate the pressure remaining in the boiler by pressing the steam button (G).
- Turn the appliance off by pressing the switch (L).
- Remove the power cable from the socket-outlet.
- Wait few minutes to make the appliance cool down.
- Empty the water tank completely so as to prevent the water from stagnating, which may form lime deposit.
- Store the power cord in the cord storage compartment (A).
- Put back the cable connecting the iron to the boiler in the cord storage compartment.
- Let the iron cool down on its stand, taking care not to touch the power cables and connection with the hot parts of the appliance.
- Put the appliance back on top of a stable surface and out of the reach of children.

## CLEANING AND MAINTENANCE

### DANGER

**RISK OF ELECTRIC SHOCK** - Never immerse the appliance in water or other liquids.

### WARNING

**RISK OF BURNS** - Always unplug the appliance before cleaning it. Let the iron cool on the dedicated iron stand grid.

### NOTE

**RISK OF MATERIAL DAMAGE** - Check the state of the power cable of your iron on a regular basis before using it, and if it is damaged, take it to the service centre closest to you to have it replaced only by specialised personnel.

### Plastic parts cleaning

- Clean plastic parts with a damp, non-abrasive cloth and dry them with a dry cloth.

### NOTE

**RISK OF MATERIAL DAMAGE** - Never use solvents which may damage the plastic parts

### Cleaning the soleplate

- Any deposits and other residue material on the soleplate can be removed using a cloth soaked in a water and vinegar solution. Always dry the soleplate with a dry cloth.

### NOTE

**RISK OF MATERIAL DAMAGE** - Do not use abrasives for cleaning the soleplate. Try and keep the soleplate smooth: avoid contact with metal objects.

### Emptying the boiler and cleaning it internally

### WARNING

**RISK OF BURNS** - If an ironing operation has only recently finished, switch off the appliance, disconnect the power cable from the mains. Wait at least two hours, until the appliance is cold and the internal pressure is depleted, before unscrewing the cap (P).

Do not unscrew the boiler cap with the appliance in its working position, as this may cause the water in the boiler to escape unexpectedly (Fig. 10).

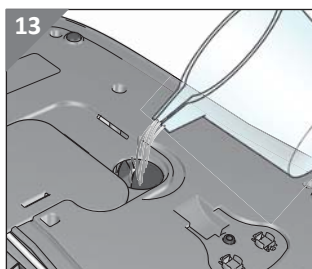
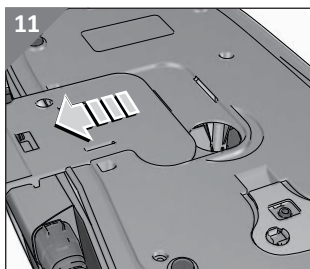
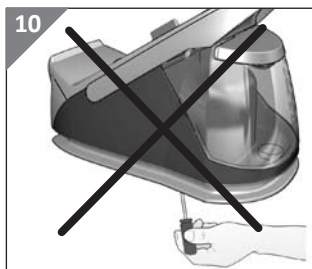
**NOTE**

**RISK OF MATERIAL DAMAGE - Do not put vinegar, decalcifying agents or other fragrant substances inside the boiler. Otherwise, the warranty may be revoked.**

**The warranty does not cover damage caused by clogging due to lime.**

- Empty the tank completely before emptying the boiler.
- Place the appliance so as to obtain the boiler cleaning cap (P) on the top (Fig. 11).
- Open the door (O).
- With a flathead screwdriver or the key (Q), unscrew the boiler cleaning cap. Overturn the appliance on a sink and completely drain the boiler (Fig. 12)
- Place a cup of tap water in the boiler (Fig. 13).
- Shake the appliance well, then empty it again of all the water.
- Repeat this operation until the water coming out of the boiler is clean and clear.
- After cleaning the boiler, pour approx. 400 cc of water into the boiler and refit the cap (P) tightening it slightly, without forcing it excessively.
- Close the door (O).

Clean the boiler at least every two months so as to eliminate any residue of lime that could jeopardize proper operation of the appliance.



## TECHNICAL DATA

Nominal voltage:	220-240V~
Nominal frequency:	50-60Hz
Nominal power:	2300W
Protection Class:	I (This appliance must be earthed.)

## DISPOSAL OF WASTE



The product packaging is made of recyclable materials. The packaging material can be taken to public recycling collection points.



Old appliances do not belong in household waste! To comply with current legislation, old appliances, having reached the end of their useful lives, should be taken to a disposal facility where they can be sorted.

In this way, any valuable material contained in the old appliances can be recycled and the environment protected. Responsible local authorities or their waste disposal operators can provide further information.



EASY  
HOME®

## WARRANTY CARD

Premium Steam  
Generator Iron

## Your personal details:

Name \_\_\_\_\_

Address \_\_\_\_\_  
\_\_\_\_\_  
\_\_\_\_\_

Email \_\_\_\_\_

Date of purchase\* \_\_\_\_\_

\* We recommend you keep the receipt with this warranty card

Location of purchase \_\_\_\_\_

## Description of malfunction:



## Return your completed warranty card to:

Jaleno Europe Limited  
Roe Head House  
Far Common Road  
Mirfield  
West Yorkshire  
WF14 0DQ  
EnglandKenilworth Electrical  
253 Harolds Cross Road,  
Dublin, Ireland  
kenilworthelec@eircom.net

## AFTER SALES SUPPORT



GB 01924 481053

IRE 014968036 / 014963993



GB customerservice@jaleno.com

IRE kenilworthelec@eircom.net

MODEL: 6435/A PRODUCT CODE: 74949, 02/2017

3

YEAR WARRANTY



## Warranty conditions

Dear Customer,

The **ALDI warranty** offers you extensive benefits in addition to your statutory rights:

**Warranty period:**      **3 years from date of purchase.**  
**6 months** for wear parts and consumables under normal and proper conditions of use (e.g. rechargeable batteries).

**Costs:**                      Free repair/exchange or refund.  
No transport costs.

**Hotline:**                      No additional charge for fixed network calls.

**ADVICE:** Please contact our service hotline by phone, e-mail or fax before sending in the device. This allows us to provide support in the event of possible operator errors.

**In order to make a claim under the warranty, please send us:**

- the original receipt and the warranty card properly completed.
- the product with all components included in the packaging.

**The warranty does not cover** damage caused by:

- **Accident or unanticipated events** (e.g. lightning, water, fire).
- **Improper use or transport.**
- **Disregard of the safety and maintenance instructions.**
- **Other improper treatment or modification.**

After the expiry of the warranty period, you still have the possibility to have your product repaired at your own expense. If the repair or the estimate of costs is not free of charge you will be informed accordingly in advance.

This warranty does not affect your statutory rights.