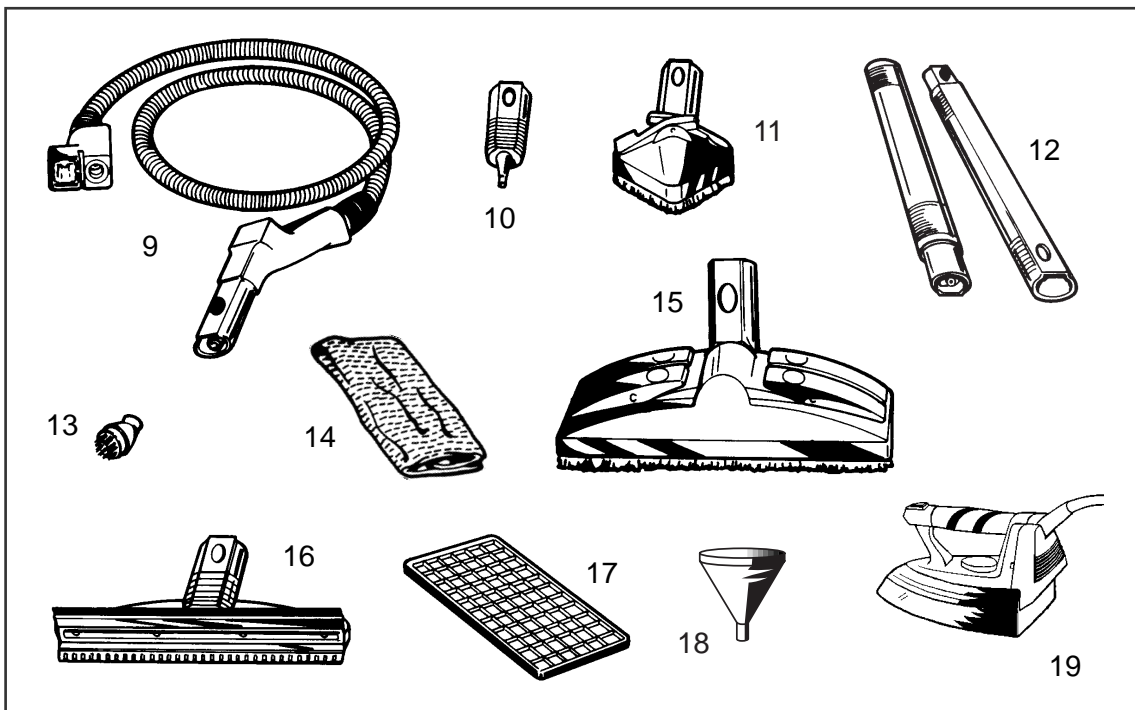
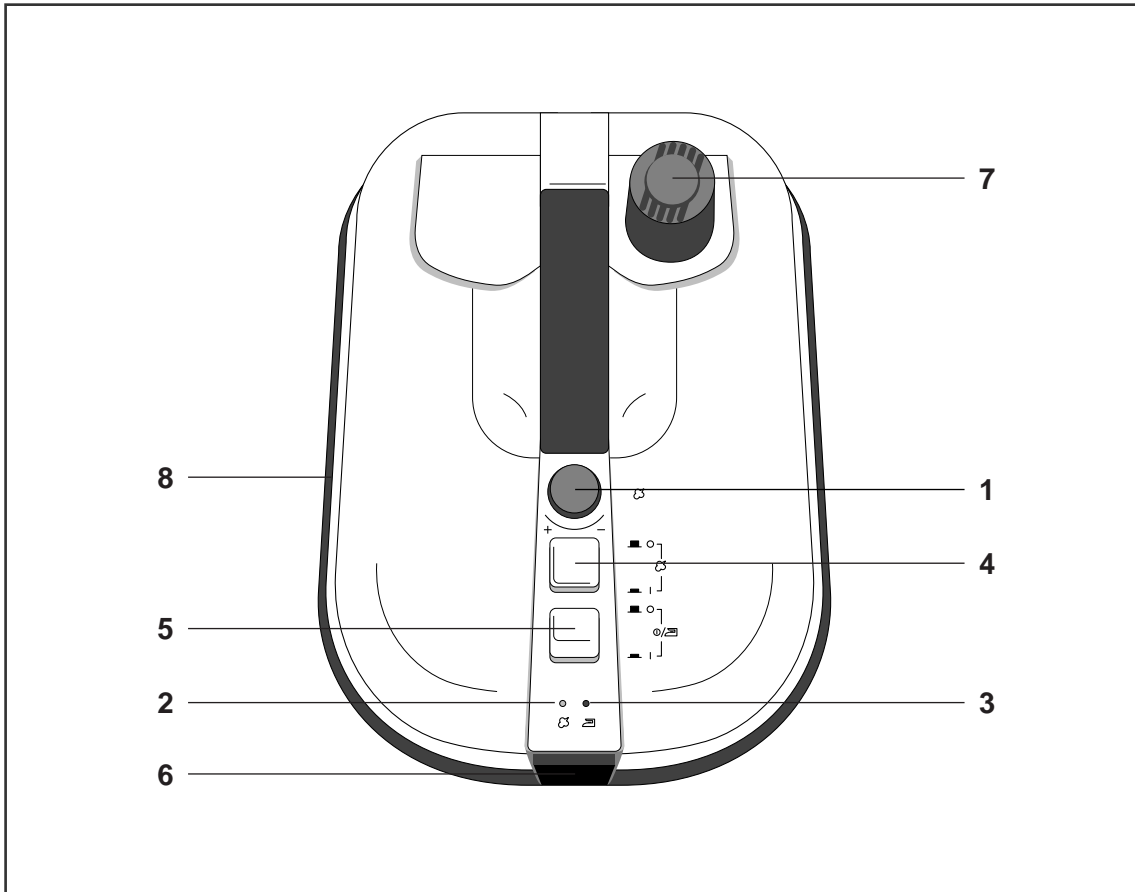


Steam cleaner with Professional Iron



Instruction for use



Dear Customer,

Thank you for purchasing one of our appliances.

All De'Longhi products are the result of considerable research & development and undergo stringent technical testing.

We have prepared this manual to help you make the most of your steam cleaner and fully appreciate its superb quality.

We are certain that, if you follow our suggestions, this appliance will give you maximum satisfaction and many years of service.

By using the natural power of steam, you will also be helping to reduce pollution derived from the dispersion of chemical household detergents into the environment.

This appliance has been designed to clean all hard surfaces, carpets and upholstery to an exceptionally high standard.

It also comes equipped with a steam generator iron with high steam output for easy ironing – the fast and efficient way to take the hard work out of day-to-day household chores.

COMPONENT DESCRIPTION

- | | |
|--------------------------------|---|
| 1. Steam output control | 10. Crevice tool |
| 2. Steam generator indicator | 11. Triangular brush |
| 3. On/off indicator | 12. Two extension tubes |
| 4. Steam generator switch | 13. Two small brushes for the crevice tool |
| 5. On/off switch | 14. Cloth for carpet/floor brush and triangular brush |
| 6. Hatch | 15. Carpet/floor brush |
| 7. Safety cap | 16. Squeegee |
| 8. Bumper | 17. Iron mat |
| 9. Flexible hose with handgrip | 18. Funnel |
| | 19. Iron |

CONTENTS

Important safety information	page 4
Preparing for use	page 6
Filling the steam-generator water chamber	page 10
Using the steam-generator iron	page 10
Step by step diagram	page 12

IMPORTANT SAFETY INFORMATION

- 1) Read these instructions carefully.**
- 2) When in use, the appliance contains pressurised steam: improper use could result in serious hazards. This appliance is intended for domestic use only, and must be used in accordance with the operating instructions contained in this booklet. The manufacturer disclaims all liability for damage deriving from the improper use of the appliance.**
- 3) Always disconnect the appliance from mains when filling up the water chamber or before any maintenance or care operation.
- 4) Before use, check that the mains voltage corresponds to the voltage indicated in the ratings plate on the bottom part of the appliance.
- 5) Connect your cleaner only to power outlets with a minimum of 10 amps making sure the outlet is earthed.
- 6) Do not aim the steam jet at mains outlets, live wires, or other electrified elements, which could result in damage and electric shock.**
- 7) Do not aim the steam jet at the appliance itself.
- 8) Do not tug at the power cord or the appliance itself, to disconnect from mains.
- 9) Do not run the appliance over the power cord as this may damage the insulation.
- 10) NEVER OPEN THE CAP BEFORE ALL THE WATER IN THE CHAMBER HAS BEEN USED.** This is indicated by the lack of steam output from the iron or other accessories. To refill, disconnect from mains and wait about 15 min to avoid sudden changes in temperature, then place a cloth over the cap and twist slowly to open, allowing any residual steam to escape.
- 11) Always disconnect all electrically operated appliances (hobs, ovens, refrigerators, hoods, etc) before steam cleaning. Wait until completely dry before reconnecting, as any residual moisture could result in shock hazard.**
- 12) Avoid skin contact with steam. High temperature may cause serious burns. Do not aim the water or steam jet at people or animals and do not use on surfaces or objects with a low resistance to the machine's operating temperature.
- 13) When using the machine, hold it by its handle only: it contains a steam-generator water chamber whose surface heats up during normal use. Users who are particularly sensitive to heat or suffer from heat-sensitive disorders should take particular care when handling this appliance.
- 14) Do not add detergents or other cleaning agents to the water in the chamber. Use plain water only.
- 15) Before storing the machine for long periods, check that there is no water in the water chamber.
- 16) Do not leave the iron on any flat surface without using the special mat.
- 17) Do not stand the iron upright.
- 18) Do not leave the appliance unattended while in operation. Keep it away from the reach of children and persons unfit to use it.**
- 19) Let the iron soleplate cool down before storing the appliance after ironing.
- 20) Do not attempt to use the machine if it appears to be faulty: Contact your dealer or an authorised Technical Service Centre.
- 21) If the overheating safety control is activated, the iron and the control panel will stop operating. In this case, the appliance can only be re-activated by qualified service personnel.
- 22) Do not expose the appliance to rain or moisture. Keep out of direct sunlight.
- 23) For all repairs, always contact your Dealer and have your appliance serviced at an authorised Technical Service Centre: Always use original spare parts and accessories so as to maintain the appliance in good working order and not invalidate the guarantee.

*This appliance meets all the requirements of the EN 55014 regulations on radio interference.

PLEASE SAVE THESE INSTRUCTIONS FOR FUTURE REFERENCE

ELECTRICAL REQUIREMENTS

Before using this appliance ensure that the voltage indicated on the product corresponds with the main voltage in your home, if you are in any doubt about your supply contact your local electricity company.

The flexible mains lead is supplied connected to a B.S. 1363 fused plug having a fuse of 13 amp capacity.

Should this plug not fit the socket outlets in your home, it should be cut off and replaced with a suitable plug, following the procedure outlined below.

Note: Such a plug cannot be used for any other appliance and should therefore be properly disposed of and not left where children might find it and plug it into a supply socket - with the obvious consequent danger.

N.B. We recommend the use of good quality plugs and wall sockets that can be switched off when the machine is not in use.

IMPORTANT: the wires in the mains lead fitted to this appliance are coloured in accordance with the following code:

GREEN AND YELLOW
BLUE
BROWN

EARTH
NEUTRAL
LIVE

As the colours of the wires in the mains lead of this appliance may not correspond with the coloured markings identifying the terminals in your plug, proceed as follows:

The wire which is coloured green and yellow must be connected to the terminal in the plug which is marked with the letter E or by the earth symbol \perp or coloured green or green and yellow.

The wire which is coloured blue must be connected to the terminal which is marked with the letter N or coloured black.

The wire which is coloured brown must be connected to the terminal which is marked with the letter L or coloured red.

When wiring the plug, ensure that all strands of wire are securely retained in each terminal. Do not forget to tighten the mains lead clamp on the plug. If your electricity supply point has only two pin socket outlets, or if you are in doubt, consult a qualified electrician.

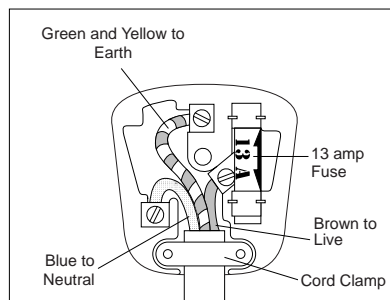
Should the mains lead ever require replacement, it is essential that this operation be carried out by a qualified electrician and should only be replaced with a flexible cord of the same size.

After replacement of a fuse in the plug, the fuse cover must be refitted. If the fuse cover is lost, the plug must not be used until a replacement cover is obtained. The colour of the correct replacement fuse cover is that of the coloured insert in the base of the fuse recess or elsewhere on the plug. Always state this colour when ordering a replacement fuse cover.

Only 13amp replacement fuses which are ASTA approved to B.S. 1362 should be fitted.

This appliance conforms to the Norms EN 55014 regarding the suppression of radio interference.

WARNING - THIS APPLIANCE MUST BE EARTHED

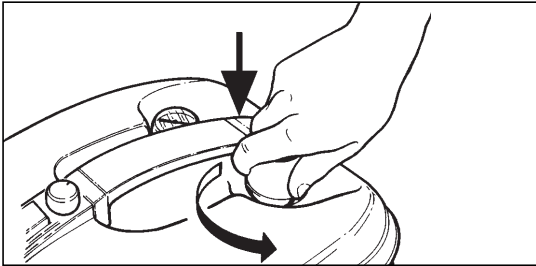


ASSEMBLING AND PREPARING FOR USE

FILLING THE STEAM-GENERATOR WATER CHAMBER

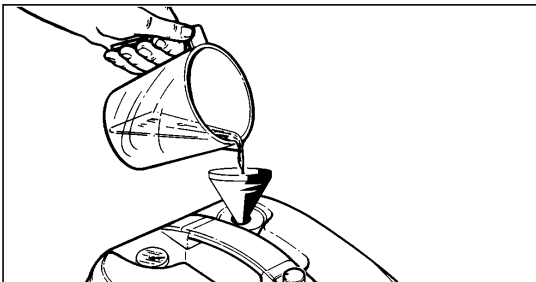
Always make sure that the appliance is disconnected from the mains power before you fill the water chamber or clean the appliance itself.

To open the water chamber, push and then twist the cap anticlockwise to unscrew (fig. 1).



1

Using the funnel fill the chamber with no more than 1.5 litres of tap water (a higher level could impair the operation of the machine) (fig. 2).



2

Reposition the cap and tighten until securely locked.

SAFETY CAP

Your machine is equipped with a safety cap that will turn idly as long as the chamber is pressurised even when the machine is cold.

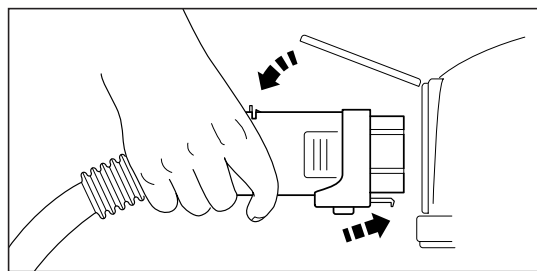
To open the water chamber, wait at least 25 minutes after use, then press on the cap while twisting anticlockwise to unscrew (fig.1).

To close, tighten the cap, then press firmly while twisting clockwise at the same time to lock.

FITTING CLEANING TOOLS ONTO THE MACHINE

To fit the flexible hose onto the machine (fig. 3):

- Open the hatch (6) on the appliance by lifting the flap upwards.
- Insert the flexible hose into its coupling, pushing in until the red tab on the underside of the hose clicks into place.
- Push the flap down and clamp it into its slot.
- Make sure the hose is firmly in place by trying to pull it away from its coupling.

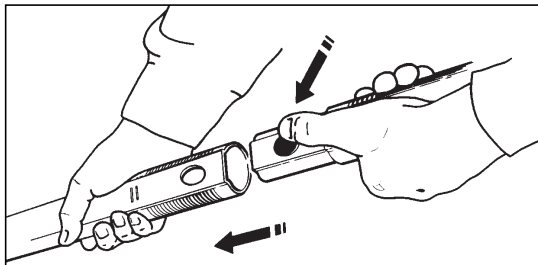


3

NB: To remove the hose lift the flap, press the red locking button on the underside of the hose and pull it away from the appliance.

All cleaning tools and accessories are fitted onto one or both extension tubes as required, proceeding as follows:

- firmly grasp the piece onto which to fit the accessory. Push the locking button with the thumb of the same hand.
- with your other hand, insert the accessory and slide it in carefully until the locking button pops out (fig. 4).



4

To remove the accessory, reverse the operation, taking care not to pinch the thumb holding down the button.

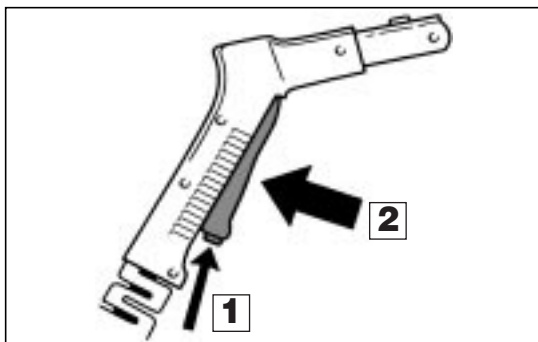
SWITCHING THE APPLIANCE ON

Connect the plug to a mains socket, switch the on/off button (5) to the on position and switch the steam generator on by means of its switch (4). The switch indicators (2 and 3) will come on.

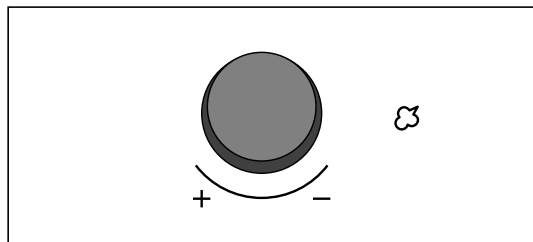
When the steam-generator indicator (3) goes out the machine is ready for use. This will take approx. 15 minutes.

While using, the indicator (3) will go on and off. This is completely normal.

For steam output, press button (1) and then keep trigger (2) depressed (fig. 5). When the trigger (2) on the handgrip is released, steam output will stop immediately.



5



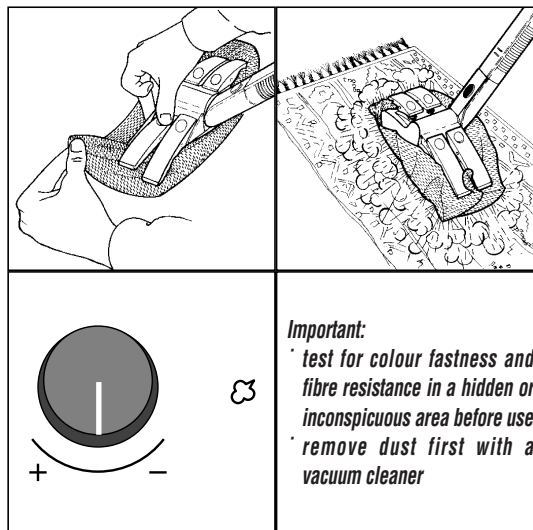
To increase the steam output turn the regulator clockwise in the direction of the '+'. When it will no longer turn, it is at maximum setting.

To decrease the steam output turn the regulator anti-clockwise in the direction of the '-'. When it will no longer turn, it is at minimum setting.

CLEANING

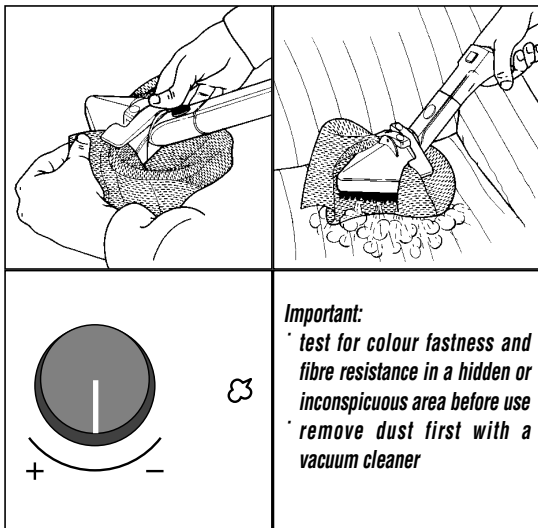
Carpets and rugs

Tools: carpet/floor brush plus cloth accessory fastened with the spring clips.
Steam output: medium setting



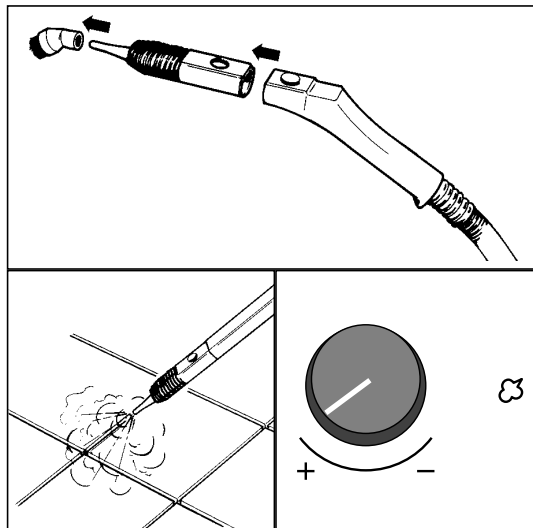
Armchairs, sofas, cushions, pillows, mattresses, car interiors

Tools: triangular brush plus cloth accessory fastened with the spring clips.
Steam output: medium setting



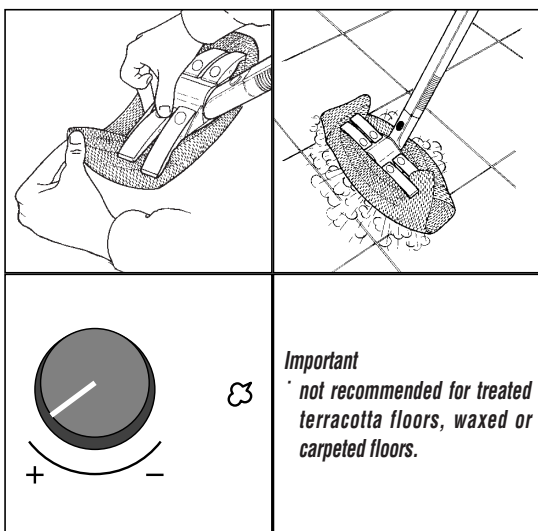
Tile grouting

Tools: crevice tool plus round brush
Steam output: maximum setting



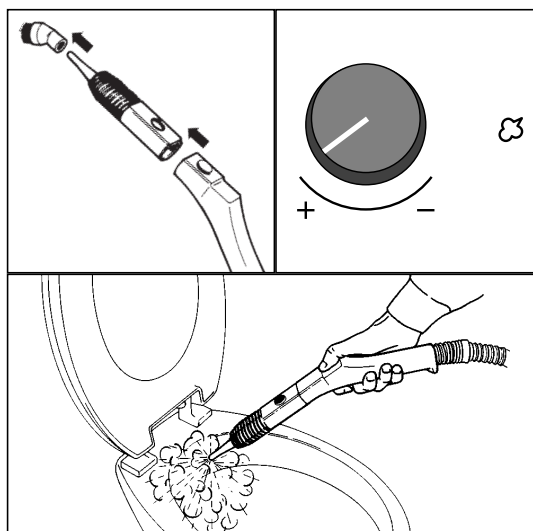
Hard floors

Tools: carpet/floor brush plus cloth accessory fastened with the spring clips
Steam output: maximum setting



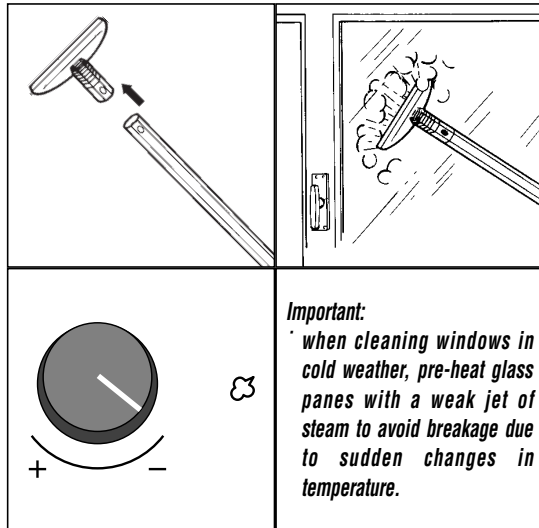
Bathroom (shower box, fixtures, hand basins, toilets)

Tools: crevice tool plus round brush directly fitted onto flexible hose or extension tube
Steam output: maximum setting



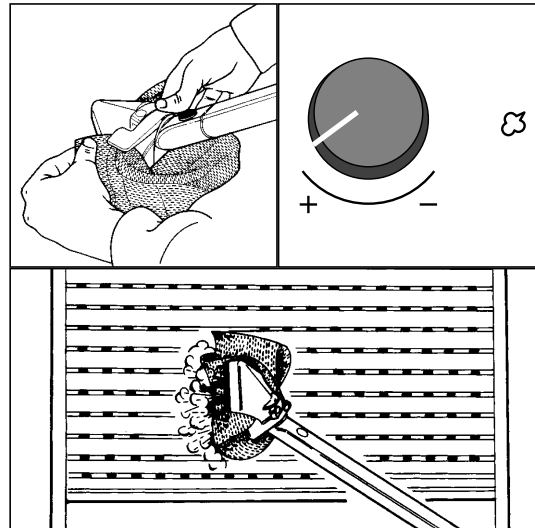
Mirrors, windows and car windows

Tools: extension tube plus squeegee
Steam output: lowest setting



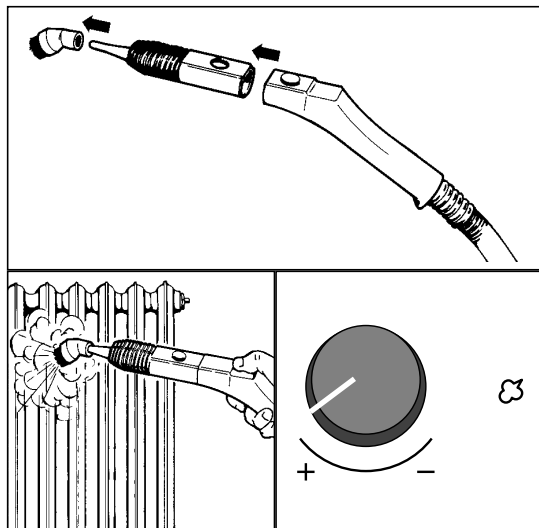
Roller shutters and vertical surfaces

Tools: triangular brush plus cloth accessory fastened with the spring clips
Steam output: maximum setting



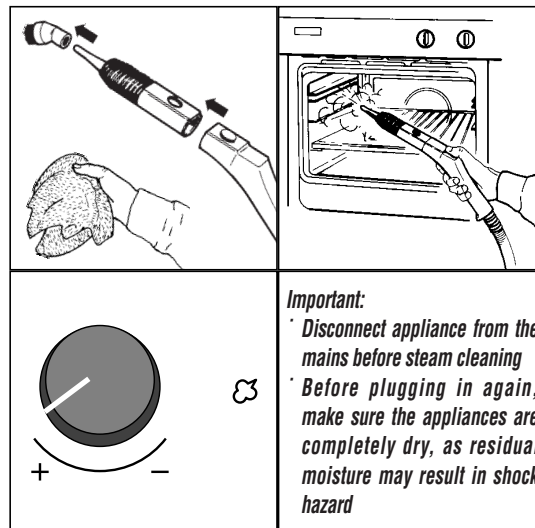
Central heating radiators, shutters, door frames and hard-to-reach places

Tools: extension tubes, crevice tool plus round brush
Steam output: maximum setting



Ovens, hobs, cookers, refrigerators and other home appliances

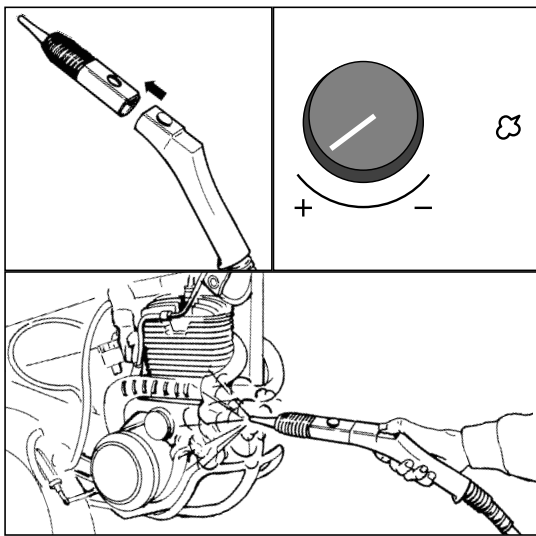
Tools: crevice tool plus round brush, then hand-held cloth
Steam output: maximum setting



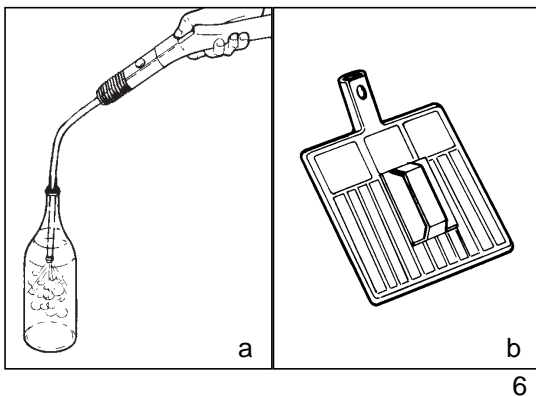
Car/motorcycle motors and bicycles

Tools: crevice tool

Steam output: maximum setting



A special bottle-cleaning nozzle (fig.6a) and wallpaper-removing accessory (fig.6b) are available from De'Longhi as an additional accessory.



REFILLING THE WATER CHAMBER

The water chamber can only be refilled once it is empty, indicated by the lack of steam output. Proceed as follows:

- Turn off the machine by depressing the on/off switch and disconnect from the mains.
- Wait approximately 25 minutes before refilling the chamber so as to avoid sudden changes in temperature.

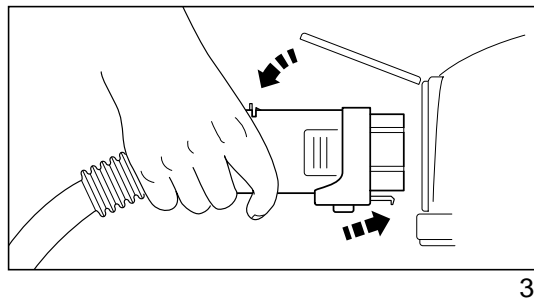
- Place a cloth over the cap before opening. Open slowly and carefully, allowing any residual steam to escape. Refill the tank as described above.

USING THE IRON SYSTEM

SETTING UP THE IRONING SYSTEM

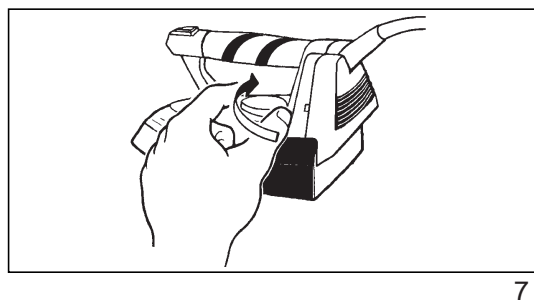
To connect the iron to the appliance:

- open the hatch (6) on the appliance by lifting the flap upwards;
- fit the iron coupling into its slot, pressing in firmly until the red tab on the underside of the hose clicks into place;
- with slight pressure clamp the flap into its slot;
- make sure the coupling is firmly in place by trying to remove it without pressing the locking button.



Connect the plug to a mains socket, switch the on/off button (5) to the on position and switch the steam generator on by its switch (4). The switch indicators (2 and 3) will come on

Adjust the iron thermostat to the required position (fig. 7).



Wait for the steam generator indicator (2) to go out before you start ironing.

While using the appliance, the steam indicator (2) will go on and off. This is completely normal.

Before using the iron for the first time, it is advisable to direct steam onto a cloth for some seconds to eliminate any impurities that may be inside the iron. To do this, press the "steam output" button (A, fig. 8) on the upper part of the iron.

Adjust the steam control (1) to obtain the quantity of steam required.

ADVICE FOR PERFECT IRONING RESULTS

Adjust steam output to the maximum setting by turning the steam control (1) clockwise. Simply pass the iron over the garment and press the steam button as required. The steam will power into the fabric to dampen it. Through experience you will discover how much steam is required.



8

Remember that very heavy fabrics or difficult creases need more steaming than lightly wrinkled garments, which require only minimum steaming.

DRY IRONING

Switch only the on/off switch (5), leaving the steam generator switch (4) off.

Wait for the indicator light on the iron to go out before ironing.

Fabric guide for perfect results

Acetate - Acrylics - Nylon



DRY-IRON VERY LIGHTLY

Polyester - Rayon



DRY-IRON ON REVERSE OF FABRIC AT LOWEST SETTING

Silk



DRY-IRON ON REVERSE OF FABRIC

Wool- Light cotton- Fine linen



DRY-IRON ON REVERSE OF FABRIC WITH A THIN CLOTH BETWEEN IRON AND FABRIC

Cotton - Fine linen - Starched fabrics



STEAM IRON WHITE AND LIGHT-COLOURED FABRICS ON RIGHT SIDE AND ON REVERSE OF FABRIC FOR DARK COLOURS

Linen



STEAM IRON ON REVERSE OF FABRIC - USE STEAM GENEROUSLY

SPECIFICATIONS

Steam generator power	1500W
Water chamber capacity	1.5 litres
Steam pressure	3.5 bar max
Steam-ready time	15 min.
Cleaning autonomy	approx. 40 min.

