

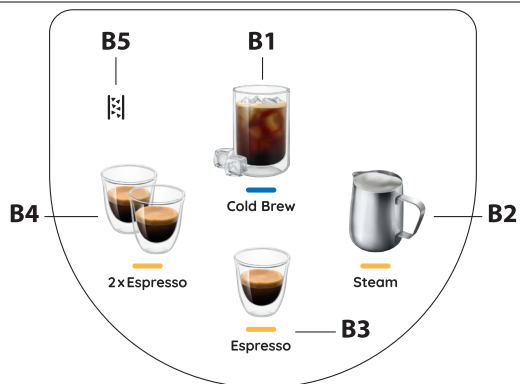
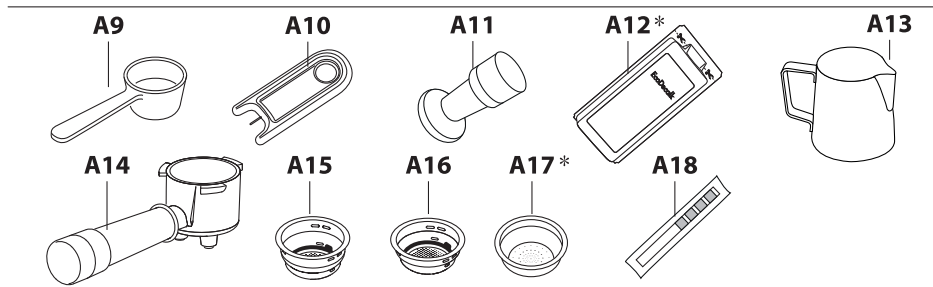
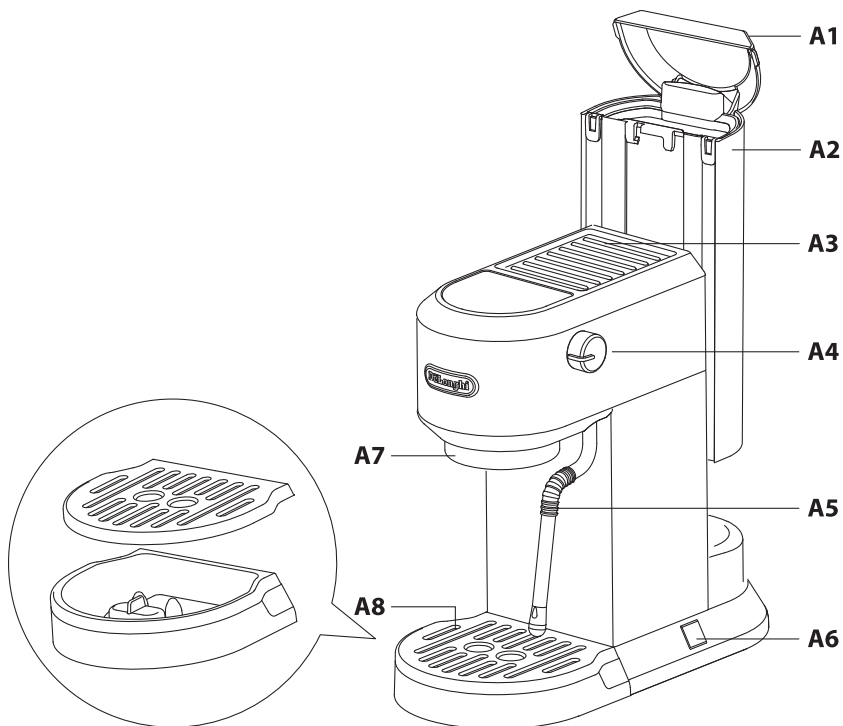


咖 啡 机

使
用
说
明
书

目 录

基本安全警告	2	5.制作冷萃咖啡	9
保修	3	6.定制咖啡饮品杯量	9
基本信息	3	7.制作热水	10
使用说明	3	8.菜单设置	10
使用之前	3	8.1 出厂默认值	11
机器检查	3	8.2 提示音启用/禁用	11
机器安装	3	8.3 测试水硬度	11
机器连接	4	9.清洁	11
机器设置	4	9.1 长时间不使用（超过3-4天）	12
与食品接触部分的清洗与维护	4	10.除垢	12
制作卡布奇诺咖啡和含牛奶咖啡	4	11.技术参数	13
1.机器部件描述	4	12. 指示灯说明	14
1.1 控制面板	5	13. 故障处理	15
2.首次使用	5		
3.制作意式浓缩咖啡	6		
3.1 如何使用易理包制作意式浓缩咖啡	7		
4.制作奶咖饮品	7		
4.1 清洁热水/蒸汽杆（A5）	8		



基本安全警告

- 有身体、感官或者心理障碍、或不具备足够的经验或者知识的人员（包括儿童）不允许使用本机器，除非有对他们的安全负责的人密切监督并进行指导。
 - 必须监督儿童，确保他们不玩玩该电器。
 - 指定用途：本电器设计和制造的用途是制作咖啡、含牛奶饮品和热水。在水箱中仅能使用饮用水。切勿用配件制作说明书上未表明的饮品。任何其他的用途都必须考虑是否适合以避免危险。制造商对于未正确使用该电器引起的损害概不负责。
 - 机器使用后，加热元件仍有热度，且根据使用时长，机器外壳的热度也可能会持续数分钟。
 - 彻底清洁所有部件，特别注意与牛奶接触的部件。
 - 请勿让儿童在无人监管的情况下清洗、维护本产品。
- 重要：**为防止损坏机器，请勿使用碱性清洁剂清洁；请使用软布，以及在适用情况下使用中性的清洁剂清洁机器。
- 本电器仅限家庭使用，不适用于如下场所：商店员工厨房、办公室或其他工作环境；牧场旅馆；旅馆、汽车旅馆或其他住宅性环境；家庭式旅馆。
 - 如果机器插头或电源线损坏，必须且只能由德龙指定的售后服务人员进行更换，以避免发生各种危险。
 - 带有可拆卸电源线的机器：避免机器背面的电源线连接器或插座被溅水。
- 重要：**表面为玻璃材质的机器：如果表面破裂，请勿使用。

- 使用过程中，切勿将咖啡机放在橱柜或厨房用具内。



切勿将咖啡机浸入任何液体中进行清洁。

这是一台电器设备，因此可能导致触电。

因此您应重视以下安全警告：

- 切勿用湿手或湿脚接触该电器。
- 切勿用湿手接触插头。
- 确保能随时接近电器使用的插座，必要时能拔下电器插头。
- 直接拔下电源插头，切勿拉扯电源线，以免损坏电源线。
- 要完全断开电器电源，将电源线从插座上拔下。
- 如果发现机器有故障，不要试图自己检修。关闭电源，拔下电源插头，并与德龙指定的售后服务中心联系。
- 在对机器进行外部清洁之前，请先关闭机器，拔下电源插头，并待机器冷却。

重要提示！

请将所有包装材料（塑料袋、泡沫塑料）置于儿童接触不到的位置。窒息危险。本产品可能含有较小的零部件。清洗和维护期间可能需要拆卸其中的一些小零件。请小心装卸，把小零件置于儿童够不到的地方。



烫伤危险！

本电器运作时可能会产生热水和蒸汽。

在操作过程中（自动冲洗、热饮输送、蒸汽输送、清洁等），请勿接触溅出的热水或者蒸汽。当机器运行时，杯架可能会变得非常热。

保修

我们为产品提供为期两年的保修，保修期从购买日开始计算。

在保修期内对于产品因生产过程引起的各种瑕疵，我们会视情况更换零件或整个产品。

申请保修必须将本产品 and 能够证明购买日期的证据(购货发票)一起交给授权的德龙维修站，本产品附有一张授权维修站名单。

请确认已将购货发票放置在安全的地方。

上述保修不包括以下内容：

- 由于使用不当而造成的产品损坏，如使用错误的电流、电压，将产品插入不合格的插座，或者人为损坏等。
- 正常使用引起的产品老化、磨损，但对产品的使用功能及价值影响不大。
- 按行业惯例定义的易损、易耗件。
- 如果产品经过未经授权的人员修理，或产品使用了非本公司(德龙)的零件，保修期立即终止。
- 非家庭使用(如工业、商业用)引起的损坏
- 在保修期内提供的服务并不影响保修期按时结束，保修期中更换的零件或整机的保修服务于本产品的保修期同时终止。
- 除非确有法律规定，本公司不对其他任何要求负责。同供货商的销售合同中规定的各项权利不受此保修的影响。

如果需要保修或维修，请与当地的维修站或就近的维修站联系。

基本信息

使用说明

使用本机器前，请仔细阅读此说明书。不遵守本使用说明书可能导致机器烫伤或损坏。

制造商对由此造成的损坏不负任何责任。

请注意：

此安全警告适用于所有德龙品牌的咖啡机。

请将手册与机器随附的说明书放在一起，方便查阅。

如果转让该机器给其他人，请确保将说明书同时附送。

使用本机器前，请阅读此安全警告。

使用之前

机器检查

打开包装后，确保机器表面完好无损，同时所有配件齐全。如果机器存在明显的损坏痕迹，切勿使用该机器。请与德龙售后服务中心联系。

机器安装

安装机器的时候，应该重视以下安全警告：

- 机器会释放出热气，因此将机器放置于工作台时，机器表面、侧面及靠墙部分需留出至少3厘米的空间，咖啡机上方需要留出至少15厘米的空间。
- 若有水渗入，会损坏机器。切勿将该机器放置在水龙头或者水槽附近。
- 若机器中的水结冰会损坏机器。切勿将机器放在一个室温可能低于零度的房间内。
- 电源线切勿放置在尖锐物质的边缘或接触热的物体表面（如电热板），这会损坏电源线。

机器连接

请检查并确认所使用的电源电压与该机器底部铭牌所标示的电源电压是否一致。本机器必须与具备有效的接地线的电源正确连接，且最小的额定电流只能为10安培。

如果电源插座与机器插头不匹配，需由有专业资质的技术人员来替换相匹配的插座。

机器设置

首次使用机器时，水回路中应无液体。机器在使用中会发出噪音。噪音会随着回路中液体的增加逐渐减小。

使用什么水

建议使用饮用水。

不要使用气泡水（碳酸水）或蒸馏水。

与食品接触部分的清洗与维护

- 首次使用本机器，或超过3天未使用本机器时，请参照说明书清洁机器以及与水、咖啡和牛奶接触的所有可拆卸配件。可在说明书中查阅哪些配件可用洗碗机清洗。
- 如本机器超过3天未使用，请在制作第一杯饮品前，参照使用说明书更换水箱中的水并冲洗水回路。如果超过3天不使用本机器，建议清空水箱。
- 在进行使用说明书中描述的和/或机器本身的显示屏或警示灯提示的所有清洗和维护操作时，请务必格外小心。

制作卡布奇诺咖啡和含牛奶咖啡

- 该机器既可用于制作牛奶饮品，也可用于制作植物奶饮品。

- 请不要使用生奶。
- 请使用巴氏杀菌、超高温灭菌奶或植物奶，并依照厂商指示的储存方法保存。
- 说明书中描述的清洁方法无法保证完全去除过敏原。
- 制作任何饮品前，请确保您的机器在以前没有使用过含有能使您产生过敏反应的过敏原或能使您产生不耐受反应的任何以牛奶或植物来源为基础的产品。
- 若制作完成后牛奶容器中剩有牛奶或植物奶，可将牛奶容器置于冰箱储存以便下次使用。请遵循饮品厂商指示的储存方法保存，且务必在两天内将饮品使用完毕。如若牛奶容器无需放入冰箱储存，请清空牛奶容器，并依照说明书中的描述清洁牛奶容器。

1. 机器部件描述

- A1. 水箱盖
- A2. 水箱
- A3. 杯盘
- A4. 蒸汽旋钮
- A5. 热水/蒸汽杆
- A6. 开/关按钮
- A7. 咖啡流出口
- A8. 滴水盘
- A9. 咖啡粉量勺
- A10. 清洁针
- A11. 压粉器
- A12. 除垢剂（可向德龙授权的售后服务中心购买）
- A13. 奶缸
- A14. 过滤器手柄
- A15. 2杯咖啡过滤器
- A16. 1杯咖啡过滤器

- A17. 易理包咖啡过滤器（可向德龙授权的售后服务中心购买）
- A18. 水硬度测试纸

1.1 控制面板

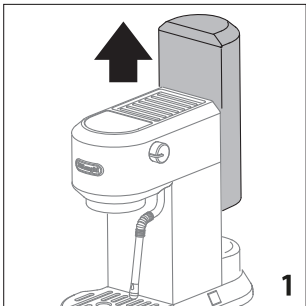
- B1. 冷萃咖啡按钮（带指示灯）
- B2. 蒸汽按钮（带指示灯）
- B3. 意式浓缩咖啡按钮（带指示灯）
- B4. 双倍意式浓缩咖啡按钮（带指示灯）
- B5. 除垢指示灯

请注意：我们不断改进产品，因此德龙公司保留一切更进产品技术参数和外观特点的权利，且恕不另行通知。

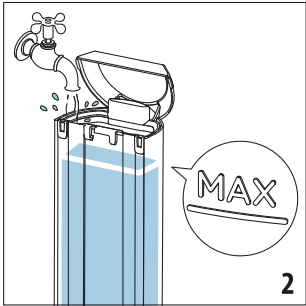
2.首次使用

在使用咖啡机之前，请确保机器的内部回路已冲洗干净。请按如下步骤操作：

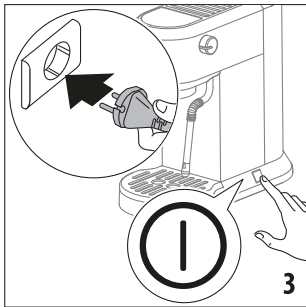
- 使用温水和洗涤剂清洁并擦干所有配件，包括水箱（A2）。
- 向上拉出水箱（如图1）。



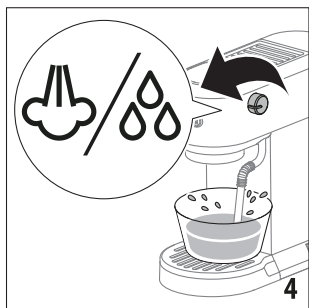
- 打开水箱盖（A1），往水箱（A2）中注入清水，注意不要超过-MAX-（最高水位）线（如图2）。
- 请注意：**须注入新鲜饮用水。不要使用气泡水（碳酸水）或蒸馏水。



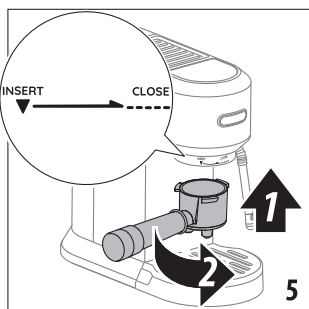
- 请注意：**切勿在水箱无水或未安装水箱的情况下使用机器。
- 将水箱装回机器，并轻轻按一下，可将水箱底部的阀门打开。
 - 将本机连接电源插座。按下开/关按钮（A6），打开机器（如图3）。



- 冷萃咖啡（B1）、蒸汽（B2）、意式浓缩咖啡（B3）和双倍意式浓缩咖啡（B4）指示灯闪烁（依次闪烁）。
- 当蒸汽指示灯（B2）处于长亮状态时，机器已准备好执行冲洗循环。
- 在热水/蒸汽杆（A5）的下方放置一个最小容积为500毫升的容器。
- 将蒸汽旋钮（A4）转至 ☕/☕ 位置（如图4）。



- 蒸汽指示灯（B2）处于长亮状态，机器执行冲洗循环。该操作是为了在打发奶泡或制作蒸汽前，清洁蒸汽回路。
- 等待意式浓缩咖啡（B3）和双倍意式浓缩咖啡（B4）指示灯闪烁，然后将蒸汽旋钮（A4）转至“○”位置。
- 清空容器。
- 意式浓缩咖啡（B3）、双倍意式浓缩咖啡（B4）和蒸汽（B2）指示灯闪烁。
- 将过滤器手柄（A14）安装到机器，与“插入（**INSERT**）”字样对齐，然后向右旋转，直到手柄与“关闭（**CLOSE**）”字样对齐（如图5）。



- 在过滤器手柄（A14）下方放置一个容器。
- 意式浓缩咖啡（B3）、双倍意式浓缩咖啡（B4）和蒸汽（B2）指示灯停止闪烁，且控制面板上所有的指示灯（B5除外）长亮时，按下双倍意

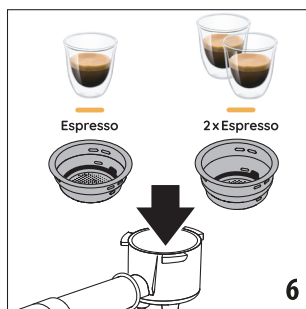
式浓缩咖啡按钮（B4）。机器从过滤器手柄释放热水。重复5次此操作。

- 往水箱中注入清水。
- 机器已准备就绪。

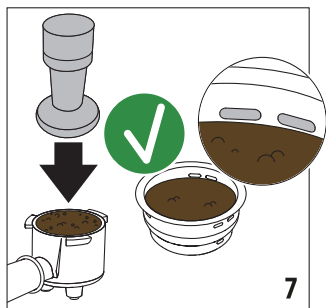
3.制作意式浓缩咖啡

请注意：每三天清空一次水箱（A2），彻底清洗并重新注入新鲜饮用水。

- 按下开/关按钮（A6），打开机器。如果机器处于待机模式，请按下控制面板上的任意按钮（B1、B2、B3或B4）。
- 控制面板上所有的指示灯（B5除外）处于长亮状态时，机器就可以使用了。在将过滤器手柄装入机器之前，请让少量清水从咖啡流出口（A7）流出，这一过程将冲洗咖啡流出口，以在萃取前稳定水温。
- 将2杯咖啡过滤器（A15）或1杯咖啡过滤器（A16）放入过滤器手柄（A14）中（如图6）。



- 使用量勺（A9）向咖啡过滤器中加入咖啡粉。制作意式浓缩须使用精磨咖啡粉。
- 在往咖啡过滤器中加入咖啡粉之前，请确保过滤器中没有上次制作咖啡时留下的咖啡残渣。
- 轻敲几次过滤器手柄，使咖啡粉均匀地分布在过滤器中。
- 使用压粉器（A11）用力向下按压。完成压粉后，确保咖啡粉量处于推荐的粉量水平（如图7）。



您可能需要再次添加咖啡粉。正确按压咖啡粉是制作意式浓缩咖啡的关键。如果按压过紧，咖啡流出速度太慢，咖啡油脂颜色过深。如果按压过松，咖啡流出速度太快，咖啡油脂太少。

（可参阅“13. 故障处理”）

• 将过滤器手柄四周多余的咖啡粉清理干净，然后将其安装到机器（如图5）。

• 将1个或2个杯子放置在过滤器手柄流出口下方的滴水盘（A8）上。

• 按下意式浓缩咖啡（B3）或双倍意式浓缩咖啡（B4）按钮。机器开始制作咖啡，完毕后自动停止。当机器在制作咖啡时，按一下之前按下的咖啡按钮即可随时中断制作过程。

• 若要拆卸过滤器手柄，请从右向左转动手柄。为避免飞溅，机器制作咖啡时，切勿取下过滤器手柄。制作完成后，请等待片刻。

请注意：建议您在制作咖啡前先预热咖啡杯：

用少量热水冲洗咖啡杯，或将过滤器（A15或A16）装入过滤器手柄（A14），然后将过滤器手柄（A14）安装到机器上，但咖啡过滤器内不添加咖啡粉。将稍后用来盛放咖啡的咖啡杯放置在过滤器手柄下方，按下双倍意式浓缩咖啡按钮（B4），释放热水预热咖啡杯。

在整个制作过程中应适当控制水温，确保萃取过程中的水温稳定性。本咖啡机有3种萃取温度可供选择。

萃取温度通常取决于咖啡豆的种类和烘焙程度：罗布斯塔咖啡豆适合较低的温度，阿拉比卡咖啡豆适合较高的温度。深度烘焙或轻度烘焙的咖啡豆适合的萃取温度也不同（如需更改温度，可参见菜单设置）。制作完成后，之前按下的按钮指示灯将闪烁5秒。如果要增加杯中的咖啡量，请在5秒内按下之前按下的咖啡按钮并保持几秒。制作过程会在几秒后自动停止。

3.1 如何使用易理包制作意式浓缩咖啡

• 将易理包咖啡过滤器（A17）（若未配备，可在德龙授权的售后服务中心处购买）放入过滤器手柄（A14）中。

• 放入易理包，使其尽可能位于过滤器的中间位置。请始终按照易理包包装上的说明正确放置易理包。

• 将过滤器手柄安装到机器。

• 将咖啡杯放置在过滤器手柄流出口下方。

• 按下意式浓缩咖啡（B3）按钮。

• 机器开始制作咖啡，制作完成后自动停止。

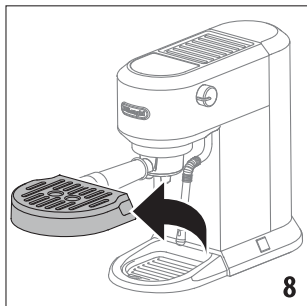
• 若要拆卸过滤器手柄，请从右向左转动手柄。

4. 制作奶咖饮品

• 按下开/关按钮（A6），打开机器。如果机器处于待机模式，请按下控制面板上的任意按钮（B1、B2、B3或B4）。

• 控制面板上所有的指示灯（B5除外）处于长亮状态时，机器就可以使用了。

• 如果使用高身玻璃杯或普通玻璃杯，请取下滴水盘（A8），并将玻璃杯放在滴水盘上（如图8）。



•按照前述章节的描述，使用足够容量的杯子来制作意式浓缩咖啡。

•将奶缸（A13）装满冷藏鲜牛奶。牛奶的体积会增加到原来的三倍。为了打出绵密顺滑的牛奶泡沫，请使用冷藏牛奶（大约5℃）。

请注意：务必使用从冰箱（4-6℃）中取出的冷藏鲜牛奶。

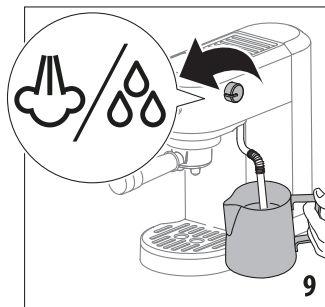
•按下蒸汽按钮（B2）。蒸汽按钮的指示灯闪烁。指示灯长亮时，机器已准备好制作蒸汽。

蒸汽准备就绪后，在打奶泡之前，将一个空容器放置在热水/蒸汽杆（A5）下方，然后将蒸汽旋钮（A4）转至 ☁/💧 位置并等待几秒，以消除回路中残留的空气。将蒸汽旋钮（A4）转至 “○” 位置并继续操作。

•将奶缸放置在热水/蒸汽杆（A5）下方。

•将蒸汽旋钮（A4）转至 ☁/💧 位置；机器开始制作奶泡（如图9）。

请注意：制作蒸汽的时间不宜超过60秒。



请注意：检查蒸汽旋钮是否转动到位。

为使牛奶起泡，请将热水/蒸汽杆放在奶液表面，这一步骤可将空气与牛奶和蒸汽混合。	保持热水/蒸汽杆与奶液表面接触，注意不要让太多空气进入，以免产生过大的气泡。	将热水/蒸汽杆浸入奶液下方，产生涡流。

•牛奶加热到所需温度（理想情况下为60℃）且达到所需的奶泡密度后，将蒸汽旋钮（A4）转至 “○” 位置。

•待蒸汽完全停止后，再取下奶缸。

•将打发好的牛奶倒入盛有事先准备好的意式浓缩咖啡的杯子中。卡布奇诺制作完成。

4.1 清洁热水/蒸汽杆（A5）

•等待热水/蒸汽杆冷却。使用后，务必要用干净的湿布擦拭热水/蒸汽杆，清除牛奶的残余沉积物。如果要进行深度清洁，我们推荐使用Eco MultiClean专用清洁剂（若未配备，可在德龙授权的售后服务中心处购买）。去除热水/蒸汽杆上的残留牛奶蛋白质和脂肪，可最大限度保证饮品卫生，同样的操作也适用于整个机器的清洁。

•使用蒸汽进行深度清洁：将蒸汽旋钮（A4）转至 ☁/💧 位置并保持5-10秒，然后关闭蒸汽旋钮，转至 “○” 位置。

•为确保蒸汽杆长时间的高效工作，我们建议使用清洁针（A10）确保出气孔未被堵塞（如图12）。

制作小贴士：推荐使用全脂牛奶。奶泡的外观和质地取决于所用牛奶或植物奶的性质。

一杯卡布奇诺的推荐奶量：100/150毫升。

牛奶发泡后，轻轻转动奶缸可以清除多余的气泡。

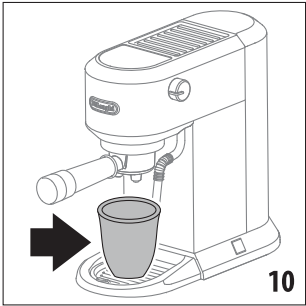
请注意：如需制作一杯以上的卡布奇诺，请先把所有的咖啡准备好，然后再制作卡布奇诺所需的奶泡。

如需退出蒸汽功能，请将蒸汽旋钮（A4）转至“○”位置或按下任意按钮；在这种情况下，意式浓缩咖啡（B3）和双倍意式浓缩咖啡（B4）指示灯会闪烁，表示必须再次关闭蒸汽旋钮（转至“○”位置）。

5.制作冷萃咖啡

请注意：在制作冷萃咖啡前，请清空水箱（A2），彻底冲洗并重新注入新鲜饮用水。

- 按下开/关按钮（A6），打开机器。如果机器处于待机模式，请按下控制面板上的任意按钮（B1、B2、B3或B4）。
- 如果使用高身玻璃杯或普通玻璃杯，请取下滴水盘（A8），然后将玻璃杯放在滴水盘上。
- 在玻璃杯中加入适量冰块。
- 将2杯咖啡过滤器（A15）放入过滤器手柄（A14）中（如图8）（1杯咖啡过滤器可用于改变饮品的浓度）。
- 使用咖啡粉量勺（A9）将咖啡粉倒入咖啡过滤器中（参考“制作意式浓缩咖啡”章节的描述），然后将过滤器手柄安装到机器上（如图5）。
- 在过滤器手柄流出口下方放置一个容器（如图10）。



- 按下冷萃咖啡按钮（B1），等待约3-5分钟。
- 冷萃咖啡制作完成。

制作完成后，之前按下的按钮指示灯将闪烁5秒。如果要增加杯中的咖啡量，请在5秒内按下之前按下的咖啡按钮并保持几秒。

6.定制咖啡饮品杯量


机器出厂时设置的默认咖啡杯量为标准咖啡杯量。如需改变咖啡杯量，请按以下步骤操作：

- 长按意式浓缩咖啡（B3）、双倍意式浓缩咖啡（B4）或冷萃咖啡（B1）按钮至少10秒，直到所选饮品的指示灯开始闪烁，表示机器进入设置模式；机器发出提示音（哔哔声）。
- 咖啡机开始制作咖啡。
- 当达到所需杯量时，再次按下意式浓缩咖啡（B3）、双倍意式浓缩咖啡（B4）或冷萃咖啡（B1）按钮：完成杯量设置。

	默认杯量	可设定杯量
 Espresso	35毫升	约15至90毫升
 2x Espresso	70毫升	约30至180毫升
 Cold Brew	150毫升	约80至180毫升

恢复默认杯量，请参见出厂默认值章节中的描述。

7.制作热水

- 按下开/关按钮（A6），打开机器。如果机器处于待机模式，请按下控制面板上的任意按钮（B1、B2、B3或B4）。
- 控制面板上所有的指示灯（B5除外）处于长亮状态时，机器就可以使用了。
- 如果使用高身玻璃杯或普通玻璃杯，请取下滴水盘（A8），然后将玻璃杯放在滴水盘上。
- 将玻璃杯放置在热水/蒸汽杆（A5）下方。
- 将蒸汽旋钮（A4）转至  位置。热水从热水/蒸汽杆释放。
- 如需停止释放热水，请将蒸汽旋钮（A4）转至“○”位置或按下任意按钮；在这种情况下，意式浓缩咖啡（B3）和双倍意式浓缩咖啡（B4）指示灯会闪烁，表示必须再次关闭蒸汽旋钮（转至“○”位置）。

请注意：建议每次制作热水的时间不超过60秒。

8.菜单设置

- 进入菜单：要进入设置菜单，请长按蒸汽（B2）和双倍意式浓缩咖啡（B4）按钮至少10秒，直到意式浓缩咖啡（B3）、双倍意式浓缩咖啡（B4）和蒸汽（B2）指示灯开始闪烁，同时冷萃咖啡（B1）保持长亮。

选择要调整的设置：

相关设置	按下按钮选择设置	按下按钮更改设置
冲泡温度	 Espresso	 Espresso 选择较低温度
		 2x Espresso 选择中等温度
		 Steam 选择较高温度
水硬度	 2x Espresso	 Espresso 选择较低硬度
		 2x Espresso 选择中等硬度
		 Steam 选择较高硬度
自动关机	 Steam	 Espresso 选择5分钟
		 2x Espresso 选择90分钟
		 Steam 选择3小时

•退出菜单：15秒无操作后，机器会自动地退出菜单设置程序，并且机器可以正常地使用了。
请注意：指示灯长亮表示当前设置，指示灯闪烁表示可用设置。


8.1 出厂默认值

- 若要进入设置菜单，请长按蒸汽（B2）和双倍意式浓缩咖啡（B4）按钮至少10秒。直到意式浓缩咖啡（B3）、双倍意式浓缩咖啡（B4）和蒸汽（B2）指示灯开始闪烁，同时冷萃咖啡（B1）保持长亮。
- 随即按下冷萃咖啡（B1）按钮。
- 随即按下双倍意式浓缩咖啡（B4）按钮。
- 意式浓缩咖啡（B3）、双倍意式浓缩咖啡（B4）和蒸汽（B2）按钮指示灯同时开始闪烁，确认已恢复为出厂设置。
- 控制面板上所有的指示灯（B5除外）处于长亮状态时，机器就可以使用了。

8.2 提示音启用/禁用

- 若要进入设置菜单，请长按蒸汽（B2）和双倍意式浓缩咖啡（B4）按钮至少10秒。直到意式浓缩咖啡（B3）、双倍意式浓缩咖啡（B4）和蒸汽（B2）指示灯开始闪烁，同时冷萃咖啡（B1）保持长亮。
- 随即按下冷萃咖啡（B1）按钮。
- 随即按下蒸汽（B2）按钮。
- 随即按下意式浓缩咖啡（B3）按钮可启用提示音，按下双倍意式浓缩咖啡（B4）按钮可禁用提示音。

8.3 测试水硬度

 (B5) 指示灯亮起，表示在根据水硬度设置的预定操作时间之后需要进行除垢。您还可以根据 不同地区供水的实际情况进行水硬度设置，在这种情况下，所需的除垢次数可能会更少。

- 从包装中取出“水硬度测试纸”（A18）



- 将试纸完全浸入一杯水中，持续大约一秒的时间。
- 从水中取出试纸，轻轻地摇晃一下。大约一分 钟后，根据水硬度的不同，试纸上会出现1、2、3或4个红色小方块：

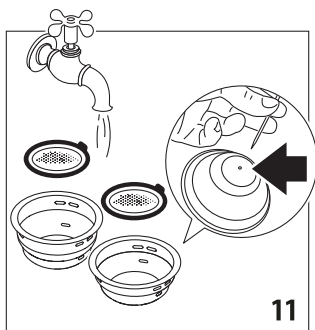
水硬度测试结果	等级
	1 软水
	2 中度硬水
 	3 硬水或极硬水

9.清洁

重要提示：由于咖啡机是一种电器设备，清洁时，切勿将机器浸入水中。在对机器进行维护或清洁之前，请先关闭电源，拔下插头，并等待机器冷却。
切勿使用化学溶剂、研磨性清洁剂或酒精清洗咖啡机。
不得用洗碗机清洗任何组件或配件。
切勿使用金属物体除垢或去除咖啡沉淀物，以避免擦伤金属表面或塑料表面。
如果机器超过一周没有使用，我们强烈建议您在再次使用之前进行冲洗程序。
以下咖啡机部件必须定期清洁并擦干：

•**滴水盘（A8）**：滴水盘配有一个红色的水位指示浮标，用于显示其中的水量。该水位指示浮标从滴水盘（A8）中浮出来前，必须清空滴水盘并清洗，否则水会从滴水盘的边缘溢出来，损坏机器和弄脏放置机器的桌面及其四周。取下滴水盘，倒空水并用布清洁滴水盘，擦干后重新装回机器，直到听到“咔嚓”一声。

•**咖啡过滤器（A15）、（A16）**：使用本机后，务必使用大量自来水进行冲洗。拉出清洁片，取出网孔过滤器，并用清水冲洗过滤器。确保过滤器上面的小孔没有被堵塞。在需要时或每月一次，使用清洁针进行清洁（如图11）。用布擦干。将网孔过滤器放回其底座，并尽量往里推。



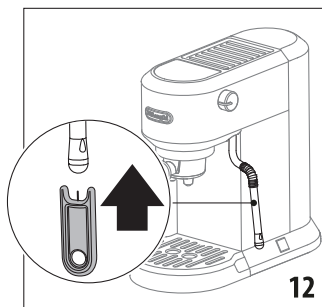
•**咖啡流出口（A7）**：每制作200杯咖啡后，建议从咖啡流出口释放约0.5升清水，以对咖啡流出口进行冲洗（不使用咖啡粉并按下双倍意式浓缩按钮）。

•**清洁水箱（A2）**：定期（大约每周一次）彻底清洁水箱（A2）。更换软水过滤器（如有）时也应清洁水箱。

取出水箱，使用新鲜饮用水进行冲洗。清空水箱，必要时使用温水（约40℃）和干净的无磨损性的布进行清洁。用流水彻底冲洗。往水箱中注入新鲜饮用水至-MAX-（最高位置）线，然后将水箱放回。

•**热水/蒸汽杆（A5）**：使用后，务必要用干净的湿布擦拭热水/蒸汽杆，清除牛奶的残余沉积物。将蒸汽旋钮（A4）转至☞/☞位置。热水通过热水/蒸汽杆流出。

待热水/蒸汽杆冷却后，使用清洁针对喷嘴的小孔（A10）进行清洁（如图12）。



9.1 长时间不使用（超过3-4天）

如果您在很长一段时间内（如节假日、休假期间）不会使用机器，请清空滴水盘和水箱并进行清洁。

请注意：再次打开机器时，请按照上述说明清洁水箱（参见“清洁水箱”章节的描述）。




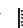


将水箱注满水，在制作任何饮品之前，运行3次冲洗循环：每次都让少量清水从咖啡流出口（A7）流出。


10.除垢

在除垢前，请阅读说明书和除垢剂包装上的安全警告。

仅可使用德龙除垢剂。如使用不合适的除垢剂和/或未按正确的除垢步骤进行除垢，引起的机器故障，不属于制造商保修范围。

除垢剂可能会损伤其脆弱表面。如果除垢剂意外溅出，请立即擦干。

- 当  (B5) 指示灯亮起时，表示需对机器进行除垢。
 - 拆下并清空滴水盘 (A8)，然后装回机器。
 - 清空水箱 (A2) (如有，请取下软水过滤器)。
 - 将除垢剂倒入水箱。加水至-MAX- (最高位置) 线。将水箱重新装回机器。
 - 确保过滤器手柄 (A14) 未安装，并在咖啡流出口 (A7) 和热水/蒸汽杆 (A5) 下方各放置一个容器。
 - 长按蒸汽 (B2) 和双倍意式浓缩咖啡 (B4) 按钮10秒。
 - 意式浓缩咖啡 (B3)、双倍意式浓缩咖啡 (B4) 和蒸汽 (B2) 指示灯闪烁。
 - 按下冷萃咖啡按钮 (B1)。
 - 将蒸汽旋钮 (A4) 转至  位置。
 -  (B5) 红色闪烁和蒸汽 (B2) 指示灯白色闪烁。
 - 除垢程序开始，除垢剂从热水/蒸汽杆 (A5) 或咖啡流出口 (A7) 流出。除垢程序通过自动执行一系列的冲洗及暂停，去除机器内部的水垢沉淀物，直到清空水箱。
- 请注意：**在除垢的过程中，如需清洁咖啡流出口，可以通过不时关闭蒸汽旋钮，从咖啡流出口释放少量除垢剂来进行清洁。
- 放水停止，同时  (B5) 和蒸汽 (B2) 指示灯停止闪烁； (B5) 红色长亮和冷萃咖啡 (B2) 指示灯保持蓝色长亮。
 - 冲洗并往水箱中注入清水，直至-MAX- (最高水位) 线；清空用于收集除垢溶液的容器，并将清空后的容器放回原位。
 - 按下冷萃咖啡按钮 (B1) 启动冲洗循环； (B5) 红色闪烁和冷萃咖啡 (B2) 指示灯蓝色闪烁。
 - 冲洗过程结束后，除垢完成，意式浓缩咖啡 (B3) 和双倍意式浓缩咖啡 (B4) 指示灯白色闪烁，表示必须关闭蒸汽旋钮 (转至“○”位置)。



- 将蒸汽旋钮 (A4) 转至“○”位置。
- 控制面板上所有的指示灯  (B5除外) 处于长亮状态时，机器就可以使用了。

请注意：在冲洗的过程中，如需清洁咖啡流出口，可以通过不时关闭蒸汽旋钮，从咖啡流出口释放少量清水来进行清洁。

11. 技术参数

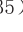

请参考机器铭牌。

12. 指示灯说明

指示灯	含义
意式浓缩咖啡（B3）、双倍意式浓缩咖啡（B4）和蒸汽（B2）指示灯闪烁	机器正在预热，准备制作咖啡
控制面板上所有的指示灯  （B5除外）保持长亮状态	机器准备制作咖啡
意式浓缩咖啡（B3）、双倍意式浓缩咖啡（B4）和蒸汽（B2）指示灯闪烁持续3秒	往水箱（A2）中加水至-MAX-（最高水位）线
蒸汽（B2）指示灯闪烁	机器正在预热，准备释放蒸汽
蒸汽（B2）指示灯保持长亮状态	机器准备释放蒸汽或机器需要恢复过程。 如果之前已按下蒸汽（B2）按钮：机器准备释放蒸汽，则将蒸汽旋钮（A4）转至  位置。 如果没有，请确保水箱正确安装且水箱中有水。 在蒸汽杆下方放置一个容器。转动蒸汽旋钮，等待蒸汽杆停止释放蒸汽（意式浓缩咖啡（B3）、双倍意式浓缩咖啡（B4）指示灯闪烁），然后关闭蒸汽旋钮。
按下开/关按钮，但所有指示灯都不亮	设备处于待机模式；按下任意按钮
意式浓缩咖啡（B3）和双倍意式浓缩咖啡（B4）指示灯闪烁	将蒸汽旋钮（A4）转至“○”位置

13. 故障处理

问题	原因	解决方案
无法制作意式浓缩咖啡	水箱（A2）里没有水	往水箱中加水
	咖啡过滤器（A15或A16）堵塞	按照“清洁咖啡过滤器”章节的描述在流水下冲洗咖啡过滤器
	水箱（A2）安装不正确，底部的阀门没有打开水	轻轻按下水箱，打开底部阀门
	水回路中出现水垢	对机器进行除垢
	咖啡粉研磨过细	使用意式浓缩咖啡专用的咖啡粉
意式浓缩咖啡从过滤器手柄（A14）的边缘滴出，而不是从咖啡流出口滴出	过滤器手柄插入不正确或手柄太脏	正确安装过滤器手柄，并尽可能将其旋紧
	垫圈失去弹性或太脏了	清洁咖啡流出口的垫圈联系售后服务中心更换垫圈
过滤器手柄（A14）无法安装到机器上	咖啡过滤器中加入了太多的咖啡粉	使用配备的量勺（A9），并确保使用的过滤器匹配制作的咖啡类型
咖啡油脂较少（咖啡从咖啡流出口流出的速度太快）	咖啡粉按压不充分	将咖啡粉按压紧实些
	加入的咖啡粉太少	增加咖啡粉的用量
	咖啡粉研磨得太粗糙	使用意式浓缩咖啡专用的咖啡粉
	使用了错误类型的咖啡粉	更换咖啡粉的类型
咖啡油脂颜色深（咖啡流出速度太慢）	咖啡粉挤压过紧	减轻压粉的力度
	加入的咖啡粉太少	减少咖啡粉的用量
	咖啡流出口（A7）堵塞	清洁咖啡流出口
	咖啡过滤器（A15或A16）堵塞	清洁咖啡过滤器
	咖啡粉研磨过细或受潮	使用意式浓缩咖啡专用咖啡粉，并确保咖啡粉没有受潮
制作完咖啡后，过滤器仍安装在咖啡流出口上		保持过滤器手柄（A14）安装状态，然后制作咖啡，最后再取下过滤器手柄

问题	原因	解决方案
机器不能制作任何饮品，意式浓缩咖啡（B3）、双倍意式浓缩咖啡（B4）和蒸汽（B2）指示灯闪烁几秒	水箱（A2）里没有水	往水箱中加水
	水箱（A2）安装不正确，底部的阀门没有打开水	轻轻按下水箱，打开底部阀门
控制面板上所有的指示灯（除了  B5）闪烁	温度过高警报	等待电器冷却 如果警告时间持续超过5分钟，请断开机器的电源，并联系德龙授权的服务中心。
制作卡布奇诺时，牛奶不起泡	牛奶不够冰	务必使用冰箱冷藏的牛奶
	蒸汽释放过程可能出了问题	回顾“制作奶咖饮品”章节的描述
	热水/蒸汽杆太脏	清洁热水/蒸汽杆（A5）
 （B5）指示灯亮起	机器需要除垢	请对机器进行除垢

FUNDAMENTAL SAFETY WARNINGS

- The appliance is not intended for use by persons (including children) with reduced physical, sensory or mental capabilities, or lack of experience and knowledge, unless they have been given supervision or instruction concerning use of the appliance by a person responsible for their safety.
- Children should be supervised to ensure that they do not play with the appliance.
- Designated use: this appliance is designed and made to prepare drinks based on coffee, milk and hot water. Use drinking water only in the tank. Never use the accessories to make drinks other than those described in these instructions. Any other use is considered improper and thus dangerous. The manufacturer is not liable for damage deriving from improper use of the appliance.
- The surface of the heating element remains hot after use and the outside of the appliance may retain the heat for several minutes depending on use.
- Clean all the components thoroughly, taking particular care with parts in contact with the milk.
- Cleaning and user maintenance shall not be made by children without supervision.

IMPORTANT: to prevent damage to the appliance, do not clean with alkaline detergents; use a soft cloth and, where applicable, neutral detergent.

- This is an household appliance only. It is not intended to be used in: staff kitchen areas in shops, offices and other working environments; farm houses; by clients in hotels, motels and other residential type environments; bed and breakfast type environments.
 - If the plug or power cord is damaged, it must be replaced by customer services only to avoid all risk.
 - Appliances with removable cord: avoid splashes of water on the power cord connector or socket at the back of the appliance.
- IMPORTANT:** Models with glass surfaces: do not use the appliance if the surface is cracked.
- The coffee maker must not be placed inside a cabinet or kitchen unit during use



Never clean the machine by immersing it in any kind of liquid.

FOR EUROPEAN MARKETS ONLY:

- This appliance can be used by children aged from 8 years and above if they have been given supervision or instruction concerning use of the appliance in a safe way and understand the hazards involved. Cleaning and user maintenance shall not be made by children unless they are above 8 years old and supervised. Keep the appliance and power cord away from children under 8 years of age.
- The appliance can be used by persons with reduced physical, sensory or mental capabilities or lack of experience and knowledge if they are supervised or have been given instruction concerning use of the appliance in a safe way and if they understand the hazards

involved.

- Children shall not play with the appliance.
- Always unplug the appliance when left unattended and before assembly, taking apart or cleaning.



Surfaces marked with this symbol become hot during use (the symbol is present in certain models only).

This is an electrical appliance and may cause electric shock.

You should therefore follow these safety warnings:

- Never touch the appliance with damp hands or feet.
- Never touch the plug with damp hands.
- Make sure the socket used is freely accessible at all times, enabling the appliance to be unplugged when necessary.
- Unplug directly from the plug only. Never pull the cord as you could damage it.
- To disconnect the appliance completely you must unplug it from the mains socket.
- If the appliance is faulty, do not attempt to repair. Turn it off, unplug from the mains socket and contact Customer Services.
- Before cleaning the appliance, turn it off, unplug from the mains socket and allow to cool.

Important!

Keep all packaging (plastic bags, polystyrene foam) away from children. **CHOKING HAZARD.** The appliance might contain small parts. Some of those small parts might be required to get disassembled during cleaning and maintenance operations. Handle with care and keep small parts out of reach of children.

Danger of burns!

This appliance produces hot water and steam may form while it is in operation.

During operation (automatic rinsing, hot drink delivery, steam delivery, cleaning), avoid contact with splashes of hot water or steam.

When the appliance is in operation, the cup shelf could become very hot.

GENERAL INFORMATION

Instruction for Use

Read all the Instruction for Use carefully before using the appliance. Failure to follow this Instruction for Use may result in burns or damage to the appliance.

The manufacturer is not liable for damage deriving from failure to respect this Instruction for Use.

Please note:

These safety warnings are valid for all De'Longhi coffee machines.

Keep this leaflet together with the instructions accompanying the appliance.

If the appliance is passed to other persons, they must also be provided with this Instruction for Use.

Before using the appliance, always read the safety warnings.

1. DESCRIPTION OF APPLIANCE

- A1. Water tank lid
- A2. Water tank
- A3. Cup warmer
- A4. Steam dial
- A5. Hot water/steam wand
- A6. On/Off switch
- A7. Brew unit
- A8. Drip tray
- A9. Spoon
- A10. Cleaning needle
- A11. Tamper
- A12. Descaler
- A13. Milk jug
- A14. Filter holder
- A15. 2 cups filter
- A16. 1 cup filter
- A17. Pod coffee filter
- A18. Water hardness test indicator paper

1.1 Control panel

- B1. Cold brew icon with indicator light
- B2. Steam icon with indicator light
- B3. Espresso icon with indicator light
- B4. 2 x Espresso icon with indicator light
- B5. Descaler indicator light

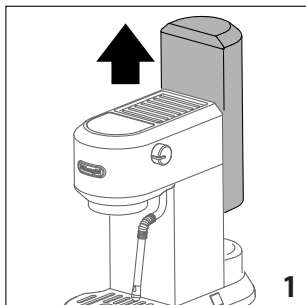
Please note: The accessories may vary in type and number depending on the model.

Optional cleaning accessories recommended by the manufacturer: for more information, visit www.delonghi.com.

2. FIRST USE

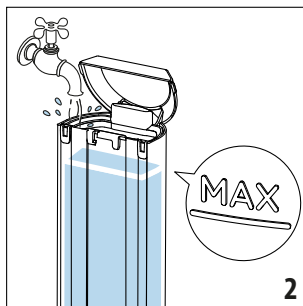
Before using the coffee maker, the internal circuits of the appliance must be rinsed. Proceed as follows:

- Wash and dry all accessories, including water tank (A2) with warm water and soap.
- Extract the water tank by pulling it upwards (fig. 1).



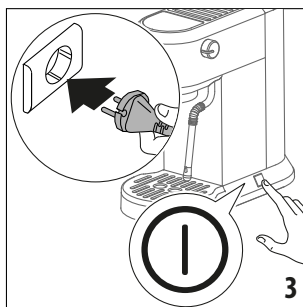
- Open the water tank lid (A1) and fill the water tank (A2) with fresh clean water, taking care not to exceed the MAX level (fig. 2).

Please Note: Fresh potable water is mandatory. Do not use sparkling (carbonated) or distilled water.

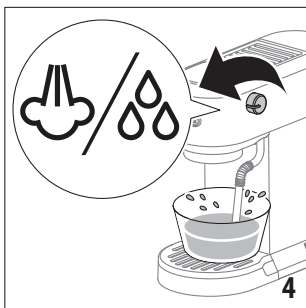


Please note: Never operate the appliance without water in the water tank or without the tank.

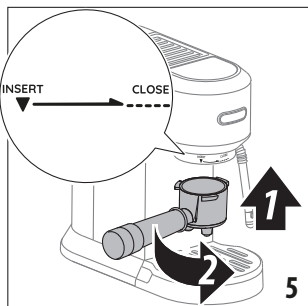
- Put the water tank back in the appliance, pressing lightly to open the valves located on the bottom of the tank.
- Connect the appliance to a mains socket. Turn the appliance on by pressing the On/Off switch (A6) (fig. 3).



- The Cold brew (B1), Steam (B2), Espresso (B3) and 2 x Espresso (B4) indicator lights blink (sequential blinking).
- When the Steam indicator light (B2) remains on steadily, the appliance is ready to perform a rinse cycle.
- Place a container with a minimum capacity of 500 ml under the hot water/steam wand (A5).
- Turn the steam dial (A4) to the ☺/☹ position (fig. 4).



- The steam indicator light (B2) blinks and the appliance perform a rinse cycle. This is to purge the steam circuit before frothing or steaming your milk.
- Wait until Espresso (B3) and 2 x Espresso (B4) indicator lights blink, then turn the steam dial (A4) to “○” position.
- Empty the container and Cold Brew (B1) indicator light remains on steadily.
- The Espresso (B3), 2 x Espresso (B4) and Steam (B2) indicator lights blink.
- Attach the fil er holder (A14) to the appliance aligning the fil er holder handle with “INSERT”, then turning the handle to the right until it is aligned in the “CLOSE” position (fi . 5).



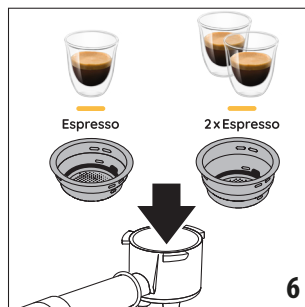
- Place a container under the fil er holder (A14).
- When the Espresso (B3), 2 x Espresso (B4) and Steam (B2) indicator lights stop blinking and all the indicator lights on the control panel (except [B5] B5) remain on steadily, press 2 x Espresso icon (B4). The appliance delivers water from the fil er holder. Repeat this operation 5 times.
- Fill the water tank with fresh water.
The appliance is ready for use.

3. MAKING ESPRESSO

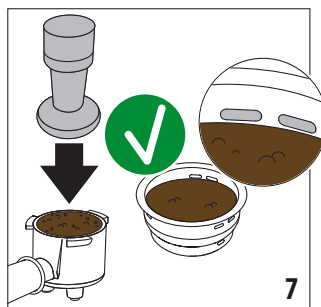
Please Note: Every three days, empty out the water tank (A2), rinse thoroughly and refill with fesh potable water.

- Turn the appliance on by pressing the On/Off switch (A6). If the appliance is in stand-by mode, press any icons (B1, B2, B3 or B4) on the control panel.

- When all the indicator lights on the control panel (except [B5] B5) remain on steadily, the appliance is ready for use. Before placing the fil er holder into the appliance, run a short fl w of water through the brew unit (A7). This will rinse the coffe spout and stabilise the temperature before the extraction.
- Place the 2 cups fil er (A15) or 1 cup fil er (A16) in the fil er holder (A14) (fi . 6).



- Fill the cup fil er with ground coffee using the spoon (A9). Make sure that you are using a fine grind, specific for espresso. Before filling the coffee fil er with ground coffee, make sure there are no coffee residues left in the fil er from the last time you made coffee.
- Tap the fil er holder several times to distribute the coffee evenly in the cup fil er.
- Press down firmly with the tamper (A11). Make sure the coffee is at the recommended dose level after tamping (fi . 7).



You may need to add some coffee. Tamping correctly the ground coffee is essential to obtain a good espresso. If you press too firm , the coffee will be delivered slowly and will be strong. If you press too lightly, the coffee will be delivered quickly and will be weak.

- Remove any excess coffee from the rim of the fil er holder and attach the fil er holder to the appliance (fi . 5).
- Place one cup or two cups on the drip tray (A8) under the fil er holder spouts.

- Press Espresso (B3) or 2 x Espresso (B4) icon. The appliance proceeds to make the coffee and delivery is interrupted automatically. While the appliance is making coffee, delivery can be interrupted at any moment by pressing the coffee icon pressed previously.
- To remove the filter holder, turn the handle from right to left. To avoid splashes, never remove the filter holder while the appliance is delivering coffee. Always wait for a few seconds after delivery.

Please note: You are recommended to warm the cups before making coffee:

Rinsing them with a little hot water or attach the filter holder (A14) to the appliance with the cup filters (A15 or A16) in place but without adding coffee, using the same cup as will later be used to make the coffee, press the 2 x Espresso (B4) icon and deliver hot water into the cup to heat it.

The water temperature is controlled during the entire preparation process to ensure its stability during the extraction step. The appliance has 3 infusion temperatures.

The temperature effectively utilized will depend typically on the variety of beans and the roast: Robusta beans require a lower temperature, and Arabica beans a higher temperature. The same applies for dark roasted beans or for light roasted beans, respectively (see the menu setting to change the temperature). At the end of delivery, the indicator light of the previously pressed icon blinks for 5 seconds. To increase the amount of coffee in the cup, press the coffee icon pressed previously for the desired time within 5 seconds.

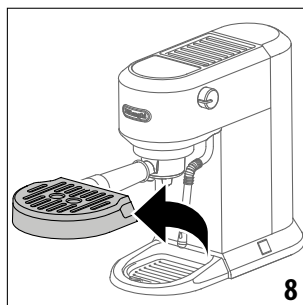
3.1 How to make espresso coffee using pods

- Place the pod coffee filter (A17) (not included, available for purchase at authorised service centres) in the filter holder (A14).
- Insert the pod, centring it as far as possible on the filter. Always follow the instructions on the pod pack to position the pod on the filter correctly.
- Attach the filter holder to the appliance.
- Place the cup under the filter holder spouts.
- Press Espresso (B3) icon.
- The appliance proceeds to make the coffee and delivery stops automatically.
- To remove the filter holder, turn the handle from right to left.

4. MAKING MILK BEVERAGES

- Turn the appliance on by pressing the On/Off switch (A6). If the appliance is in stand-by mode, press any icons (B1, B2, B3 or B4) on the control panel.
- When all the indicator lights on the control panel (except B5) remain on steadily, the appliance is ready for use.

- To use tall cups or glasses, remove the drip tray (A8) and stand the glasses on tray (figure 8).

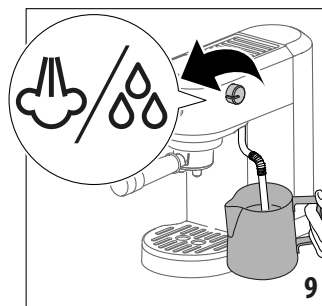


- Prepare the espresso coffee as described in the previous sections, using sufficiently large cups.
- Fill a jug (A13) with fresh cold milk. Milk will fill up to triple in volume. For a denser more even froth, you must use milk at refrigerator temperature (about 5°C).

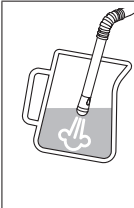
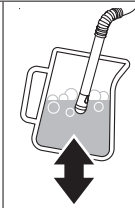

Please note: The use of fresh cold milk from the refrigerator (4-6°C/39.2-42.8 °F) is mandatory. Always place the jug in the fridge when not in use.

- Press the Steam icon (B2). The Steam indicator light blinks. When the indicator light comes steady, the appliance is ready to deliver steam. When steam is ready, before frothing milk, position an empty container under the hot water/steam wand (A5) and turn the steam dial (A4) to the ☁/88 position for a few seconds to eliminate any air left in the circuit. Turn the steam dial (A4) to the "O" position and proceed.
- Place the jug under the hot water/steam wand (A5).
- Turn the steam dial (A4) to the ☁/88 position; the appliance proceeds to make the froth (figure 9).

Please note: You should not deliver steam for more than 60 seconds.



Please note: Verify to turn the steam dial completely.

		
To froth the milk, rest the hot water/steam wand on the surface of the liquid. This mixes air with the milk and steam.	Keep the hot water/steam wand in contact with the surface, taking care not to let in too much air and create excessively large bubbles.	Immerse the hot water/steam wand below the surface of the liquid. This creates a vortex in the liquid.

- Once the milk is heated to the desired temperature (ideally 60°C) and desired cream density have been reached, turn the steam dial (A4) to “○” position.
- Wait till steam stops completely before removing the milk jug.
- Pour the frothed milk into the cups containing the espresso coffee prepared previously. The cappuccino is ready.

4.1 Cleaning the hot water/steam wand (A5)

- Wait that the hot water/steam wand cool down. After every use, remove with a soft damp cloth any milk residues from the hot water/steam wand. For perfect cleaning, we recommend Eco MultiClean: it ensures hygiene by removing milk proteins and fats and can be used to clean the whole machine.
- Use some steam for a deeper cleaning: turn the steam dial (A4) to ☞/☞ position for 5-10 seconds and then close to “○” position.
- To maintain the better usability of the steam wand, we suggest to use the cleaning needle (A10) for opening the hole of the nozzle (fig 12)

Barista tips: Whole milk is recommended. The appearance and texture of froth depending on the nature of the dairy milk or vegetable beverages utilized.

Recommended quantity for each cappuccino: 100/150 ml.

After frothing the milk, eliminate unwanted bubbles by swirling the jug gently.

Please note: To prepare more than one cappuccino, first make all the coffees then at the end prepare the frothed milk for all the cappuccinos.

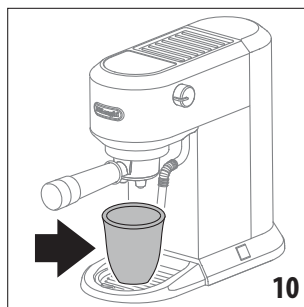
To exit the steam function, turn the steam dial (A4) to “○” position or press any icons; in this case, the Espresso (B3) and 2 x Espresso (B4) indicator lights blink to indicate that the steam

dial must be closed again (“○” position).

5. MAKING COLD BREW

Please note: before making cold brewed drinks, empty out the water tank (A2), rinse thoroughly and refill with fresh potable water.

- Turn the appliance on by pressing the On/Off switch (A6). If the appliance is in stand-by mode, press any icons (B1, B2, B3 or B4) on the control panel.
- To use tall cups or glasses, remove the drip tray (A8) and stand the glasses on tray.
- Add a few ice cube to the glass.
- Place the 2 cups filter (A15) in the filter holder (A14) (fig . 8) (1 cup filter can be used changing the length of beverage).
- Fill the cup filter with ground coffee using the spoon (A9) (see “Making espresso” paragraph) and attach the filter holder to the appliance (fig . 5).
- Place the glass under the filter holder spouts (fig . 10).






- Press Cold brew icon (B1) and wait 5 minutes.
- The Cold brew is ready.

6. PROGRAMMING THE QUANTITIES OF COFFEE IN THE CUP

The appliance is set by default to automatically deliver standard quantities. To change these quantities, proceed as follows:

- Press the Espresso (B3), 2 x Espresso (B4) or Cold brew (B1) icons and hold for a least 10 seconds, until the indicator light relative to the selected drink starts to blinks, indicating that the appliance is in programming mode; the appliance emits a acoustic signal (beep).
- The coffee maker starts delivering coffee.
- When the desired quantity has been reached, press the Espresso (B3), 2 x Espresso (B4) or Cold brew (B1) icons again: the quantity is programmed.

	Default quantity	Programmable quantity
 Espresso	35ml	from ≈15 to ≈90 ml
 2 x Espresso	70ml	from ≈30 to ≈180 ml
 Cold Brew	150ml	from ≈80 to ≈180 ml

To return to the quantities of default see instructions in section Default values.













7. MAKING HOT WATER

- Turn the appliance on by pressing the On/Off switch (A6). If the appliance is in stand-by mode, press any icons (B1, B2, B3 or B4) on the control panel.
- When all the indicator lights on the control panel (except B5) remain on steadily, the appliance is ready for use.
- To use tall cups or glasses, remove the drip tray (A8) and stand the glasses on tray.
- Place the glass under the hot water/steam wand (A5).
- Turn the steam dial (A4) to ☞/☞ position. Hot water is delivered from the hot water/steam wand.
- To exit the hot water function, turn the steam dial (A4) to "O" position or press any icons; in this case, the Espresso (B3) and 2 x Espresso (B4) indicator lights blink to indicate that the steam dial must be closed again ("O" position).

Please note: You should not deliver hot water for more than 60 seconds.

8. MENU SETTINGS

- Access the menu: to enter the settings menu, press the Steam (B2) and 2 x Espresso (B4) icons and hold for a least 10 seconds, until the Espresso (B3), 2 x Espresso (B4) and Steam (B2) indicator lights starts to blinks and Cold brew (B1) indicator light remain on steadily.
- Select the setting to be adjusted:

Corresponding setting	Press to select the setting	Press to change the setting
Brewing temperature	 Espresso	 Espresso to select LOW temperature
		 2 x Espresso to select MEDIUM temperature
		 Steam to select HIGH temperature
Water hardness	 2 x Espresso	 Espresso to select LOW hardness
		 2 x Espresso to select MEDIUM hardness
		 Steam to select HIGH hardness
Auto-off	 Steam	 Espresso to select 5 minutes
		 2 x Espresso to select 90 minutes
		 Steam to select 3 hours

- Exit the menu: after 15 seconds of inactivity, the machine automatically exits the settings menu and is ready for use.

Please note: Indicator light remain on steadily indicates the currently setting, indicator light blinks indicate the available settings.

8.1 Default values





- To enter the settings menu, press the Steam (B2) and 2 x Espresso (B4) icons and hold for a least 10 seconds.
- Press Cold brew (B1) icon.
- Press 2 x Espresso (B4) icon.
- Espresso (B3), 2 x Espresso (B4) and Steam (B2) indicator

lights starts to blink simultaneously to confirm that the original settings have been restored.






- When all the indicator lights on the control panel (except B5) remain on steadily, the appliance is ready for use.

8.2 User statistics

- To enter the settings menu, press the Steam (B2) and 2 x Espresso (B4) icons and hold for a least 10 seconds.
- Press Cold brew (B1) icon.
- Press Espresso (B3) icon.
- All the indicator lights on the control panel (except B5) blink.
- Bring up the required statistical data by pressing one of the four icons as illustrated in the following table:

Icons	Data
 Espresso	Total count of Espresso (single and double)
 2x Espresso	Total count of descale cycles
 Steam	Total count of hot water/steam
 Cold Brew	Total count of Cold brew

- A indicator light remains on for 5 seconds to indicate the number of operations according to the following table:


Indicator light	Number of operations
 Steam	100-999
 Espresso	1000-2999
 2x Espresso	3000-5999
 Cold Brew	6000-10999
	>11000





8.3 Acoustic signal enable/disable

- To enter the settings menu, press the Steam (B2) and 2 x Espresso (B4) icons and hold for a least 10 seconds.
- Press Cold brew (B1) icon.
- Press Steam (B2) icon.
- Press Espresso (B3) icon to enable the acoustic signal and 2 x Espresso (B4) icon to disable.

8.4 Measuring water hardness

The B5 (B5) indicator light comes on to require descaling following a predetermined period of operation that depends on a water hardness setting. The appliance can also be programmed according to the actual hardness of the local water supply, in which case descaling may be required less frequently.

- Remove the water hardness test indicator paper (A18)  from its pack.
- Immerse the paper completely in a glass of water for one second.
- Remove the paper from the water and shake lightly. After about a minute, 1, 2, 3, or 4 red squares form, depending on the hardness of the water:

Water Hardness Test Result	Level
	1 soft water
	2 medium water
 	3 hard or very hard water

9. CLEANING

Important: While cleaning, never immerse the coffee maker in water. It is an electrical appliance. Before maintenance or cleaning of the appliance, turn it off, unplug from the main socket and allow to cool.

Do not use solvents, abrasive detergents or alcohol to clean the coffee appliance.

None of the components or accessories is dishwasher safe.

Do not use metal objects to remove encrustations or coffee deposits as they could scratch metal or plastic surfaces.

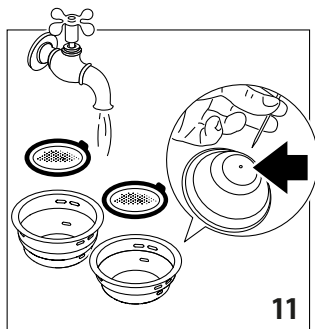
If the appliance is not used for more than one week, before using it again, we strongly recommend you perform a rinse cycle.

The following parts of the appliance must be cleaned and dry regularly:

- **drip tray (A8):** The drip tray is fit ed with a level indicator (in red) showing the amount of water it contains. Before the indicator protrudes from the cup grid, the drip tray (A8) must be emptied and cleaned, otherwise the water may overflow the edge and damage the appliance, the surface it rests on or the surrounding area.
Remove the drip tray, empty the water and clean the drip tray with a cloth, dry and then reassemble the drip tray until you hear a 'click'.
- **cups filter (A15), (A16):** After using the appliance, always rinse the fil ers under abundant running water. Extract the perforated fil er by pulling the tab and rinse the fil ers un-

der running water.

Make sure the holes are not blocked. If necessary or once a month, clean with a needle (fig. 11). Wipe dry with a cloth. Reposition the perforated filter in its seat and push fully home.



11

- **brew unit (A7):** After every 200 coffees, rinse the brew unit by delivering about 0.5 l of water from the brew unit (press the 2 x Espresso icon without using ground coffee).

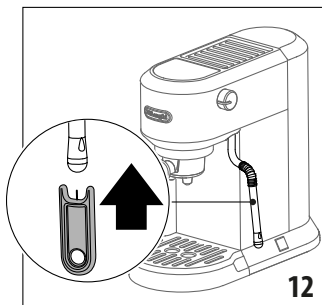
- **cleaning the water tank (A2):** Periodically (about once a week) thoroughly clean the water tank (A2). Also whenever you replace the water softener filter (if present).

Take out the water tank and rinse with fresh potable water. Empty the water tank and clean with warm water (40°C/104°F approx), wiping if necessary with a clean, non-abrasive cloth. Rinse thoroughly under running water.

Fill the water tank with fresh potable water up to the MAX level and return it to the machine.

- **hot water/steam wand (A5):** After every use, remove with a soft damp cloth any milk residues from the hot water/steam wand. Turn the steam dial (A4) to ☞/☞ position. The appliance delivers water from the hot water/steam wand.

Wait that the hot water/steam wand cool down and open the hole of the nozzle with the cleaning needle (A10) (fig. 12).



12

9.1 Switching off for extended periods (more than 3-4 days)

If the machine is not going to be used for any length of time (e.g. holidays, periods of absence) empty out and clean the drip tray and the water tank.

Please note: When turning the machine on again, clean the water tank as described above (see "cleaning the water tank").

Fill the water tank and, before making any kind of drink, run 3 rinse cycles: each time run a short flow of water through the brew unit (A7).

10. DESCALING

Before use, read the instructions and the labelling on the descaler pack.

It is important to use De'Longhi descaler only. Using unsuitable descaler and/or performing descaling incorrectly may result in faults not covered by the manufacturer's guarantee.



Descaler could damage delicate surfaces. If the product is accidentally spilt, dry immediately.

- Descale the appliance when the ☞ (B5) indicator light turns on.
- Remove and empty the drip tray (A8), then reposition it in the appliance.
- Empty the water tank (A2) (if present, remove the water softener filter).
- Pour the descaler into the water tank. Add water up to level MAX. Now reposition the water tank in the appliance.
- Make sure the filter holder (A14) is not attached and position a recipient under the hot brew unit (A7) and hot water/steam wand (A5).
- Press and hold the Steam (B2) and 2 x Espresso (B4) icons for 10 seconds.
- Espresso (B3), 2 x Espresso (B4) and Steam (B2) indicator lights blink.
- Press Cold brew icon (B1).
- Turn the steam dial (A4) to ☞/☞ position.
- The ☞ (B5) and Steam (B2) indicator lights blink.
- The descale programme starts and the descaler liquid comes out of the hot water/steam wand (A5) and brew unit (A7). The descale programme removes limescale deposits from inside the appliance by automatically performing a series of rinses and pauses until the water tank is empty.

Please note: During descaling, to clean the brew unit, close the steam dial from time to time to deliver small quantities of descaler from the coffee outlet.

- Delivery stops and the ☞ (B5) and Steam (B2) indicator lights stop blinking; ☞ (B5) and Cold brew (B2) indicator lights remain on steadily.
- Rinse and fill the water tank to MAX level with fresh water

and empty the recipient used to collect the descaler solution and replace it empty.



- Press Cold brew icon (B1) to start the rinse cycle;  (B5) and Cold brew (B2) indicator lights blink.
- When the rinsing process is over, the descaling is complete and the Espresso (B3) and 2 x Espresso (B4) indicator lights blink to indicate that the steam dial must be closed ("○" position).
- Turn the steam dial (A4) to "○" position
- When all the indicator lights on the control panel (except  B5) remain on steadily, the appliance is ready for use.

Please note: During rinse cycle to clean the brew unit, close the steam dial from time to time to deliver small quantities of water from the coffee outlet.


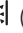
11. TECHNICAL DATA

Voltage:	See rating label
Absorbed power:	See rating label
Max. water tank capacity:	1.6 l
Size LxDxH:	189x346x328 mm
Weight:	4.5 kg

12. EXPLANATION OF INDICATOR LIGHTS

Indicator lights	Explanation
The Espresso (B3), 2 x Espresso (B4) and Steam (B2) indicator lights blink	The appliance is heating up to make coffee
All the indicator lights on the control panel (except  B5) remain on steadily	The appliance is ready to make coffee
The Espresso (B3), 2 x Espresso (B4) and Steam (B2) indicator lights blink for 3 seconds.	Fill the water tank (A2) up to level MAX
Steam (B2) indicator light blinks	The appliance is heating up to deliver steam
Steam (B2) indicator light remain on steadily	The appliance is ready to deliver steam or the appliance require the recovery process. If Steam (B2) icon previously pressed: machine is ready to deliver steam, then turn the steam dial (A4) to  position. If no, verify water tank position and water presence. Place a container under steam wand. Turn the steam dial and wait until delivery from steam wand stops (Espresso (B3), 2 x Espresso (B4) indicator lights blink), then close steam dial.
On/Off switch pressed but all leds turned off	The appliance is in stand-by mode; press any icons
The Espresso (B3) and 2 x Espresso (B4) indicator lights blink	Turn the steam dial (A4) to "○" position

13. TROUBLESHOOTING

Problem	Cause	Solution
No espresso coffee is delivered	No water in the water tank (A2)	Fill the water tank
	Blockage in the cup fil ers (A15) or (A16)	Rinse the cup fil ers under running water; see "Cleaning cups fil er".
	The water tank (A2) is not properly in place and the valves at the bottom are not open	Press down lightly on the tank to open the valves at the bottom
	Limescale in the water circuit	Descale the appliance
	The pre-ground coffee is too fin	Use only pre-ground coffee for espresso coffee makers
The espresso coffee drips from the edges of the fil er holder (A14) rather than the holes	The fil er holder has been inserted incorrectly or is dirty	Attach the fil er holder correctly and rotate firmly as far as it will go
	The brew unit gasket has lost elasticity or is dirty	Clean the brew unit gasket. Have the brew unit gasket replaced by Customer Service
The fil er holder (A14) cannot be attached to the appliance	Too much coffee has been placed in the fil er	Use the spoon (A9) supplied and make sure you are using the correct fil er for the type of preparation
The coffee crema is too light (delivered from the spout too fast)	The pre-ground coffee is not pressed down firmly enough	Tamp the pre-ground coffee more firmly
	There is not enough pre-ground coffee	Increase the quantity of pre-ground coffee
	The pre-ground coffee is too coarse	Use only pre-ground coffee for espresso coffee makers
	The wrong type of pre-ground coffee is being used	Change the type of pre-ground coffee
The coffee froth is too dark (delivered from the spout too slowly)	The pre-ground coffee is pressed down too firmly	Press the coffee down less firmly
	There is not enough pre-ground coffee	Reduce the quantity of pre-ground coffee
	The espresso brew unit (A7) is blocked	Clean the brew unit
	The cup fil ers (A15) or (A16) are blocked	Clean the cup fil er
	The pre-ground coffee is too fin	Use only pre-ground coffee for espresso coffee makers
	The pre-ground coffee is too fine or dam	Use pre-ground coffee for espresso coffee makers only and make sure it is not too damp
After delivering coffee, the fil er remains attached to the brew unit		Insert the fil er holder (A14) again, deliver coffee, then remove the fil er holder
The appliance will not make any drink and the Espresso (B3), 2xEspresso (B4) and Steam (B2) indicator lights blink for a few seconds	No water in the water tank (A2)	Fill the tank with water
	The water tank (A2) is not properly in place and the valves at the bottom are not open	Press down lightly on the tank to open the valves at the bottom
All the indicator lights on the control panel (except  B5) blink	Overtemperature alarm	Wait that the appliance cool down
No milk froth is formed when making cappuccino	Milk not cold enough	Always use milk at refrigerator temperature
	Steaming procedure could be wrong	Review the "making milk beverage" paragraph
	Hot water/steam wand dirty	Clean the hot water/steam wand (A5)
The  (B5) indicator light turns on	Descaling is required	Perform descaling



★若有任何需求请与下述地址联系：

☆德龙电器（上海）有限公司

地址：上海市普陀区凯旋北路1188号38层01-05室

电话：(021) 3135 8858 传真：(021) 3135 8262 邮编：200063

客服热线：400 827 1668 网址：<https://www.delonghi.com/zh-cn>

