

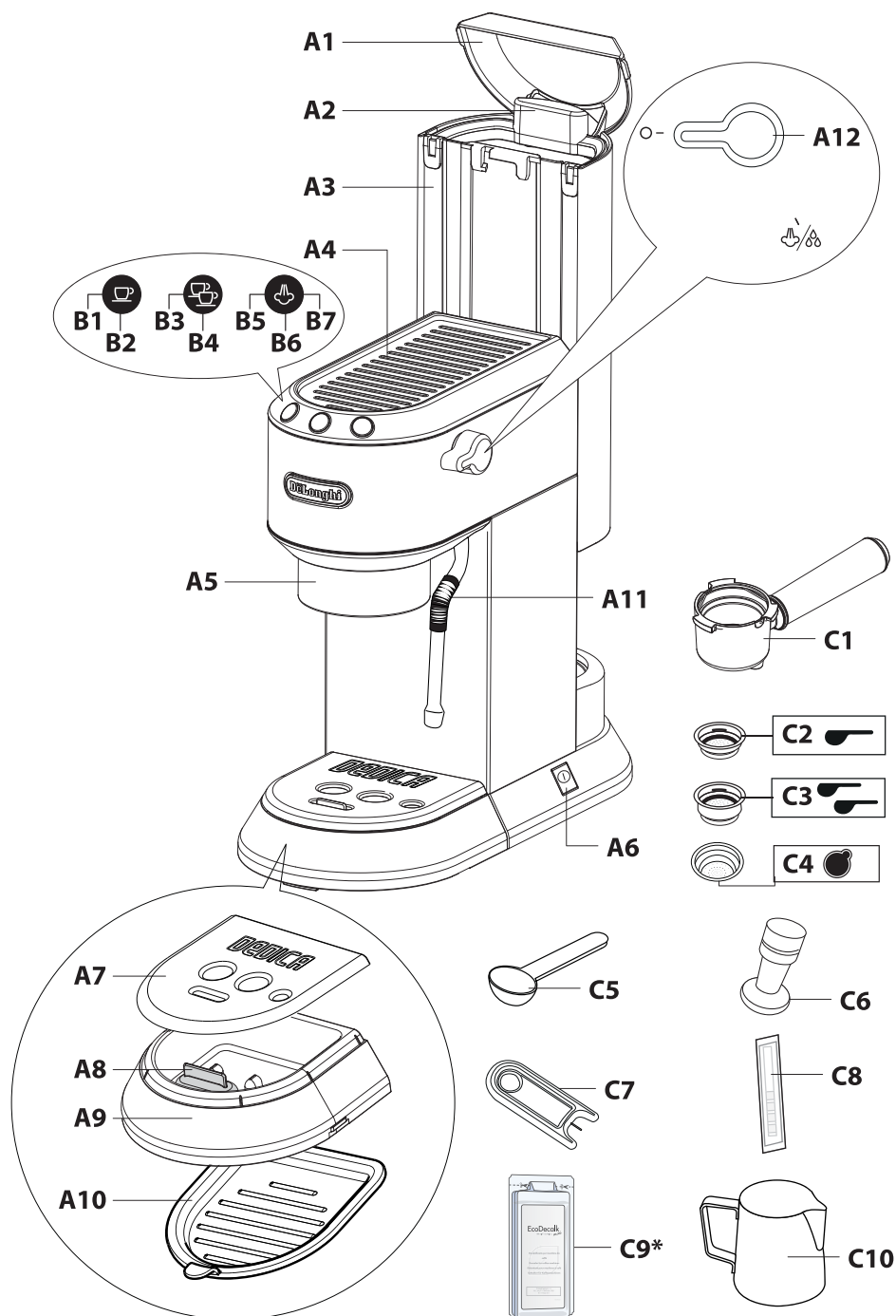


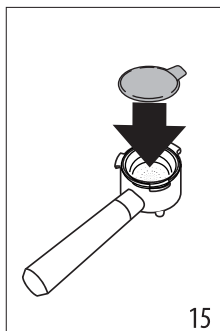
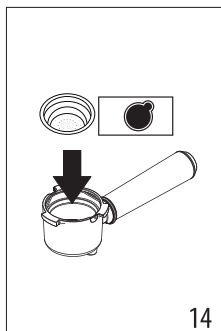
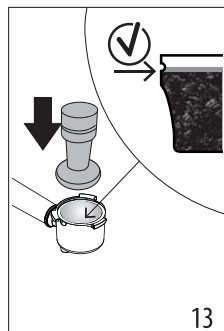
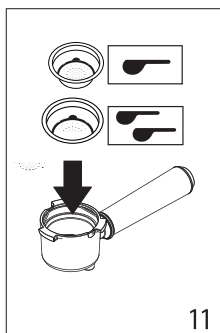
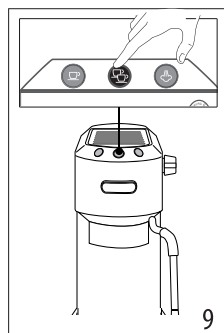
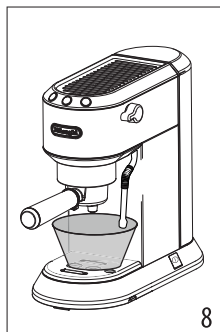
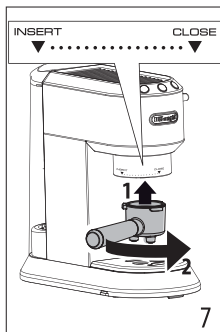
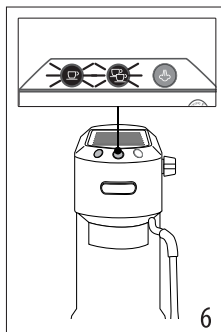
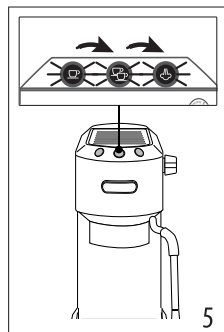
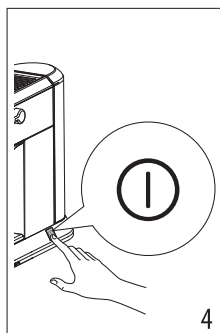
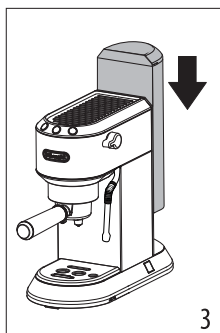
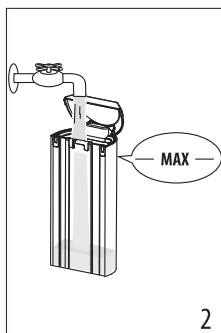
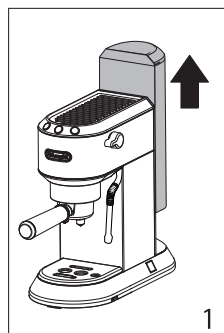
咖 啡 机
COFFEE MAKER

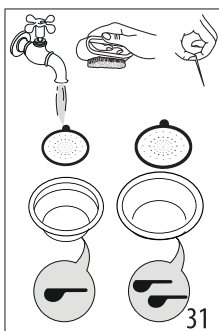
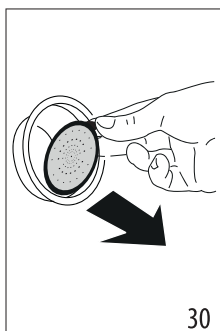
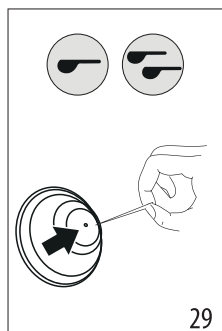
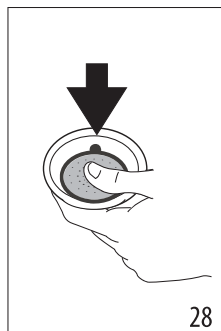
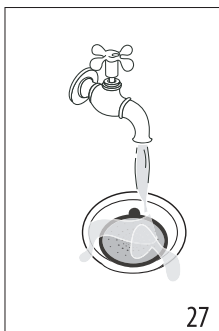
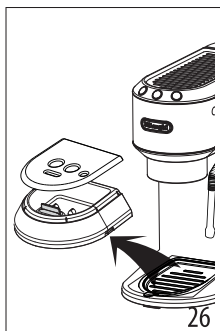
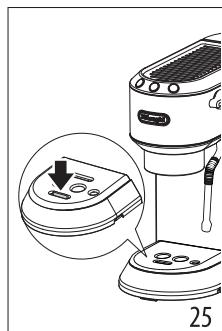
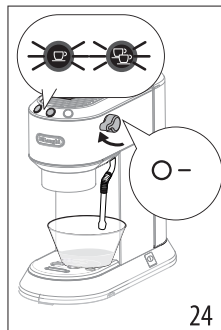
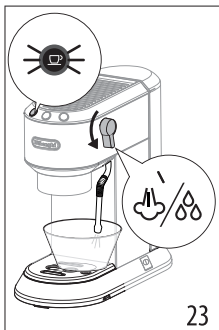
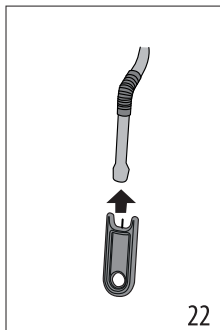
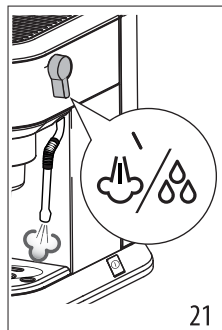
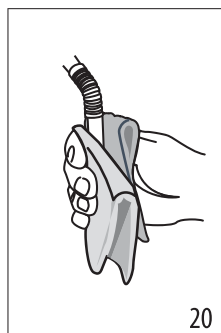
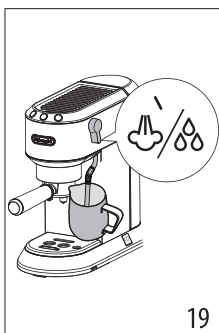
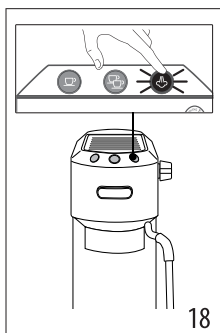
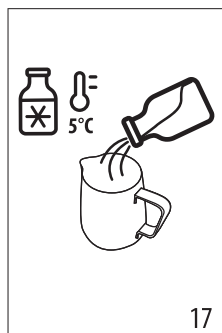
使
用
说
明
书

目 录

1. 基本安全警告	4	9. 定制咖啡饮品杯量	8
2. 基本信息	4	10. 如何制作卡布奇诺	8
2.1 使用说明	4	10.1 制作小贴士	8
3. 使用之前	5	10.2 清洁蒸汽杆	9
3.1 机器检查	5	10.3 冷却机器	9
3.2 机器安装	5	11. 制作热水	9
3.3 机器连接	5	12. 菜单设置	9
3.4 机器设置	5	12.1 设置咖啡的温度	9
3.5 与食品接触部分的清洗与维护	5	12.2 设置水的硬度	10
3.6 制作卡布奇诺咖啡和含牛奶咖啡	5	12.3 自动关机	10
4. 产品描述	5	13. 出厂默认值（重置）	10
4.1 机器部件描述-A	5	14. 清洁机器	10
4.2 控制面板描述-B	6	14.1 清洁滴水盘	11
4.3 机器配件描述-C	6	14.2 清洁咖啡过滤器	11
4.4 可选清洁配件	6	14.3 清洁咖啡流出口	11
5. 使用前的准备工作	6	14.4 其他清洗操作	11
6. 首次使用	6	14.5 清洁水箱	11
7. 制作咖啡	7	15. 除垢	11
7.1 压粉	7	16. 功能指示灯说明	13
7.2 制作更热咖啡的小贴士	7	17. 故障处理	14
8. 如何使用易理包制作意式浓缩咖啡	7		







1.基本安全警告

- 有心理、身体或者感官障碍、或不具备足够的经验或者知识的人员（包括儿童）不允许使用该电器，除非有对他们的安全负责的人密切监督并进行指导。
- 必须监督儿童，确保他们不玩玩该电器。
- 指定用途：本电器设计和制造的用途是制作咖啡，含牛奶饮品和热水。在水箱中仅能使用饮用水。切勿用配件制作说明书上未标明的饮品。任何其他的用途都必需考虑是否适合以避免危险。制造商对于未正确使用该电器引起的损害概不负责。
- 机器使用后，加热元件仍有热度，且根据使用时长，机器外壳的热量也可能持续数分钟。
- 彻底清洁所有部件，特别注意与牛奶接触的部件。
- 请勿让儿童在无人监管的情况下清洗、维护本产品。
- 在清洗的过程中，切勿将机器浸入水中。
- 重要：为防止损坏机器，请勿使用碱性清洁剂清洁；请使用软布，以及在适用情况下使用中性清洁剂清洁机器。
- 本电器仅限家庭使用，不适用于如下场所：商店员工厨房，办公室或其他工作环境；牧场旅馆；旅馆、汽车旅馆或其他住宅性环境；家庭式旅馆。
- 如果机器插头或电源线损坏，必须且只能由德龙指定的售后服务人员进行更换，以避免发生各种危险。
- 带有可拆卸电源线的机器：避免机器背面的电源线连接器或插座被溅水。
- 重要：表面为玻璃材质的机器：如果表面破裂，请勿使用。
- 使用过程中，切勿将咖啡机放在橱柜或厨房用具内。

这是一台电器设备，因此可能导致触电。

因此您应该重视以下安全警告：

- 切勿用湿手或湿脚接触该电器。
- 切勿用湿手接触插头。
- 确保能随时接近电器使用的插座，必要时能拔下电器插头。
- 直接拔下电源插头，切勿拉扯电源线，以免损坏电源线。
- 要完全断开电器电源，将电源线从插座上拔下。
- 如果发现机器有故障，不要试图自己检修。关闭电源，拔下电源插头，并与德龙指定的售后服务人员联系。
- 在对机器进行外部清洁之前，请先关闭机器，拔下电源插头，并待机器冷却。
- 如果发现机器有故障，不要试图自己检修。关闭电源，拔下电源插头，并与德龙指定的售后服务人员联系。
- 在对机器进行外部清洁之前，请先关闭机器，拔下电源插头，并待机器冷却。

重要提示!

请将所有包装材料（塑料袋、泡沫塑料）置于儿童接触不到的位置。

窒息危险。本产品可能含有较小的零部件。清洗和维护期间可能需要拆卸其中的一些小零件。请小心拆卸，把小零件置于儿童够不到的地方。

烫伤危险!

本电器运作时可能会产生热水和蒸汽，在操作过程中（自动冲洗、热饮输送、蒸汽输送、清洁等），请勿接触溅出的热水或蒸汽。当机器运行时，杯架可能会变得非常热。

2.基本信息

2.1使用说明

使用本机器前，请仔细阅读此说明书。不遵守本使用说明可能导致机器烫伤或损坏。制造商对由此造成的损坏不负任何责任。

请注意：

此安全警告适用于所有德龙品牌的咖啡机。

请将手册与机器随附的说明书放在一起，方便查阅。

如果转让该机器给其他人，请确保将说明书同时附送。

3.使用之前

3.1机器检查

打开包装后，确保机器表面完好无损，同时所有配件齐全。如果机器存在明显的损坏痕迹，请勿使用该机器。请与德龙售后服务中心联系。

3.2机器安装

安装机器的时候，应该重视以下安全警告：

- 机器会释放出热气，因此将机器放置于工作台时，机器表面、侧面及靠墙部分需留出至少3厘米的空间，咖啡机上方需要留出至少15厘米的空间。
- 若有水渗入，会损坏机器。切勿将该机器放置在水龙头或者水槽附近。
- 若机器中的水结冰会损坏机器，切勿将机器安放在一个室温可能低于零度的房间内。
- 电源线切勿放置在尖锐物体的边缘或接触热的物体的表面（如电热板），这会损坏电源线。

3.3机器连接

请检查并确认所使用的电源电压与该机器底部铭牌所标示的电源电压是否一致。本机器必须与具备有效的接地线的电源正确连接，且最小的额定电流只能为10安培。如果电源插座与机器插头不匹配，需由有专业资质的技术人员来替换相匹配的插座。

3.4机器设置

首次使用机器时，水回路中应无液体。机器在使用中会发出噪音。噪音会随着回路中液体的增加逐渐减小。

3.5与食品接触部分的清洗与维护

- 首次使用本机器或不使用超过3或4天时，请用热水冲洗可能与水或牛奶接触的所有可拆卸配件。
- 如本机器超过3或4天未使用，请在制作第一种饮料之前，按照本说明书中的说明冲洗水回路。
- 当机器通过显示屏或说明书中描述的指示灯向您提出建议时，请严格按照建议执行自动清洁和指导维护。

3.6制作卡布奇诺咖啡和含牛奶咖啡

- 本机器已通过测试，可用于含牛奶或以下植物来源的产品：大豆、大米和杏仁。不得使用其他类型的奶制品或植物来源的产品。
- 在使用任何类型的奶制品后，请对系统进行清洁。请遵循说明书中描述的标准程序进行操作。
- 由制造商提供的，或在说明书中描述的清洁方法无法保证完全去除过敏源。
- 如果发现已确认或疑似的过敏或不耐受症状，请确保您的机器在以前没有使用过含有能使您产生过敏反应的过敏源或能使您产生不耐受反应的任何以牛奶或植物来源为基础的产品。


4. 产品描述

4.1 机器部件描述-A


- A1. 水箱盖
- A2. 水箱把手
- A3. 水箱
- A4. 暖杯盘
- A5. 咖啡流出口
- A6. 开启/关闭开关
- A7. 咖啡杯盘
- A8. 滴水盘水位指示浮标
- A9. 滴水盘
- A10. 咖啡杯托盘
- A11. 蒸汽杆
- A12. 蒸汽旋钮

4.2 控制面板描述-B


B1. 制作1杯咖啡按钮

B2. 按钮上的开启指示灯（白色）

B3. 制作2杯咖啡按钮

B4. 按钮上的开启指示灯（白色）

B5. 蒸汽按钮

B6. 按钮上的开启指示灯（白色）

B7. 按钮上的除垢指示灯（橙色）

4.3 机器配件描述-C

C1. 过滤器手柄

C2. 1杯咖啡过滤器（过滤器的底部标有图标）

C3. 2杯咖啡过滤器（过滤器的底部标有图标）

C4. 易理包过滤器（过滤器的底部标有图标）

C5. 咖啡粉量勺

C6. 压粉器


C7. 蒸汽杆清洗针

C8. 水硬度测试纸

C9. 除垢剂

C10. 奶缸

4.4 可选清洁配件

 德龙软水过滤器

（参见“14.5 清洁水箱”章节）



请注意：

我们不断改进产品，因此德龙公司保留一切更改产品技术参数和外观特点的权利，且恕不需另行通知。

5. 使用前的准备工作

用温水和洗涤剂清洗所有配件，然后按以下步骤操作：

1. 取出水箱（A3）（如图1），倒入清水，注意不要超过“-MAX-（最高水位）”线（如图2）。

2. 将水箱装回机器，并轻轻按一下，可将水箱底部的阀门顶开（如图3）。

重要！

切勿在水箱无水或未安装水箱的情况下，使用机器。



请注意：

水箱的底部卡槽内有一点点水属于正常现象。可以定期用一块干的海绵擦干。

6. 首次使用


1. 将电源线的插头插入电源插座。按开启/关闭开关开启机器（A6）（如图4）。


2. 机器会自动进行一次诊断循环，开启后三个指示灯依次闪烁（如图5）。

3. 然后和指示灯闪烁，表示机器正在预热（如图6）。当这两个指示灯停止闪烁并持续亮起，表示机器可以执行冲洗循环。



4. 将过滤器手柄安装到机器：将过滤器手柄与“插入（INSERT）”字样对齐，然后向右旋转，直到手柄与“关闭（CLOSE）”字样对齐（如图7）。

5. 在咖啡流出口（A5）和蒸汽杆（A11）下方放置一个容积至少为0.5升的容器（如图8）。

6. 按下按钮：重复5次操作（如图9）。

7. 将蒸汽旋钮（A12）旋转到位置（如图10）并释放热水，直到将水箱清空，然后将蒸汽旋钮转到○位置，关闭热水。这一过程的目的是在使用蒸汽制作饮品之前，清空回路中的水。机器已准备就绪。

7. 制作咖啡

1. 将咖啡过滤器（C2）或（C3）放入过滤器手柄（C1）（如图11）。
2. 如需制作1杯意式浓缩咖啡，请在咖啡过滤器中装入一量勺的咖啡粉（大约7克）。如需制作2杯意式浓缩咖啡，请在咖啡过滤器中装入两量勺的咖啡粉（大约12克）（如图12）。制作意式浓缩咖啡须使用精磨咖啡粉。
3. 均匀倒入咖啡粉，用压粉器（C6）轻轻向下压（如图13）。完成压粉后，确保咖啡粉量处于适宜的粉量水平。您可能需要再次添加咖啡粉。
4. 将过滤器手柄四周多余的咖啡粉清理干净，然后将其安装到机器（如图7）。
5. 将一个或多个咖啡杯放置在过滤器手柄流出口下方。
6. 确保咖啡按钮对应的指示灯常亮，然后按下咖啡按钮 （B1）或 （B3）。
7. 机器开始制作咖啡，完毕后自动停止。
8. 若要拆卸过滤器手柄，请从右向左转动手柄。

请注意：

- 为保证操作的准确性，在倒入咖啡粉之前，确保过滤器中没有上次制作咖啡后残留的咖啡粉。
- 当机器在制作咖啡时，按住之前按下的咖啡按钮即可随时中断制作过程。
- 制作结束后（3秒内），如果想要增加杯中的咖啡量，则需按住之前按下的咖啡按钮。制作过程会在几秒钟后自动停止。
- 为避免飞溅，机器制作咖啡时，切勿取下过滤器手柄。制作完成后，请等待片刻。

7.1 压粉：


正确按压咖啡粉是制作意式浓缩咖啡的关键。

- 如果按压过紧，咖啡流出速度太慢，咖啡油脂颜色过深。
- 如果按压过轻，咖啡流出速度太快，咖啡油脂太少。

7.2 制作更热咖啡的小贴士

- 在制作咖啡之前，可以使用热水预热咖啡杯。
- 将过滤器（C2）或（C3）装入过滤器手柄（C1），然后将过滤器手柄安装到机器上，但咖啡过滤器内不添加咖啡粉。将稍后用来盛放咖啡的咖啡杯放置在过滤器手柄下方，按下制作1杯咖啡按钮，释放热水预热咖啡杯。
- 在“设置菜单”中调高萃取温度（参考“12. 菜单设置”）。
- 将要使用的咖啡杯放置在暖杯盘（A4）上，进行暖杯。

8. 如何使用易理包制作意式浓缩咖啡

1. 将易理包咖啡过滤器（C4）放入过滤器手柄（C1）（如图14）。
2. 安装易理包，尽量装在过滤器的中心位置（如图15）。安装易理包时请按照易理包包装上的标识进行安装。
3. 将过滤器手柄安装到机器（如图7）。
4. 将咖啡杯放置在过滤器手柄流出口下方。
5. 确保咖啡按钮对应的指示灯亮起，然后按下咖啡按钮 （B1）。
6. 机器开始制作咖啡，完毕后自动停止。
7. 若要拆卸过滤器手柄，请从右向左转动手柄。

易理包的选择

请使用包装上注明符合ESE标准的易理包。



ESE（易理包）标准已被世界上许多知名易理包生产商普遍认可，可使意式浓缩咖啡的制作过程更加便捷卫生。



请注意：

- 如果您使用易理包制作咖啡，一次只能制作一杯。
- 当机器在制作咖啡时，按住之前按下的咖啡按钮即可随时中断制作过程。


- 制作结束后（3秒内），如果想要增加杯中的咖啡量，则需按住之前按下的咖啡按钮。制作过程会在几秒钟后自动停止。
- 为避免飞溅，机器制作咖啡时，切勿取下过滤器手柄。制作完成后，请等待片刻。
- 详见“7.2. 制作更热咖啡的小贴士”章节的描述。


9. 定制咖啡饮品杯量

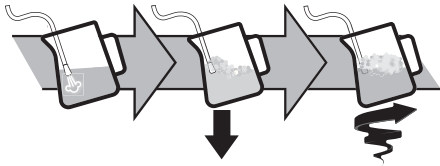
- 机器出厂时设置的默认咖啡杯量为标准咖啡杯量。如需改变咖啡杯量，请按以下步骤操作：
1. 将一个或两个咖啡杯放置在过滤器手柄流出口（C1）下方。
 2. 持续按住  或  按钮。
 3. 机器开始出咖啡，另外一个咖啡按钮的指示灯闪烁，表示该程序正在制作中。
 4. 一旦咖啡杯中的咖啡达到所需的量，释放按钮。机器停止出咖啡，同时相应的指示灯亮起，表示咖啡杯量的设置已完成。

	默认杯量	可设定杯量
	35毫升	约15至90毫升
	70毫升	约30至180毫升

10. 如何制作卡布奇诺



1. 如果使用的是高身玻璃杯，请取下滴水盘（A9）并将高身玻璃杯放在咖啡杯托盘（A10）上（如图16）。
2. 按之前章节的描述制作一杯意式浓缩咖啡，并使用足够大的杯子。
3. 将冰箱冷藏的牛奶倒入奶缸（如图17）。请注意牛奶打发后的体积会增加到原来的2-3倍。
4. 按下  按钮（如图18）。对应指示灯闪烁。指示灯常亮，表示机器已达到制作蒸汽的温度。

5. 把奶缸放置在蒸汽杆（A11）下方。浸入蒸汽杆，并将蒸汽旋钮转到  位置（如图19）。



6. 将蒸汽杆浸入牛奶液面下方适当位置，蒸汽冲击力会把空气混合进牛奶，形成细密的奶泡。
7. 蒸汽喷嘴应始终浸入牛奶液面，但不要让太多空气进入，避免产生大气泡。
8. 将蒸汽喷嘴插入牛奶液面下方：蒸汽在牛奶中产生涡流。
9. 当牛奶达到所需温度后，关闭蒸汽旋钮。待蒸汽完全停止后，取下奶缸。
10. 将打发好的牛奶倒入盛有意式浓缩咖啡的杯子中。卡布奇诺制作完成。如果需要增加甜味，可在奶泡上撒上可可粉。

请注意：

- 如需制作一杯以上的卡布奇诺，请先制作好所有的咖啡，然后再制作牛奶泡沫。
- 按任意的按钮，退出蒸汽功能。  和  指示灯闪烁，表示必须执行一次冷却机器，详见“10.3 冷却机器”章节的描述。每次释放蒸汽的时间不能超过60秒。



10.1 制作小贴士：




- 一杯卡布奇诺的推荐奶量：100ml。
- 为了打出绵密顺滑的牛奶泡沫，请使用冷藏牛奶（大约5℃）。
- 机器准备打发牛奶时，在开始前，在蒸汽杆下方放置一个空的容器，打开蒸汽旋钮，释放残留在蒸汽回路中的空气。关闭蒸汽旋钮，进行准备工作。

10.2 清洁蒸汽杆


1. 使用后，务必要用干净的湿布擦拭蒸汽杆，清除牛奶的残余沉积物（如图20）。如果要进行深度清洁，我们推荐使用Eco MultiClean（专用清洁剂）。去除蒸汽杆上的残留牛奶蛋白质和脂肪，可最大限度保证饮品卫生，同样的操作也适用于整个机器的清洁。
2. 释放蒸汽，持续几秒，以清洁蒸汽杆（如图21）。
3. 等待蒸汽杆冷却。为确保蒸汽杆长时间的高效工作，可使用专用清洁工具（C7）确保出气孔未被堵塞（如图22）。

10.3 冷却机器

使用蒸汽功能后，机器上的  和  指示灯同时闪烁，表明必须将机器冷却到制作意式浓缩咖啡的合适温度。请按如下步骤操作：


- 在蒸汽杆下方放置一个容器。
- 打开蒸汽旋钮，释放蒸汽和热水。对应指示灯闪烁 （如图23）；
- 当  和  指示同时灯闪烁时，表示机器已冷却，停止释放蒸汽和热水；关闭蒸汽旋钮（如图24）。机器已准备就绪。

11. 制作热水

1. 将容器放置在蒸汽杆（A11）下方。
2. 等待咖啡指示灯（B1）和（B3）常亮。
3. 将旋钮（A12）转到  位置。热水从蒸汽杆释放。
4. 如需停止释放热水，请将蒸汽旋钮转至○位置。

热水制作时间不能超过60秒。

12.菜单设置

进入菜单设置程序前，请先确认机器已处于准备就绪的状态。然后持续按住  按钮至少10秒钟，直到三个指示灯依次地闪烁：











此时机器进入菜单设置程序模式，您可以根据自己的要求来设置菜单程序，然后等待15秒后自动退出菜单设置程序。

请注意：

如果15秒内没有选择，机器会自动地退出菜单设置程序，并且机器可以正常地使用了。

12.1 设置咖啡的温度

请按如下的步骤来设置咖啡的温度：

- 1、进入菜单设置程序
- 2、按  按钮进入设置咖啡的温度的设置程序之前所选择的相应程序的咖啡指示灯短暂亮起：
 -    较低温度
 -    中等温度
 -    较高温度
- 3、然后指示灯开始按顺序地亮起
- 4、按所需的咖啡的温度按钮



low/低



medium/中



high/高

- 5、选择好咖啡的温度之后  指示灯闪烁，表示所选择的咖啡的温度已被保存。

机器自动退出菜单，机器可以正常地使用了。


请注意：

这里的温度是指机器加热系统内部的水温，而不是指出至杯中咖啡的温度，也不是从过滤器手柄流出口流出咖啡的温度。

12.2 设置水的硬度




根据设置的水的硬度，机器在使用一段时间后除垢指示灯（B7）会亮起，机器需要进行除垢了。


机器可以根据不同地区的自来水的硬度来设定除垢的时间。具体的操作步骤如下：

- 1、进入菜单设置程序。
- 2、按  按钮进入设置水的硬度的菜单设置程序。之前所选择的相应程序的咖啡指示灯短暂亮起。

-    软水
-    中等硬度的水
-    硬水

- 3、然后指示灯开始依次地闪烁。
- 4、根据你所在地区的水的硬度，按相应的按钮。

 软水	 中等硬度的水	 硬水
< 10° dH 10°	dH-20° dH	>20° dH
< 18° fH 18°	fH-36° fH	>36° fH
< 180mg/l CaCO ₃	180-300mg/l CaCO ₃	360mg/l CaCO ₃


—指示灯  闪烁，表示所选择的水的硬度已被保存。

机器自动退出菜单，此时机器可以正常地使用了。

12.3 自动关机

为了节能，当机器很长一段时间不使用时，机器的自动关机功能可以自动地关闭机器。

如需重新启动机器，可以按控制面板上的任意的按钮。


- 1、进入菜单设置程序
- 2、按  按钮进入设置自动关机菜单设置程序，之前所选择的相应程序的咖啡指示灯短暂亮起：

-    9分钟
-    30分钟
-    3小时

- 3、指示灯开始依次地闪烁。

- 4、根据所需的时间，按相应的按钮。






-   
- 9分钟 30分钟 3小时

- 5、指示灯  闪烁，表示所选的自动关机时间已被保存。

机器自动退出菜单，此时机器可以正常地使用了。

13. 出厂默认值（重置）

此操作会将机器重置为默认值。请按如下步骤操作：

1. 将蒸汽杆（A11）放置在滴水盘（A9）上方；
 2. 访问设置菜单；
 3. 将蒸汽旋钮（A12）转到   位置；
 4. 按下  按钮。三个指示灯同时闪烁，即表示已经恢复原始设置；
 5.  和  指示灯闪烁，表示必须再次关闭蒸汽旋钮（O位置）。
- 蒸汽旋钮关闭后，机器就可以正常使用了。

14. 清洁机器

以下咖啡机部件必须定时清洁：

- 滴水盘（A9）
- 咖啡过滤器（C2）、（C3）和（C4）；
- 咖啡流出口（A5）；
- 水箱（A3）；
- 蒸汽杆（A11）如“10.2 清洁蒸汽杆”一节所述；

重要提示！

- 不得用洗碗机清洗任何组件或配件。
- 切勿使用化学溶剂、研磨性清洁剂或酒精清洗咖啡机。
- 切勿使用金属物体除垢或去除咖啡沉淀物，以避免擦伤金属表面或塑料表面。
- 如果机器超过一周没有使用，我们建议您在再次使用之前根据“3.4 机器设置”章节的描述执行一次冲洗循环。

危险!

- 咖啡机属于电器，清洁时，切勿将机器浸入水中。
- 在开始对机器外部进行任何清洁操作之前，请先关闭机器，拔掉电源插头，等待其冷却。

14.1 清洁滴水盘

重要提示!

滴水盘装有一个水位指示浮标（红色），显示滴水盘中的水量。该水位指示浮标从咖啡杯托盘（如图25）中浮出来前，必须清空滴水盘并清洗，否则水会从滴水盘的边缘溢出来，损坏机器和弄脏放置机器的桌面及其四周。

1. 取下滴水盘（A9）（如图26）；
2. 拆下咖啡杯架（A7），倒空水并用布清洁滴水盘，然后重新组装。取出咖啡杯托盘（A10），用水洗净，擦干后放回机器；
3. 将滴水盘装回机器。

14.2 清洁咖啡过滤器

咖啡过滤器设计是为了获得最好的咖啡油脂。为了保证咖啡过滤器的有效性，必须始终保持清洁状态，不含任何咖啡残渣。

- 每次使用后，用大量流水冲洗过滤器（如图27），然后按压网孔过滤器，确保其正确安装（如图28）；
- 检查过滤器背面的小孔（如图29），确保其正确安装并没有堵塞。

如果过滤器仍然很脏，或者在任何情况下按照以下方法至少每月清洁一次咖啡过滤器：

1. 拉动垫圈，取出网孔过滤器（如图30）。
2. 用流水冲洗过滤器（如图31）。
3. 确保咖啡过滤器上面的小孔没有被堵塞。如有必要，可用清洁针进行清洁（如图29-31）。
4. 用布擦干。
5. 用力下压，将网孔过滤器放回原位（如图28）。易理包过滤器

在流水下冲洗。确保咖啡过滤器上面的小孔没有被堵塞。如有必要，可用清洁针进行清洁（如图29-31）。

14.3 清洁咖啡流出口

大约每制作200杯咖啡以后，咖啡流出口就需要释放0.5升的水来冲洗咖啡流出口（按一下制作咖啡按钮，但不加入咖啡粉）。

14.4 其他清洗操作

1. 切勿使用化学溶剂或具有研磨性的物体来清洁咖啡机。用一块柔软的湿布进行清洗即可。
2. 定期清洁过滤器手柄。

14.5 清洁水箱

1. 定期清洁水箱（大约一月一次）。在更换软水过滤器（如有）的时候，请用湿布和少量的中性清洁剂清洁水箱；
2. 取出软水过滤器（如有），并用流水冲洗；
3. 将软水过滤器（如有）放回机器，将水箱装满水，然后放回机器；
4. 释放100毫升的水（软水过滤器需自行配备）。


15.除垢

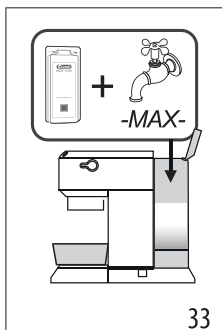
重要提示!




在使用除垢剂容器（C9）之前，请阅读包装上的说明和标签。

- 仅可使用德龙除垢剂。因使用不当除垢剂和/或未按正确的除垢步骤进行除垢而引起机器损坏，不在制造商保修范围内。
- 除垢剂可能会损伤其脆弱表面。如果除垢剂意外溅出，请立即擦干。

除垢	
除垢剂	德龙除垢剂
容器	容量 1升
时间	约25分钟


1. 当橙色的  指示灯闪烁时，机器需要进行除垢。
2. 确保没有安装过滤器手柄，并将容器放置在热水喷嘴和咖啡流出口下方（如图32）。
3. 用清水稀释除垢剂，并将除垢剂倒入水箱（将水箱装满至-MAX-（最高水位）线）（如图33）。



4. 当机器完成预热后，1杯和2杯咖啡指示灯持续亮起，按住  按钮10秒，直到三个按钮依次闪烁。
5. 将蒸汽旋钮转到  。
6. 按下  按钮开始除垢。
7. 除垢程序开始，除垢剂从蒸汽杆流出。通过除垢剂一系列的自动冲洗、暂停冲洗来清除咖啡机内的残留物，直到清空水箱为止。

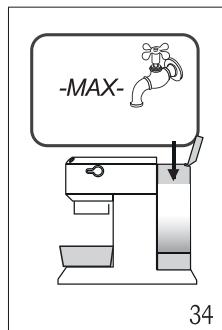
请注意：





在除垢的过程中，如需清洁咖啡回路，可以通过不时关闭蒸汽旋钮，从咖啡流出口释放一点点的除垢剂来进行清洁。

机器停止运作，橙色指示灯  继续闪烁，表示除垢正在进行。

您现在需要冲洗机器。

8. 清空盛接除垢剂的容器，然后将空的容器放置在热水流出口的下方。



9. 现可用清水冲洗本机器。取出水箱，用流水冲洗后注入清水至-MAX-（最高水位）线（如图34），再安装回机器。
10. 确认蒸汽旋钮处于  位置，然后再按一下  按钮，开始冲洗机器。在除垢的过程中，如需清洁咖啡回路，可以通过不时关闭蒸汽旋钮，从咖啡流出口释放一些水来进行清洁。
11. 如机器配备了软水过滤器，需先取下软水过滤器，执行第一个冲洗循环后，装回软水过滤器，并按照第7点到第9点的说明执行第二个冲洗循环。
12. 水箱清空之后，橙色的指示灯熄灭，除垢完成。  和  指示灯闪烁。
13. 将蒸汽旋钮转到“O”位置。
14. 在水箱中注入清水。
15. 机器已准备就绪。

16.功能指示灯说明

指示灯	操作	含义
	开启/关闭按钮开启	机器进行一个自我的诊断循环，指示灯按顺序地闪烁
	开启机器	指示灯闪烁：机器正在预热，准备制作咖啡 指示灯持续亮起：机器可以开始制作咖啡了
	水箱已空，或机器无法制作咖啡	指示灯快速闪烁。请参见章节“6. 首次使用”章节的描述操作
	开启蒸汽功能	指示灯闪烁：机器正在预热，准备释放蒸汽 指示灯持续亮起：机器可以开始释放蒸汽
	打开蒸汽旋钮	指示灯闪烁：关闭蒸汽旋钮
	机器的温度过高	按照“10. 3冷却机器”章节的描述操作
 橙色指示灯 闪烁	机器需要进行除垢	对机器执行除垢操作，  指示灯熄灭后，即表示除垢已完成

17. 故障处理

问题	原因	解决方案
不出咖啡	水箱里没有水	往水箱中加水
	过滤器网孔堵塞	清洁过滤器网孔
	过滤器堵塞，或缺少网孔过滤器	按照“14.2 清洁咖啡过滤器”章节的描述清洁咖啡过滤器
	水箱安装不正确，底部的阀门没有打开	轻轻按下水箱，打开底部阀门
	机器需要进行除垢	按照“15. 除垢”章节所述进行除垢
咖啡从过滤器手柄的边缘流出，而不是从咖啡流出口流出	过滤器手柄插入不正确或过滤器太脏	正确安装过滤器手柄，并尽可能将其旋紧
	垫圈失去弹性或太脏了	联系售后服务中心更换垫圈
	过滤器手柄流出口堵塞	清洁过滤器手柄上的咖啡流出口
	过滤器堵塞，或缺少网孔过滤器	按照“14.2 清洁咖啡过滤器”章节的描述清洁咖啡过滤器
过滤器手柄不能安装到机器上	咖啡过滤器中加入了太多的咖啡粉	使用配备的量勺来加咖啡粉，并确保使用了正确的咖啡过滤器
咖啡油脂太少（咖啡流出速度太快）	咖啡粉按压不充分	将咖啡粉按压紧实些
	加入的咖啡粉太少	增加咖啡粉的用量
	咖啡粉研磨得太粗糙	使用意式浓缩咖啡专用的咖啡粉
	使用了错误类型的咖啡粉	更换咖啡粉的类型
咖啡油脂颜色深（咖啡流出速度太慢）	咖啡粉挤压过紧	减轻压粉的力度
	咖啡粉用量过多	减少咖啡粉的用量
	咖啡流出口堵塞	按照“14.3 清洁咖啡流出口”章节的描述清洁咖啡流出口
	咖啡过滤器堵塞	按照“14.2 清洁咖啡过滤器”章节的描述清洁咖啡过滤器
	咖啡粉研磨过细	使用意式浓缩咖啡专用的咖啡粉
	咖啡粉过细或受潮	使用意式浓缩咖啡专用咖啡粉，并确保咖啡粉没有受潮
	机器需要进行除垢	按照“15. 除垢”章节所述进行除垢
制作完咖啡后，过滤器仍安装在咖啡流出口上		保持过滤器手柄安装状态，然后制作咖啡，最后再取下过滤器手柄
→		

问题	原因	解决方案
机器不能制作任何饮品，指示灯闪烁几秒钟	水箱里没有水	往水箱中加水
	水箱安装不正确，底部的阀门没有打开	轻轻按下水箱，打开底部阀门
	咖啡流出口堵塞	按照“14.3 清洁咖啡流出口”章节的描述清洁咖啡流出口
	咖啡过滤器堵塞	按照“14.2 清洁咖啡过滤器”章节的描述清洁咖啡过滤器
	机器需要进行除垢	按照“15. 除垢”章节所述进行除垢
机器不能正常运作，所有的指示灯闪烁		立即关闭机器，然后与德龙授权的服务中心联系
制作卡布奇诺时，牛奶不起泡	牛奶不够冰	务必使用冰箱冷藏的牛奶
	蒸汽杆堵塞	按照“10.2 清洁蒸汽杆”章节所述清洁蒸汽杆
	机器需要进行除垢	按照“15. 除垢”章节所述进行除垢

名称和产品中有害物质的含量

Name and content of hazardous substances in products

组件 名称 Components Name	有害物质 Hazardous substances					
	铅 Lead (Pb)	汞 Mercury (Hg)	镉 Cadmium (Cd)	六价铬 Hexavalent Chromium (Cr (VI))	多溴联苯 Polybrominated biphenyls (PBB)	多溴二苯醚 Polybrominated diphenyl ethers (PBDE)
塑料外壳 和底盘 Plastic enclosure and chassis	○	○	○	○	○	○
印刷电路板 组装 Printed Circuit Board Assembly	X	○	○	○	○	○
电机、阀门 Motors, valves	X	○	○	○	○	○
电缆和电线 Cable and wiring	○	○	○	○	○	○
金属零件 Metal parts	X	○	X	○	○	○

本表格依据SJ/T 1364 的规定编制。This table is prepared in accordance with the provisions of SJ/T 11364.

○：表示该有害物质在该部件所有均质材料中的含量均在GB/T 26572规定的限量要求以下。

○：The content of such hazardous substance in all homogeneous material of such components is below the limit required by B/T 26572.

X：表示该有害物质至少在该部件的某一均质材料中的含量超出GB/T 26572规定的限量要求。主要是由于受技术发展水平限制，暂时无法实现替代或减量化，但这部分零部件本身不直接与食物接触，正常使用条件下不会对使用者造成任何健康影响。我们的产品均通过食品安全监测，可安心使用。

X: The content of such hazardous substance in a certain homogeneous material of such components is beyond the limit required by GB/T 26572, mainly due to the level of technical development situation, temporarily unable to achieve replacement or reduction.

The above cited parts marked with "X" are related to components non in contact with the food.

All parts of the appliance in direct contact with the food are safe under normal conditions of use.

1. FUNDAMENTAL SAFETY WARNINGS

- The appliance is not intended for use by persons (including children) with reduced physical, sensory or mental capabilities, or lack of experience and knowledge, unless they have been given supervision or instruction concerning use of the appliance by a person responsible for their safety.
- Children should be supervised to ensure that they do not play with the appliance.
- Designated use: this appliance is designed and made to prepare beverages based on coffee, milk and hot water. Use drinking water only in the tank. Never use the accessories to make beverages other than those described in these instructions. Any other use is considered improper and thus dangerous. The manufacturer is not liable for damage deriving from improper use of the appliance.
- The surface of the heating element remains hot after use and the outside of the appliance may retain the heat for several minutes depending on use.
- Clean all the components thoroughly, taking particular care with parts in contact with the milk.
- Cleaning and user maintenance shall not be made by children without supervision.
- Never clean by immersing the appliance in water.
- IMPORTANT: to prevent damage to the appliance, do not clean with alkaline detergents; use a soft cloth and, where applicable, neutral detergent.
- This is an household appliance only. It is not intended to be used in: staff kitchen areas in shops, offices and other working environments; farm houses; by clients in hotels, motels and other residential type environments; bed and breakfast type environments.
- If the plug or power cord is damaged, it must be replaced by customer services only to avoid all risk.
- Appliances with removable cord: avoid splashes of water on the power cord connector or socket at the back of the appliance.
- IMPORTANT: Models with glass surfaces: do not use the appliance if the surface is cracked.
- The coffee maker must not be placed inside a cabinet or kitchen unit during use

FOR EUROPEAN MARKETS ONLY:

- This appliance can be used by children aged from 8 years and above if they have been given supervision or instruction concerning use of the appliance in a safe way and understand the hazards involved. Cleaning and user maintenance shall not be made by children unless they are above 8 years old and supervised. Keep the appliance and power cord away from children under 8 years of age.

- The appliance can be used by persons with reduced physical, sensory or mental capabilities or lack of experience and knowledge if they are supervised or have been given instruction concerning use of the appliance in a safe way and if they understand the hazards involved.
- Children shall not play with the appliance.
- Always unplug the appliance when left unattended and before assembly, taking apart or cleaning.



Surfaces marked with this symbol become hot during use (the symbol is present in certain models only).

This is an electrical appliance and may cause electric shock.

You should therefore follow these safety warnings:

- Never touch the appliance with damp hands or feet.
- Never touch the plug with damp hands.
- Make sure the socket used is freely accessible at all times, enabling the appliance to be unplugged when necessary.
- Unplug directly from the plug only. Never pull the cord as you could damage it.
- To disconnect the appliance completely you must unplug it from the mains socket.
- If the appliance is faulty, do not attempt to repair. Turn it off, unplug from the mains socket and contact Customer Services.
- Before cleaning the appliance, turn it off, unplug from the mains socket and allow to cool.

Important!

Keep all packaging (plastic bags, polystyrene foam) away from children.

CHOKING HAZARD. The appliance might contain small parts. Some of those small parts might be required to get disassembled during cleaning and maintenance operations. Handle with care and keep small parts out of reach of children.

Danger of burns!

This appliance produces hot water and steam may form while it is in operation.

During operation (automatic rinsing, hot beverage delivery, steam delivery, cleaning), avoid contact with splashes of hot water or steam.

When the appliance is in operation, the cup shelf could become very hot.

2. GENERAL INFORMATION

2.1 Instruction for Use

Read all the Instruction for Use carefully before using the appliance. Failure to follow this Instruction for Use may result in burns or damage to the appliance.

The manufacturer is not liable for damage deriving from failure to respect this Instruction for Use.

Please note:

These safety warnings are valid for all De'Longhi coffee machines.

Keep this leaflet together with the instructions accompanying the appliance.

If the appliance is passed to other persons, they must also be provided with this Instruction for Use.

3. BEFORE USE

3.1 Checking the appliance

After removing the packaging, make sure the product is complete and undamaged and that all accessories are present. Do not use the appliance if it is visibly damaged. Contact De'Longhi Customer Services.

3.2 Installing the appliance

When you install the appliance, you should respect the following safety warnings:

- The appliance gives off heat. After positioning the appliance on the worktop, leave a space of at least 3 cm between the surfaces of the appliance and the side and rear walls and at least 15 cm above the coffee maker.
- Water penetrating the appliance could cause damage. Do not place the appliance near taps or sinks.
- The appliance could be damaged if the water it contains freezes. Do not install the appliance in a room where the temperature could drop below freezing point.

- Arrange the power cord in such a way that it cannot be damaged by sharp edges or contact with hot surfaces (e.g. electric hot plates).

3.3 Connecting the appliance

Check that the mains power supply voltage corresponds to that indicated on the rating plate on the bottom of the appliance.

Connect the appliance to an efficiently earthed and correctly installed socket with a minimum current rating of 10A only.

If the power socket does not match the plug on the appliance, have the socket replaced with a suitable type by a qualified professional.

3.4 Setting up the appliance

The first time you use the machine, the water circuit is empty and the appliance could be very noisy. The noise becomes less as the circuit fill.

3.5 Cleaning and maintenance of materials in contact with food

- When used for the first time, or after 3 or 4 days without use, clean the appliance and the removable accessories that come into contact with water, coffee and milk, as indicated in the instructions for use. Check in the instructions which accessories are dishwasher safe.
- If the appliance is not used for more than 3 or 4 days, before making the first beverage, rinse the water circuit as described in this Instruction for Use.
- Be certain to take maximum care when carrying out all cleaning and maintenance operations described in the instructions for use and/or prompted by the display or warning lights of the appliance itself.

3.6 Making cappuccinos and milk-based coffees

- The appliance has been tested for use with cow's milk and the following products of plant origin: soya, rice and almond. No other type of milk or product of plant origin may be used.
- To clean the system, following use with any type of milk, please follow the standard procedures described in the instruction manual
- The cleaning methods provided by the manufacturer and described in the instructions do not guarantee the complete removal of allergens.
- In the case of confirmed or suspected allergies and intolerances, make sure that your machine has not been previously used with any milk or product of plant origin containing the allergens you are allergic to or the substances you are intolerant to.

4. REGULATORY REFERENCES



This product complies with European regulation no. 1935/2004 on materials and articles intended to come into contact with food.

5. DISPOSING OF THE APPLIANCE



The appliance must not be disposed of with household waste, but taken to an authorised waste separation and recycling centre.

6. DESCRIPTION

6.1 Description of appliance - A

- A1. Water tank lid
- A2. Water tank extraction handle
- A3. Water tank
- A4. Cup warmer
- A5. Coffee spouts
- A6. Main switch (ON/OFF)
- A7. Cup grille
- A8. Drip tray water level indicator
- A9. Drip tray
- A10. Cup/mug tray
- A11. Steam wand
- A12. Steam dial

6.2 Description of control panel - B

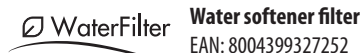
- B1. 1 cup button
- B2. "ON" light (white) in the button
- B3. 2 cup button
- B4. "ON" light (white) in the button
- B5. Steam button
- B6. "ON" light (white) in the button
- B7. "Descaler light" (orange)

6.3 Description of accessories - C

- C1. Filter holder
- C2. 1 cup filter (☞ symbol under filter)
- C3. 2 cup filter (☞ symbol under filter)
- C4. Pod filter (☞ symbol under filter)
- C5. Measure
- C6. Presser
- C7. Steam wand cleaning needle
- C8. Water hardness test
- C9. Descaler (*certain models only)
- C10. Milk jug

6.4 Optional cleaning accessories recommended by the manufacturer

For more information, visit www.delonghi.com.



7. PREPARING THE APPLIANCE





Wash all accessories with warm water and washing-up liquid, then proceed as follows:

1. Extract the water tank (A3) (fi . 1) and fill with fresh clean water, taking care not to exceed the MAX level (fi . 2).
2. Put the tank back in the appliance, pressing lightly to open the valves located on the bottom of the tank (fi . 3).

Important: *Never operate the appliance without water in the tank or without the tank.*

Please note: *You should customise water hardness as soon as possible following the instructions in section "14. SETTINGS MENU".*

8. SETTING UP THE APPLIANCE



1. Plug into the mains socket. Press the main switch (A6) (fi . 4).
2. The device performs a self-diagnosis, indicated by sequential flashing of the three buttons (fi . 5).
3. The  and  lights flash to indicate the appliance is heating up (fi . 6). When the lights stop flashing and remain on steadily, the appliance is ready to perform a rinse cycle.
4. Attach the filter holder to the appliance; align the filter holder handle with "INSERT", then rotate to the right until the handle is aligned with "CLOSE" (fi . 7).
5. Place a container with a minimum capacity of 0.5 litres under the coffee spouts (A5) and steam wand (A11) (fi . 8).
6. Press the  button. Repeat this operation 5 times (fi . 9).
7. Turn the steam dial (A12) to the  position (fi . 10) and deliver hot water until the water tank is empty, then close the dial by turning it to the 0 position. The purpose of this procedure is to purge any water from the circuit before using steam to prepare a beverage.

The appliance is ready for use.

Please note: *It is normal for there to be water in the space under the tank. This should therefore be dried regularly with a clean sponge.*

9. MAKING COFFEE

1. Place the ground coffee filter (C2) or (C3) in the filter holder (C1) (fi . 11).
2. Fill the filter with ground coffee (fi . 12). Make sure to use finely ground coffee specifically for espresso.

3. Distribute the ground coffee evenly and press gently down with the presser (C6) (fi . 13). Make sure the coffee is at the right level after tamping. You may need to add more coffee.
4. Remove any excess coffee from the rim of the filter holder and attach it to the appliance (fi . 7).
5. Place the cup or cups under the filter holder spouts
6. Make sure the lights corresponding to the coffee buttons are on, then press the coffee button  (B1) or  (B3).
7. The appliance proceeds to make the coffee and delivery stops automatically.
8. To remove the filter holder, turn the handle from right to left.

Please note:

- For correct operation, before filling with ground coffee, make sure there are no coffee residues left in the filter holder from the last time you made coffee.
- While the appliance is making coffee, delivery can be interrupted at any moment by pressing the coffee button pressed previously.
- At the end of delivery (within 3 seconds), to increase the amount of coffee in the cup, press and hold the coffee button pressed previously. Delivery stops automatically after a few seconds.
- To avoid splashes, never remove the filter holder while the appliance is delivering coffee. Always wait for a few seconds after delivery.

9.1 Pressing the coffee:

Correct pressing of the ground coffee is essential to obtain a good espresso.


- If you press too firmly, the coffee will be delivered slowly and will be strong.
- If you press too lightly, the coffee will be delivered quickly and will be weak.

9.2 Tips for a hotter coffee

- Before making the coffee, warm the cups by rinsing them with a little hot water.
- Attach the filter holder (C1) with the filter (C2) or (C3) to the appliance, but **without adding coffee**. Using the same cup as will later be used to make the coffee, press the 1 cup button and deliver hot water into the cup to heat it.
- Increase the coffee temperature in the settings menu (see "14. SETTINGS MENU").
- Stand the cups you will be using on the cup warmer (A4) which becomes hot during operation.

10. HOW TO MAKE ESPRESSO COFFEE USING PODS

1. Place the pod coffee filter (C4) in the filter holder (C1) (fi . 14).

- Insert the pod, centring it as far as possible on the filter (fig. 15). Always follow the instructions on the pod pack to position the pod on the filter correctly.
- Attach the filter holder to the appliance (fig. 7).
- Place the cup under the filter holder spouts.
- Make sure the lights corresponding to the coffee buttons are on, then press the coffee button  (B1).
- The appliance proceeds to make the coffee and delivery stops automatically.
- To remove the filter holder, turn the handle from right to left.

10.1 Choosing the pod

use pods conforming to the ESE standard, indicated on the pack by the symbol.



The ESE standard is a system accepted by leading pod producers and enables espresso coffee to be prepared simply and cleanly.



Please note:

- When using pods, you can only make one coffee at a time.**
- While the appliance is making coffee, delivery can be interrupted at any moment by pressing the coffee button pressed previously.
- At the end of delivery (within 3 seconds), to increase the amount of coffee in the cup, press and hold the coffee button pressed previously. Delivery stops automatically after a few seconds.
- To avoid splashes, never remove the filter holder while the appliance is delivering coffee. Always wait for a few seconds after delivery.
- See section "9.2 Tips for a hotter coffee".



11. PROGRAMMING THE QUANTITIES OF COFFEE IN THE CUP

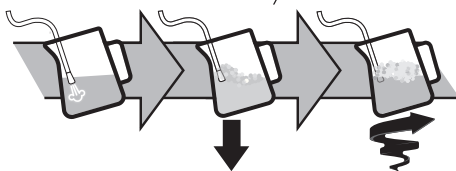
The appliance is set by default to automatically deliver standard quantities. To change these quantities, proceed as follows:

- Place one or two cups under the filter holder spouts (C1).
- Press and hold the button you want to programme ( or .
- The coffee maker starts delivering coffee and the other coffee button flashes to indicate that the appliance is in programming mode.
- Once the required quantity of coffee has been delivered into the cup, release the button. Delivery stops and the light flashes to indicate that the quantity has been saved correctly.

	Default quantity	Programmable quantity
	35 ml	from ≈ 15 to ≈ 90 ml
	70 ml	from ≈ 30 to ≈ 180 ml



12. HOW TO MAKE CAPPUCCINO COFFEE

- To use tall glasses, remove the drip tray (A9) and stand the glasses on the mug and glass tray (A10) (fig. 16).
- Prepare the espresso coffees as described in the previous sections, using sufficiently large cups.
- Fill the milk jug with fresh milk at refrigerator temperature (fig. 17). The milk doubles or triples in volume.
- Press the  button (fig. 18). The light flashes. When the light remains on steadily, the machine is ready to deliver steam.
- Place the jug under the steam wand (A11). Immerse the wand and turn the dial to the  position (fig. 19).



- To froth the milk, rest the steam wand on the surface of the liquid. This mixes air with the milk and steam.
- Keep the steam wand in contact with the surface, taking care not to let in too much air and create excessively large bubbles.
- Immerse the steam wand below the surface of the milk, this creates a vortex in the liquid.
- Once the milk is heated to the desired temperature, press the steam button again and wait for the flow of steam to stop completely before removing the milk jug from the machine.
- Pour the frothed milk into the cups containing the espresso coffee prepared previously. The cappuccino is ready. Sweeten to taste and, if desired, sprinkle the froth with cocoa powder.

Please note:

- To prepare more than one cappuccino, first make all the coffees then at the end prepare the frothed milk for all the cappuccinos;
- Press any button to exit the steam function. The  and  lights flash to indicate that the cooling cycle must be performed.

- You should not deliver steam for more than 60 seconds.



12.1 Tips:




- Recommended quantity for each cappuccino: 100 ml.
- For a denser more even froth, use milk at refrigerator temperature (about 5 °C).
- When the machine is ready to froth the milk, before proceeding, place an empty container under the wand and open the steam dial to eliminate the air from the steam circuit. Close the steam dial and proceed with preparation.

12.2 Cleaning the steam wand


1. After use, always wipe the steam wand with a cloth to remove residual deposits of milk (fi . 20). For in-depth cleaning, we recommend using Eco MultiClean. This ensures maximum hygiene by removing milk proteins and fats and can be used to clean the entire machine.
2. Deliver steam for a few seconds to clean the wand (fi . 21)
3. Wait until the steam wand has cooled down. To ensure the wand works efficiently over time, use the special cleaning tool (C7) to make sure the holes are not blocked (fi . 22).

12.3 Cooling cycle

After using the steam function, the two lights  and  on the appliance flash simultaneously to indicate that the boiler must be cooled to the correct temperature for making espresso. Proceed as follows:

- place a container under the cappuccino maker;
- open the steam dial to deliver steam and hot water. The  light flashes (fig. 23);
- when the lights ( and ) flash, the boiler has cooled down and delivery stops; close the steam handle again (fi . 24). The appliance is now ready for use.

13. HEATING WATER

1. Place a recipient under the steam wand (A11).
2. Wait for the coffee lights (B1) and (B3) to come on steadily.
3. Turn the dial (A12) to the  position. Hot water is delivered from the steam wand.
4. To interrupt hot water delivery, turn the dial to the 0 position.

You should not deliver hot water for more than 60 seconds.

14. SETTINGS MENU

To access the menu, make sure the appliance is ready for use, then press and hold the  button for 10 seconds until the three buttons flash in sequence:

The appliance is now in programming mode.


Set the coffee maker as you wish, then exit the settings menu by waiting for 15 seconds.

Please note:

If no selections are made for 15 seconds, the appliance automatically exits programming and is ready for use again.

14.1 Setting coffee temperature

To modify the temperature of the water used to make the coffee, proceed as follows:

1. Access the settings menu;
2. Press the  button to enter the coffee temperature selection mode.

The lights corresponding to the current selection come on:



3. The lights start flashing in sequence;
4. Press the button corresponding to the required temperature:



5. The button  flashes to indicate that the selection has been saved.

The appliance exits the menu and is ready for use.

Please note:

This is the temperature of the water in the thermoblock. It is therefore not the temperature of the beverage in the cup or the temperature of the beverage at the moment of release from the outlets of the filter holder.


14.2 Setting water hardness

- The light (B7) indicating that the appliance needs descaling comes on after a period of operation established according to water hardness.

The appliance can also be programmed according to the hardness of the mains water in the various regions so that descaling needs to be performed more or less frequently.




Proceed as follows:

1. Access the settings menu;

- Press the  button to enter the water hardness selection mode. The lights corresponding to the current selection come on:



- The lights start flashing in sequence;
- Press the button corresponding to the water hardness in your area:

 soft water	 medium water	 hard water
<10°dH	10°dH - 20°dH	>20°dH
<18°FH	18°FH - 36°FH	>36°FH
<180mg/l CaCO ₃	180-300mg/l CaCO ₃	360mg/l CaCO ₃


- The  button flashes to indicate that the selection has been saved.

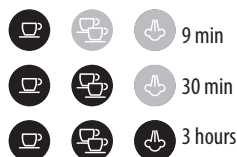
The appliance exits the menu and is ready for use.

14.3 Adjusting auto-off (stand-by)

To save energy, an auto-off function turns the appliance off when not used for a long period.

To turn it back on again, press any button on the control panel.

- Access the settings menu;
- Press the  button to enter the auto-off time selection mode. The lights corresponding to the current selection come on:



- The lights start flashing in sequence;
- Press the button corresponding to the required time:







- The  button flashes to indicate that the selection has been saved.

The appliance exits the menu and is ready for use.

15. DEFAULT VALUES (RESET)

This resets the machine to the default values.

Proceed as follows:

- Position the steam wand (A11) on the drip tray (A9);
- Access the settings menu.
- Turn the steam dial (A12) to the  position;
- Press the  button. The three lights flash simultaneously to confirm that the original settings have been restored.
- The  and  lights flash to indicate that the steam dial must be closed again (○ symbol).

When the steam dial has been closed, the appliance is ready for use.

16. CLEANING THE MACHINE

The following parts of the machine must be cleaned regularly:

- drip tray (A9)
- coffee filters (C2), (C3) and (C4);
- coffee spouts (A5);
- water tank (A3);
- steam wand (A11) as described in section "12.2 Cleaning the steam wand";

Important!

- None of the components or accessories is dishwasher safe.
- Do not use solvents, abrasive detergents or alcohol to clean the coffee machine.
- Do not use metal objects to remove encrustations or coffee deposits as they could scratch metal or plastic surfaces.
- If the appliance is not used for more than a week, before using it again, we recommend you perform a rinse cycle as described in section "8. Setting up the appliance".

Danger!

- Never immerse the coffee maker in water when cleaning: it is an electrical appliance.
- Before commencing any cleaning operation on the outside of the machine, turn it off, unplug it from the mains socket and wait for it to cool down.

16.1 Cleaning the drip tray

Important!

The drip tray is fitted with a level indicator (red) showing the level of water it contains. Before the indicator protrudes from the cup tray (fig. 25), the drip tray must be emptied and cleaned, otherwise the water may overflow the edge and damage the appliance, the surface it rests on or the surrounding area.

- Remove the drip tray (A9) (fig. 26).
- Remove the cup grille (A7), empty the water and clean the tray with a cloth, then reassemble the drip tray. Extract the mug or glass tray (A10), clean with water, dry and put back in the machine;

- Put the drip tray back in place.

16.2 Cleaning the coffee filters

The coffee filters are designed to achieve the best possible coffee froth. To keep them efficient, they must always be kept clean and free of any coffee residue.

- After each use, rinse the filter with abundant running water (fig. 27), then press the perforated filter to make sure it is properly seated (fig. 28);
- check that the hole on the back of the filter (see fig. 29) is free of any residue.

If the filter is still dirty, or in any case at least once a month, clean the coffee filters as follows:

- Extract the perforated filter by pulling the tab (fig. 30).
- Rinse the filters under running water (fig. 31).
- Make sure the holes are not blocked. If necessary, clean with a needle (fig. 29-31).
- Wipe dry with a cloth.
- Put the perforated filter back in its seat and push down fully (fig. 28).

Pod filter

Rinse with running water. Make sure the holes are not blocked. If necessary, clean with a needle (fig. 29-31).

16.3 Cleaning the coffee spouts

After every 200 coffees, rinse by delivering about 0.5 litres of water from the spouts (press the coffee button without using ground coffee).

16.4 Other cleaning operations

- Do not use solvents or abrasive detergents to clean the coffee maker. Use a soft damp cloth only.
- Clean the filter holder cup.

16.5 Cleaning the water tank

- Clean the water tank regularly (about once a month) and whenever you replace the water softener filter (if present) with a damp cloth and a little mild washing up liquid;
- Remove the filter (if present) and rinse with running water;
- Put the filter (if present) back in the appliance, fill the tank with fresh water and put back in the machine;
- Deliver 100ml of water (models with water softener filter only).

17. DESCALING


Important!

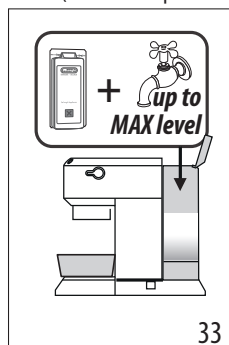
- Before using the descaler, (C9) read the instructions and the labelling on the pack.
- Use De'Longhi descaler only. Using unsuitable descaler and/or performing descaling incorrectly may result in faults not covered by the manufacturer's guarantee.


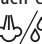

- Descaler can cause damage to delicate surfaces. If the product is accidentally spilt, dry immediately.

To descale

Descaler	De'Longhi descaler
Container	Capacity 1 L
Time	~25min

- When the orange  light comes on, you need to descale the appliance.
- Make sure the filter holder is not attached and position a recipient under the hot water spout and boiler outlet (fig. 32).
- Dilute the descaler provided with water and pour the solution into the tank (fill the tank up to the MAX level) (fig. 33)



- Press and hold the  button for 10 seconds until the three buttons flash in sequence.
- Turn the steam dial to .
- Press the  button to start descaling.
- The descaling programme starts and descaler liquid comes out of the steam wand. The descale programme removes limescale deposits from inside the appliance by automatically performing a series of rinses and pauses until the tank is empty.

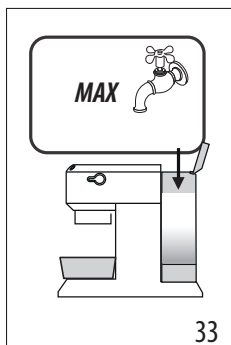
Please note:

During descaling, **close the steam dial** from time to time to deliver small quantities of descaler from the coffee spouts to clean the coffee circuit.

Delivery stops and the orange  light continues to flash to indicate the descaling cycle is still underway.

You now need to rinse the appliance.

- Empty the recipient used to collect the descaler solution and reposition it under the spouts.



9. The machine is ready for rinsing with fresh, clean water. Extract the water tank, empty, rinse under running water, fill with fresh water up to the MAX level (fig. 34) and put back in the appliance.

10. Make sure the steam dial is in the position, then press the button to start rinsing. During descaling, **close the steam dial from time to time** to deliver small quantities of water from the coffee spouts to clean the coffee circuit.
11. Perform a second rinse cycle from points 7 to 9 with the filter inserted (if present previously).
12. When the water tank is empty, the orange light goes off and descaling is complete. The and lights flash
13. Turn the steam dial to 0.
14. Fill the tank with fresh water.

The machine is now ready for use.

18. EXPLANATION OF INDICATOR LIGHTS

Lights	Operation	Meaning
	The ON/OFF button is turned on	The appliance performs a self-diagnosis cycle, indicated by sequential flashing of the lights
	When the appliance is turned on	Flashing lights: the appliance is heating up to make coffee Lights on steadily: the appliance is ready to make coffee
	Steam dial open	Lights flashing: close the steam dial
	Cooling cycle required	Proceed as described in section "12.3 Cooling cycle".
	The water tank is empty or the machine does not make coffee	The lights flash rapidly. See section "8. Setting up the appliance"
	The steam function is required	Flashing light: the appliance is heating up to deliver steam Light on steadily: the appliance is ready to deliver steam
 orange flashing	The appliance needs descaling	Descalc the appliance, the operation is complete when the light goes off

19. TROUBLESHOOTING

Problem	Cause	Solution
Espresso coffee is not delivered any more	No water in the tank	Fill the tank
	The holes in the filter holder are blocked	Clean the filter holder spout holes
	The filter is blocked, or the perforated filter is missing	Clean as described in section "16.2 Cleaning the coffee filters"
	The tank has been inserted incorrectly and the valves on the bottom are not open	Press the tank down lightly to open the valves on the bottom
	Limescale in the water circuit	Descale as described in section "17. Descaling"
The espresso coffee drips from the edges of the filter holder rather than the holes	The filter holder has been inserted incorrectly or is dirty	Attach the filter holder correctly and rotate firmly as far as it will go
	The espresso boiler gasket has lost elasticity or is dirty	Have the espresso boiler gasket replaced by Customer Services
	The holes in the filter holder spouts are blocked	Clean the filter holder spout holes
	The filter is blocked, or the perforated filter is missing	Clean as described in section "16.2 Cleaning the coffee filters"
The filter holder cannot be attached to the appliance	Too much coffee has been placed in the filter	Use the measure supplied and make sure you are using the correct filter for the type of preparation
The espresso froth is too light (delivered from the spout too fast)	The pre-ground coffee is not pressed down firmly enough	Press the pre-ground coffee more firmly
	There is not enough pre-ground coffee	Increase the quantity of pre-ground coffee
	The pre-ground coffee is too coarse	Use only pre-ground coffee for espresso coffee makers
	The wrong type of pre-ground coffee is being used	Change the type of pre-ground coffee
The espresso froth is too dark (delivered from the spout too slowly)	The pre-ground coffee is pressed down too firmly	Press the coffee down less firmly
	The quantity of ground coffee is too high	Reduce the quantity of ground coffee
	The espresso boiler outlet is blocked	Clean as described in section "16.3 Cleaning the coffee spouts"
	The filter is blocked	Clean as described in section "16.2 Cleaning the coffee filters"
	The pre-ground coffee is too fine	Use only pre-ground coffee for espresso coffee makers
	The ground coffee is too fine or damp	Use pre-ground coffee for espresso coffee makers only and make sure it is not too damp
	Limescale in the water circuit	Descale as described in section "17. Descaling"
→		

Problem	Cause	Solution
After delivering coffee, the filter remains attached to the boiler outlet		Insert the filter holder again, deliver coffee, then remove the filter holder
The appliance does not make any beverage and the lights flash or a few seconds	No water in the tank	Fill the tank with water
	The tank has been inserted incorrectly and the valves on the bottom are not open	Press the tank down lightly to open the valves on the bottom
	The espresso boiler outlet is blocked	Clean as described in section "16.3 Cleaning the coffee spouts"
	The filter is blocked	Clean as described in section "16.2 Cleaning the coffee filters"
	Limescale in the water circuit	Descale as described in section "17. Descaling"
The appliance does not function and all the lights flash		Disconnect the appliance immediately and contact authorised Customer Services.
No milk froth is formed when making cappuccino	Milk not cold enough	Always use milk at refrigerator temperature
	Cappuccino maker dirty	Clean the cappuccino maker as described in section "12.2 Cleaning the steam wand"
	Limescale in the water circuit	Descale as described in section "17. Descaling"



★若有任何需求请与下述地址联系：

☆德龙电器（上海）有限公司

地址：上海市中山北路3553号2101-2116室

电话：(021) 3135 8858 传真：(021) 3135 8262 邮编：200062

客服热线：400 827 1668 网址：<https://www.delonghi.com/zh-cn>

