



咖 啡 机
COFFEE MAKER

使
用
说
明
书



EC235.BK

目 录

1. 基本安全警告	1
2. 基本信息	2
3. 使用之前	2
3.1 检查机器	2
3.2 安装机器	2
3.3 连接机器	2
3.4 设置机器	3
3.5 自动关机	3
3.6 与食品接触部分的清洁与维护	3
3.7 制作卡布奇诺和牛奶咖啡	3
4. 机器描述	4
5. 控制面板描述	5
6. 配件描述	5
7. 首次使用	6
8. 制作意式浓缩咖啡	7
9. 制作卡布奇诺	9
9.1 制作奶咖小贴士	9
9.2 清洁蒸汽杆	9
10. 热水	10
11. 清洁	10
11.1 清洁滴水盘	10
11.2 清洁咖啡过滤器	10
12. 除垢	11
13. 其他清洁操作	12
14. 故障排除	12

1. 基本安全警告

- 有心理、身体或者感官障碍、或不具备足够的经验或者知识的人员（包括儿童）不允许使用该机器，除非有对他们的安全负责的人密切监督并进行指导。
- 必须监督儿童，确保他们不玩弄该电器。
- 指定用途：本机器的设计和制造的用途是制作咖啡、含牛奶饮品和热水。除此之外的用途都是不正确的。在水箱中仅能使用饮用水。切勿制作配件制作说明书上未标明的饮品。制造商对于未正确使用该电器引起的损害概不负责。
- 机器使用后加热部件的表面会持续发烫，机器外部也会根据使用情况持续发烫几分钟。
- 彻底清洁所有部件，特别注意与牛奶接触的部件。
- 请勿让儿童在无人监管的情况下清洁和维修保养本机。
- 在清洁的过程中，切勿将机器浸入水中。
- 重要提示：为防止损坏机器，请勿使用碱性清洁剂清洁；请使用软布，以及在适用情况下使用中性清洁剂清洁机器。
- 本电器仅限家庭使用，不能用于以下场所：商场的员工餐厅，办公室或其他工作环境；牧场旅馆；旅馆、汽车旅馆或其他住宅性环境；家庭式旅馆。
- 如果机器插头或电源线损坏，必须且只能由德龙指定的售后服务人员进行更换，以避免发生各种危险。
- 带有可拆卸电源线的机器：避免机器背面的电源线连接器或插座被溅水。
- 重要提示：带有玻璃表面的型号请注意：如果表面破裂，请勿使用。
- 使用过程中，切勿将咖啡机放在橱柜或厨房单元格内。

安全警告



危险！不遵守该警告可能导致触电伤害，也许会危及生命，

这是一台电器设备，不恰当使用可能导致触电。因此您应该遵守以下安全警告：

- 切勿用湿的手或湿的脚接触该机器。
- 切勿用湿的手接触插头。
- 确保能随时接近机器使用的插座，必要时能拔下机器的插头。
- 直接拔下电源插头，切勿拉扯电源线，以免损坏电源线。
- 要完全断开机器的电源，请拔下电源线插头。
- 如果机器发生故障，不要试图自己检修。关闭电源，拔下插头，并与德龙授权的售后服务中心联系。
- 在对机器进行清洁之前，请先关闭电源，拔下插头，并等待机器冷却。



重要：不遵守该警告可能导致人身伤害或损坏机器。

各种包装（塑料袋、聚苯乙烯泡沫塑料）必须远离儿童存放。

窒息危险。本产品可能含有较小的零部件。清洗和维护期间可能需要拆卸其中的一些小零件。请小心装卸，把小零件置于儿童接触不到的地方。



烫伤危险！不遵守该警告可能会导致烫伤或烧伤。

本机器运作时可能会产生热水和蒸汽，请避免接触飞溅的热水或者蒸汽，且咖啡杯架会变得很烫。

2. 基本信息

2.1 使用说明

使用本机器前，请仔细阅读使用说明书。不遵守使用说明可能导致烧伤或损坏机器。

制造商对由此造成的损坏不负任何责任。



请注意：

安全警告适用于德龙品牌的所有咖啡机。

请将此说明与设备随附的使用说明书一并保存。

如果转让本机器给其他人，请确保将使用说明书同时附送。

3. 使用之前

3.1 检查机器

移除包装后，确保机器表面完好无损，所有的配件齐全。如果机器存在明显的损坏痕迹，请勿使用该机器。请与德龙售后服务中心联系。

3.2 安装机器

安装机器的时候，应该重视以下安全警告：

- 机器会释放出热气，因此将机器放置于工作台时，机器表面、侧面及靠墙部分需留出至少3厘米的空间，咖啡机上方需要留出至少15厘米的空间。
- 若有水渗入，会损坏机器。切勿将该机器放置在水龙头或者水槽附近。
- 若机器中的水结冰会损坏机器，切勿将机器安放在一个室温可能低于零度的房间内。
- 电源线切勿放置在尖锐物体的边缘或接触热的物体的表面（如电热板），这会损坏电源线。

3.3 连接机器

请检查并确认所使用的电源电压与该机器底部铭牌所标示的电源电压是否一致。

本机器必须与具备有效地接线的电源正确连接，且最小的额定电流只能为10安培。

如果电源插座与机器插头不匹配，需由有专业资质的技术人员来替换相匹配的插座。

3.4 设置机器

首次使用机器时，水回路中应无液体。机器在使用中会发出噪音。噪音会随着回路中液体的增加逐渐减小。

3.5 自动关机

当机器在一定时间内未使用（每个型号的时间不一致），机器会自动关机（开启指示灯（B5）熄灭）。

3.6 与食品接触部分的清洁与维护

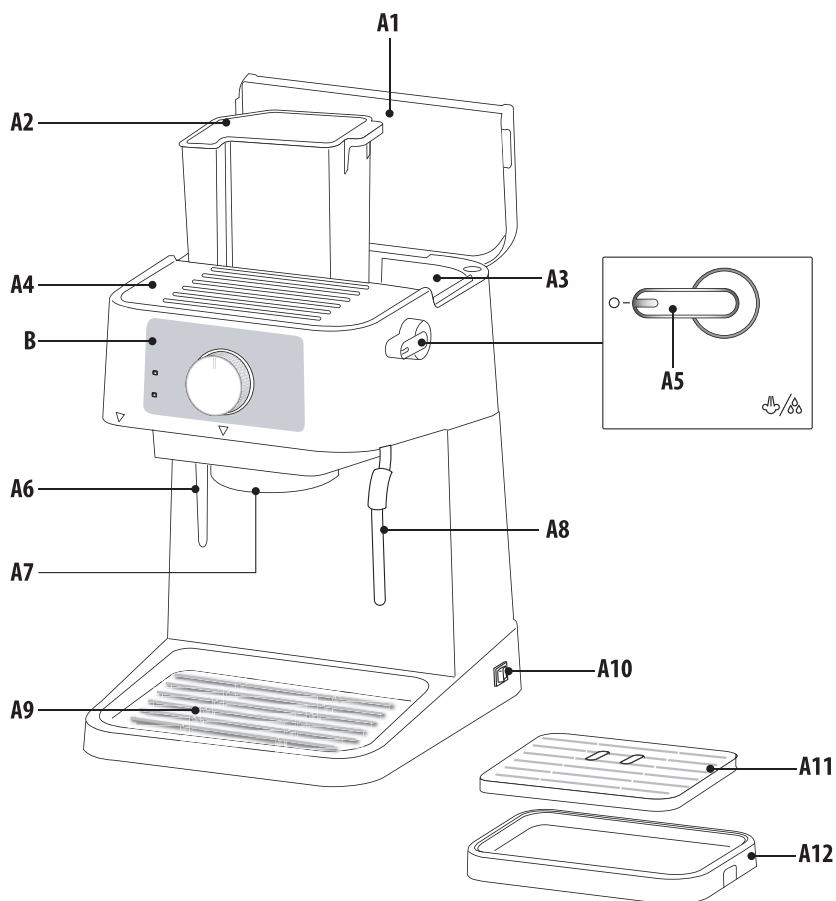
- 首次使用本机器或超过3或4天未使用本机器时，请用热水冲洗可能与水或牛奶接触的所有可拆卸配件。
- 如本机器超过3或4天未使用，请在制作第一杯饮料前，按照使用说明书中的说明冲洗水回路。

3.7 制作卡布奇诺和牛奶咖啡

- 本机器已通过测试，可用于含牛奶或以下植物来源的产品：大豆、大米和杏仁。不得使用其他类型的牛奶或植物来源的产品。
- 在使用任何类型的牛奶后，请对系统进行清洁。请遵循说明书中描述的标准程序进行操作。
- 由制造商提供的，或在说明书中描述的清洁方法无法保证完全去除过敏原。
- 如果发现已确认或疑似的过敏或不耐受症状，确保您的机器在以前没有使用过含有能使您产生过敏反应的过敏原或能使您产生不耐受反应的任何以牛奶或植物来源为基础的产品。

4. 机器描述

A



A1. 顶盖

A2. 可拆卸式水箱

A3. 配件支架（咖啡过滤器）

A4. 杯架

A5. 蒸汽/热水旋钮

A6. 水箱水位视窗

A7. 咖啡流出口

A8. 蒸汽杆

A9. 滴水盘槽

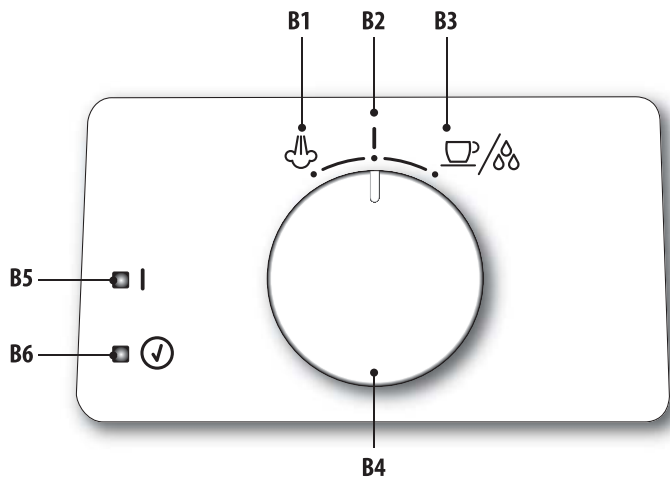
A10. 主电源开关

A11. 滴水盘网格盖板

A12. 滴水盘

5. 控制面板描述

B



- B1. 蒸汽

B2. 开机/待机

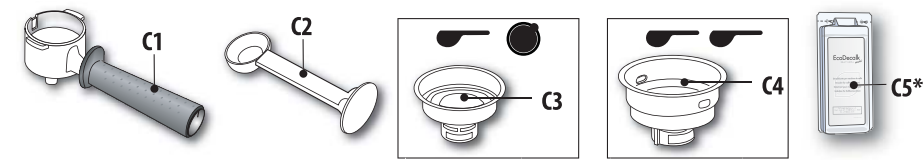
B3. 咖啡/热水
- B4. 模式选择旋钮

B5. 开启指示灯

B6. (✓) 指示灯

6. 配件描述

C



- C1. 过滤器手柄
- C2. 咖啡粉量勺/压粉器
- C3. 1杯咖啡过滤器（可用易理包）
- C4. 2杯咖啡过滤器
- C5. 除垢液（*不包含，需单独购买）

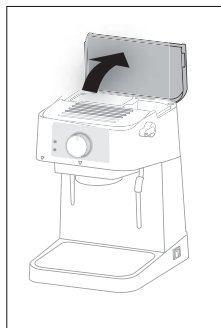
重要提示！

使用之前请用温水仔细清洗所有配件。

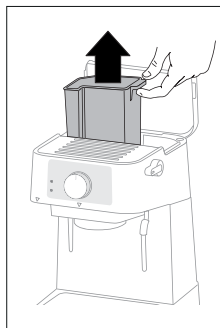
请注意：

我们不断改进产品，因此德龙公司保留一切更改产品技术参数和外观特点的权利，且恕不需另行通知。

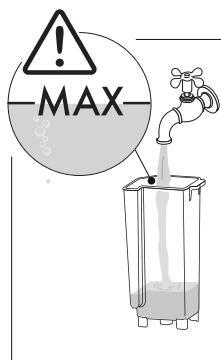
7. 首次使用



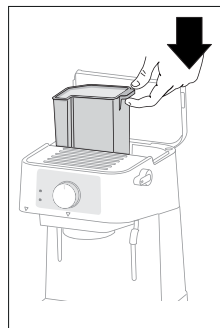
1. 打开机器顶盖。



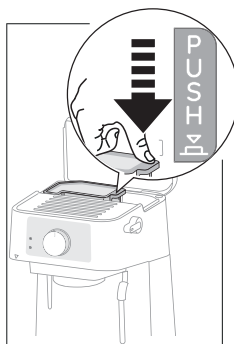
2. 向上取出水箱。



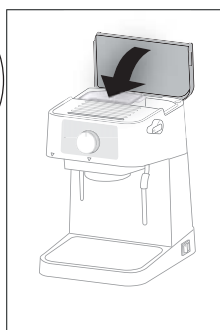
3. 水箱中注入清水，切勿超过-MAX-最高水位线。



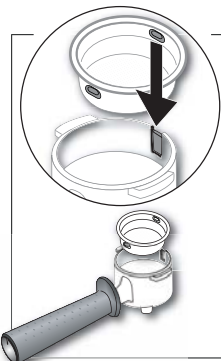
4. 将水箱装回机器。



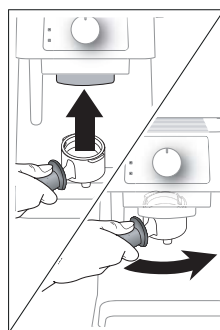
5. 将水箱轻轻下压至底部。



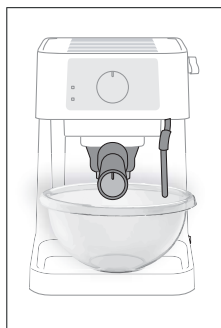
6. 盖上顶盖。



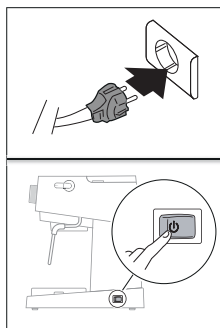
7. 在手柄中放入1杯或2杯咖啡过滤器。



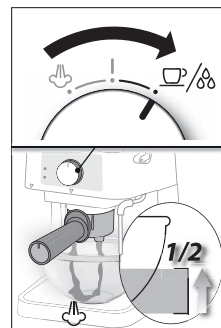
8. 将空手柄安装到机器上。



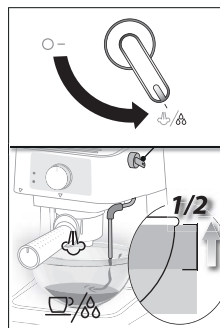
9. 在咖啡流出口和蒸汽杆下方放置一个1升的容器。



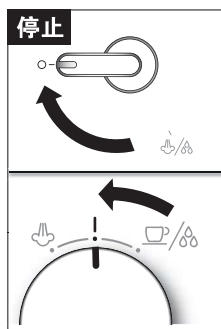
10. 插上电源，模式选择旋钮保持在开机/待机位置，按下机器右侧主电源开关（开启指示灯（B5）亮起），打开机器。



11. 将模式选择旋钮转至☕/🍵位置，从咖啡流出口放水，直至水箱一半水量。



12. 将蒸汽旋钮转至🌀/🍵位置，并将剩余的水从蒸汽杆中排出。



13. 将蒸汽旋钮转回“O”，将模式选择旋钮转到“1”位置。

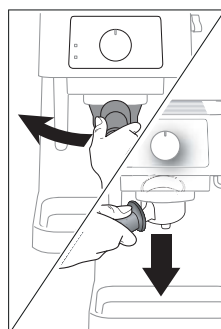


14. 清空容器并将其放回流出口下方（步骤9）。

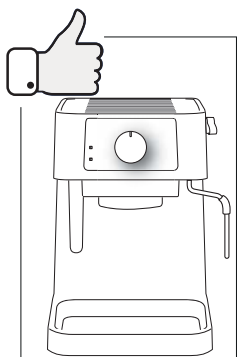


重复操作

步骤
1-6
和
11-14



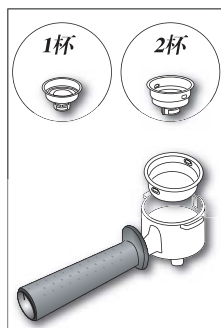
16. 将容器从流出口下方移开，拆下手柄。



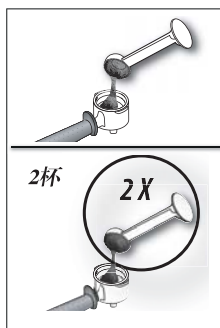
请注意：

- 机器不出水或声音过大：确保水箱已加满并正确放置，重复此操作直至水流出。确保水箱始终下压至指定位置。
- 切勿在水箱无水或未安装水箱的情况下使用机器。请通过水箱水位视窗（A6）检查水箱的水位。
- 水箱装水：可无需取出水箱，直接用水壶往水箱中倒水。
- 连续制作多杯咖啡时，每制作6次需等待6分钟左右。

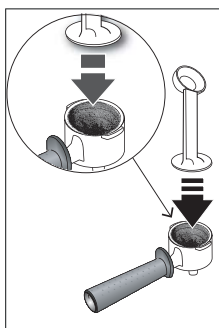
8. 制作意式浓缩咖啡



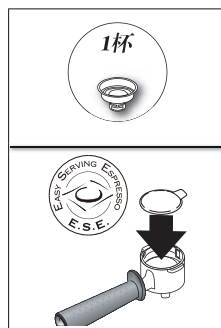
1. 将咖啡过滤器（C3或C4）装到过滤器手柄中。



2. 一量勺咖啡粉（约7g）慢慢倒入1杯咖啡过滤器，防止咖啡粉溢出。如需制作2杯，请在2杯咖啡过滤器中放入2勺松散的咖啡粉（约6+6g）。

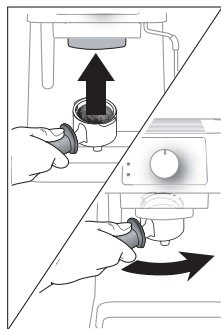


3. 把咖啡粉均匀铺平，用压粉器按压。

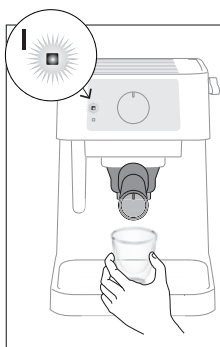


4. 如果您使用易理包：使用1杯咖啡过滤器（C3）并装入易理包，尽量放在居中放置。

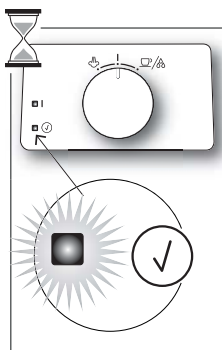




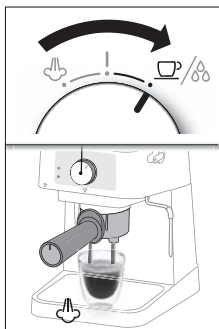
5. 将咖啡过滤器手柄装入机器，尽可能如右图向机器垂直方向逆时针转动扣紧。



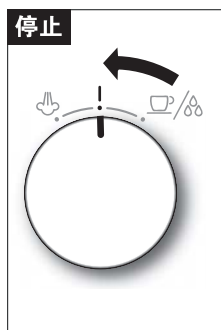
6. 插上电源，模式选择旋钮位于开机/待机位置，按下机器右侧主电源开关（开启指示灯（B5）亮起）。将1个或2个杯子放置在咖啡过滤器的出水口下方。



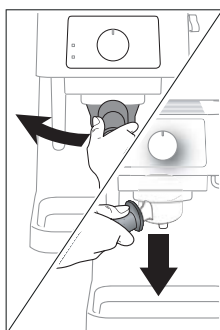
7. 模式选择旋钮保持在开机/待机位置，直至☑指示灯亮起。



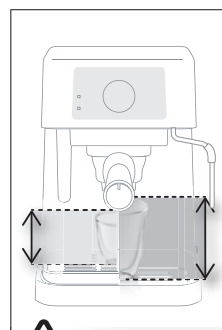
8. 将模式选择旋钮转至☑位置。



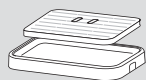
9. 当所需的咖啡量达到后，旋转模式选择旋钮转到“1”位置。咖啡制作完成！



10. 顺时针转动过滤器手柄，移除手柄。



如果您想使用高的杯子（最高10.7厘米），只需取出滴水盘组件即可（A12）。



制作咖啡的时间不能超过60秒。

8.1 制作热咖啡的小贴士

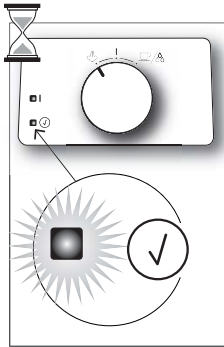
为了在恰当的温度制作意式浓缩咖啡，需要按如下步骤预热咖啡机：

- 按下机器右侧主电源开关开启机器（开启指示灯（B5）亮起），将过滤器手柄安装到机器上，但不添加咖啡粉；
- 在过滤器手柄下方放一个杯子。请使用即将制作咖啡的杯子，从而可以将其预热。
- 等到☑指示灯亮起后，立即将模式选择旋钮旋转到☑位置，让水流出直至指示灯熄灭，然后将模式选择旋钮转到“1”位置停止水流。
- 倒空杯子，等到☑指示灯再次亮起，然后重复操作。（移除过滤器手柄时有一点无害的蒸汽溢出是正常的）。

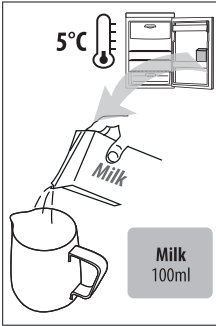
9. 制作卡布奇诺



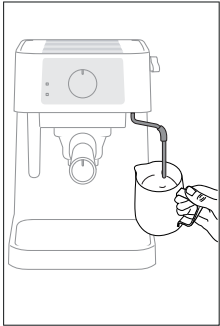
1. 按照之前章节的描述准备一杯意式浓缩咖啡。



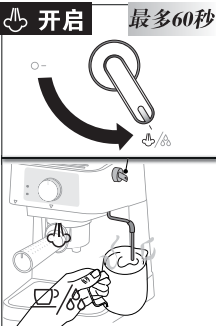
2. 将模式选择旋钮转到蒸汽位置，等待指示灯亮起。



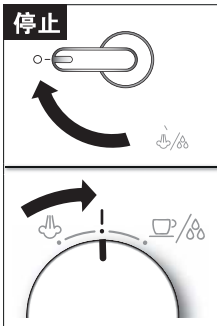
3. 每制作一杯卡布奇诺指需准备大约100毫升的牛奶。



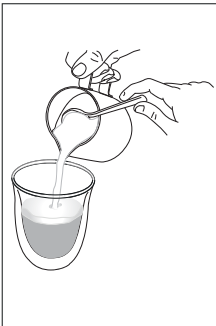
4. 把装有牛奶的奶缸放在蒸汽杆下方。



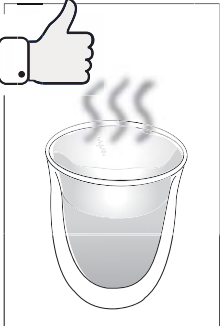
5. 将蒸汽杆浸入牛奶液面下方适当位置，将蒸汽旋钮转到 位置。牛奶量开始增多，表面开始有奶泡。
注：如一开始将蒸汽杆放在牛奶液面以下过深位置，牛奶只会加热，无法制作奶泡。



6. 当达到理想的奶泡状态时，将蒸汽旋钮转到“O”位置，将模式选择旋钮转到“1”位置，以中断蒸汽制作。



7. 将奶泡倒入之前盛有意式浓缩咖啡的杯子中。



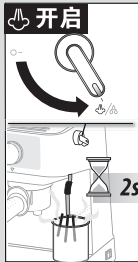
8. 卡布奇诺制作完成。

9.1 制作奶咖小贴士

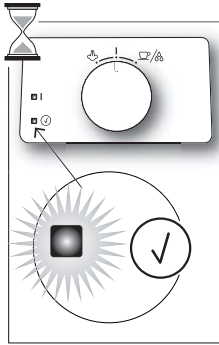
- 为了获得最佳效果，建议使用冰箱冷藏的牛奶（请勿使用热牛奶！）。
- 在选择牛奶容器时，需考虑到牛奶一旦被打发，体积会增加两倍或三倍。
- 如需制作一杯以上的卡布奇诺，请先制作好所有的咖啡，然后再制作奶泡。
- 如需在制作完奶泡后制作咖啡，请先让锅炉冷却一下，否则咖啡会很烫。如需冷却锅炉，请在咖啡流出口下方放置一个容器，将模式选择旋钮转动到 位置，释放水直至 指示灯熄灭。将旋钮转回到“1”位置，然后开始制作咖啡。

9.2 清洁蒸汽杆

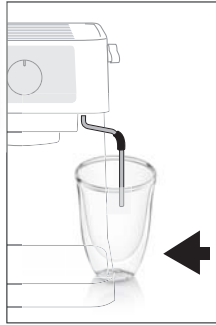
- 旋转蒸汽旋钮至 位置，从蒸汽杆中释放一点热水。
- 等待几分钟，让蒸汽喷嘴冷却下来。
- 用湿布清洁喷嘴。



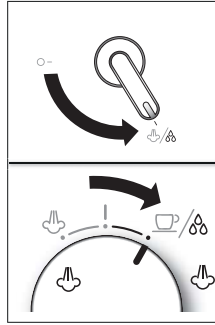
10. 热水



1. 将模式选择旋钮旋转到“1”位置。等待
✓ 指示灯亮起。



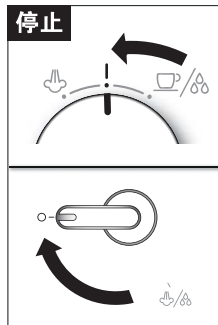
2. 在蒸汽杆下方放一个杯子。



3. 将模式选择旋钮旋转到 ☕/☕ 位置后，立即
旋转蒸汽旋钮至 ☕/☕ 位置。



4. 热水从蒸汽杆流出。



5. 如需停止热水流出，请
将模式选择旋钮转到
“1”位置后，立即将蒸
汽旋钮转到“0”位置。



6. 热水制作完成。



制作热水的时间不能超过60秒。

11. 清洁



- 切勿使用有溶解性、腐蚀性的除垢液或酒精清洁咖啡机。
- 切勿使用金属物体除垢或去除咖啡沉淀物，以避免擦伤金属或塑料表面。
- 危险！**切勿将咖啡机浸没在水中，这是一台电器。
- 如果超过3-4天未使用本机器，我们强烈建议您在再次使用之前，参照“7. 首次使用”章节的描述，进行一次冲洗循环。

11.1 清洁滴水盘

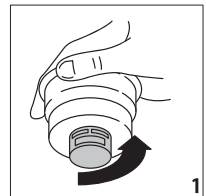
- 取出滴水盘。
- 拆下滴水盘网格盖板(A11)，清空滴水盘中的水，并用布将滴水盘擦干净，然后重新组装滴水盘。
- 将滴水盘装回机器。

11.2 清洁咖啡过滤器

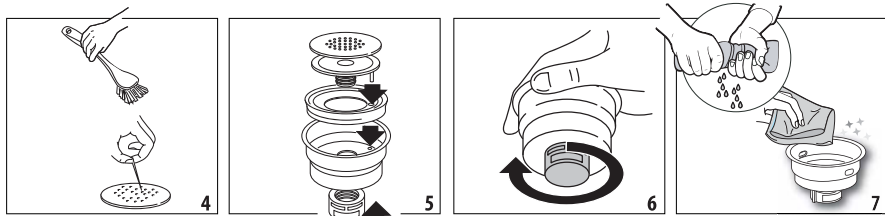
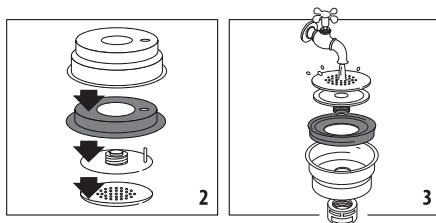
每次使用后需冲洗过滤器。每制作200杯咖啡需彻底清洁一次过滤器。

- 从过滤器手柄上拆下过滤器。

1. 按箭头指示的方向旋转过滤器盖，拆下过滤器盖。



2. 拆开所有部件，用清水冲洗干净。
 3. 用流动的水冲洗过滤器。
 4. 用刷子冲洗流出口过滤片，确保咖啡过滤器上面的小孔没有被堵塞。如有必要，可用别针清洁。
 5. 重新组装部件，确保垫圈正确安装。
 6. 把盖子拧上。
- 用布擦拭干净。咖啡过滤器清洁完成。



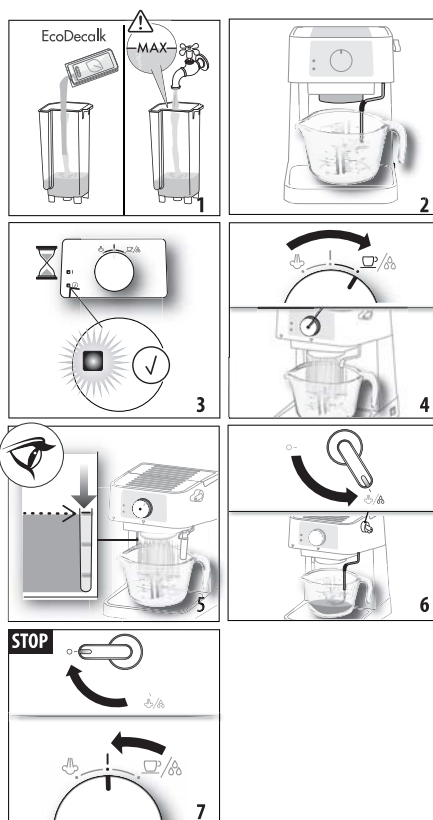
12. 除垢

建议每制作200杯咖啡后使用德龙除垢液（需单独购买）对机器进行除垢。

1. 在水箱中倒入除垢液，用水稀释除垢液至水箱的-MAX-最高水位线。
 2. 确保过滤器手柄没有安装到机器上，并在蒸汽杆下放置一个1升容器。
 3. 插上电源，模式选择旋钮保持在开机/待机位置，按下机器右侧主电源开关（开启指示灯（B5）亮起）。等待✓指示灯亮起。
 4. 将模式选择旋钮转至 ☕/☕ 位置。
 5. 除垢开始：释放水箱体积1/4的除垢溶液（直至水箱水位视窗上的第一个标记）。
 6. 然后将蒸汽旋钮转到 ☕/☕ 位置，从蒸汽杆释放水。
 7. 将蒸汽旋钮转回到“○”位置，模式选择旋钮转到“1”位置停止放水。
- 重复操作第4至7步3次，直到水箱清空；

继续清洁回路：

- 为确保水箱中无除垢液的残留，应彻底冲洗水箱后注入清水至-MAX-最高水位线。（不使用除垢液）；
 - 将模式选择旋钮旋转到 ☕/☕ 位置，并将水排出直至水箱清空；不时地将蒸汽旋钮转至 ☕/☕ 位置，从蒸汽杆释放水。
- 再次重复冲洗：现在机器可以使用。



13.其他清洁操作

- 切勿使用溶解性或腐蚀性的清洁剂清洁机器。用一块柔软的湿布清洁即可。
- 定期清洁咖啡过滤器配件支架。
- 定期（大约一个月一次）用湿布和少许温和清洁剂清洁水箱。

14.故障排除

问题	可能的原因	解决办法
机器关机	模式选择旋钮在开机前位于 ☁ 蒸汽位置	确保每次开机前模式选择旋钮位于 开机/待机位置，再进行开机
咖啡粉太潮湿	您没有添加足够的咖啡粉	再加一点咖啡粉
	未按压好咖啡粉	充分按压咖啡粉
咖啡流出口不出咖啡	水箱没有水	往水箱中加水
	过滤器网孔堵塞	清洁过滤器（参考“11.2清洁咖啡过滤器”）
	机器需要除垢	参照“12. 除垢”章节进行除垢。
咖啡从过滤器手柄边缘流出，而不是从咖啡流出口流出	过滤器手柄安装不正确或太脏	正确安装过滤器手柄，并尽可能将其拧紧
	过滤器手柄上的咖啡流出口堵塞	清洁过滤器手柄上的咖啡流出口
	垫圈失去弹性或太脏	联系售后服务中心更换垫圈
咖啡过冷	选择咖啡制作时 Ⓢ 指示灯未亮起	等待 Ⓢ 指示灯亮起后制作咖啡
	未进行预热	参照“8. 1制作更热咖啡的小贴士”一节的描述预热机器
	咖啡杯未预热	参照“8. 1制作更热咖啡的小贴士”一节的描述预热杯子
	回路中有水垢	参照“12. 除垢”一节所述除垢
咖啡没有油脂	咖啡粉存放时间太长	使用现磨咖啡粉
	咖啡粉不适合做意式浓缩咖啡	使用更细的咖啡粉
	咖啡过滤器里的咖啡粉太少	加入咖啡粉
	咖啡粉按压不充分	将咖啡粉按压得紧实些
泵的噪音太大	水箱无水	往水箱中加水
	水箱安装不正确	轻压水箱，打开水箱底部的阀门

问题	可能的原因	解决办法
	水箱连接处有气泡	参照“10. 热水”章节的描述进行操作。直到开始制作热水为止
拿出水箱时漏水	水箱底部阀门脏或有破损	清洁水箱
	水垢堵塞阀门	根据用户手册中的说明对机器进行除垢
意式浓缩咖啡从过滤器的边缘漏出	过滤器手柄位置不正确	将手柄放入原位并锁定（尽可能地逆时针方向转动）
	过滤器手柄边缘沾满咖啡粉	去除多余的咖啡粉，并用一块湿海绵彻底清洁粉碗
	易理包放置位置不正确	检查易理包是否已正确放入：滤纸不可以超出过滤器
咖啡流速太慢（咖啡从咖啡流出口流出的速度很慢）	咖啡粉压得太紧	减轻压粉的力度
	咖啡粉用量过多	减少咖啡粉的用量
	咖啡过滤器堵塞	参照“11. 2清洁咖啡过滤器”章节描述清洁咖啡过滤器
	咖啡粉研磨过细或受潮	使用意式浓缩咖啡专用咖啡粉，并确保咖啡粉没有受潮
	使用了错误的咖啡粉类型	更换咖啡粉类型
咖啡有酸味	除垢后冲洗不彻底	参照“12. 除垢”章节的描述进行除垢后的冲洗。
制作卡布奇诺时，没有奶泡	牛奶不够冷	使用冰箱冷藏过的牛奶
	蒸汽杆过脏	参照“9. 2. 清洁蒸汽杆”章节的描述清洁蒸汽杆
	回路中有水垢	参照“12. 除垢”章节的描述进行除垢

CONTENTS

1. FUNDAMENTAL SAFETY WARNINGS.....	15
2. GENERAL INFORMATION.....	16
2.1 Instruction for Use.....	16
3. BEFORE USE.....	16
3.1 Checking the appliance.....	16
3.2 Installing the appliance.....	16
3.3 Connecting the appliance.....	17
3.4 Setting up the appliance	17
3.5 Auto-off	17
3.6 Cleaning and maintenance of materials in contact with food	17
3.7 Making cappuccinos and milk-based coffees	17
4. DESCRIPTION OF THE APPLIANCE	18
5. DESCRIPTION OF THE CONTROL PANEL	19
6. DESCRIPTION OF THE ACCESSORIES	19
7. FIRST USE.....	20
8. MAKE ESPRESSO COFFEE	21
8.1 Tips for a hotter coffee.....	22
9. MAKE CAPPUCCINO	23
9.1 Tips for milk beverages.....	23
9.2 Cleaning the steam wand after use	23
10. HOT WATER	24
11. CLEANING.....	24
11.1 Cleaning the drip tray	24
11.2 Cleaning the coffee filters.....	24
12. DESCALING.....	25
13. OTHER CLEANING OPERATIONS	26
14. TROUBLESHOOTING	26

1. FUNDAMENTAL SAFETY WARNINGS

- The appliance is not intended for use by persons (including children) with reduced physical, sensory or mental capabilities, or lack of experience and knowledge, unless they have been given supervision or instruction concerning use of the appliance by a person responsible for their safety.
- Children should be supervised to ensure that they do not play with the appliance.
- Designated use: this appliance is designed and made to prepare beverages based on coffee, milk and hot water. Use drinking water only in the tank. Never use the accessories to make beverages other than those described in these instructions. Any other use is considered improper and thus dangerous. The manufacturer is not liable for damage deriving from improper use of the appliance.
- The surface of the heating element remains hot after use and the outside of the appliance may retain the heat for several minutes depending on use.
- Clean all the components thoroughly, taking particular care with parts in contact with the milk.
- Cleaning and user maintenance shall not be made by children without supervision.
- Never clean by immersing the appliance in water.
- IMPORTANT: to prevent damage to the appliance, do not clean with alkaline detergents; use a soft cloth and, where applicable, neutral detergent.
- This is an household appliance only. It is not intended to be used in: staff kitchen areas in shops, offices and other working environments; farm houses; by clients in hotels, motels and other residential type environments; bed and breakfast type environments.
- If the plug or power cord is damaged, it must be replaced by customer services only to avoid all risk.
- Appliances with removable cord: avoid splashes of water on the power cord connector or socket at the back of the appliance.
- IMPORTANT: Models with glass surfaces: do not use the appliance if the surface is cracked.
- The coffee maker must not be placed inside a cabinet or kitchen unit during use

FOR EUROPEAN MARKETS ONLY:

- This appliance can be used by children aged from 8 years and above if they have been given supervision or instruction concerning use of the appliance in a safe way and understand the hazards involved. Cleaning and user maintenance shall not be made by children unless they are above 8 years old and supervised. Keep the appliance and power cord away from children under 8 years of age.

- The appliance can be used by persons with reduced physical, sensory or mental capabilities or lack of experience and knowledge if they are supervised or have been given instruction concerning use of the appliance in a safe way and if they understand the hazards involved.
- Children shall not play with the appliance.
- Always unplug the appliance when left unattended and before assembly, taking apart or cleaning.



Surfaces marked with this symbol become hot during use (the symbol is present in certain models only).

This is an electrical appliance and may cause electric shock.

You should therefore follow these safety warnings:

- Never touch the appliance with damp hands or feet.
- Never touch the plug with damp hands.
- Make sure the socket used is freely accessible at all times, enabling the appliance to be unplugged when necessary.
- Unplug directly from the plug only. Never pull the cord as you could damage it.
- To disconnect the appliance completely you must unplug it from the mains socket.
- If the appliance is faulty, do not attempt to repair. Turn it off, unplug from the mains socket and contact Customer Services.
- Before cleaning the appliance, turn it off, unplug from the mains socket and allow to cool.

Important!

Keep all packaging (plastic bags, polystyrene foam) away from children.

CHOKING HAZARD. The appliance might contain small parts. Some of those small parts might be required to get disassembled during cleaning and maintenance operations. Handle with care and keep small parts out of reach of children.

Danger of burns!

This appliance produces hot water and steam may form while it is in operation.

During operation (automatic rinsing, hot beverage delivery, steam delivery, cleaning), avoid contact with splashes of hot water or steam.

When the appliance is in operation, the cup shelf could become very hot.

2. GENERAL INFORMATION

2.1 Instruction for Use

Read all the Instruction for Use carefully before using the appliance. Failure to follow this Instruction for Use may result in burns or damage to the appliance.

The manufacturer is not liable for damage deriving from failure to respect this Instruction for Use.

Please note:

These safety warnings are valid for all De'Longhi coffee machines.

Keep this leaflet together with the instructions accompanying the appliance.

If the appliance is passed to other persons, they must also be provided with this Instruction for Use.

3. BEFORE USE

3.1 Checking the appliance

After removing the packaging, make sure the product is complete and undamaged and that all accessories are present. Do not use the appliance if it is visibly damaged. Contact De'Longhi Customer Services.

3.2 Installing the appliance

When you install the appliance, you should respect the following safety warnings:

- The appliance gives off heat. After positioning the appliance on the worktop, leave a space of at least 3 cm between the surfaces of the appliance and the side and rear walls and at least 15 cm above the coffee maker.
- Water penetrating the appliance could cause damage. Do not place the appliance near taps or sinks.

- The appliance could be damaged if the water it contains freezes. Do not install the appliance in a room where the temperature could drop below freezing point.
- Arrange the power cord in such a way that it cannot be damaged by sharp edges or contact with hot surfaces (e.g. electric hot plates).
- The cleaning methods provided by the manufacturer and described in the instructions do not guarantee the complete removal of allergens.
- In the case of confirmed or suspected allergies and intolerances, make sure that your machine has not been previously used with any milk or product of plant origin containing the allergens you are allergic or the substances you are intolerant to.

3.3 Connecting the appliance

Check that the mains power supply voltage corresponds to that indicated on the rating plate on the bottom of the appliance.

Connect the appliance to an efficiently earthed and correctly installed socket with a minimum current rating of 10A only.

If the power socket does not match the plug on the appliance, have the socket replaced with a suitable type by a qualified professional.

3.4 Setting up the appliance

The first time you use the machine, the water circuit is empty and the appliance could be very noisy. The noise becomes less as the circuit fill.

3.5 Auto-off

If the appliance is not used for a certain period of time (variable according to the model), it turns off automatically (the ON pilot light goes out)..

3.6 Cleaning and maintenance of materials in contact with food

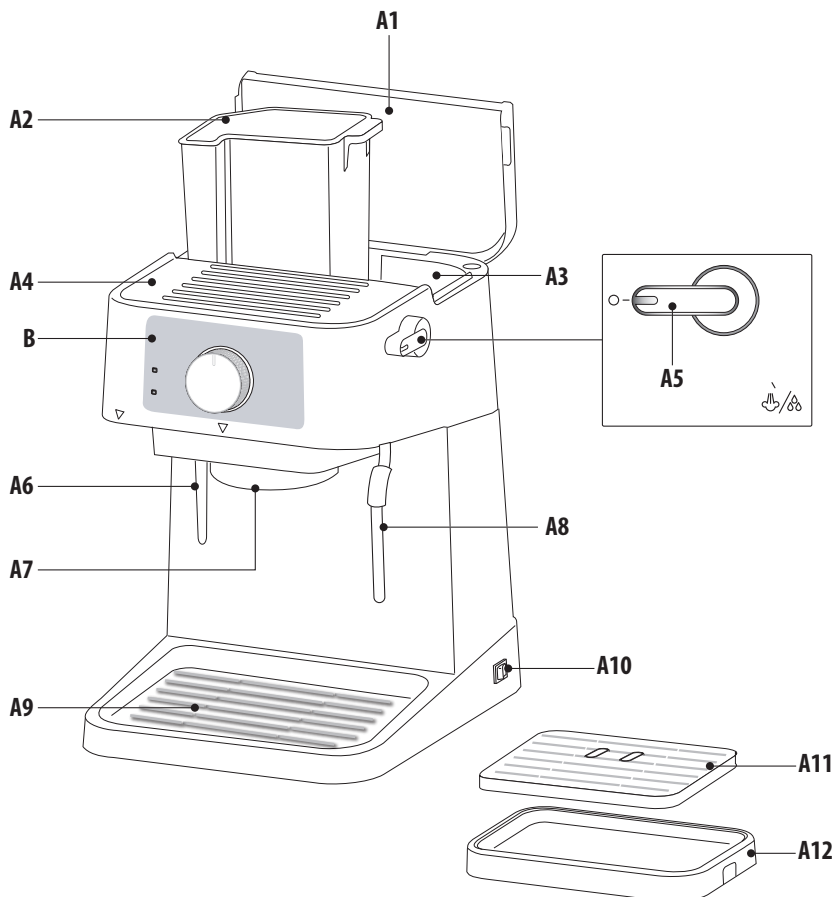
- The first time you use the appliance, or if it is not used for more than 3 or 4 days, rinse all removable accessories which may come into contact with water or milk with hot water.
- If the appliance is not used for more than 3 or 4 days, before making the first beverage, rinse the water circuit as described in this Instruction for Use.
- You should carry out automatic cleaning and guided maintenance scrupulously when proposed by the appliance through the display or the lights described in the manual.
-

3.7 Making cappuccinos and milk-based coffees

- The appliance has been tested for use with cow's milk and the following products of plant origin: soya, rice and almond. No other type of milk or product of plant origin may be used.
- To clean the system, following use with any type of milk, please follow the standard procedures described in the instruction manual

4. DESCRIPTION OF THE APPLIANCE

A

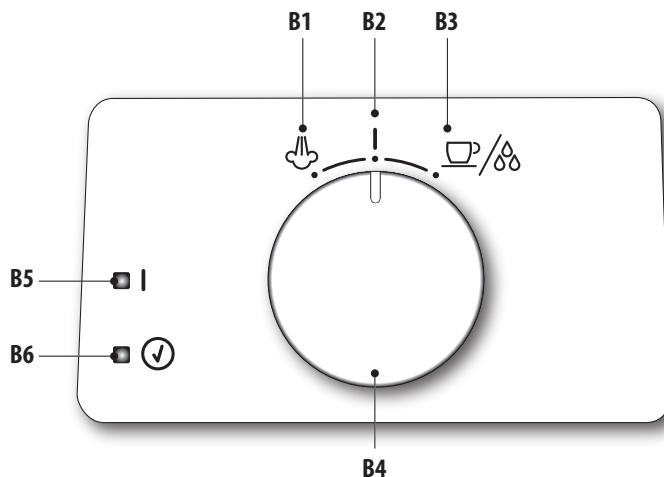


- A1. Lid
- A2. Removable water tank
- A3. Accessories holder (coffee filters)
- A4. Cup shelf
- A5. Steam/hot water delivery knob
- A6. Water level display

- A7. Coffee outlet
- A8. Steam wand
- A9. Drip tray housing
- A10. Main switch
- A11. Drip tray grid
- A12. Drip tray

5. DESCRIPTION OF THE CONTROL PANEL

B

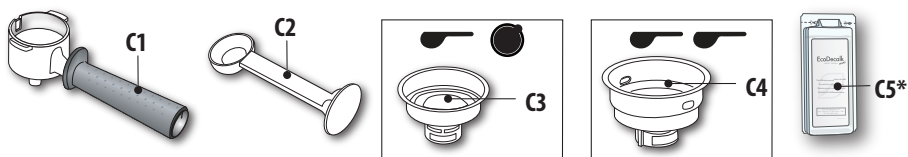


- B1. Steam function
- B2. ON/Standby
- B3. Coffee/Hot water delivery
- B4. Selector dial

- B5. ON pilot light
- B6. READY pilot light

6. DESCRIPTION OF THE ACCESSORIES

C



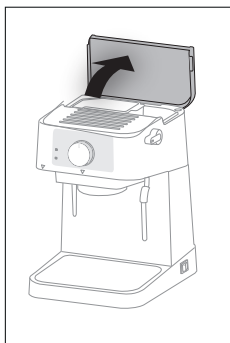
- C1. Portafilter
- C2. Measuring spoon/tamper
- C3. Filter 1 shot (suitable for ESE pod)
- C4. Filter 2 shots
- C5. Descaler (*not included - purchase separately)



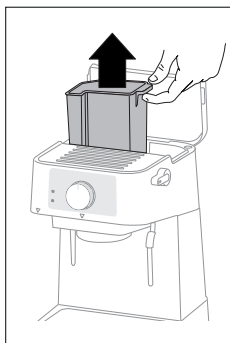
Important!

Carefully clean with warm water all the accessories before use.

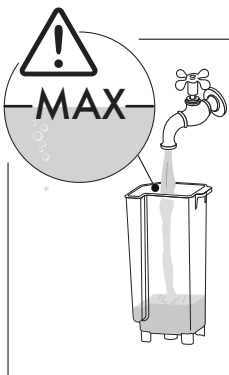
7. FIRST USE



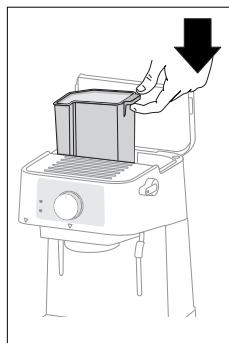
1. Open the lid.



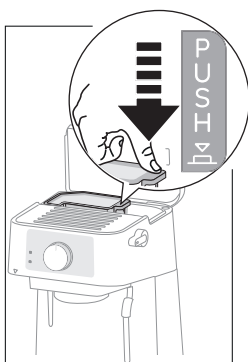
2. Remove the water tank.



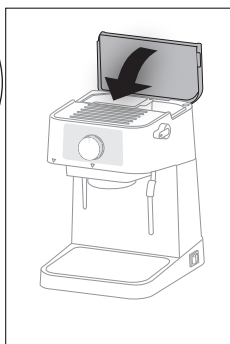
3. Fill the water tank up to the max level.



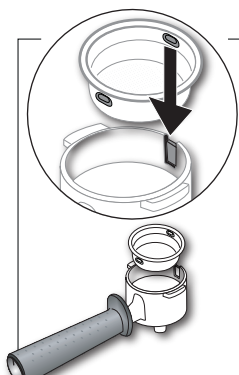
4. Insert the water tank in its housing.



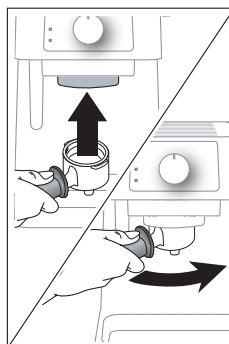
5. Push the water tank down.



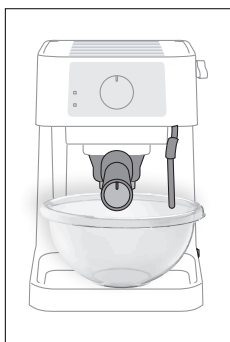
6. Close the lid.



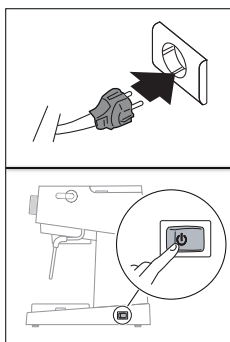
7. Insert the required coffee filter (1 or 2 cups) in the portafilter.



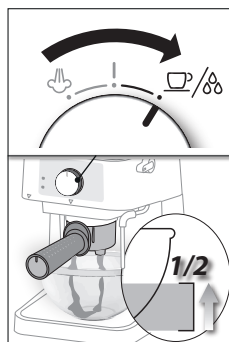
8. Attach the empty portafilter onto the machine.



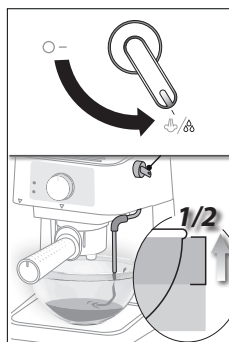
9. Place a container under the spouts (1l capacity).



10. Plug the appliance in and switch on the machine by pressing the main switch.

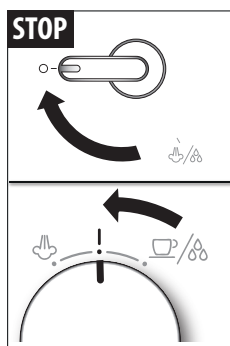


11. Turn the selector dial to ☕ and discharge half the tank from the boiler outlet.

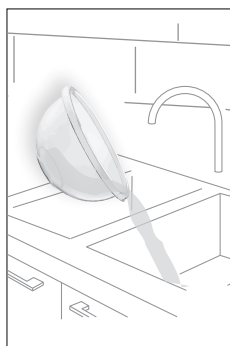
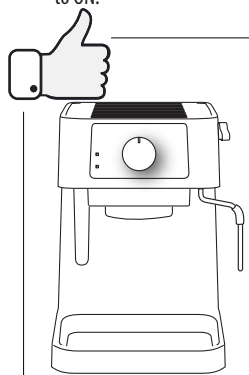


12. Turn the steam dial to ⚡ and discharge the remaining water from the cappuccino maker.

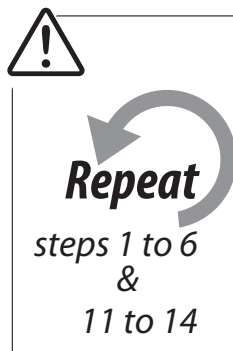
4. FIRST USE



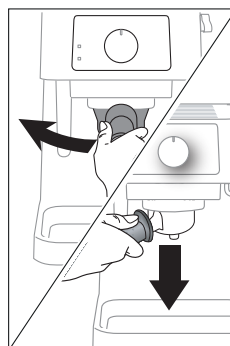
13. Turn the steam dial back to **0** and the selector dial to **ON**.



14. Empty the container and put it back under the spouts (step 9).



15. Proceed with a second rinsing.

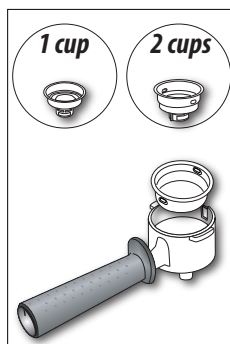


16. Remove the portafilter.

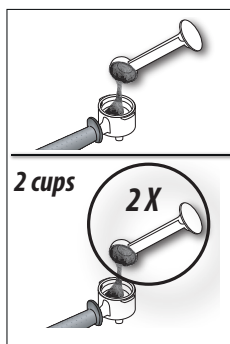
Please note:

- **No water is delivered or the pump is too noisy:** make sure the tank is filled and placed correctly and repeat the operation until water is delivered. Make sure the water tank is pushed all the way down
- Never operate the appliance without water in the tank or without the tank. Check the water level in the water tank by the display (A6).
- **Refilling the water tank:** the water tank can also be filled without extracting it, by pouring the water directly from a jug.
- When making several coffees in a row, wait about 6 minutes every 6 preparations.

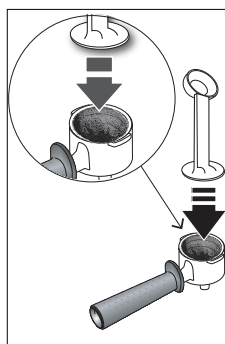
8. MAKE ESPRESSO COFFEE



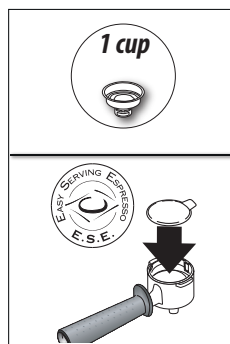
1. Place the ground coffee filter (C3) or (C4) in the portafilter.



2. Place 1 or 2 level measures of preground coffee (about 7g for cup). Fill the filter slowly to prevent the coffee from overflowing.

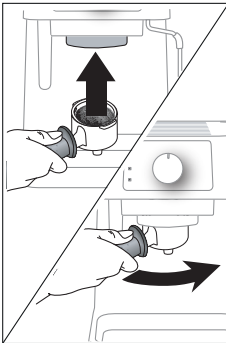


3. Distribute the coffee evenly and press it with the tamper.

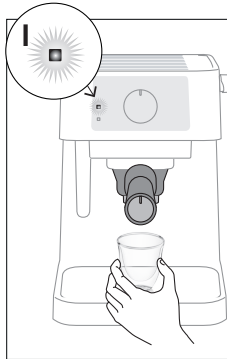


4. If you use pods: use the coffee filter (C3) and insert the pod, centring it as far as possible.

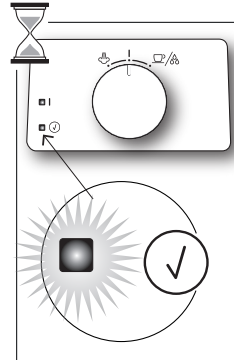
5. MAKE ESPRESSO COFFEE



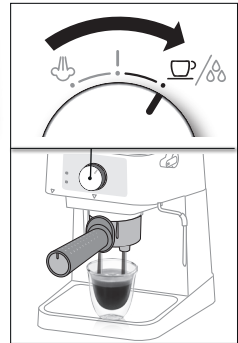
5. Attach the portafilter to the appliance and turn it counterclockwise (always turn as far as it will go).



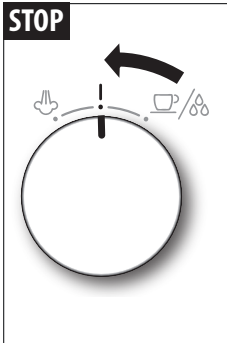
6. Place the cup or cups under the portafilter spouts.



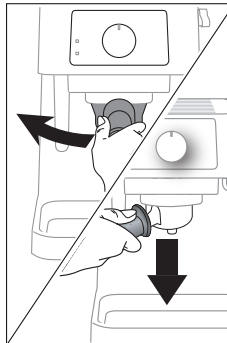
7. Wait until the READY light turns on.



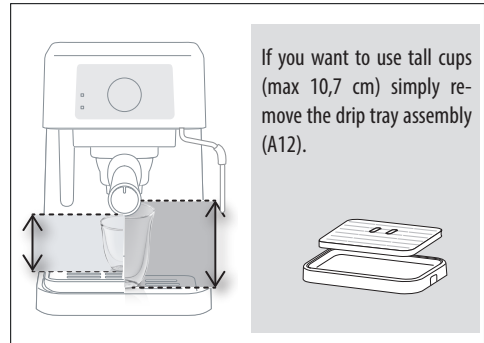
8. Turn the selector to ☕/☕.



9. When the desired coffee has been delivered, turn to **ON** to stop the flow. Coffee is ready!



10. To remove the portafilter, turn the handle clockwise.



You should not deliver coffee for more than 60 seconds.

8.1 Tips for a hotter coffee

To make espresso coffee at the right temperature, the coffee maker should be preheated as follows:

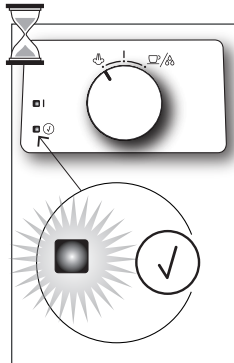
- Turn the appliance on by pushing the main switch (the **I** light turns on) and attach the portafilter onto the appliance without adding pre-ground coffee;
- Place a cup under the portafilter. Use the same cup to be used later to prepare the coffee, in order to preheat it;
- Wait until the **☑** light turns on and immediately afterwards turn the selector dial to ☕/☕ and deliver water until the **☑** light turns off, then stop it by turning the dial to **I**.
- Empty the cup, wait until the **☑** light turns on again and then repeat the operation.

(It is normal for a small and harmless puff of steam to be given off when removing the portafilter).

9. MAKE CAPPUCCINO



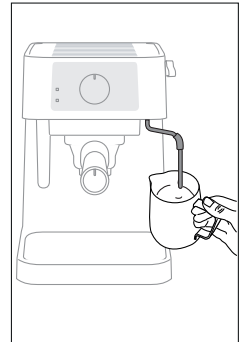
1. Prepare the espresso coffee as described in the previous sections.



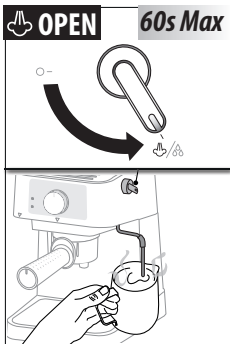
2. Turn the selector to and wait until the light turns on.



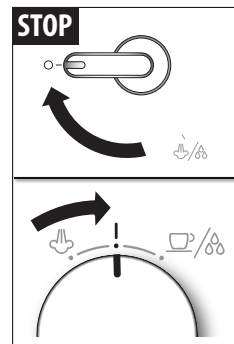
3. Fill a jug with about 100ml of milk for each cappuccino to be prepared.



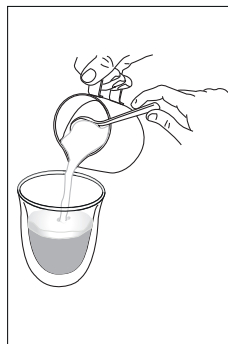
4. Place the jug under the cappuccino maker.



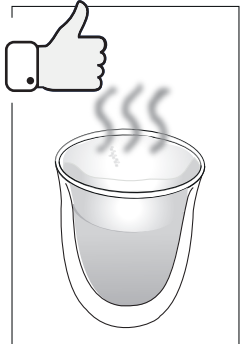
5. Turn the steam dial to . The milk now starts to increase its volume and becomes creamy.



6. Interrupt steam delivery by turning the dial to 0 and turn the selector to I.



7. Pour the frothed milk into the cups containing the espresso prepared previously.



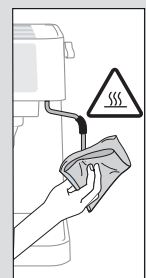
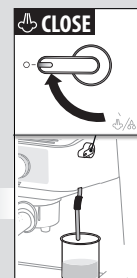
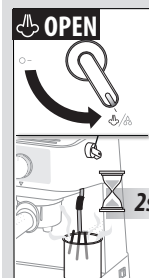
8. Cappuccino is ready.

9.1 Tips for milk beverages

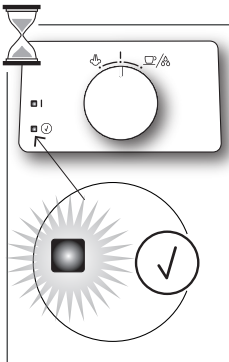
- For best results, the milk must be at refrigerator temperature (not hot!). You are recommended to use skimmed or semi-skimmed milk.
- In choosing the size of the jug, bear in mind that the milk doubles or triples in volume once steamed.
- To prepare more than one cappuccino, make all the coffees first then at the end froth the milk for all the cappuccinos.
- To make coffee again after the milk has been frothed, first cool down the boiler, or the coffee will be burnt. To cool it down place a container under the boiler outlet, turn the selector to and discharge water until the light goes off. Return the selector to I and then proceed making coffee.

9.2 Cleaning the steam wand after use

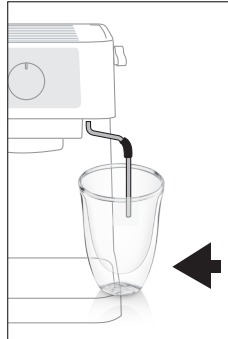
- Discharge a little of hot water from the steam wand.
- Wait for a few minutes to allow the steam spout to cool down.
- Use a cloth to clean the nozzle.



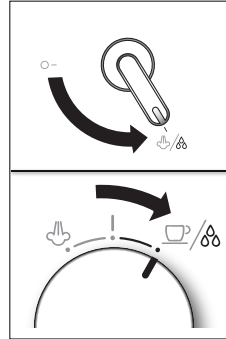
10. HOT WATER



1. Turn the selector dial to **I**.
Wait for the (✓) indicator
light to turn on.



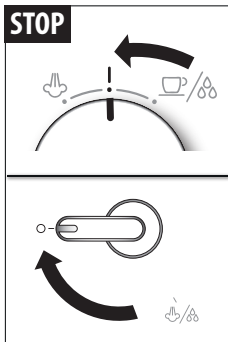
2. Place a cup under the cap-
puccino maker.



3. Turn the dial to ☕/☕
and at the same time,
rotate the steam dial to
☕/☕.



4. Hot water is delivered from
the cappuccino maker.



5. To stop delivery, turn the
selector to **I** and rotate
the steam dial to 0.



6. Hot water is ready.



You should not deliver hot water for more than
60 seconds.

11. CLEANING



- Do not use solvents, abrasive detergents or alcohol to clean the coffee machine.
- Do not use metal objects to remove encrustations or coffee deposits as they could scratch metal or plastic surfaces.
- **Danger!** While cleaning, never immerse the coffee maker in water. It is an electrical appliance.
- If the appliance is not used for more than 3/4 days, before using it again, we strongly recommend you to rinse the internal circuits through, as described in section "7. First use".

11.1 Cleaning the drip tray

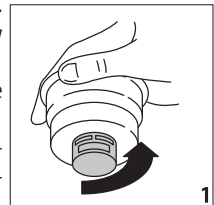
- Remove the tray.
- Remove the cup grid (A11), empty the water and clean the drip tray (A12) with a cloth, then reassemble the drip tray.
- Put the drip tray assembly back in place.

11.2 Cleaning the coffee filters

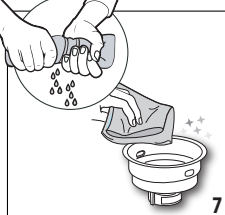
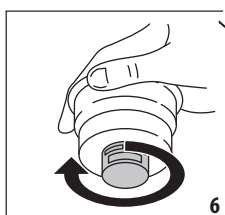
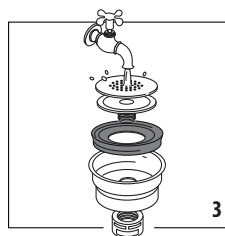
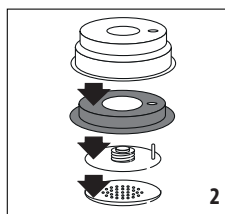
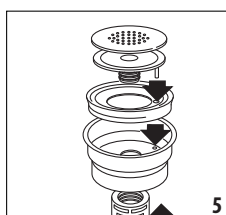
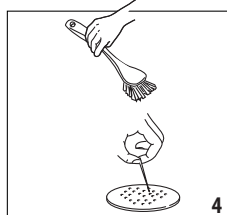
Rinse the filters after each use.
Clean the filters thoroughly every
200 cups of coffee.

- Remove the filter from the portafilter.

1. Remove the filter cap by un-
screwing in the direction indi-
cated by the arrow on the cap.



2. Disassemble all the components and rinse them with fresh water.
3. Rinse the filterers under running water.
4. Clean the perforated filterer with a brush. Make sure the holes are not clogged. If necessary, clean with a pin.
5. Reassemble the components making sure to insert the pin on the plastic disk into the hole in the gasket indicated by the arrow.
6. Screw the cap on.
7. Clean with a cloth. The filterer is ready.



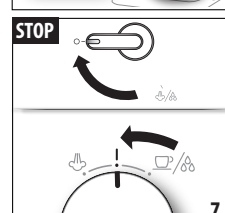
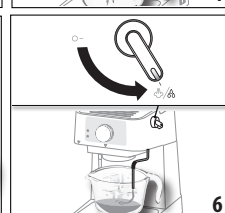
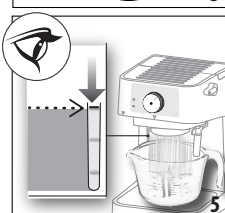
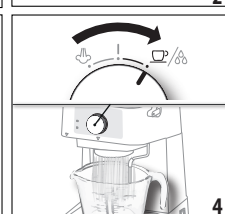
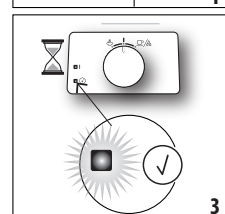
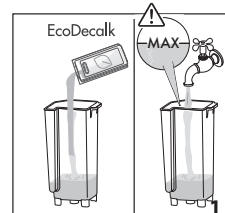
12. DESCALING

We recommend descaling the coffee maker about every 200 coffees using the De'Longhi descaler (purchase separately).

1. Fill the tank with the descaler solution, dilute the descaler with water up to the max level of the tank.
 2. Make sure the portafilter is not attached, and place a container under the cappuccino maker (1l capacity).
 3. Wait until the ✓ light turns on.
 4. Turn the selector to ☕/☕.
 5. Descaling starts: deliver about 1/4 of descaling solution (up to the first mark on the water level display).
 6. From time to time, turn the steam dial to ☕/☕ to discharge steam.
 7. Then interrupt delivery by turning the steam dial back to 0 and the selector dial to I.
- Repeat points 4 to 7 another 3 times, until the tank is empty;

Then proceed rinsing the circuits:




- To eliminate residues of descaler solution, carefully rinse the tank and fill it with clean water (without descaler);
- Turn the selector to ☕/☕ and deliver water until the tank is empty: from time to time turn the steam dial to ☕/☕ to discharge steam.
- Repeat rinsing again: now the machine is ready for use.



13. OTHER CLEANING OPERATIONS

- Do not use solvents or abrasive detergents to clean the coffee maker. Use a soft damp cloth only.
- Clean the filter holder cup regularly.
- Clean the water tank regularly (about once a month) with a damp cloth and a little mild washing up liquid.

14. TROUBLESHOOTING

PROBLEM	POSSIBLE CAUSE	SOLUTION
The appliance switches off	The steam dial is open (on )	Close the steam dial and press the main switch again.
The grounds are very damp	You haven't added enough ground coffee	Add more coffee
	Ground coffee is not tamped enough	Press the ground coffee more
No coffee is delivered	No water in the tank	Fill the tank with water
	Filter is dirty	Clean the filter ("11.2 Cleaning the coffee filters")
	Limescale in the water circuit	Descale as described in section "12. Descaling"
The coffee drips from the edges of the portafilter rather than from the holes	The portafilter has been inserted incorrectly or it is dirty	Attach the portafilter correctly and rotate firmly as far as it will go
	The holes of the portafilter spouts are clogged	Clean the portafilter spout holes
	The espresso boiler gasket has lost elasticity or it is dirty	Have the espresso boiler gasket replaced by Customer Services
The coffee is cold	The  light is not on when coffee delivery is selected	Wait until the  light turns on
	No preheating was done	Pre-heat the machine as indicated in section "8.1 Tips for a hotter coffee"
	The cups were not preheated	Pre-heat the cups as indicated in section "8.1 Tips for a hotter coffee"
	Limescale in the water circuit	Descale as described in section "12. Descaling"
No crema on the espresso	The coffee is too old	Use freshly ground coffee
	The coffee is not suitable for espresso	Use finer ground coffee
	There is too little coffee in the filter	Add ground coffee
	Ground coffee is not tamped enough	Press the ground coffee more
The pump is excessively noisy	The water tank is empty	Fill the tank
	The tank is not correctly positioned	Press the tank down lightly to open the valve on the bottom
	There are air bubbles in the tank connector	Follow the instructions of section "10. hot water" until water is delivered
→		

PROBLEM	POSSIBLE CAUSE	SOLUTION
The water tank leaks when carried	The valve at the bottom of the tank is dirty or defective	Clean the water tank
	The valve is blocked by limescale	Descale your machine according to the instructions in the user manual
The espresso leaks over the edges of the filter	The portafilter is not positioned correctly	Put the portafilter in place and lock it (turning it counterclockwise as far as it will go)
	The rim of the portafilter is encrusted with coffee grounds	Remove excessive coffee grounds and clean the grid through which water passes with a damp sponge
	The soft capsule is positioned incorrectly	Check that the soft capsule has been inserted correctly: the paper must not protrude out of the filter
The coffee is dripping too slowly (delivered from the spout too slowly)	The coffee is pressed down too firmly	Press the coffee down less firmly
	There is too much coffee	Reduce the quantity of coffee
	The filter is clogged	Clean the filter ("11.2 Cleaning the coffee filters")
	The coffee is too fine or damp	Use only pre-ground coffee for espresso coffee makers and make sure it is not damp
	The wrong type of pre-ground coffee is being used	Use a different type of pre-ground coffee
The coffee has an acid taste	Inadequate rinsing after descaling	After descaling rinse the appliance as indicated in section "12. Descaling"
No milk froth is formed when making cappuccino	Milk not cold enough	Always use skimmed or semi-skimmed milk at refrigerator temperature.
	Steam wand dirty	Clean the steam wand ("9.2 Cleaning the steam wand after use")
	Limescale in the water circuit	Descale as described in section "12. Descaling"



★若有任何需求请与下述地址联系：

☆德龙电器(上海)有限公司

地址：上海市普陀区中山北路3553号2101-2116室

电话：(021) 3135 8858 传真：(021) 3135 8262 邮编：200062

客户热线：400 827 1668

网址：www.delonghi.com.cn

