

# ***Ariete***



***Blender***

---

**CE**

**583/1**

---

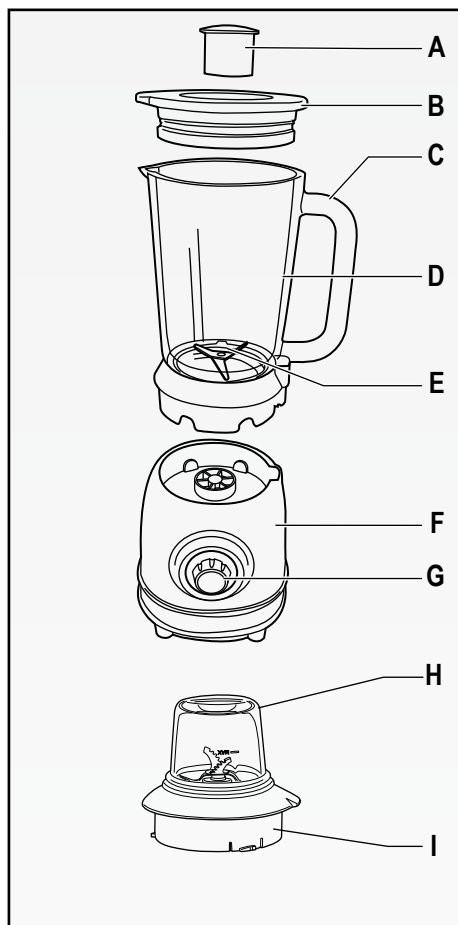


Fig. 1

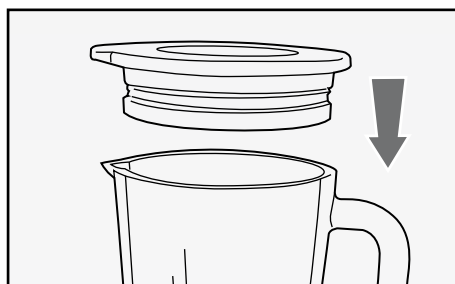


Fig. 2

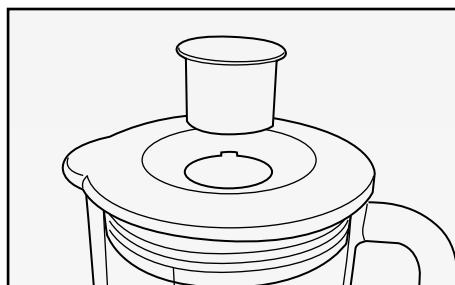


Fig. 3

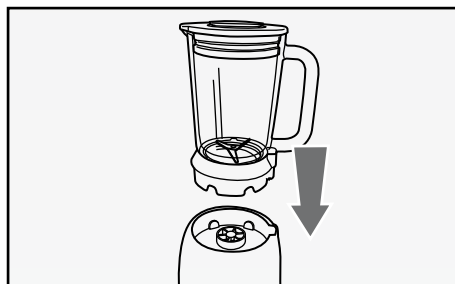


Fig. 4



Fig. 5

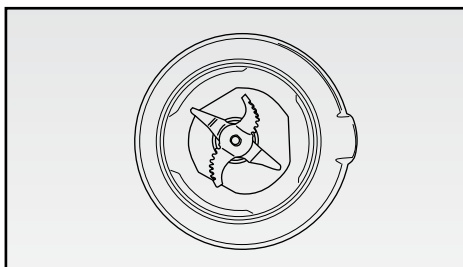


Fig. 6

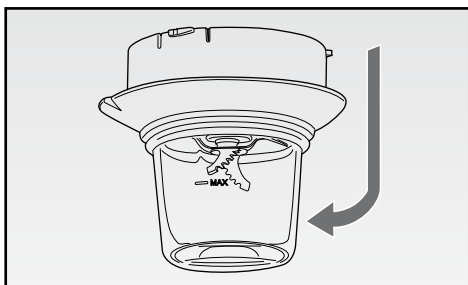


Fig. 7

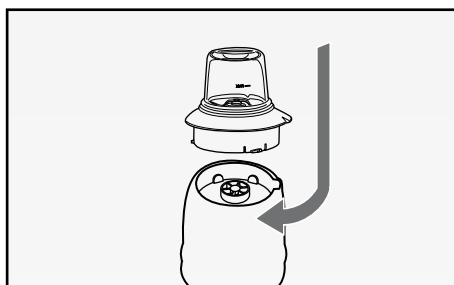


Fig. 8

EN

## IMPORTANT SAFEGUARDS

### READ THESE INSTRUCTIONS BEFORE USE.


The necessary precautions must be taken when using electrical appliances, and these include the following:

1. Make sure that the voltage on the appliance rating plate corresponds to that of the mains electricity.
2. Never leave the appliance unattended when connected to the power supply; unplug it after every use.
3. Never place the appliance on or close to sources of heat.
4. Always place the appliance on a flat, level surface during use.
5. Never leave the appliance exposed to the elements (rain, sun, etc....).
6. Make sure that the power cord does not come into contact with hot surfaces.
7. This appliance must not be used by children. Keep the appliance and related cord out of reach of children.
8. Appliances can be used by persons with reduced physical, sensory or mental capabilities or lack of experience and knowledge if they have been given supervision or instruction concerning use of the appliance in a safe way and if they understand the hazards involved.
9. Children are not allowed to play with the appliance.
10. Never place the appliance body, plug or power cord in water or other liquids; always wipe clean with a damp cloth.
11. Always disconnect the appliance from the supply if it is left unattended and before assembling, disassembling or cleaning.
12. Switch off the appliance and disconnect from supply before changing accessories

or approaching parts that move in use.

13. Always make sure that your hands are thoroughly dry before using or adjusting the switches on the appliance, or before touching the power plug or power connections.
14. Never touch the moving parts.
15. Never place hands in the goblet when the appliance is plugged into the mains power (Fig. 5).
16. The blades are very sharp; take care when cleaning.
17. Do not operate the appliance when it is empty.
18. Never use the appliance if the blade is damaged.
19. Place the foods for blending inside the blender goblet and fit the goblet onto the power base before plugging the appliance into the mains power.
20. The product was designed to work only when the blender goblet and lid are properly assembled. In case it does not occur, contact an authorized service centre.
21. Do not use the handle on the goblet to carry the blender.
22. Wait for the blade to stop completely before removing the cover.
23. To prevent accidents or damage to the appliance, always keep hands and cooking utensils well away from blades and any moving parts.
24. To unplug the appliance, grip the plug and remove it directly from the power socket. Never pull the power cord to unplug the appliance.
25. Should the power cord be damaged, have it be repaired by the manufacturer or related service centre, otherwise by a similar skilled person, to prevent any risk. All repairs, including power cord replacement, are to be carried out only by the Service Centre or the technicians authorized by Ariete, to prevent any risk.
26. In case of using extension leads, these must be suitable for the appliance power to avoid danger to the operator and for the safety of the environment in which the appliance is being used. Extension leads, if not suitable, can cause operating anomalies.
27. Do not threaten the safety of the appliance by using parts that are not original or which have not been approved by the manufacturer.
28. This appliance is designed for HOME USE ONLY and may not be used for commercial or industrial purposes.
29. This appliance conforms to the directives 2014/35/EU and EMC 2014/30/EU, and to the regulations (EC) No. 1935/2004 of 27/10/2004 regarding material in contact with foods
30. Any changes to this product that have not been expressly authorised by the

manufacturer may lead to the user's guarantee being rendered null and void.

31. In the event that you decide to dispose of the appliance, we advise you to make it inoperative by cutting off the power cord. We also recommend that any parts that could be dangerous be rendered harmless, especially for children, who may play with the appliance or its parts.
32. Packaging must never be left within the reach of children since it is potentially dangerous.
33. We decline any responsibility resulting from misuse or any other than those covered in this booklet.
34. Only use this appliance for purpose it is designed for in order to prevent accidents and damage.
35. Keep this manual close by future consultation. Should you decide to give this appliance to other people, please remember to also include these instructions.
36. This appliance is intended to be used in household and similar applications such as:
  - staff kitchen areas in shops, offices and other working environments;
  - farm houses;
  - by clients in hotels, motels and other residential type environments;
  - bed and breakfast type environments.
37. Be careful when handling the sharp cutting blades, emptying the bowl and during cleaning.
38. Be careful if hot liquid is poured into the food processor or blender as it can be ejected out of the appliance due to a sudden steaming.
39. Details on how to clean the appliance, please refer to the section "CLEANING"
40.  For disposing the appliance in an adequate manner, according to the European Directive 2012/19/EC, please read the appropriate leaflet attached.

**DO NOT THROW AWAY THESE INSTRUCTIONS**

## DESCRIPTION OF THE APPLIANCE (Fig. 1)

- A Measuring cap
- B Lid
- C Handle
- D Graduated glass goblet
- E Blades
- F Motor unit
- G Operation dial (Pulse - 0 - 1 - 2 - 3 - 4)
- H Multimill container (if available)
- I Multimill blade (if available)

## BLENDER USE INSTRUCTIONS

- Make sure the appliance is unplugged and the operation dial (G) is on position "0".
- Cut fruit and vegetable into small pieces and place them into the goblet (D) adding water or milk in an amount, which does not exceed the MAX level indicated on the container.

### WARNING:

***If the mix is particularly liquid, do not exceed the 1.25 l level indicated on the goblet.***

Position the lid (B) on the goblet by pressing it slightly until it fits in place completely (Fig. 2).

- Close the upper hole of the lid (B) by inserting the apposite cap (A) and rotating it clockwise (Fig. 3).
- Mount the goblet (D) on the motor unit (F) properly (Fig. 4).
- Plug power cord into a socket.
- Start the appliance by turning the operation dial (G) clockwise up to the required speed to start the blades.

By rotating the operation dial (G) counter-clockwise, the PULSE function is enabled.

If the appliance should fail to start, make sure that the goblet is correctly fitted. The appliance is fitted with a device to prevent it from operating if the goblet is not fitted or if it has been fitted incorrectly.

- To stop the appliance, turn the on dial (G) back to «0».
- During use, it is possible to add foods into the goblet, by lifting out the filler cap (A) after having switched off the appliance.
- It may be necessary to switch the appliance off several times in order to remove food residues from the goblet sides. In this case, switch the appliance off and unplug it.
- Take the lid (B) out and use the appropriate spatula to remove any remaining food inside the goblet.

### WARNING:

***The blender has a max capacity of 1.25 L for liquids and it is advisable not to exceed this limit. If it is used for solid food, the maximum capacity is 1.5 L.***

***Place the foods for blending in the container and fit it to the power base before plugging the appliance into the mains power.***

***Never remove the lid (B) during use.***

***Always remove the blender lid cap (A) before blending warm liquids preventing the liquid from splashing out of the goblet. Never pour hot liquids into the blender.***

***Do not operate the appliance for more than 1 minute. The best use is with short pulses for few seconds.***

***When using the apposite spatula to remove any residues from the goblet sides, keep it well away from the blade set to prevent any damage.***

## **BLENDER DISASSEMBLY**

- Unplug the appliance from the mains outlet and wait for the blades to come to a complete halt before removing the goblet (D) from the base.
- Lift the goblet (D), remove the lid (B)..
- Pour the smoothy into a glass.

## **USE OF MULTIMILL (IF AVAILABLE)**

***Multimill blade unit (Fig. 6)***

- Insert the ingredients into the container (H).

**note:** Fill the container (H) with fresh ingredients till MAX level (meat 75 g, cut into 2.5 x 2.5 cm cubes).

Don't introduce any liquid.

- Close by rotating the multimill blade (I) on the container (H) clockwise (Fig. 7).
- Position the assembled grinder, tightly closed, onto the motor unit (F) and rotate it clockwise until it locks (Fig. 8).
- Plug the appliance in and, through the operating dial (G), select the pulse functioning for 2-3 times for a first grinding. Choose then "1" or "2" as operating speed for fresh ingredients.
- For meat: Start with speed 3 for 2 second, and speed 4 for 3 second (max working time 5 sec).
- To remove the blade from container, rotate it counterclockwise and extract it

## **CLEANING**

Do not disassemble the appliance or try to intervene in any way inside it. Keep the appliance properly clean and tidy to ensure an optimal quality of prepared food and a longer life of the machine itself.

- The goblet (d), lid (B), measuring cup (A) and multimill container (H) can be washed in the top rack of the dishwasher.
- Use a slightly damp cloth to clean the motor unit.  
Never clean with potentially abrasive products.

## **WARNING:**

***Never place the appliance body, plug or power cord in water or other liquids; always wipe clean with a damp cloth.***

***Always switch off the product unplug the power cord from the electricity mains before fitting or removing single attachments or before cleaning the appliance.***

***Particular care must be taken when cleaning the blade because it is extremely sharp.***



***Ariete***

De' Longhi Appliances Srl  
Divisione Commerciale Ariete  
Via San Quirico, 300  
50013 Campi Bisenzio FI - Italy  
E-Mail: [info@ariete.net](mailto:info@ariete.net)  
Internet: [www.ariete.net](http://www.ariete.net)