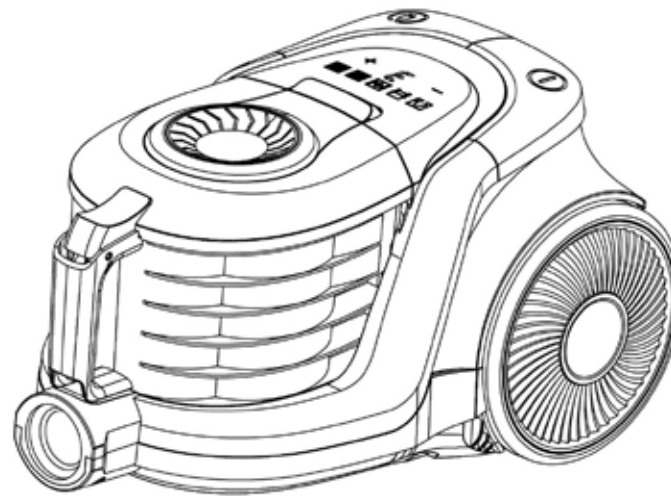


## TYPE VBP75

instructions

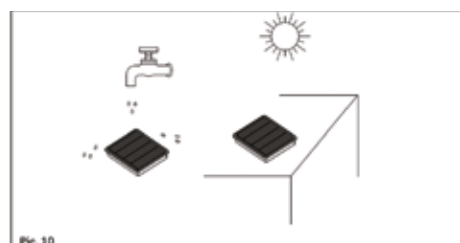
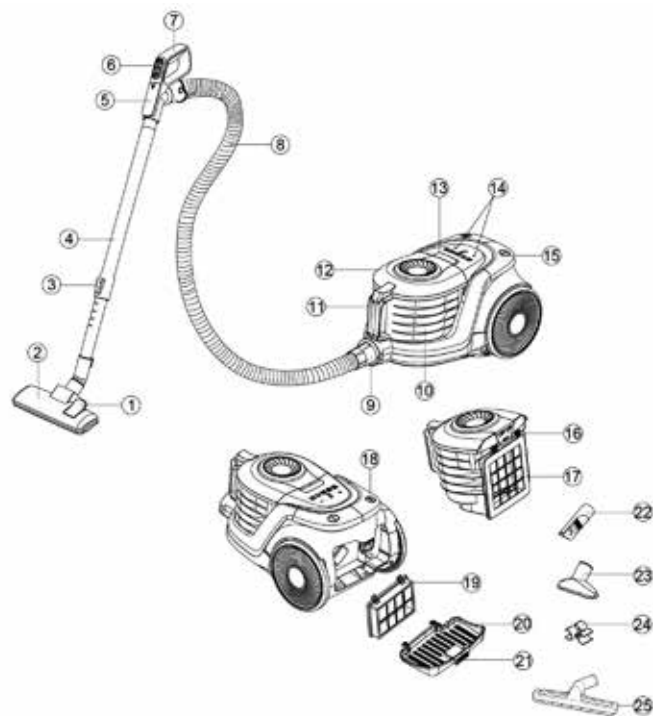
Cod. 5235102900 Rev. 0 - 27/03/2025



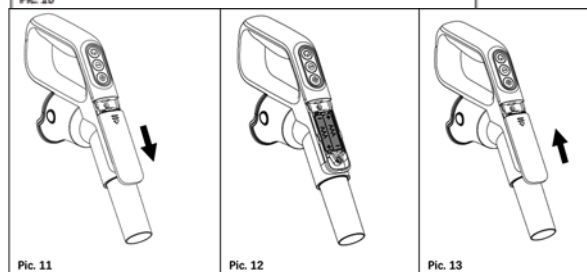
### Kenwood Ltd

New Lane  
Havant  
Hampshire  
PO9 2NH  
[kenwoodworld.com](http://kenwoodworld.com)





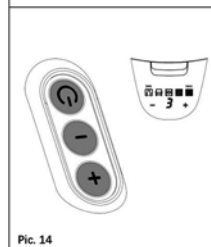
Pic. 10



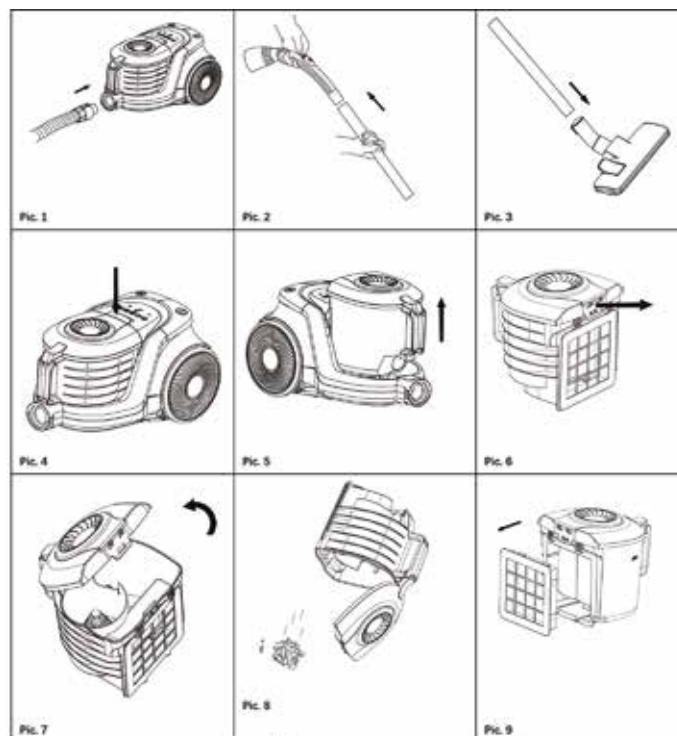
Pic. 11

Pic. 12

Pic. 13



Pic. 14



Pic. 1

Pic. 2

Pic. 3

Pic. 4

Pic. 5

Pic. 6

Pic. 7

Pic. 8

Pic. 9

## safety

- Read these instructions carefully and retain for future reference.
- Remove all packaging and any labels.
- If the cord is damaged it must, for safety reasons, be replaced by KENWOOD or an authorised KENWOOD repairer.
- Before connecting the unit to the mains, make sure that the voltage specified on the unit corresponds to your home mains voltage.
- This appliance can be used by children aged from 8 years and above and persons with reduced physical, sensory or mental capabilities or lack of experience and knowledge if they have been given supervision or instruction concerning use of the appliance in a safe way and understand the hazards involved. Children shall not play with the appliance. Cleaning and user maintenance shall not be made by children without supervision.
- If the supply cord is damaged, it must be replaced by the manufacturer, its service agent or similarly qualified persons in order to avoid a hazard.
- Non-rechargeable batteries are not to be recharged. Different types of batteries or new and used batteries are not to be mixed. Batteries are to be inserted with the correct polarity.
- Exhausted batteries are to be removed from the appliance and safely disposed of;
- If the appliance is to be stored unused for a long period, the batteries should be removed. The supply terminals are not to be short-circuited.

- Do not leave the vacuum cleaner unattended when it is plugged into the electrical outlet. Always unplug the vacuum cleaner from the mains if it is not being used, before changing attachments or before unit maintenance.
- To prevent the risk of electric shock, do not use the vacuum cleaner outdoors, do not use it for collecting water or any other liquids (do not use the vacuum cleaner on wet surfaces).
- Carry the vacuum cleaner holding it by the carrying handle only.
- Do not use the power cord for carrying the vacuum cleaner, do not close the door if the power cord runs through the doorway, do not let the power cord come in contact with sharp corners or edges of furniture, and with hot surfaces. Do not run over the power cord with the vacuum cleaner while room cleaning as this can damage it.
- Always first switch the vacuum cleaner off with the ON/OFF button and only after that take the power plug out of the mains socket.
- When unplugging the unit, pull the plug but not cord
- Do not touch the power plug or the body of the vacuum cleaner with wet hands.
- When winding the power cord, hold it down with your hand to ensure that the plug does not strike the floor surface.
- Do not cover the unit outlet with any objects.
- Do not switch the unit on if any of its openings are blocked
- Keep hair, free hanging clothes, fingers and other parts of your body away from the vac-

uum cleaner air inlets.

- Be especially cautious while cleaning the stair landings.
- Do not use the vacuum cleaner for collecting such highly inflammable liquids as gasoline and solvents, do not use the vacuum cleaner in places where such liquids are stored.
- Do not use the vacuum cleaner for collecting water and other liquids, burning or smoking cigarettes, matches, cinders as well as fine dust, for example, of plaster, concrete, flour or ashes.
- Do not use the vacuum cleaner if the inlet and outlet filters are not installed.
- Do not immerse the unit body into water or other liquids.
- Use only the accessories and attachments supplied.
- Clean the vacuum cleaner regularly.
- Keep the vacuum cleaner in a dry cool place.
- Do not use the vacuum cleaner to clean pets.
- Close supervision is necessary when children or disabled persons are near the operating unit.
- This unit is not intended for usage by children. During the unit operation and breaks between operation cycles, place the unit out of reach of children.
- The unit is not intended to be used by people with physical, sensory or mental disabilities (including children) or by persons lacking experience or knowledge if they are not under supervision of a person who is responsible for their safety or if they are not instructed by this person on the usage of the unit.

- Do not leave children unattended to avoid them using the unit as a toy.
- For children safety reasons do not leave polyethylene bags, used as packaging, unattended.
- Attention! Do not allow children to play with polyethylene bags or packaging film. Danger of suffocation!
- Regularly check the power plug and power cord integrity for damages.
- If the power cord is damaged, it should be replaced by the manufacturer, a maintenance service or similar qualified personnel to avoid danger
- Do not attempt to repair the unit. Do not disassemble the unit by yourself.
- Transport the unit in the original package only.
- Keep the unit out of reach of children and disabled persons.
- The unit is intended for household use only. Its commercial usage and usage in production areas and work spaces is prohibited.

## key

1. «FLOOR/CARPET» mode switch
2. Floor/carpet brush
3. Telescopic pipe clamp
4. Telescopic extension pipe
5. Battery cover
6. Remote control buttons
7. Remote control hose handle
8. Flexible hose
9. Flexible hose ending with clamps
10. Dust bin
11. Dust bin handle
12. Dust bin lid
13. Dust bin release button
14. Suction power control buttons  
«+/-»
15. On/off button
16. Dust bin lid lock
17. Inlet filter
18. Power cord winding button
19. Outlet HEPA filter
20. Outlet HEPA filter grid
21. Grid clamp
22. 2 in 1 crevice nozzle
23. Furniture brush
24. Attachment holder
25. Parquet brush

## vacuum cleaner assembly

### **WARNING:**

**After unit transportation or storage at low temperature keep it for at least three hours at room temperature before switching on.**

- Unpack the unit completely and remove advertising stickers that can prevent the unit operation.
- Check the unit for damages; do not use it in case of damages.
- Before switching the unit on, make sure that your home mains voltage corresponds to the unit operating voltage.
- The unit is intended for operation with AC system and 50 or 60 Hz frequency. The unit does not need any additional settings for operating with the required nominal frequency.

**Note:** before changing the attachment or replacing the dust bin (10) switch the vacuum cleaner off and unplug it.

### **Replacing AAA type batteries**

- Remove the battery compartment cover located on the handle (pic 11).
- Insert the new batteries correctly, respecting the polarity sign (pic 12).
- Close the battery cover.

### **Attaching and removing the flexible hose**

- Insert the flexible hose ending into the air inlet.
- Keep pushing the hose through, applying limited force, until the locks trigger (pic. 1).
- If you need to remove the flexible hose, press the locks and detach the flexible hose ending.

### **Attaching the telescopic pipe and the attachments**

- Attach the telescopic extension pipe to the flexible hose handle (pic. 2).
- Extend the lower part of the telescopic extension pipe to the required length, having preliminarily pressed the lock.
- Choose the necessary attachment - the floor/carpet brush or the crevice nozzle 2 in 1, the furniture brush and attach it to the telescopic extension pipe (pic. 3).


**Note:** the attachment (22 or 23) can be attached directly to the flexible hose handle.

## attachments

### **Floor/carpet brush (2)**

- Ideal for cleaning large areas as well as corners that are difficult to reach.
- We advise against using the brush to clean carpets and resistant floors. The brush has wheels to allow it to glide over all surfaces. Select the required projection for the bristles by pressing the lever at the end of the brush. To retract the bristles,

press the lever marked with the  carpet symbol.

- For better preservation and protection of smooth flooring such as PVC, parquet or tiles, it is better to use the brush. To lower the bristles, press the lever marked with the  smooth flooring symbol.

### Parquet brush (26)

It can be used to clean delicate surfaces.

### 2 in 1 Crevice nozzle (23)

This attachment can be used either as a dusting brush or as a crevice nozzle. To switch between the two, adjust the brush to the desired position.

### Furniture brush (24)

Use this attachment to clean the furniture upholstery.

### Attachment holder (25)

Install the holder on the telescopic pipe (4) and install the attachments (23) and (24) on it.

### Dust bin (10)

The delivery set includes a plastic dust bin. As the dust bin is filled up, clean it off dust and garbage.

## using the appliance

### CAUTION:

**Do not use the vacuum cleaner near hot surfaces, such as ash-trays and in places where inflammable liquids are stored.**


**Take sharp objects away from the floor before cleaning to prevent unit damage.**


**If the suction power of the vacuum cleaner decreases rapidly while cleaning, switch it off immediately and check the telescopic pipe or the flexible hose for obstruction. Switch the vacuum cleaner off, unplug it, remove the obstruction and only after that you can continue cleaning.**

### CAUTION:

**Always switch the vacuum cleaner on only with the dust bin and the filters installed. Always check that the filters are installed properly.**

- Before using the unit, unwind the power cord to the required length and insert the power plug into the mains socket. The yellow mark on the power cord indicates the maximum cord length. Do not unwind the power cord further than the red mark.
- Press the ON/OFF button to switch the vacuum cleaner on.
- During the operation you can control the suction power by pressing the suction power control buttons «+/-» on the remote control handle or control panel on the appliance body. When you press the buttons «+/-», the recommended cleaning surface indicators will light up.
- Remote control:  
To switch on the device press the

foot pedal button  with your foot. Then the indicator will be on. To begin the cleaning, press the

button  on the handle, Press the button "+" or "-" to regulate the suction power (pic. 14).

- After room cleaning switch the vacuum cleaner off by pressing the ON/OFF button and unplug the unit.
- To wind the power cord, press the power cord winding button, hold the winding cord with your hand to avoid its whipping and damage.
- Carry the vacuum cleaner by the handle.

# cleaning and maintenance

- If the dust bin fills up during the vacuum cleaner operation, it must be cleaned of accumulated garbage. Switch the vacuum cleaner off by pressing the on/off button . Take the handle, press the release button and remove the dust bin (pic. 4, 5).
- Slightly pull the lid and move it from the engagement with the lock (pic. 6).
- Open the lid (pic. 7), remove the dust and garbage from the dust bin (pic. 8).
- Close the lid and make sure that it is fixed with the lock, install the dust bin back to its place and make sure that it is fixed with the lock.

## Cleaning the filters

Provide that the inlet filter and the outlet HEPA filter are always clean, because the overall performance of the vacuum cleaner depends on it; clean the filters no less than 3-4 times a year, and more often at severe obstruction.

## Cleaning the inlet filter

- Turn off the vacuum cleaner and unplug it from the mains.
- Remove the container by pressing the lock button (pic. 4, 5).
- Remove the inlet filter (pic. 9). Clean the filter from dust and wash it under a slightly warm water jet. Do not wash the filter in a dishwashing machine.
- Dry the filter. Do not dry the filter with a hairdryer.
- Install the inlet filter back to its place.

**Note:** before installing the inlet filter make sure that it is clean and dry.

## Cleaning the outlet HEPA filter

- Turn off the vacuum cleaner and unplug it from the mains.
- Press on the grid lock and remove it. Remove the HEPA filter. Wash the HEPA filter under slightly warm water jet (pic. 10). Do not wash the HEPA filter in a dishwashing machine.
- Dry the HEPA filter (pic. 10). Do not dry the HEPA filter with a hairdryer.
- Install the HEPA filter back to its place. Install the grid back to its place until the lock clicking.

**Note:** before installing the HEPA filter make sure that it is clean and dry.

## Vacuum cleaner body

- Wipe the vacuum cleaner body with a soft, slightly damp cloth and then wipe it dry.
- Do not immerse the body of the vacuum cleaner, the power cord and the power plug of the unit into water or other liquids. Provide that no liquid gets inside the vacuum cleaner body.
- Do not use any solvents or abrasives for cleaning the vacuum cleaner body and the accessories.

## Storage

- Before taking the vacuum cleaner away for long term storage, clean its body, the dust bin and the filters . You can store the vacuum cleaner both in vertical and horizontal position.
- For easy storing use the vertical brush storage.
- Keep the unit out of reach of children and disabled persons.

## service and customer care

- If you experience any problems with the operation of your appliance, before requesting assistance visit [www.kenwoodworld.com](http://www.kenwoodworld.com).
- Please note that your product is covered by a warranty, which complies with all legal provisions concerning any existing warranty and consumer rights in the country where the product was purchased.
- If your Kenwood product malfunctions or you find any defects, please send it or bring it to an authorised KENWOOD Service Centre. To find up to date details of your nearest authorised KENWOOD Service centre visit [www.kenwoodworld.com](http://www.kenwoodworld.com) or the website specific to your Country.
- Made in China.



### **IMPORTANT INFORMATION FOR CORRECT DISPOSAL OF THE PRODUCT IN ACCORDANCE WITH THE EUROPEAN DIRECTIVE ON WASTE ELECTRICAL AND ELECTRONIC EQUIPMENT (WEEE)**

At the end of its working life, the product must not be disposed of as urban waste.

It must be taken to a special local authority differentiated waste collection centre or to a dealer providing this service.

Disposing of a household appliance separately avoids possible negative consequences for the environment and health deriving from inappropriate disposal and enables the constituent materials to be recovered to obtain significant savings in energy and resources. As a reminder of the need to dispose of household appliances separately, the product is marked with a crossed-out wheeled dustbin.