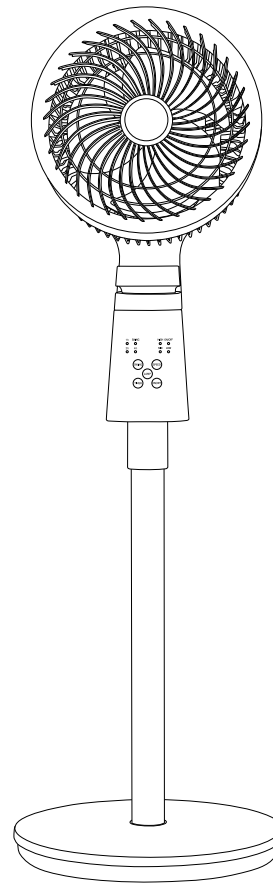


## Type IFP25

instructions

Cod. 3055102100 Rev. 0 - 29/05/2025



### Kenwood Ltd

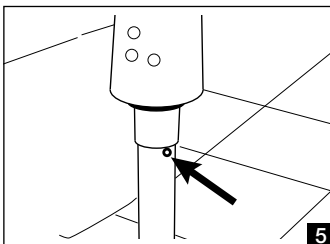
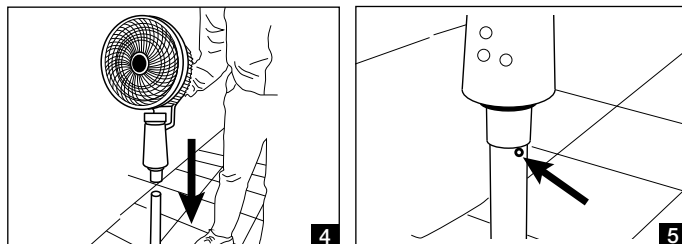
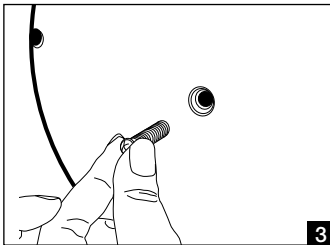
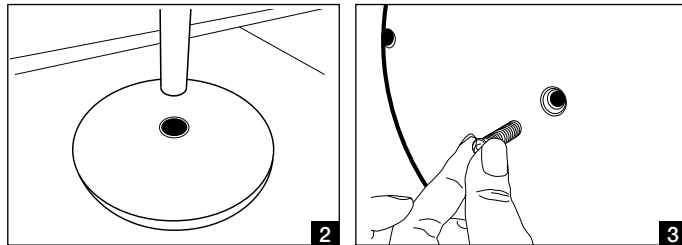
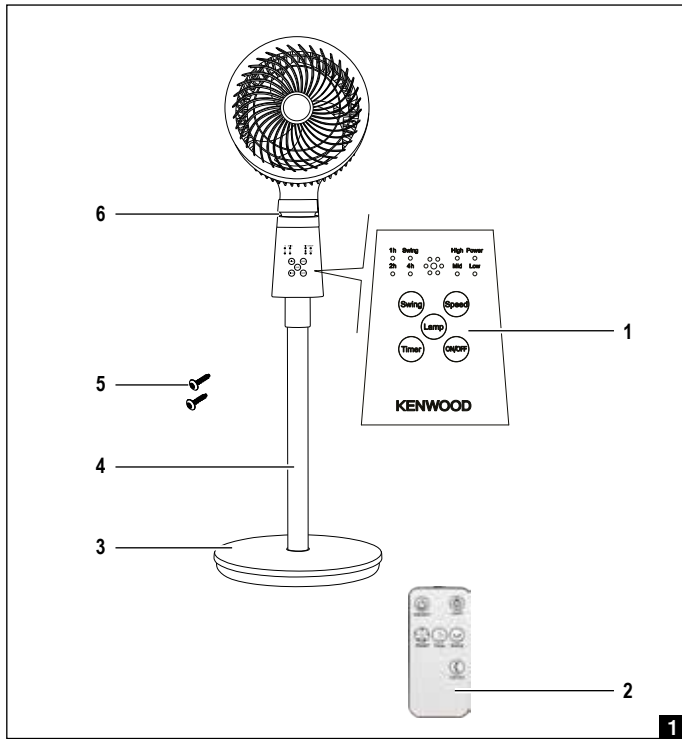
New Lane  
Havant  
Hampshire  
PO9 2NH  
[kenwoodworld.com](http://kenwoodworld.com)



## English

### safety

- Read these instructions carefully and retain for future reference.
- Remove all packaging and any labels.
- If the plug or cord is damaged it must, for safety reasons, be replaced by KENWOOD or an authorised KENWOOD repairer in order to avoid a hazard.
- Make sure that the voltage on the appliance rating plate corresponds to that of the mains electricity.
- Never leave the appliance unattended when connected to the power supply; unplug it after every use.
- Never place the appliance on or close to sources of heat.
- Always place the appliance on a flat, level surface during use.
- Never leave the appliance exposed to the elements (rain, sun, etc....).
- Make sure that the power cord does not come into contact with hot surfaces.
- This appliance must not be used by people (including children) with reduced physical or mental capabilities or by people without the relevant experience or knowledge of the appliance, unless they are carefully supervised or properly trained in its use by a person responsible for their safety.
- Make sure that children cannot play with the appliance.
- Never place the appliance body, plug or power cord in water or other liquids; always wipe clean with a damp cloth.



- Always unplug the power cord from the electricity mains before fitting or removing single attachments or before cleaning the appliance.
- Always make sure that your hands are thoroughly dry before using or adjusting the switches on the appliance, or before touching the power plug or power connections.
- When air cooler is working, absolutely forbid hand or foreign body inserting the network ( specially pay attention to children)
- To unplug the appliance, grip the plug and remove it directly from the power socket. Never pull the power cord to unplug the appliance.
- Do not use the appliance if the power cord or plug are damaged or if the appliance itself is faulty; all repairs, including substitution of power cord, must be carried out exclusively by an assistance centre or by authorized technicians in order to avoid all risks.
- In case of using extension leads, these must be suitable for the appliance power to avoid danger to the operator and for the safety of the environment in which the appliance is being used. Extension leads, if not suitable, can cause operating anomalies.
- Never allow the cord to dangle in places where it may be grabbed by a child.
- Do not threaten the safety of the appliance by using parts that are not original or which have not been approved by the manufacturer.
- This appliance is designed for HOME USE ONLY and may not be used for commercial or industrial purposes.
- Any changes to this product that have not been

expressly authorised by the manufacturer may lead to the user's guarantee being rendered null and void.

- In the event that you decide to dispose of the appliance, we advise you to make it inoperative by cutting off the power cord. We also recommend that any parts that could be dangerous be rendered harmless, especially for children, who may play with the appliance or its parts.
- Packaging must never be left within the reach of children since it is potentially dangerous.
- Never immerse the appliance in liquids or spray it, do not use it in proximity of windows or other places exposed to rain to prevent the risk of electric shock.
- Do not start the appliance close to combustible or flammable materials or in proximity of emissions.
- Keep the appliance away from curtains, drapes, or other light objects that might be sucked in.
- Never put fingers or other objects into the grid, especially when the appliance is running.

## key

1. Control panel
2. Remote control
3. Base
4. Support rod
5. Fixing screws (nr. 2)
6. Appliance body with fan

## assembly

- Insert the support rod into the base (Fig. 2) and lock it by tightening the fixing screw (Fig. 3).
- Insert the appliance body onto the support rod (Fig. 4) and lock it by tightening the fixing screw (Fig. 5)

### ATTENTION:

**Please keep the fan switch in OFF status when not in use.**

## how to operate

- After plug the power cord, the buzzer responds a sound and the red light will be on the control panel.
- **ON/OFF:** Press the "ON/OFF" button on the control panel or press the ON/OFF button on the remote control to turn the unit on. The unit will start at low speed, the blue light will be on the control panel. To switch back to the standby position, simply press the ON/OFF button on control panel or press the ON/OFF button on the remote control.
- **Speed:** Wind speed can be adjusted to 3 levels as low-mid-high by pressing the 'Speed' button.
- **Timer:** Press 'Timer' button to set the fan running time between 1-7 hours.
- **Swing:** Press 'Swing' button to change the wind direction. Press once to turn on the left and right, press twice to turn on the up and down, and press third to turn on the up and down left and right. Press for the fourth time and swing to stop.
- **Lamp:** Press 'Lamp' button to turn on the blue light.

## care and cleaning

- Clean the outside of the appliance using a clean, damp cloth.
- Do not use solvents, abrasive cleaners, metal brushes or other cutting objects for cleaning.
- The cooling blades on the motor unit must be always free from dust. Remove dust with a vacuum cleaner, if necessary.

### ATTENTION:

**Wait until the blades are completely stopped before proceeding with cleaning**

**Don't wipe it with acid detergents, lamp oil, alcohol or cloth impregnated with chemicals to prevent any change in colour or damages.**

**Always unplug the fan before cleaning or disassembling.**

## service and customer care

- If the cord is damaged it must, for safety reasons, be replaced by KENWOOD or an authorized KENWOOD repairer.
- If you experience any problems with the operation of your appliance, before requesting assistance refer to the "troubleshooting guide" section in the manual or visit [www.kenwoodworld.com](http://www.kenwoodworld.com).
- Please note that your product is covered by a warranty, which complies with all legal provisions concerning any existing warranty and consumer rights in the country where the product was purchased.
- If your Kenwood product malfunctions or you find any defects, please send it or bring it to an authorised KENWOOD Service Centre. To find up to date details of your nearest authorized KENWOOD Service centre visit [www.kenwoodworld.com](http://www.kenwoodworld.com) or the website specific to your Country.



**IMPORTANT INFORMATION FOR  
CORRECT DISPOSAL OF THE  
PRODUCT IN ACCORDANCE  
WITH THE EUROPEAN  
DIRECTIVE ON WASTE  
ELECTRICAL AND ELECTRONIC  
EQUIPMENT (WEEE)**

At the end of its working life, the product must not be disposed of as urban waste. It must be taken to a special local authority differentiated waste collection centre or to a dealer providing this service. Disposing of a household appliance separately avoids possible negative consequences for the environment and health deriving from inappropriate disposal and enables the constituent materials to be recovered to obtain significant savings in energy and resources. As a reminder of the need to dispose of household appliances separately, the product is marked with a crossed-out wheeled dustbin.