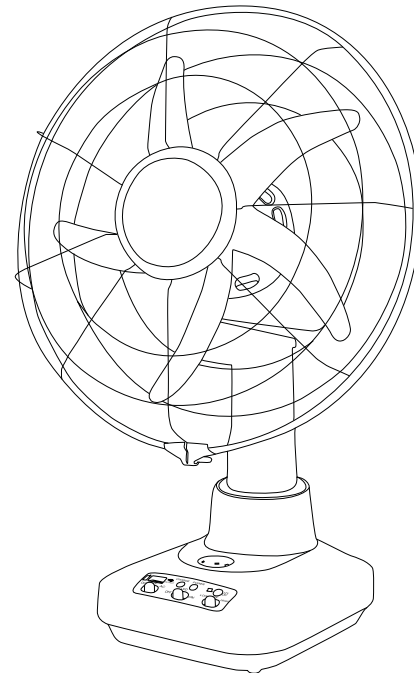


## Type IFP90

instructions

Cod. 3055101800 Rev. 0 - 29/02/2024



**Kenwood Ltd**

New Lane  
Havant  
Hampshire  
PO9 2NH  
[kenwoodworld.com](http://kenwoodworld.com)



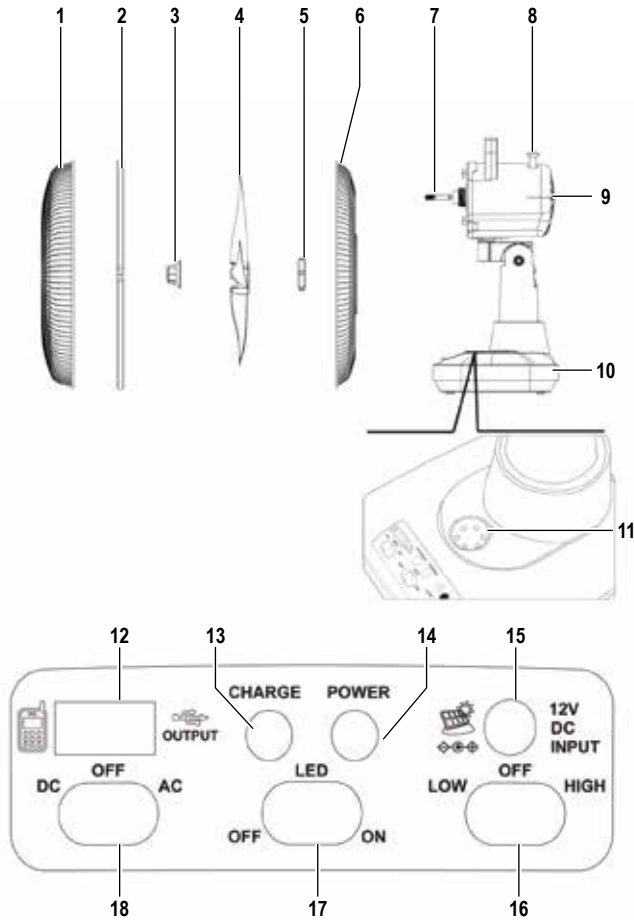
© Copyright 2024 Kenwood Limited. All rights reserved



## English

### safety

- Read these instructions carefully and retain for future reference.
- Remove all packaging and any labels.
- If the plug or cord is damaged it must, for safety reasons, be replaced by KENWOOD or an authorised KENWOOD repairer in order to avoid a hazard.
- Make sure that the voltage on the appliance rating plate corresponds to that of the mains electricity.
- Never leave the appliance unattended when connected to the power supply; unplug it after every use.
- Never place the appliance on or close to sources of heat.
- Always place the appliance on a flat, level surface during use.
- Never leave the appliance exposed to the elements (rain, sun, etc....).
- Make sure that the power cord does not come into contact with hot surfaces.
- This appliance must not be used by people (including children) with reduced physical or mental capabilities or by people without the relevant experience or knowledge of the appliance, unless they are carefully supervised or properly trained in its use by a person responsible for their safety.
- Make sure that children cannot play with the appliance.
- Never place the appliance body, plug or power cord in water or other liquids; always wipe clean with a damp cloth.



- Always unplug the power cord from the electricity mains before fitting or removing single attachments or before cleaning the appliance.
- Always make sure that your hands are thoroughly dry before using or adjusting the switches on the appliance, or before touching the power plug or power connections.
- To unplug the appliance, grip the plug and remove it directly from the power socket. Never pull the power cord to unplug the appliance.
- Do not use the appliance if the power cord or plug are damaged or if the appliance itself is faulty; all repairs, including substitution of power cord, must be carried out exclusively by an assistance centre or by authorized technicians in order to avoid all risks.
- In case of using extension leads, these must be suitable for the appliance power to avoid danger to the operator and for the safety of the environment in which the appliance is being used. Extension leads, if not suitable, can cause operating anomalies.
- Never allow the cord to dangle in places where it may be grabbed by a child.
- Do not threaten the safety of the appliance by using parts that are not original or which have not been approved by the manufacturer.
- This appliance is designed for HOME USE ONLY and may not be used for commercial or industrial purposes.
- Any changes to this product that have not been expressly authorised by the manufacturer may lead to the user's guarantee being rendered null and void.

- In the event that you decide to dispose of the appliance, we advise you to make it inoperative by cutting off the power cord. We also recommend that any parts that could be dangerous be rendered harmless, especially for children, who may play with the appliance or its parts.
- Packaging must never be left within the reach of children since it is potentially dangerous.
- Never immerse the appliance in liquids or spray it, do not use it in proximity of windows or other places exposed to rain to prevent the risk of electric shock.
- Do not start the appliance close to combustible or flammable materials or in proximity of emissions.
- Keep the appliance away from curtains, drapes, or other light objects that might be sucked in.
- Never put fingers or other objects into the grid, especially when the appliance is running.
- Do not start the fan using a timer or other control devices, to prevent the risk of fire or electrocution.
- This appliance is not intended to be operated by means of an external timer or separate remote-control system.

## key

1. Front guard
2. Guard ring
3. Spinner
4. Blade
5. Rear guard lock
6. Back guard
7. Motor shaft
8. Oscillating control knob
9. Gear box
10. AC Socket
11. Nightlight led

## description of commands

12. 5V USB Output
13. Red led charging indicator
14. Green led operating indicator
15. 12V DC input socket
16. Fan switch (High/Low)
17. Led ON/OFF
18. AC/DC Switch

## assembly

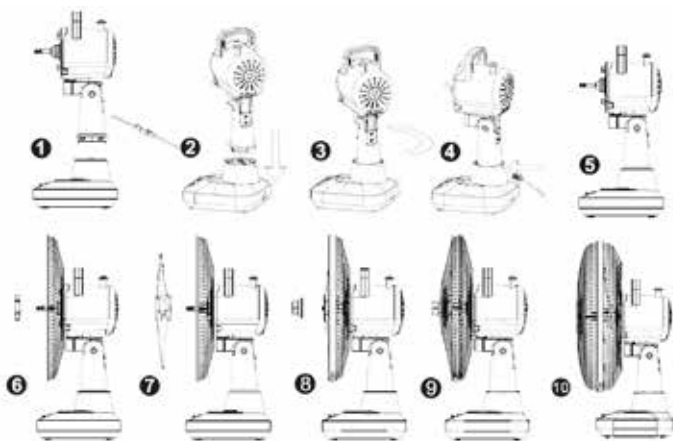
- Connect the terminals of the fan body and fan base.
- Install the body onto the base
- Use a crew driver to twist the specified screw in the base hole.
- Locate the back guard in the correct position. Tighten the rear guard lock to secure the back guard.
- Slide the fan blade onto the motor shaft until it reaches and aligns with the retaining pin.
- Screw the spinner to secure fan blade onto the motor shaft in a counter clockwise direction.
- Fix both grills together with the guard ring and then tighten the locking screw. Ensure all fixing are safe and secure before opening fan.

### ATTENTION:

**Charge the unit at least 24 hours for ever 3 months when unit is not being used.**

**Always charge the unit after use.**

**Turn off the unit when not in use.**



## how to operate

- For fan speed, place the speed selector to the far right for high and to the far left for low.
- Switch the led "ON" or "OFF" to control the nightlight.
- DC 12V input is optional for solar or car charging.
- Select AC for the AC power to

operate as an ordinary fan and DC to use battery.

- Push down the oscillating control knob to start oscillating and pull up the oscillating control knob to stop.

## charging the battery

- Plug the cord to power source.
- Light indicator turns red when charging.
- Maximum charging time is approximately 24 hours.

Working time:

High - 3 hours

Low - 5 hours

Led - 35 hours

## care and cleaning

- Clean the outside of the appliance using a clean, damp cloth.
- Do not use solvents, abrasive cleaners, metal brushes or other cutting objects for cleaning.
- The cooling blades on the motor unit must be always free from dust. Remove dust with a vacuum cleaner, if necessary.

### ATTENTION:

**Wait until the blades are completely stopped before proceeding with cleaning**

**Don't wipe it with acid detergents, lamp oil, alcohol or cloth impregnated with chemicals to prevent any change in colour or damages.**

**Always unplug the fan before cleaning or disassembling.**

## service and customer care

- If the cord is damaged it must, for safety reasons, be replaced by KENWOOD or an authorized KENWOOD repairer.
- If you experience any problems with the operation of your appliance, before requesting assistance refer to the "troubleshooting guide" section in the manual or visit [www.kenwoodworld.com](http://www.kenwoodworld.com).
- Please note that your product is covered by a warranty, which complies with all legal provisions concerning any existing warranty and consumer rights in the country where the product was purchased.

- If your Kenwood product malfunctions or you find any defects, please send it or bring it to an authorised KENWOOD Service Centre. To find up to date details of your nearest authorized KENWOOD Service centre visit [www.kenwoodworld.com](http://www.kenwoodworld.com) or the website specific to your Country.

- Made in China.



### **IMPORTANT INFORMATION FOR CORRECT DISPOSAL OF THE PRODUCT IN ACCORDANCE WITH THE EUROPEAN DIRECTIVE ON WASTE ELECTRICAL AND ELECTRONIC EQUIPMENT (WEEE)**

At the end of its working life, the product must not be disposed of as urban waste. It must be taken to a special local authority differentiated waste collection centre or to a dealer providing this service. Disposing of a household appliance separately avoids possible negative consequences for the environment and health deriving from inappropriate disposal and enables the constituent materials to be recovered to obtain significant savings in energy and resources. As a reminder of the need to dispose of household appliances separately, the product is marked with a crossed-out wheeled dustbin.