

KENWOOD

SJM020A series

instructions
說明書

English 2 - 5

繁體中文 6 - 10



總代理：  各界貿易有限公司
Great Jungle Trading Co., Ltd.

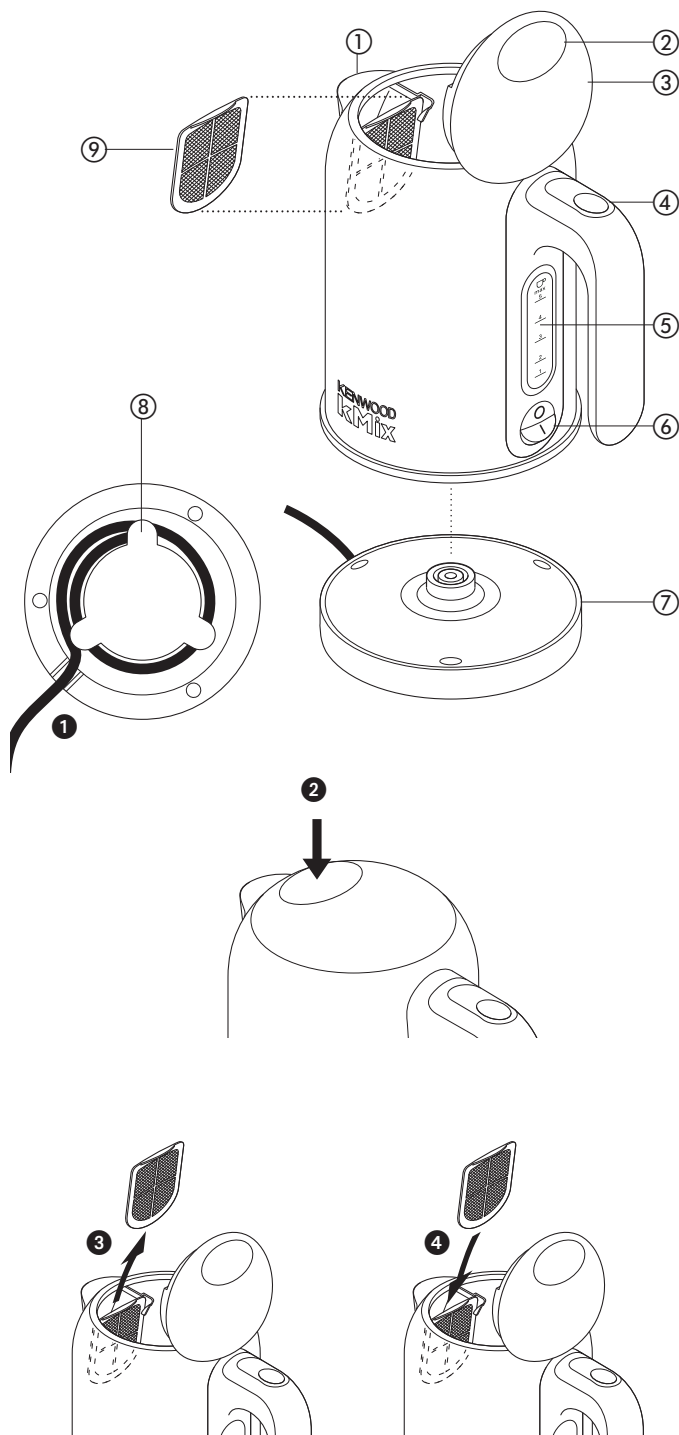
台北市內湖區行愛路172號1樓 Tel:(02)2793-3939
1F., No.172, Xingai Rd., Neihu District, Taipei City, Taiwan R.O.C.
Email: info2009@sgj.com.tw www.kenwoodworld.com

KENWOOD
CREATE MORE

English/繁體中文

key

- | | | |
|----------------|--------------------------------------|------------------|
| ① spout | ④ lid release button | ⑦ 360° powerbase |
| ② finger pad | ⑤ water level gauge | ⑧ cord wrap |
| ③ flip top lid | ⑥ on/off switch with indicator light | ⑨ filter |
| ① 壺嘴 | ④ 上蓋開啟鈕 | ⑦ 電源底座 |
| ② 上蓋壓墊 | ⑤ 水位視窗 | ⑧ 電源線收納座 |
| ③ 水壺上蓋 | ⑥ 加熱開關 (含指示燈) | ⑨ 壺嘴濾網 |



before using your Kenwood appliance

- Read these instructions carefully and retain for future reference.
- Remove all packaging and any labels.

safety

- Always use the filter and never overfill - boiling water may splash out.
- Avoid contact with steam coming out of the spout area when pouring and out of the lid or spout area when refilling.
- Beware: the metal body of the kettle will get hot during operation.
- Never let the cord hang down where a child could grab it.
- **Always unplug your kettle when not in use.**
- Never put the kettle, powerbase, cord or plug in liquid.
- Never use a damaged appliance. Get it checked or repaired: see 'service and customer care'.
- **Caution:** Do not operate the kettle on an inclined surface.
- Only use the powerbase supplied and keep it clean and dry.
- Make sure the lid is secure before switching the kettle on.
- **Warning:** Do not open the lid while the water is boiling.
- Take care when opening the lid - droplets of hot water may be ejected.
- Make sure the kettle is switched off before lifting or pouring.
- Remove the kettle from the base before filling or pouring.
- Never put the kettle near or on cooker hot plates or gas burners.
- This kettle is for boiling water only.

- This appliance is not intended for use by persons (including children) with reduced physical, sensory or mental capabilities, or lack of experience and knowledge, unless they have been given supervision or instruction concerning use of the appliance by a person responsible for their safety.
- Children should be supervised to ensure that they do not play with the appliance.
- Only use the appliance for its intended domestic use. Kenwood will not accept any liability if the appliance is subject to improper use, or failure to comply with these instructions.

before plugging in

- Make sure your electricity supply is the same as the one shown on the underside of your kettle.
- This appliance conforms to EC directive 2004/108/EC on Electromagnetic Compatibility and EC regulation no. 1935/2004 of 27/10/2004 on materials intended for contact with food.

before using for the first time

- 1 Wrap any excess cord around the bracket on the underside of the powerbase ❶.
- 2 Fill to 'MAX', boil, then pour the water away. Repeat 2 to 3 times.

to use your kettle

- 1 Fill the kettle through either the spout or lid. The water level must be between 'MAX' and 'MIN'.
- Be economical: do not boil more water than you need.
- To improve the quality of your drinks always use fresh water.
- Empty the kettle after each use.
- 2 Check the lid is closed. Close the lid by pushing down on the finger pad area ❷.
- 3 Plug in and switch on.
- 4 Your kettle will boil and switch off automatically. To re-boil, wait a few seconds - the on/off switch needs time to reset.
- **If you experience problems with your kettle switching on and off during use or switching off before boiling, check that the flat element is free from scale - see "descaling".**
- Your kettle is fitted with a filter to hold back limescale particles.
- If you find drops of water under your kettle, don't worry - it is just condensation.

boil-dry protection

- If you switch on with too little water, your kettle will cut out automatically. Switch off, remove from the powerbase and let it cool down before re-filling. When it has cooled down, the switch will reset itself.

care and cleaning

- Before cleaning, unplug your kettle and let it cool down.

the outside and powerbase

- Wipe with a damp cloth, then dry. Do not use abrasives - they will scratch the metal and plastic surfaces.

the inside

- Even though your kettle comes with a filter, you still need to clean the inside (and the filter) regularly.

the filter

- 1 Open the lid.
- 2 Slide the filter out ❸.
- 3 **either** rinse under the tap or use a soft brush.
or when descaling your kettle, drop the filter in too. Rinse thoroughly.
- 4 Slide the filter back in to refit ❹.

descaling

- Regular descaling of the flat element will improve the performance of your kettle. If the kettle is not descaled regularly the build up of limescale may result in the following:
 - problems may be experienced with the kettle switching on and off during use or switching off before boiling.
 - the kettle may take longer to boil.
 - the flat element may be damaged.

Please note: Failure to descale your kettle may invalidate your guarantee.

- When limescale starts to build up on the heating element, buy a suitable descaler and descale your kettle. After descaling, boil with fresh water several times and discard. Clean any descaler off the kettle - it can damage the parts.
- Some regions of the country have chalky water. This makes boiled water look cloudy and leaves a deposit on the side of the kettle. This is normal but can be removed with regular cleaning.
- Alternatively, to reduce limescale build up, use filtered water to fill your kettle.

after sale service and repair

- When the cord is damaged, for safety reasons, please stop using the product and contact the channel or the distributor where you purchased the product from, or return the faulty product to Kenwood's general agent "Great Jungle Trading Co., Ltd" service centre to be repaired.
- If you have any problem regarding the use of the product or any question about the product, fault or question regarding the warranty, please contact our customer service:
 - Customer Service hotline:
02-2793-3939
 - Customer Service address:
1/F, No. 172, Xíngài Road, Neihu District, Taipei City
 - Customer Service mailbox:
info2009@sgj.com.tw
 - Opening time: 9:00AM ~ 6:00PM



Please properly recycle discarded products.

- Designed and engineered by Kenwood in the UK.

繁體中文

請展開封面插圖

SJM020系列 快煮壺

首先感謝您購買英國 Kenwood 廚房家電商品，為使您操作順暢及安全，我們建議您在使用商品前請仔細閱讀本說明書。請將說明書保存好，使用前請將所有包裝和壺身上的標籤或貼紙都拆卸。

kMix
the art of living®

SUREGRIP™

這是一款極致精美又典雅時尚的快煮壺，呈現出整個廚房的大膽設計。在產品的每一個部位上增加些細膩感及人體工學的貼心設計，是這個系列的特徵。如：SureGrip™人體工學防滑設計，除了讓產品更加有時尚感之外，還可讓使用者握起來更舒適及安全。壺身和底座金屬打造，再加上高級鋼琴烤漆，讓整個產品更有質感。另外，注水口加寬以及彈開式上蓋，可讓使用者更方便加水。

安全事項

- 每次使用時，請確認⑨「壺嘴濾網」已裝上，勿將水加的太滿，避免沸騰時水會從壺嘴溢出。
- 煮沸後的水蒸氣，在您倒水或加水時，會由壺嘴及打開的上蓋散出。請注意，保持適當安全距離，以免燙傷。
- 注意：當快煮壺在加熱時金屬壺身會燙，請勿觸摸以免燙傷。
- 為了避免兒童接觸，切勿將電源線懸掛於桌子或櫃檯邊緣。
- 使用完畢，請務必將電源線拔除。
- 除了濾網之外，請勿將壺身、底座、以及電源線泡進水裡。
- 若機器故障或有瑕疵，請勿繼續使用。並立即將機器送往 Kenwood 總代理「各界貿易有限公司」服務中心進行維修，請看第10頁「售後服務及維修」。
- 注意：請勿在斜角或不平的桌面上使用快煮壺。
- 請務必使用隨商品所附的⑦「電源底座」，勿使用其他非原廠底座。並請將⑦「電源底座」保持乾淨及乾燥。
- 開始加熱前，請確認上蓋已關緊。
- 警告：沸騰時，請勿打開上蓋。
- 打開上蓋時請小心，上蓋殘留的熱水有噴滴出來的可能。
- 在拿起壺身及倒水前，請確認機器是在關機狀態。

- 加水或倒水之前，請務必將快煮壺壺身拿起離開電源底座。
- 使用快煮壺時，請遠離瓦斯爐、烤箱、微波爐、電爐、或其他加熱產品。
- 本商品之設計與使用係僅針對將水加熱之用途。
- 對於兒童及其他無法認知危險或無法即時應變意外之人士，嚴禁使其單獨接近或使用本商品。如要使用宜由已詳閱本說明書並能正確使用之人士從旁進行協助或在場看管下方可使用。
- 請避免兒童接觸並當成玩具。
- 本產品之設計與使用係針對家用環境，勿移做營業用途或其他環境使用。任何因使用者不正確、錯誤或不合理使用所造成之損壞或危險，非為廠商所承諾與保障的安全範圍，廠商亦不負其責。
- 將插頭插進插座之前，請先確認插座的電源規格是否符合本產品的規格，並務必將地線插上。

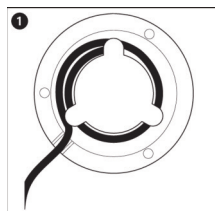
注意事項

- 為了使用者安全，當機器的電源線或插頭有明顯的缺陷或發生任何損壞，請停止使用以避免危險，並立即送回 Kenwood 總代理「各界貿易有限公司」服務中心進行維修。
- 嚴禁自行拆解、維修或更換零件，任何不正確、錯誤或不合理之使用所造成的損壞與危險，非為廠商所承諾與保障的安全範圍，廠商亦不負其責。

操作步驟

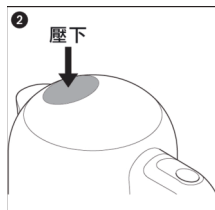
初次使用

- 若電源線太長，可按照圖示❶將電源線收納至底座，留下適合的長度插在插座上。
- 將水加到 MAX 線、按下開關，等待水沸騰後將水倒掉。重複這動作2到3次。



1. 可透過壺嘴或頂部的開口將水倒入。若要將水從頂部的開口倒入，上蓋打開，並且將水倒入到MAX線和MIN線之間。
 - 為了環保因素，僅注入您所需的適當水量。
 - 請每次使用乾淨的水，避免重複煮沸壺裡的水。
 - 使用完畢後，請將壺裡剩下的水倒掉。

2. 請確認上蓋已關緊。若要關緊上蓋，請按照圖示❷從❷「上蓋壓墊」將上蓋壓下。



3. 將插頭插入插座，並將❸「加熱開關」打開。此時❸「加熱開關」上的指示燈會亮起。

4. 此時快煮壺會開始加熱，煮沸後會自動關機(停止加熱)。若要再繼續加熱，請等幾秒鐘後再將開關打開。

- 若出現不正常開關機問題，請檢查內部加熱器是否殘留水垢，請看第9頁「除垢」。
- 快煮壺隨商品有附加一個❹「壺嘴濾網」，是為了過濾雜質或礦質殘留。
- 若壺底發現水滴或微少的水，請勿擔心，那只是凝結物/水蒸氣。
- 防止空燒：若加太少的水，煮水壺會自動關機。空燒(完全無水)，大約14秒會自動關機，再加1/4以上的水，即可再繼續加熱。

注意：此時因水壺內鍋裡很燙，注入水會產生大量的水蒸氣，請與注水開口保持安全距離。

清潔維護

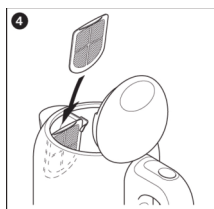
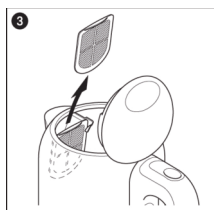
- 清洗前，請先將插頭拔掉，並讓快煮壺冷卻。
- 外表及底座：用微濕的布來擦拭，請勿用粗面的布或刷子來擦拭以免刮傷商品的金屬及塑膠表層。
- 內部：雖然商品裡有濾網，但機器內部和濾網還是要經常清洗。
- 濾網：1. 請打開上蓋。

2. 然後按照圖示③從壺嘴後處將⑨「壺嘴濾網」輕輕的取出。

3. 可將濾網用水沖或用柔刷來擦拭濾網。或當機器除垢時，可將濾網丟進去一起除垢清洗，之後再撈起來清洗。

4. 按照圖示④將⑨「壺嘴濾網」裝回卡榫卡住。

5. 將上蓋關緊。



除垢

- 為了保持快煮壺沸騰的效果，機器內部必須經常清洗及除垢。水垢會導致機器產生以下的問題：

- 開關會異常，導致使用時無法正常開關機或煮沸前就自動關機。
- 加熱時間延長。
- 加熱器受損。

注意：沒有經常進行除垢而導致機器故障，保固將會失效。

- 當內部加熱器已開始累積水垢，請購買除垢劑（註）來清洗內部。除垢後，將水倒掉，再倒入乾淨的水重新加熱，重複此動作直到內部殘留的除垢劑都完全清除。殘留的除垢劑會導致部份零件故障。
- 有些地區的水質不佳，會使加熱後的水，透明度產生霧狀，並有雜質殘留在壺底，這是正常的。
- 若想減少或避免經常除垢，建議使用過濾後的水來煮沸。

註：建議您使用“迪朗奇除垢劑”，詳情請洽代理商客服人員或迪朗奇門市及百貨專櫃。

關於兒童燒燙傷

根據英國燒燙傷協會資料，每年大約有30000名孩童因燒燙傷而住院。有些燒燙傷的傷口對大人而言只是小傷，但對兒童而言卻很嚴重，甚至會有生命危險。為了避免孩童燒燙傷，請遵守以下的預防措施：

- 讓兒童遠離熱飲。
- 在抱孩童時，請勿喝熱飲。或在傳熱飲給其他人，請確保四周都沒有兒童。
- 請確保快煮壺及電源線是在遠離桌子邊緣的安全距離，以免兒童容易碰觸造成危險。
- 避免兒童靠近廚房工作區。
- 要給孩童洗澡前，請先放冷水後再加熱水，混合至適合溫度時先用手肘來測試水溫。
- 教育兒童所有關於「熱」的知識。
- 當遇到燒燙傷，請脫掉身上所有衣著，立即用冷水沖泡，然後立即就醫。

售後服務及維修

- 當電源線損毀，為了安全，請務必停止使用，聯絡您購買的通路或經銷商，或者將故障商品送回 Kenwood 總代理「各界貿易有限公司」服務中心進行維修。
- 如有任何商品上的疑問及故障或保固上的問題，以下是聯絡方式：
 - 客服專線：02-2793-3939
 - 客服地址：台北市內湖區行愛路172號1樓
 - 客服信箱：info2009@sgj.com.tw
 - 營業時間：9:00AM ~ 6:00PM



若要廢棄，請將商品妥善的回收。